

PLAT AND RECORD

PG 4/2 JANESVILLE REC

12/16/75 DAB

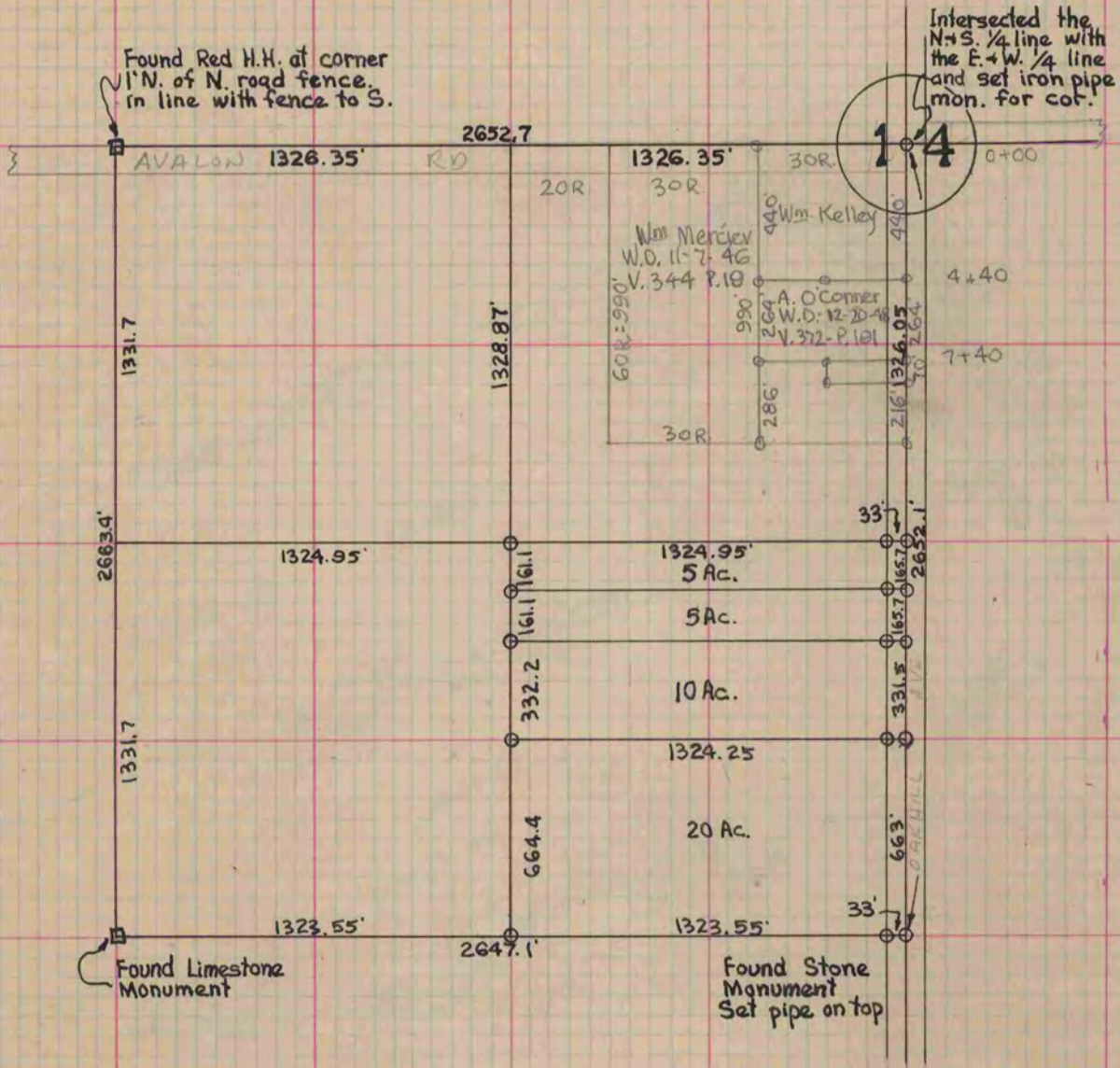
Of a Survey on Section 14 T 2 R 12 E. of the 4 P. M. in Rock Township

Rock County, Wisconsin, made March the 31 1939

I hereby certify that the following is a correct record of said survey as made by me.

COUNTY BUILDING
IN CITY OF БЕЛОIT

(Signed) B. J. Sunny
County Surveyor.



NOTE:
Circles indicate iron pipe monuments set by me.