

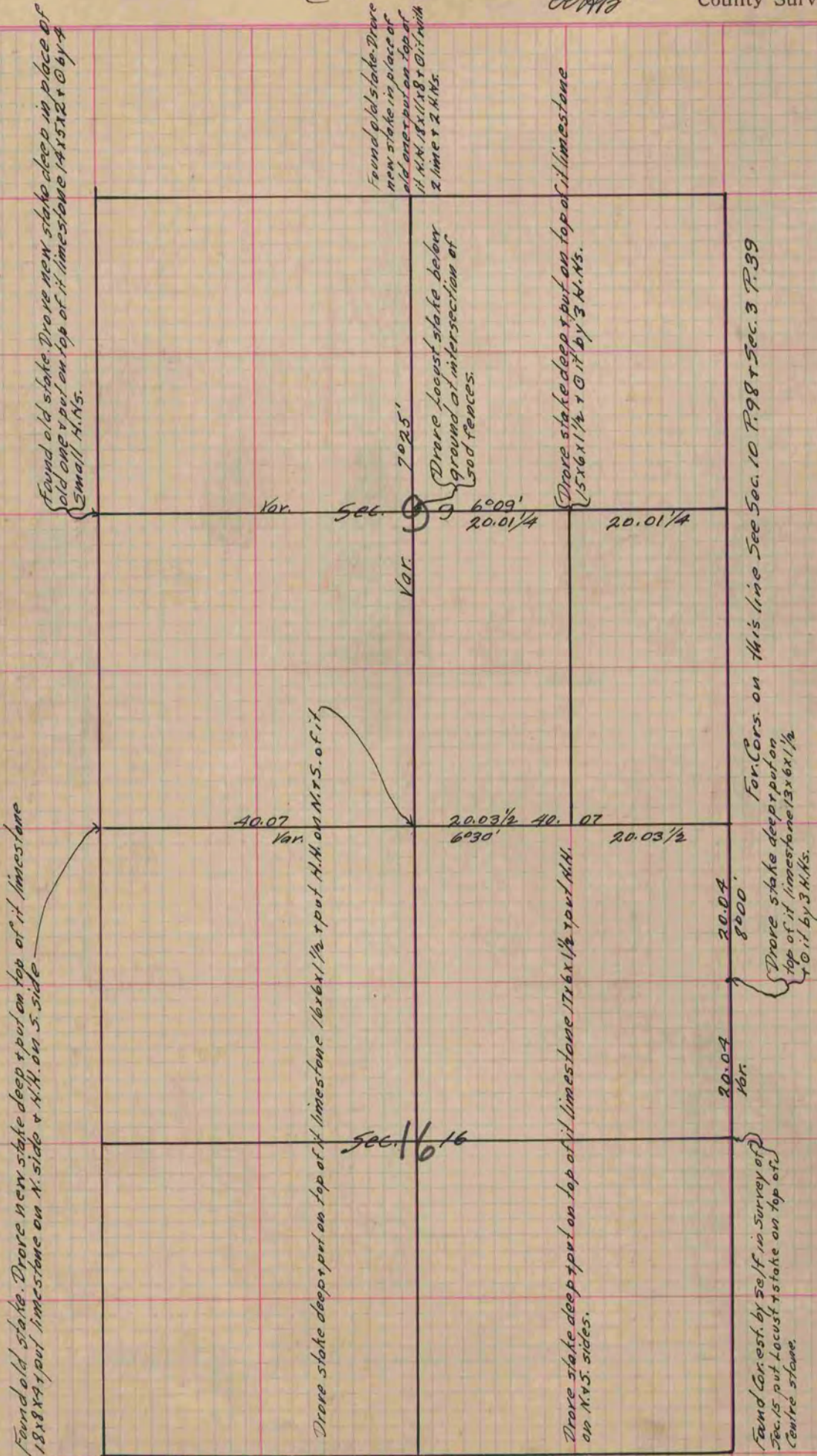
PLAT AND RECORD

Of a Survey on Section 9+16 T 2 R 14 E. of the 4 P. M. in Bradford Township
Rock County, Wisconsin, made June the 2 1874

I hereby certify that the following is a correct record of said survey as made by me.

COUNTY BUILDING
IN CITY OF BELOIT

(Signed) Edward Pyger
County Surveyor.



Copied from P. 99 Vol. 2 Original County Surveyor's Record.