

# PLAT AND RECORD

421

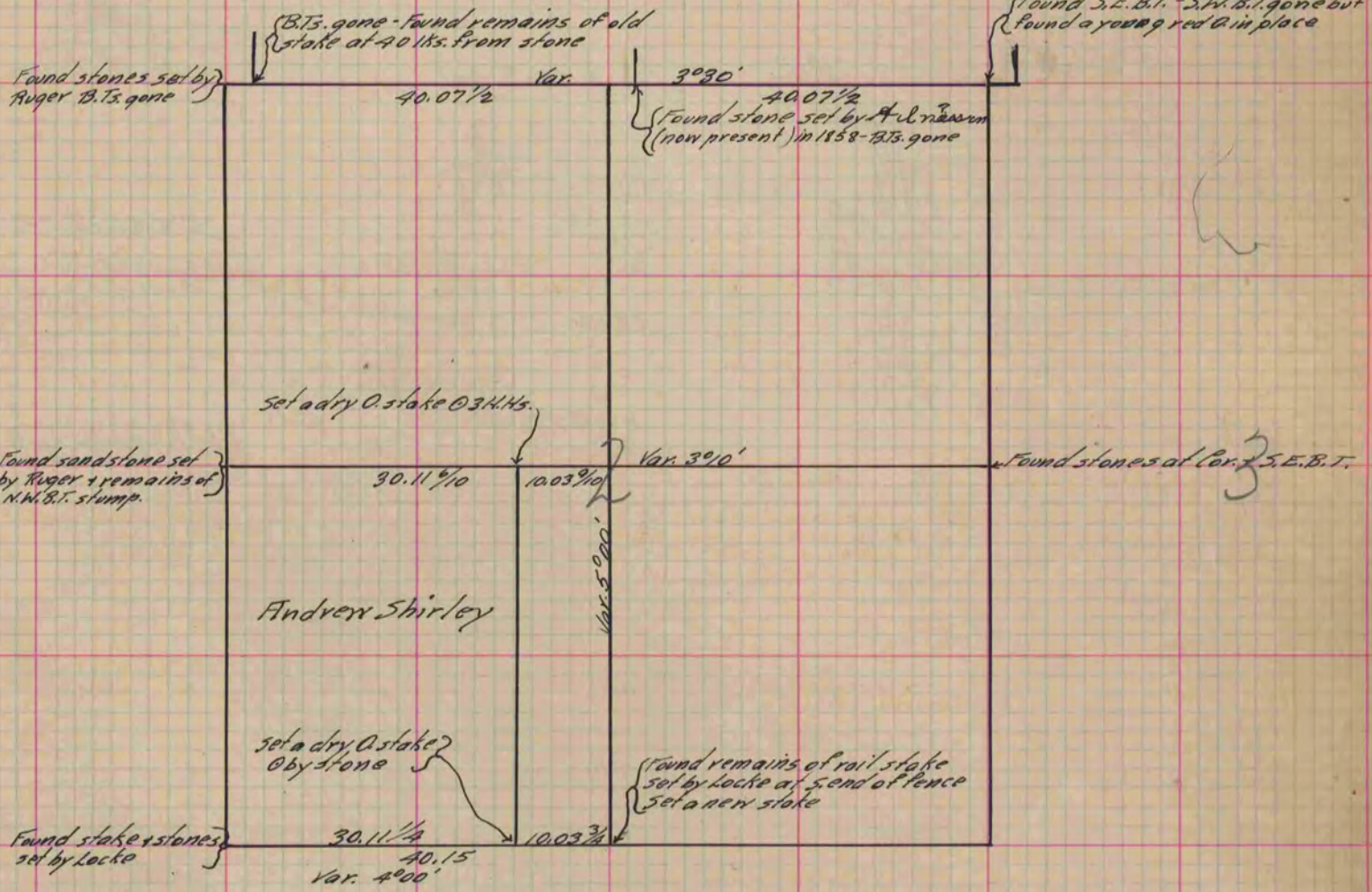
Of a Survey on Section 2 T 1 R 10 E. of the 4 P. M. in Avon Township

Rock County, Wisconsin, made May the 23<sup>rd</sup> + 24<sup>th</sup> 1888

I hereby certify that the following is a correct record of said survey as made by me.

(Signed) R. K. Lee.  
RKL Dep. County Surveyor.

COUNTY BUILDING  
IN CITY OF BELOIT



Copied from P. 340 Vol. 2 County Surveyor's Record.