

PLAT AND RECORD

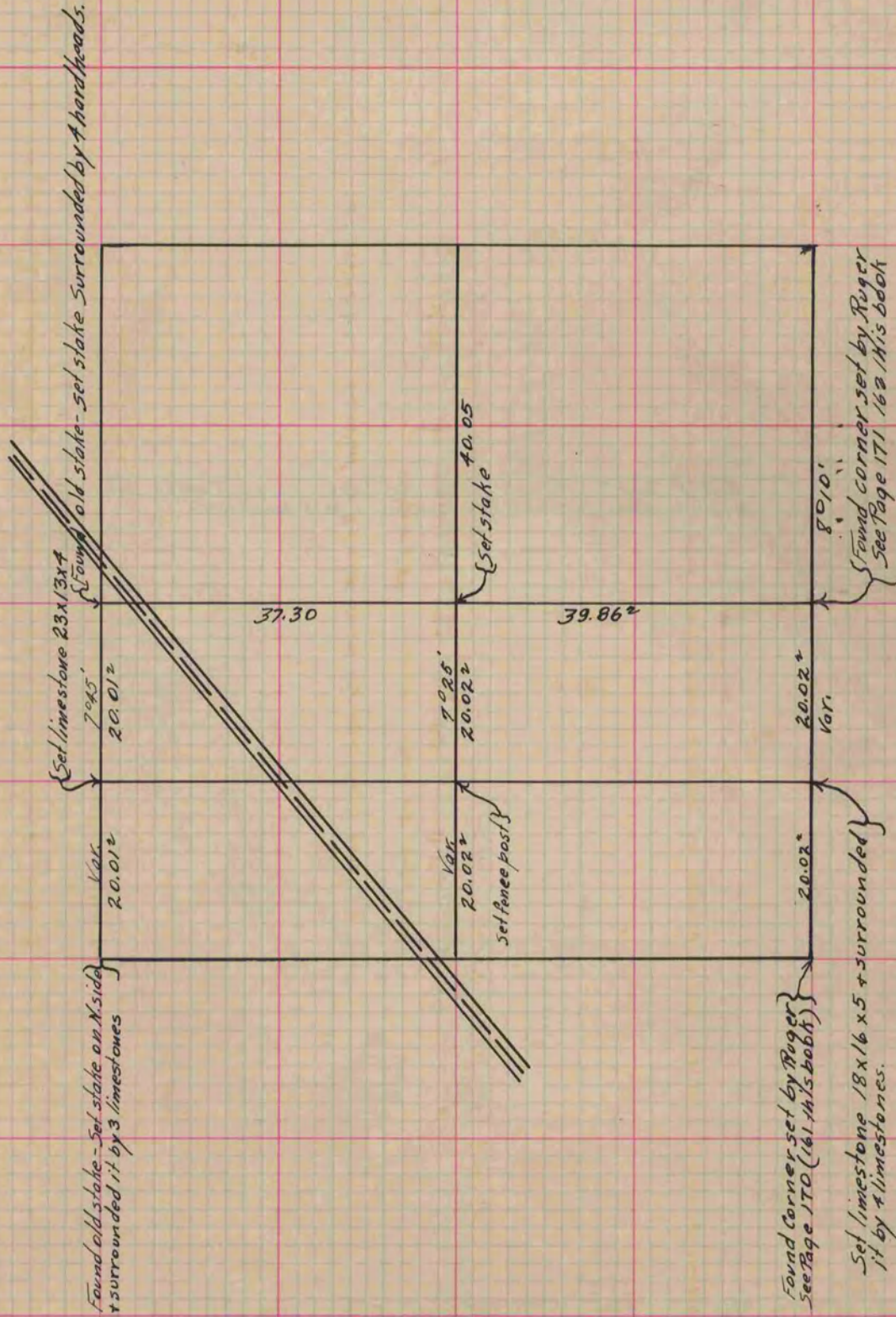
Of a Survey on Section 7 T 2 R 13 E. of the 4 P. M. in LaPrairie Township
Rock County, Wisconsin, made April & September the 1874 1865

I hereby certify that the following is a correct record of said survey as made by me.

COUNTY BUILDING
IN CITY OF BELoit

(Signed) S.D. Locke
S.D. Locke

County Surveyor.



Copied from Page 222 Vol. 1. Original County Surveyor's Record.