

U.S. PUBLIC LAND SURVEY MONUMENT RECORD

For Public Land Survey Corners In: WI ADMINISTRATIVE CODE A-E 7.08 REQUIREMENT

T. 4 N. - R. 13 E. of the 4th P.M.

CORNER CODE INDEX

(PLACE "◆" SYMBOL AT PROPER PLSS CORNER LOCATION)

A	1	2	3	4	5	6	7	8	9	10	11	12	13	14	15	16	17	18	19	20	21	22	23	24	25	A
B																										B
C																										C
D																										D
E																										E
F																										F
G																										G
H																										H
J																										J
K																										K
L																										L
M																										M
N																										N
O																										O
P																										P
Q																										Q
R																										R
S																										S
T																										T
U																										U
V																										V
W																										W
X																										X
Y																										Y
Z																										Z
	1	2	3	4	5	6	7	8	9	10	11	12	13	14	15	16	17	18	19	20	21	22	23	24	25	

MILTON TWP
ROCK COUNTY WI

COORDINATES

(GNSS DERIVED VIA WISCORS)

NORTHING: 315158.84 ELEV: N/A
EASTING: 516581.35

Hor. Datum: WISCRS, ROCK DATUM, (NA2011)

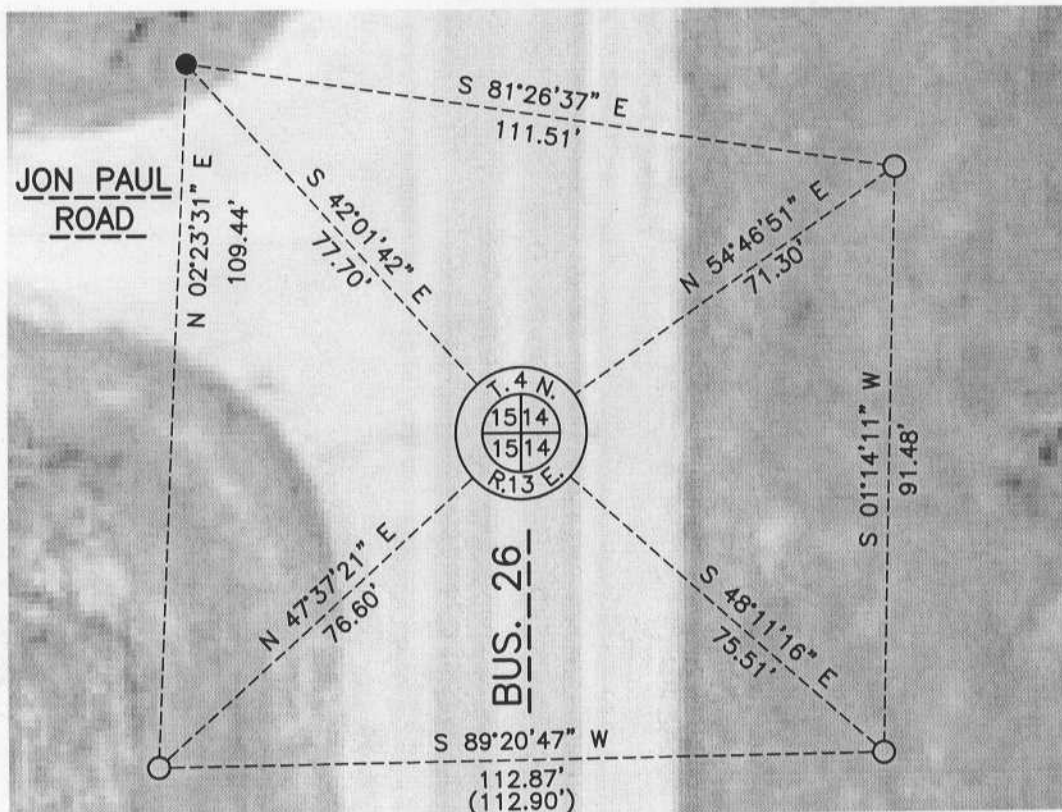
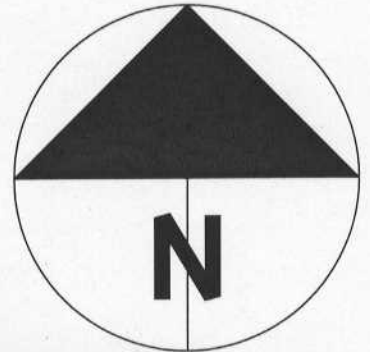
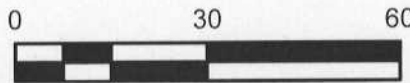
Vertical Datum: NAVD 88, (If applicable)

(a) LEGEND

- - 3/4" x 24" REBAR SET, (RED CAP W/"PLSS WITNESS")
- - ALUMINUM WDOT MONUMENT, IN CONCRETE, FOUND
- (#) - PREVIOUS TIE-SHEET DIMENSION



— COTTON GIN SPINDLE, (CGS), SET
(ALUMINUM MONUMENT OF RECORD FOUND, 2 FT., +/-, SOUTH)
* SEE PAGE 2 *



B) Describe any record evidence, monument evidence, occupational evidence, testimonial evidence or any other material evidence you considered, and whether the monument was found or placed.

I found the aluminum monument and 3 witnesses per the L17(2) Monument record, (Barnes – 1994). The same record indicates the aluminum monument in the roadway is not the PLSS corner location; Barnes never states that he set a monument at what is referred to as the “new position” on the tie-sheet. It appears that Barnes analyzed computations from previous work by Sunny, (1932), Ruger, (1871), and Batterman, (V. 5, Pg. 82), to arrive at the corner location. The Barnes L17(2) also says “monument record L17(1) call bearings and distances to the computed position that Sunny established is in error”. I am unsure what error was discovered however, given the time dedicated to this in 1994, the fact that no surveys of record used the aluminum monument in the roadway and a recent WDOT TPP plat used Rock County coordinates, (new position), I perpetuated the “new position” and set a cotton gin spindle. Witnesses were accepted/set per the map.

C) Was the corner restored through acceptance of (1) an obliterated evidence location, or, (2) a found perpetuated location?

Found perpetuated location.

This location will be capped with bituminous surface in coming weeks.

D) Describe any material discrepancy between the location of the corner as restored or reestablished and the location of that corner as previously restored or reestablished by distance and direction. Show the discrepancy on the plan view drawing under (a), above. Show the distances between the corner as previously restored or reestablished and (1) the corner as restored or reestablished, and (2) to at least 4 of the witness monuments shown on the drawing in (a), above.

I did not find a discrepancy between the corner restored and a previously documented corner location. *Discrepancy* being defined as *disagreeing* with a corner location, *not* as noting dimensional differences between current/former tie sheets due to measuring methods. The current and *most recent* tie-sheet dimensions filed for the corner are noted.

Previous tie-sheets have detailed the history of this corner. FOR REFERENCE ONLY, the coordinates for the aluminum monument found are: N-315157.01, E-516581.09

(E) Was the corner reestablished through lost corner proportionate methods? If so, show the method, including the directions and distances to other public land survey corners used as evidence or used for proportioning the corner location.

N/A

I, Jason R. Houle, hereby certify that the corner location as identified by the corner code index was determined by me under my direction and control and that this U.S. Public Land Survey Monument Record is correct and complete to the best of my knowledge and belief.

**CORNER CODE: L-17
(A.E. 7.08 REQUIREMENT)**

