

Paper weight-110# (minimum)

Black nonfading ink required

U.S. PUBLIC LAND SURVEY MONUMENT RECORD

For Public Land Survey Corners In:

WI ADMINISTRATIVE CODE A-E 7.08 REQUIREMENT

T. 4 N. R. 12 E. 4th P.M.

REV 10/23/2004

USMONREC.DWG

CORNER CODE INDEX

A	1	2	3	4	5	6	7	8	9	10	11	12	13	14	15	16	17	18	19	20	21	22	23	24	25	A
B		6				5				4				3			2			1						B
C																										C
D																										D
E																										E
F																										F
G																										G
H																										H
J																										J
K																										K
L																										L
M																										M
N																										N
O																										O
P																										P
Q																										Q
R																										R
S																										S
T																										T
U																										U
V																										V
W																										W
X																										X
Y																										Y
Z																										Z

FULTON TWP
ROCK COUNTY WI

IF AVAILABLE
ROCK COUNTY COORDINATES PREFERRED

North _____ Elev. _____

East _____

Hor. Datum _____ Vert. Datum _____

LATITUDE _____ ELLIPS. HT. _____

LONGITUDE _____

NAD83(91) _____ NETWORK ADJ. YR _____

GPS (X) _____ TRAVERSE (X) _____

BASED ON THE FOLLOWING CONTROL:

PLACE MONUMENT SYMBOL AT PROPER LOCATION ON ABOVE INDEX

CORNER MONUMENT

WITNESS MONUMENT

BEARINGS ARE BASED ON: (a) _____

OBSERVATION SHEET 2059

FIELD BOOK _____ PAGE # _____

SHEET 1 OF 3

SHOW A PLAN VIEW DRAWING DEPICTING THE CORNER MONUMENT AND SURROUNDING PHYSICAL FEATURES, INCLUDING THE EXCAVATION AREA AND DEPTH.

PLANNING & ZONING COMMITTEE ADOPTED THIS FORM ON 12/2/1982

CORNER CODE R-3(1)

FU582 ^

(B) Describe any record evidence, monument evidence, occupational evidence, testimonial evidence or any other material evidence you considered, and whether the monument was found or placed.

- 1834 (APR 4TH) HARRISON EAST BETWEEN SECS 19 & 30 T4N R12E
4TH M
363 ENTER BOTTOM
396 TRAIL NE
799.92 INT RIGHT BANK OF ROCK RIVER SET MEANDER POST
{BURR O 12 S31W 174.24' BURR O 8 NB7W 172.92'
BURR O 12 BURR O 8} MARKED
LAND ROLLING 2ND RATE TIMBER BURR O
UNDERGROWTH ? & GRASS & WEEDS
- 1836 (AUG 2) BURHAM WEST RANDOM BETW SECS 19 & 30
3597 INT. LEFT BANK ROCK RIVER
4280.1 INT. RIGHT BANK 22.44' SOUTH OF MP FIRST RATE
BUR OAK OPENINGS
EAST CORRECTED BETW. SECS 30 & 19
709.5 SET MP ON LEFT BANK BUR OAK 10 N41E 10.56'
BUR OAK 8 S44 1/2W 25.74'
1640.1 SET 1/4 SEC POST YELLOW OAK 16 NORTH 41W 7.26'
W. OAK 18 S26E 62.7'
4280.1 TO CORNERS
- 1842 STEBBINS JANESVILLE TWP RD RECORDS BK #1 PG 9.
SURVEY OF A ROAD LEADING FROM STONES FERRY ON ROCK
RIVER TO THE EAST LINE OF THE JANESVILLE, MADE JULY 18
& 19, 1842. BEGINNING AT A POINT ON THE EAST BANK OF
ROCK RIVER 379.5' SOUTH OF THE NORTH LINE OF SEC 30,
T4N R12E; THENCE NORTH 83 EAST 5,280'; THENCE NORTH
65 EAST 445.5' TO THE SECTION LINE; THENCE EAST 2706;
THENCE SOUTH 77 EAST 9240' TO A POINT WHICH BEARS
SOUTH FROM A BURR OAK TREE 11.88'; THENCE NORTH 86 1/2
EAST 4818'; THENCE SOUTH 86 EAST 1452'; THENCE NORTH
82 1/2 DEGREES EAST 2640; THENCE NORTH 10 1/2 EAST 660';
THENCE NORTH 33 /12 EAST 594' TO A POINT ON THE NORTH
LINE OF SEC 25, 1141.8' WEST OF THE QUARTER POST;
THENCE EAST 3781.80' TO THE NORTHEAST CORNER OF SEC
25; AND THE WHOLE LENGTH OF THE ROAD IS 31,617.3'.
COURSE GIVEN ACCORDING TO THE TRUE MERIDIAN.
VARIATION OF NEEDLE 7 1/2
- 1937 FEDERAL GOV. AIR PHOTO X1-4 319 FL 7 DATED 7-20-1937.
SHOWS N/S FENCE ON NORTH SIDE OF RD APPROXIMATELY
NEAR THE COR.
- 1951 DEED BK 405 PG 88. COMMENCING AT NE COR SEC 30
SOUTH 206' TO PIPE @ CENTER OF RD; THENCE 88-15W
1252.4 ALONG CENTER OF RD TO IRON STAKE; THENCE N88-
04W 1373.05 TO IRON STAKE AT CENTER OF RD; THENCE S1-
17W 660' TO IRON STAKE; THENCE """""".
- 1980 BARNES R-3 SHOWS ORIGINAL GOV. DISTANCES & CONFLICTS
WHICH CONFLICTS. THERE APPEARS TO BE A VERY LARGE
DISCREPANCY IN THE ORIGINAL GOVERNMENT FIELD WORK
FROM MARCH 31 TO APRIL 4 1834 WHEN LEO HARRISON
SURVEYED THE FRATCTIONAL SECTIONS & THE MEANDER
LINE ALONG THE RIGHT BANK OF ROCK RIVER. THE INTERIOR
SECTIONS & THE LEFT BANK OF ROCK RIVER IN FULTON TWP
WERE SURVEYED BY BURHAM FROM JULY 10 TO AUG 4
1836. BURNAHAM'S SURVEY WAS APPROVED BY THE
SURVEYOR GENERAL IN 1837.
- 1983 BARNES VOL 6 PG 301 SHOWS REG. DISTANCES.

SHEET 1 OF 3

CORNER CODE R-3(1)

Donald Barnes
April 22, 2008

FU582

PLACED 3/4X24 REROD ON TOP OF LARGE ROCK. TOP OF REROD IS ABOUT 12-13" BELOW GRADE. PLACED 2 MAGNETS AT BASE OF REROD & 2 MAGNETS ABOUT MID POINT OF REROD.

C) Was the corner restored through acceptance of (1) an obliterated evidence location, or, (2) a found perpetuated location?

NO

D) Describe any material discrepancy between the location of the corner as restored or reestablished and the location of that corner as previously restored or reestablished by distance and direction. Show the discrepancy on the plan view drawing under (a), above. Show the distances between the corner as previously restored or reestablished and (1) the corner as restored or reestablished, and (2) to at least 4 of the witness monuments shown on the drawing in (a), above.

NONE

(E) Was the corner reestablished through lost corner proportionate methods? If so, show the method, including the directions and distances to other public land survey corners used as evidence or used for proportioning the corner location.

YES. I PRORATED THE DISTANCE FROM THE SE CORNER OF SEC 19 TO THE FD LIMESTONE AT THE MEANDER CORNER ON THE WEST SIDE OF THE RIVER. I USED BURNHAM'S 1836 DISTANCE OF 4280.10 AND MY DISTANCE OF 4325.91. THE 1/4 CORNER IS ON A LINE BETWEEN THESE CORNERS. MY DISTANCE TO THE SE CORNER IS 2668.27 AND THE DISTANCE TO THE MEANDER CORNER IS 2459.78

I, **Donald Barnes**, hereby certify that the corner location as identified by the corner code index was determined by me under my direction and control and that this U.S. Public Land Survey Monument Record is correct and complete to the best of my knowledge and belief.

Seal

Donald Barnes
Emboss

Barnes

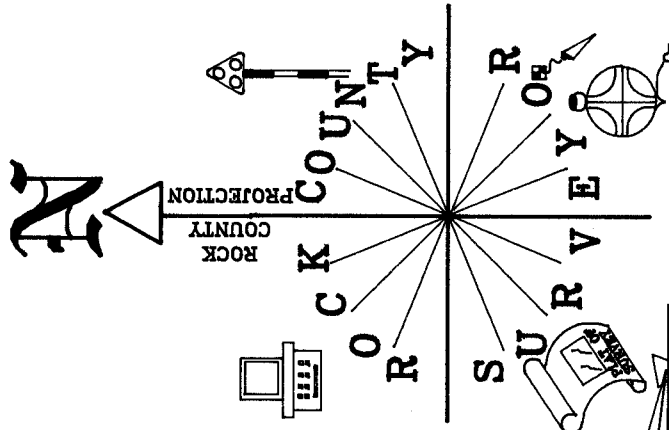
April 23, 2008

SHEET 2 OF 3

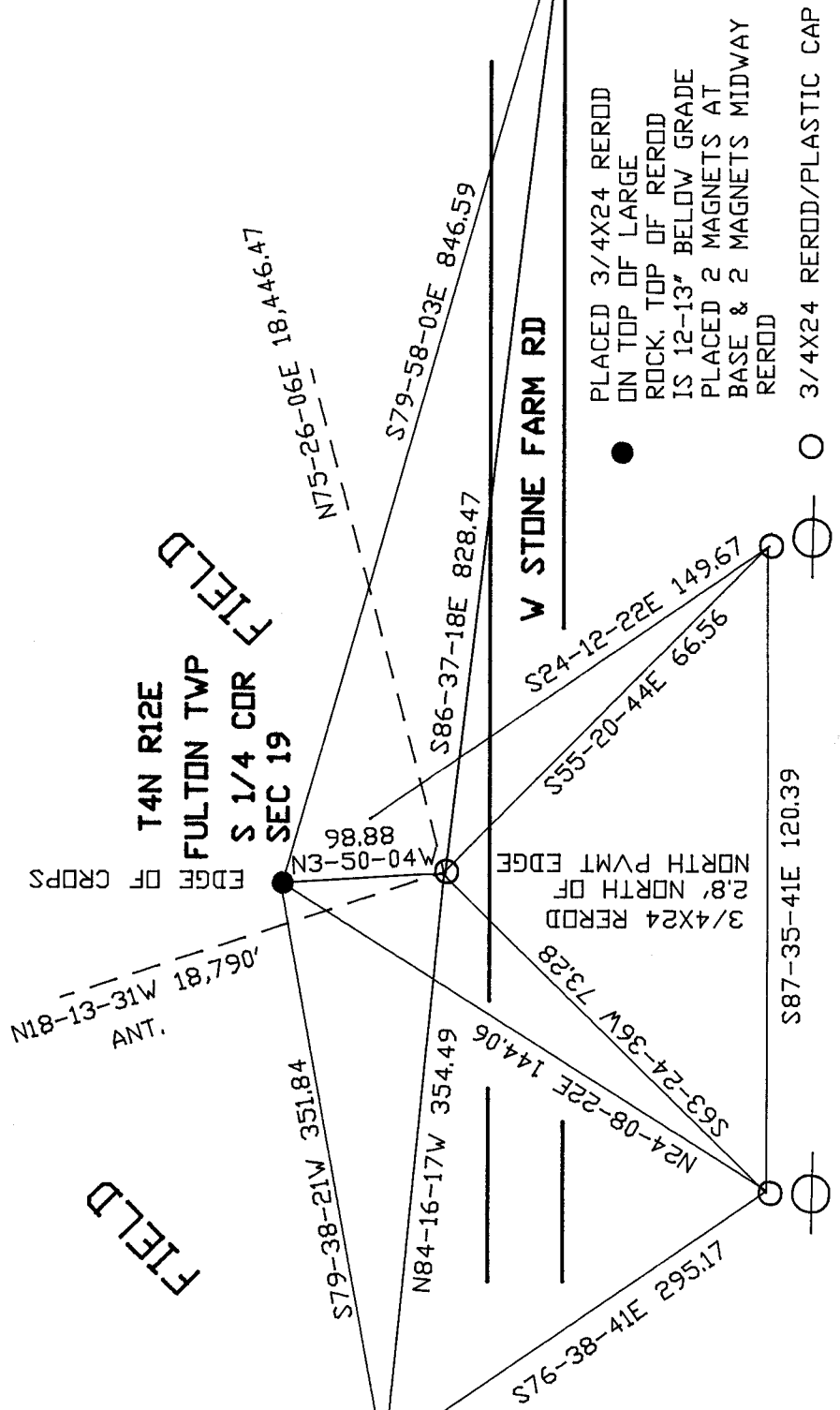
CORNER CODE

R-3(1)

A.E. 7.08 REQUIREMENT



NOT TO SCALE
ZEMISS
PK SOUTH EDGE OF PVMT



EMBOSSED SEAL

Ronald Green

April 22, 2008

3/4X24 REROD
CENTER OF DR
PROJECTED NORTH
29' NORTH OF
NORTH PVMT EDGE

SHEET 3 OF 3

R-3