

Paper weight-110# (minimum)

Black nonfading ink required

U.S. PUBLIC LAND SURVEY MONUMENT RECORD

For Public Land Survey Corners In:

WI ADMINISTRATIVE CODE A-E 7.08 REQUIREMENT

T. 4 N. R. 12 E. 4th P.M.

REV 10/23/2004

USMONREC.DWG

CORNER CODE INDEX

1	2	3	4	5	6	7	8	9	10	11	12	13	14	15	16	17	18	19	20	21	22	23	24	25	
A																									A
B																									B
C	6																								C
D		5																							D
E			4																						E
F				3																					F
G					2																				G
H						1																			H
I																									I
J																									J
K																									K
L																									L
M																									M
N																									N
O																									O
P																									P
Q																									Q
R																									R
S																									S
T																									T
U																									U
V																									V
W																									W
X																									X
Y																									Y
Z																									Z

FULTON TWP
ROCK COUNTY WI

IF AVAILABLE
ROCK COUNTY COORDINATES PREFERRED

North _____ Elev. _____

East _____

Hor. Datum _____ Vert. Datum _____

LATITUDE _____ ELLIPS. HT. _____

LONGITUDE _____

NAD83(91) _____ NETWORK ADJ. YR _____

GPS (X) _____ TRAVERSE (X) _____

BASED ON THE FOLLOWING CONTROL:

PLACE MONUMENT SYMBOL AT PROPER LOCATION ON ABOVE INDEX

CORNER MONUMENT

WITNESS MONUMENT

BEARINGS ARE BASED ON: _____

FIELD BOOK _____ PAGE # _____

SHEET 1 OF 3

SHOW A PLAN VIEW DRAWING DEPICTING THE CORNER MONUMENT AND SURROUNDING PHYSICAL FEATURES, INCLUDING THE EXCAVATION AREA AND DEPTH.

PLANNING & ZONING COMMITTEE ADOPTED THIS FORM ON 12/2/1982

CORNER CODE P-9(1)

FU 576^

(B) Describe any record evidence, monument evidence, occupational evidence, testimonial evidence or any other material evidence you considered, and whether the monument was found or placed.

1834 HARRISON NORTH BETWEEN SECS 20 & 21 PG 20

4884 LEAVE ROCK RIVER & SET MEANDER POST ON RIGHT BANK OF SAME {W OAK 12 N7E 63.36' WHITE OAK 18 N33W 49.5'

5280 SET COR TO SECS 16,17,20,&21 RED OAK 18 S41E 7.92' RED OAK 12 S29W 14.52' WHITE OAK 20 N58W 47.52' WHITE OAK 12 N37E 33' LAND ROLLING 2ND RATE TIMBER MOSTLY WHITE OAK. GRASS & WEEDS.

1836 JULY BURNHAM NORTH BETWEEN SECS 20 & 21

1716 LEFT PRAIRIE

4290 TRAIL CROSS NE & SW

4342.8 TO LEFT BANK R. RIVER

4934.16 INT. RIGHT BK 27.06' EAST OF MP FIRST RATE DRY PRAIRIE AND BUR & W.O. OPENINGS

SOUTH CORRECTED BETW. SEC 20 & 21

600.6 SET MP ON LEFT BANK R. RIVER YELLOW OAK 8 S54 1/2E 9.9' WHITE OAK 16 S19 1/2W 35.64' NO STATIONS

2294.16 SET 1/4 SEC POST W. OAK 24 S57W 30.36 BUR OAK 16 N71E 21.12' BUR OAK 10 IN DIA.

1893 BLEEDORN VOL 2 PG 474 FD STAKE

1976 SCHROEDER CSM VOL 5 PG 188 STATES NOTHING ABOUT MON. 1303.81 WEST OF CONC NAIL IN CENTER OF CTH F, WHICH IS ON THE SEC LINE.

1975 BARNES VOL 5 PG 96 SET W-1-B BERNTSEN 1 1/2' DEEP & REF.SAME. 37' WEST OF N/S FENCE

1976 BARNES VOL 5 PG 97 DIAGRAM OF SEC. 2745.63 TO NW COR SEC 21, 2631.83 TO SW COR SEC 21, 5230.68 TO E 1/4 COR SEC 21.

1976 BARNES VOL 5 PG 98 COR REFERENCED. 29.1' WEST OF N/S FENCE.

2001 MICHAELS P-9 SET 1X24 PIPE 18" DEEP & REFERENCED. SO-07-23W 2631.83 TO ALUM @ SE COR SEC 20, N88-48-11E 1303.81 TO FD 1" IRON PIPE @ N 1/16TH COR OF SW 1/4 SEC 21. 291,488.10N/S; 2,212,171.54 NAD83(91). BASED ON GPS STA 303S & 303A. IRON PIPE SET USING THE DISTANCES FROM THE SE COR OF SEC 29 AND THE N 1/16TH COR OF THE SW 1/4 OF SEC 21 AS SHOWN IN VOL 5 PG 97 OF COUNTY SURVEYOR RECORDS BY DONALD BARNES. I COULD NOT FIND THE MONUMENT SET BY MR. BARNES. I EXCAVATED 1.7' DEEP ABOUT 1.5' IN ALL DIRECTIONS AROUND THIS LOCATION AND STILL HEARD NOTHING WITH THE METAL DETECTOR. THE FARMER WHO OWNS THE LAND TO THE EAST TOLD ME HE THOUGHT THE MONUMENT WAS REMOVED DURING FENCE REMOVAL.

DUG & FD PIPE 18" DEEP. PLACED 2 MAGNETS ON EAST SIDE OF PIPE. FD NE & NW REFERENCE RERODS.

SHEET 1 OF 3

CORNER CODE P-9(1)

Donald Barnes
Oct 16, 2007

FU576

C) Was the corner restored through acceptance of (1) an obliterated evidence location, or, (2) a found perpetuated location?

ACCEPTED FD PIPE.

D) Describe any material discrepancy between the location of the corner as restored or reestablished and the location of that corner as previously restored or reestablished by distance and direction. Show the discrepancy on the plan view drawing under (a), above. Show the distances between the corner as previously restored or reestablished and (1) the corner as restored or reestablished, and (2) to at least 4 of the witness monuments shown on the drawing in (a), above.

NONE

(E) Was the corner reestablished through lost corner proportionate methods? If so, show the method, including the directions and distances to other public land survey corners used as evidence or used for proportioning the corner location.

NO

I, **Donald Barnes**, hereby certify that the corner location as identified by the corner code index was determined by me under my direction and control and that this U.S. Public Land Survey Monument Record is correct and complete to the best of my knowledge and belief.

Seal
Donald

Emboss
Barnes

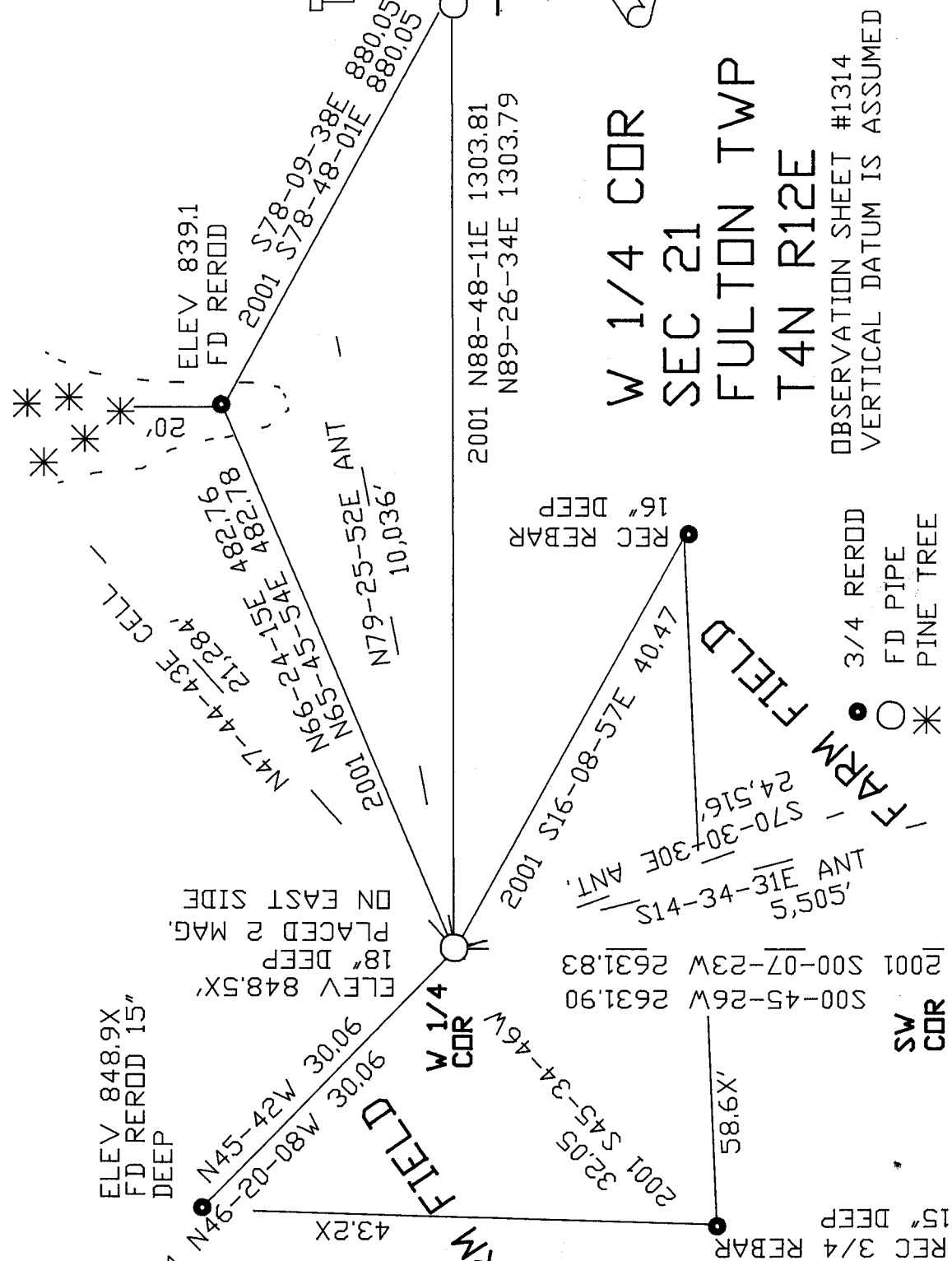
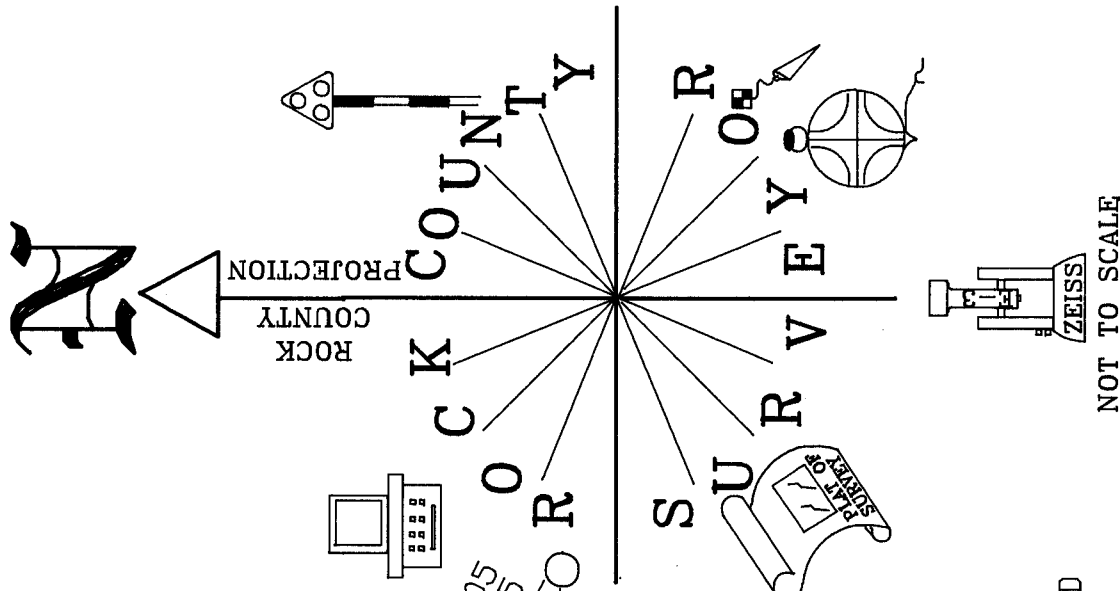
OCT 16, 2007

SHEET 2 OF 3

CORNER CODE

P-9(1)

A.E. 7.08 REQUIREMENT



W 1/4 COR
 SEC 21
 FULTON TWP
 T4N R12E

OBSERVATION SHEET #1314
 VERTICAL DATUM IS ASSUMED

ELEV 848.9X
 FD REROD 15"
 DEEP

N45-42W 30.06
 N46-20-08W 30.06

ELEV 848.5X
 18" DEEP
 PLACED 2 MAG.
 ON EAST SIDE

N47-44-43E 21,284'
 N69-24-15E 482.78
 N65-45-55E 482.78

N79-25-52E ANT 10,036'

2001 N88-48-11E 1303.81
 2001 N89-26-34E 1303.79

2001 S78-09-38E 880.05
 2001 S78-48-01E 880.05

2001 N16-08-57E 40.47

2001 S00-07-23W 2631.83
 2001 S00-45-26W 2631.90

2001 S45-34-46W 32.05
 2001 S16-08-57E 40.47

2001 S70-30-30E ANT 24,516'
 2001 S14-34-41S 5,505'

2001 N46-20-08W 30.06
 2001 N45-42W 30.06

2001 S00-07-23W 2631.83
 2001 S00-45-26W 2631.90

2001 S45-34-46W 32.05
 2001 S16-08-57E 40.47

2001 S70-30-30E ANT 24,516'
 2001 S14-34-41S 5,505'

2001 N46-20-08W 30.06
 2001 N45-42W 30.06

2001 S00-07-23W 2631.83
 2001 S00-45-26W 2631.90

2001 S45-34-46W 32.05
 2001 S16-08-57E 40.47

2001 S70-30-30E ANT 24,516'
 2001 S14-34-41S 5,505'

EMBOSSED SEAL
Donald
Reames
 OCT 16, 2007

P-9(1)
 SHEET 3 OF 3

3/4 REROD
 FD PIPE
 PINE TREE

SW COR