

Paper weight-110# (minimum)

Black nonfading ink required

# U.S. PUBLIC LAND SURVEY MONUMENT RECORD

For Public Land Survey Corners In:

WI ADMINISTRATIVE CODE A-E 7.08 REQUIREMENT

T. 4 N. R. 12 E. 4th P.M.

REV 10/23/2004

USMONREC.DWG

### CORNER CODE INDEX

FULTON TWP  
ROCK COUNTY WI

IF AVAILABLE  
ROCK COUNTY COORDINATES PREFERRED

North \_\_\_\_\_ Elev. \_\_\_\_\_

East \_\_\_\_\_

Hor. Datum \_\_\_\_\_ Vert. Datum \_\_\_\_\_

LATITUDE \_\_\_\_\_ ELLIPS. HT. \_\_\_\_\_

LONGITUDE \_\_\_\_\_

NAD83(91) \_\_\_\_\_ NETWORK ADJ. YR \_\_\_\_\_

GPS (X) \_\_\_\_\_ TRAVERSE (X) \_\_\_\_\_

BASED ON THE FOLLOWING CONTROL:

A	1	2	3	4	5	6	7	8	9	10	11	12	13	14	15	16	17	18	19	20	21	22	23	24	25	A
B		6				5				4					3					2					1	B
C																										C
D																										D
E																										E
F																										F
G																										G
H																										H
J																										J
K																										K
L																										L
M																										M
N																										N
O																										O
P																										P
Q																										Q
R																										R
S																										S
T																										T
U																										U
V																										V
W																										W
X																										X
Y																										Y
Z																										Z

PLACE MONUMENT SYMBOL  AT PROPER LOCATION ON ABOVE INDEX

CORNER MONUMENT

WITNESS MONUMENT

(a)

BEARINGS ARE BASED ON: \_\_\_\_\_

FIELD BOOK \_\_\_\_\_ PAGE # \_\_\_\_\_

SHEET 1 OF 3

SHOW A PLAN VIEW DRAWING DEPICTING THE CORNER MONUMENT AND SURROUNDING PHYSICAL FEATURES, INCLUDING THE EXCAVATION AREA AND DEPTH.

PLANNING & ZONING COMMITTEE ADOPTED THIS FORM ON 12/2/1982

CORNER CODE P-5(1)

FU575 ^

(B) Describe any record evidence, monument evidence, occupational evidence, testimonial evidence or any other material evidence you considered, and whether the monument was found or placed.

- 1834 (MAR/APR) HARRISON NORTH BETWEEN SECS 19 & 20
  - 3410.22 LEAVE ROCK RIVER AND SET M EANDER POST ON RIGHT BANK OF SAME. {WHITE O 20 N73W 145.86' BURR O 20 N4E 92.4'
  - 4950 TRAIL N.E.
  - 5280 SET COR TO SECS 17 18 19 20  
RED O 18 S78W 33' BURR O 8 S30E 36.3' RED O 12 N86E 33' BURR O 10 N14W 44.88' LAND ROLLING 2<sup>ND</sup> RATE TIMBER RED O & BURR O ? GRASS & WEEDS
- 1836 (AUG 2) BURNHAM NORTH BETWEEN SECS 19 & 20
  - 2772 TRAIL @ NE & SW
  - 2838 TO LEFT BANK OF ROCK RIVER
  - 3476.88 INT. RIGHT BANK 213.84'? ?W. OF THE M.P. FIRST RATE W, Y, & BUR OAK OPENINGS  
*SOUTH CORRECTED BETWN SECS 20 & 19*
  - 623.7 SET MP ON LEFT BANK BUR OAK 18 S65W 16.5' W OAK 16 S51E 83.16'
  - 836.88 SET 1/4 SEC POST Y OAK 12 N32 1/2E 16.5' Y OAK 12 S25W 25.08'  
TO CORNERS AUG. 2 1836
- 1983 BARNES P-5 291,380.85N/S; 2,238,525.38E/W. DUG 1X1 HOLE & FD NOTHING. SET POLY MON. & REFERENCED SAME. 213.18 TO MP ON LEFT BANK OF ROCK RIVER. THERE APPEARS TO BE A MAJOR DISCREPANCY WITH THE ORIGINAL GOV. FIELD NOTES. LEO W. HARRISON SURVEYED THE FRACTIONAL TWP FROM MARCH 31 TO APRIL 4 1834. IT WAS ACCEPTED AND APPROVED BY THE SURVEYOR GENERAL ON JULY 21 1835. BURNHAM SURVEYED THE INTERIOR SECTIONS OF FULTON TWP FROM JULY 10 TO AUG 5 1836. IT WAS ACCEPTED AND APPROVED BY THE SURVEYOR GENERAL IN 1837. NOTE: THE SE COR OF SEC 19 & THE E 1/4 COR SEC 30 WERE NOT SET UNTIL AUG 2 1836 BY BURNHAM. HOW HARRISON ARRIVED AT LINE AND DISTANCE OF 3410.22' CAN NOT BE EXPLAINED. BURNHAM'S NOTES INTDICATIONS HE NEVER WENT TO THE NE COR OF SEC 19 OR CLOSED & MEASURED BACK TO THE SE COR OF SEC 19. THE DISTANCE FROM THE SE COR OF SEC 19 TO THE MP ON THE RIGHT BANK IS AS FOLLOWS:
 

HARRISON (1834)	3410.22
BURNHAM (1836)	3476.88
DIFFERENCE	66.66

 SINCE THE E 1/4 COR OF SEC 19 WAS ONLY SET BY BURNHAM, I USED HIS FIELD NOTE DISTANCE FOR PRORATION. THE ORIGINAL PLAT BOOK SHOWS N3-30E 2838' WHEREAS THE FIELD NOTES SHOW 2853.19 FROM THE SE COR TO MP ON THE SOUTH SIDE OF ROCK RIVER.
- 1983 BARNES VOL 6 PG 301 213.19 TO MP ON LEFT BANK OR ROCK RIVER, 2648.04 (GRID) TO SE COR SEC 19. 291,591.98; 2,238,535.37
- 1984 COMBS CSM VOL12 PG 3 ALUM. 2648.18 TO SE COR SEC 19, ANGLE 92-49-30 @ SE COR SEC 19 FROM SOUTH LINE SEC 19 TO E 1/4 COR SEC 19
- 1997 LOGAN CSM VOL 20 PG 75 FD MON BUT STATES NOTHING ABOUT IT. 213.13 SOUTHERLY OF MP, 291,380.85; 2,238,525.38 (FROM COUNTY SURVEYOR'S RECORDS), 2648.31 TO SW COR SEC 20 & 253.05' NORTH OF NORTH R/W LINE OF RIVERS MEET RD.
- 1997 LOGAN "RIVER PINES SUB" BK 32 PG 357 SAME INFORMATION AS IN CSM VOL 20 PG 75

*Donald Barnes*  
11/18/07

FU575

2001 MICHAELS R-5 FD ALUM. MON S2-50-29W 2648.25 TO FD  
BROKEN POLY AT SW COR SEC 20. ANGLE 85-47-57 @ SW COR  
SEC 20 FROM W 1/4 COR SEC 20 TO S 1/4 COR SEC 20 BASED  
ON GPS STA 303S & GPS AZ. MK 303A.

2001 NOTBOHM #9916 & 9917 "HICKORY RIVER VIEW" SUB ALUM.  
MON.

FD POLY MON & REFERENCE MONUMENTS.

C) Was the corner restored through acceptance of (1) an obliterated evidence location, or, (2) a found perpetuated location?

ACCEPTED FD POLY. MON. PLACED CARSONITE POST NEXT TO MON.

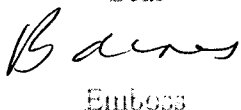
D) Describe any material discrepancy between the location of the corner as restored or reestablished and the location of that corner as previously restored or reestablished by distance and direction. Show the discrepancy on the plan view drawing under (a), above. Show the distances between the corner as previously restored or reestablished and (1) the corner as restored or reestablished, and (2) to at least 4 of the witness monuments shown on the drawing in (a), above.

IN 1836 BURNHAM SET THE 1/4 COR BUT ONLY RAN FROM THE SW TO THE MP ON THE RIGHT BANK OF ROCK RIVER. HE SET THE COR AT 2640 FROM THE SW COR OF SEC 20 WITHOUT CONSIDERATION OF THE DISTANCE TO THE NW COR OF SEC 20. IN 1834 HARRISON SUPPOSEDLY MEASURED FROM THE SW COR OF SEC 20 TO THE NW COR OF SEC 20. THIS IS NOT POSSIBLE SINCE THE SW COR WAS NOT ESTABLISHED UNTIL 1836, BY BURNHAM.

(E) Was the corner reestablished through lost corner proportionate methods? If so, show the method, including the directions and distances to other public land survey corners used as evidence or used for proportioning the corner location.

I, **Donald Barnes**, hereby certify that the corner location as identified by the corner code index was determined by me under my direction and control and that this U.S. Public Land Survey Monument Record is correct and complete to the best of my knowledge and belief.

  
Seal

  
Emboss

11/18/07

SHEET 2 OF 3

CORNER CODE

**P-5(1)**

A.E. 7.08 REQUIREMENT

STA #328 IS 8.0'  
SE OF NE TOWER  
LEG  
3/4 CAPPED REROD  
ELEV 838.4

FD WPL T-BAR;  
REC ELEV 839.12

REC ELEV 827.10  
WPL T BAR;  
MIDDLE OF WEST SIDE  
HIGH VOLTAGE TRANS.  
TOWER

S10-14-03E 271.74

M.P.  
FD CONC. MON  
CARSONITE POST  
ELEV 782

ROCK RIVER

M.P.  
FD CAPPED  
IRON PIPE

S10-33-14E 189.45  
3/8X28" BOLT

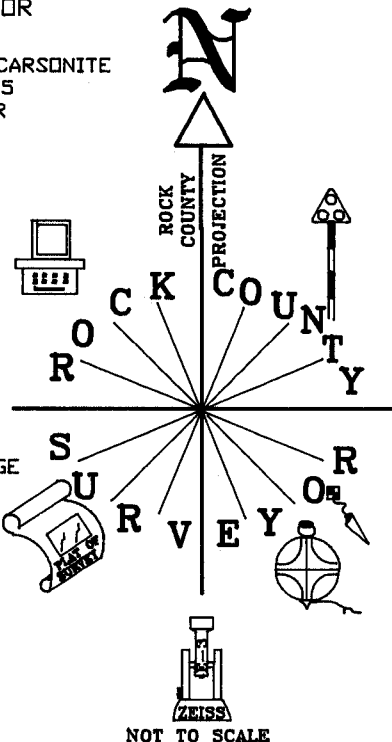
OBSERVATION SHEET #258 & 212  
ELEV BASED ON REC  
WPL CONTROL T BARS

W 1/4 COR  
SEC 20

PK 0.7' NORTH  
OF SOUTH EDGE OF  
PVMT  
ELEV 800.0

W 1/4 COR  
SEC 20  
FD POLY/CARSONITE  
ELEV 793.5  
W 1/4 COR  
SEC 20

SEC 19



FULTON TWP  
T4N R12E

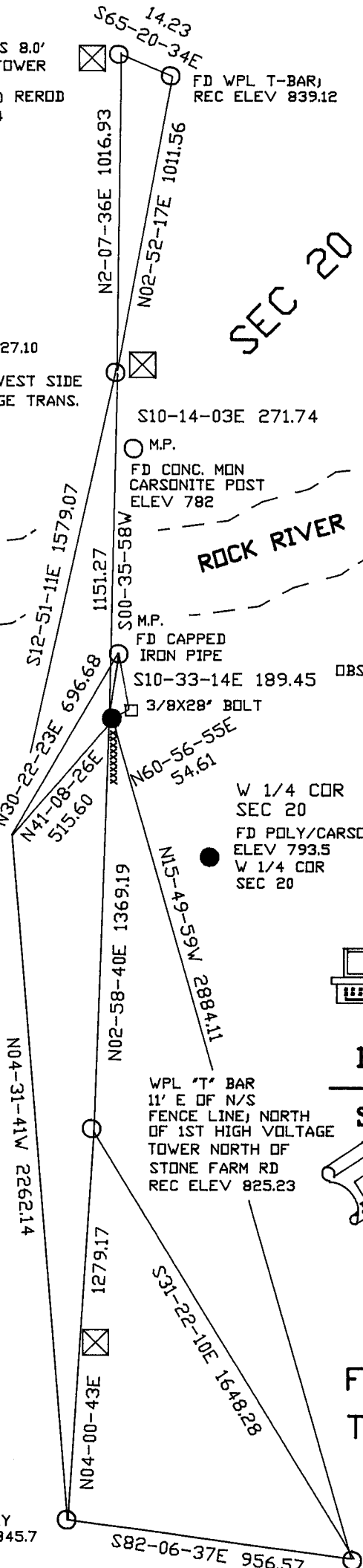
FD WPL 'T' BAR  
4.9' NORTH OF NORTH  
PVMT EDGE; NORTHERLY  
31' OF UP 4-12-29 9/49  
REC ELEV 816.70

SHEET 3 OF 3

P-5(1)

FD POLY  
ELEV 845.7  
SW COR  
SEC 20

STONE FARM RD



*11/18/07*  
*Barney*  
*David*  
ENGINEER  
S.E.M.