

# U.S. PUBLIC LAND SURVEY MONUMENT RECORD

For Public Land Survey Corners In:  
T. 4N. R. 12E. 4th P.M.  
CORNER CODE INDEX

WI ADMINISTRATIVE CODE A-E 7.08 REQUIREMENT  
REV 10/23/2004 USMONREC.DWG

FULTON TWP

ROCK COUNTY WI

IF AVAILABLE  
ROCK COUNTY COORDINATES PREFERRED

1	2	3	4	5	6	7	8	9	10	11	12	13	14	15	16	17	18	19	20	21	22	23	24	25	
A																									A
B	6					5					4					3					2			1	B
C																									C
D																									D
E																									E
F																									F
G	7					8					9					10					11			12	G
H																									H
J																									J
K																									K
L	18					17					16					15					14			13	L
M																									M
N																									N
O																									O
P	19					20					21					22					23			24	P
Q																									Q
R																									R
S																									S
T	30					29					28					27					26			25	T
U																									U
V																									V
W																									W
X	31					32					33					34					35			36	X
Y																									Y
Z																									Z

PLACE MONUMENT SYMBOL  AT PROPER LOCATION ON ABOVE INDEX

North \_\_\_\_\_ Elev. \_\_\_\_\_

East \_\_\_\_\_

Hor. Datum \_\_\_\_\_ Vert. Datum \_\_\_\_\_

LATITUDE \_\_\_\_\_ ELLIPS. HT. \_\_\_\_\_

LONGITUDE \_\_\_\_\_

NAD83(91) \_\_\_\_\_ NETWORK ADJ. YR \_\_\_\_\_

GPS (X) \_\_\_\_\_ TRAVERSE (X) \_\_\_\_\_

BASED ON THE FOLLOWING CONTROL:

CORNER MONUMENT

WITNESS MONUMENT

BEARINGS ARE BASED ON: \_\_\_\_\_

FIELD BOOK \_\_\_\_\_ PAGE # \_\_\_\_\_

SHEET 1 OF 3

SHOW A PLAN VIEW DRAWING DEPICTING THE CORNER MONUMENT AND SURROUNDING PHYSICAL FEATURES, INCLUDING THE EXCAVATION AREA AND DEPTH.

PLANNING & ZONING COMMITTEE ADOPTED THIS FORM ON 12/2/1982

CORNER CODE G-9(1)

FU536^

(B) Describe any record evidence, monument evidence, occupational evidence, testimonial evidence or any other material evidence you considered, and whether the monument was found or placed.

1834 HARRISON ORIG GOV. SURVEYOR

NORTH BETWEEN SECS 8 & 9

- 792 ROAD EAST & ENTER MARSH
- 1848 LEFT MARSH
- 2640 QUARTER SEC COR. WHITE OAK 20 N59W 42 & WHITE OAK 12 S83E 151
- 5280 COR TO SECS 4,5,8,9 WHITE OAK 14 S76E 286, RED OAK 8 N36E 210, BURR OAK 20 N38W 118, & WHITE OAK 24 S53W 153.
- 1871 RUGER VOL 2 PG 57 & 1079 FD OLD STAKE AT COR ALSO FD STUMP OF NW BEARING TREE. SET HARDHEAD STONE 16X9X7 SURROUNDED IT WITH 4 HH VAR 8-12 2644.12
- 1872 LEE VOL 2 PG 89 FD COR SET BY RUGER VAR 8 2688.18 TO CEN SEC 9 & 5352.6 TO E 1/4 COR SEC 9
- 1882 HOLMES VOL 2 PG 351 & 1077 SKETCH WITH  
H I D

-----  
 2697.42                      2641.06  
 EAST & WEST 1/4 LINE SEC 8

AT D. FD STONES & STUMP AS DESCRIBED ON PAGE 36. RUN LINE ON A VAR 7-15 PASSING 2 FT NORTH OF I AND AT H 4.29' NORTH OF STONE AT THE NORTH SIDE OF FENCE POST. THE POINT H BEING NOT REGARDED AS SATISFACTORY, FURTHER INVESTIGATION WAS DEFERRED, BUT SHOWS THE MONUMENTS VERY NEARLY IN A DIRECT LINE JUNE 22

- 1871 RUGER VOL 5 PG 431 RUGER'S FIELD BOOK R-K PG 144 FD D STAKE & STUMP OF NW BT SET HH 16X9X7 SURROUNDED BY 4 HH. WO 20 N59W 27.72' WO 12 S83E 99.66'
- 1899 BROWN VOL 2 PG 507 & #1080 FD STONE 2656.5 TO NE COR SEC 8
- 1964 ELY #1072 ROCK PILE. ONE LARGE ROCK 4 SMALL ROCKS AT COMPASS POINTS. 2653.0X TO SE COR SEC 8, 2644.12 TO IRON STAKE DRIVEN AT CEN SEC 8, & ANGLE 90-34 @ E 1/4 COR SEC 8 FROM SE COR SEC 8 TO CEN SEC 8
- 1964 ELY #1073 IRON STAKE DRIVEN, 2675.4X TO NE COR SEC 8 & 2644.12 TO IRON STAKE DRIVEN AT CEN SEC 8
- 1976 BARNES VOL 5 PG 227 FD HH 7X9X16 SURROUNDED BY 4 HH. @ INT. OF E/W FENCE & N/S FENCE TO SOUTH. REF. SAME. 865 +/- EAST OF ANOTHER N/S FENCE
- 1978 SANDSNES #1104, 1084, 1105 EDGERTON AIR PHOTO GROUND CONTROL
- 1978 SANDSNES VOL 5 PG 447 NAD27 302,189.27; 2,243,691.22
- 1980 COMBS CSM VOL 9 PG 330 STONE. ANGLE 89-52-30 @ CENTER SEC 8 FROM E 1/4 COR SEC 8 TO S 1/4 COR SEC 8.
- 1983 BARNES VOL 6 PG 303 302,189.27; 2,243,691.22 N2-00-22W 2652.71 TO NE COR SEC 8, S1-45-07E 2652.63 TO SE COR SEC 8, S88-46-59W 2647.46 TO CEN SEC 8, & 5347.65 TO W 1/4 COR SEC 8
- 1985 COMBS #13237 FD CUT STONE ANGLE 89-23-15 @ @ NW COR SEC 9 FROM N 1/4 COR 9 TO W 1/4 COR SEC 9
- 2004 COMBS BK32-645 "WINDFIELD FIRST ADD" FD SPIKE NAIL 2654.53 TO NW COR SEC 9. NORTH 1327.52 TO FD 3/4 REBAR.
- 2004 COMBS BK32-679 "WINDFIELD SECOND ADD." FD SPIKE NAIL. 2654.52 TO R/R SPIKE @ NW COR SEC 9

SHEET 1 OF 3  
 CORNER CODE G-59(1)

*Donald Barnes*  
 June 13, 2006

FU536

I FOUND THE STONE OF RECORD LAYING ON TOP OF THE GROUND & TWO 3/4X24" REROD AS SHOWN IN THE DIAGRAM. I REMOVED THE RERODS AND PLACED AN ORANGE POLY MON. AT THE RECORD TIE DISTANCES.

C) Was the corner restored through acceptance of (1) an obliterated evidence location, or, (2) a found perpetuated location?

ACCEPTED PERPETUATED LOCATION

D) Describe any material discrepancy between the location of the corner as restored or reestablished and the location of that corner as previously restored or reestablished by distance and direction. Show the discrepancy on the plan view drawing under (a), above. Show the distances between the corner as previously restored or reestablished and (1) the corner as restored or reestablished, and (2) to at least 4 of the witness monuments shown on the drawing in (a), above.

I FOUND THE TWO RERODS AS SHOWN IN THE DIAGRAM. I WAS UNABLE TO FIND A RECORD OF WHO PLACED THE RERODS.

(E) Was the corner reestablished through lost corner proportionate methods? If so, show the method, including the directions and distances to other public land survey corners used as evidence or used for proportioning the corner location.

I, **Donald Barnes**, hereby certify that the corner location as identified by the corner code index was determined by me under my direction and control and that this U.S. Public Land Survey Monument Record is correct and complete to the best of my knowledge and belief.

Seal

SHEET 2 OF 3

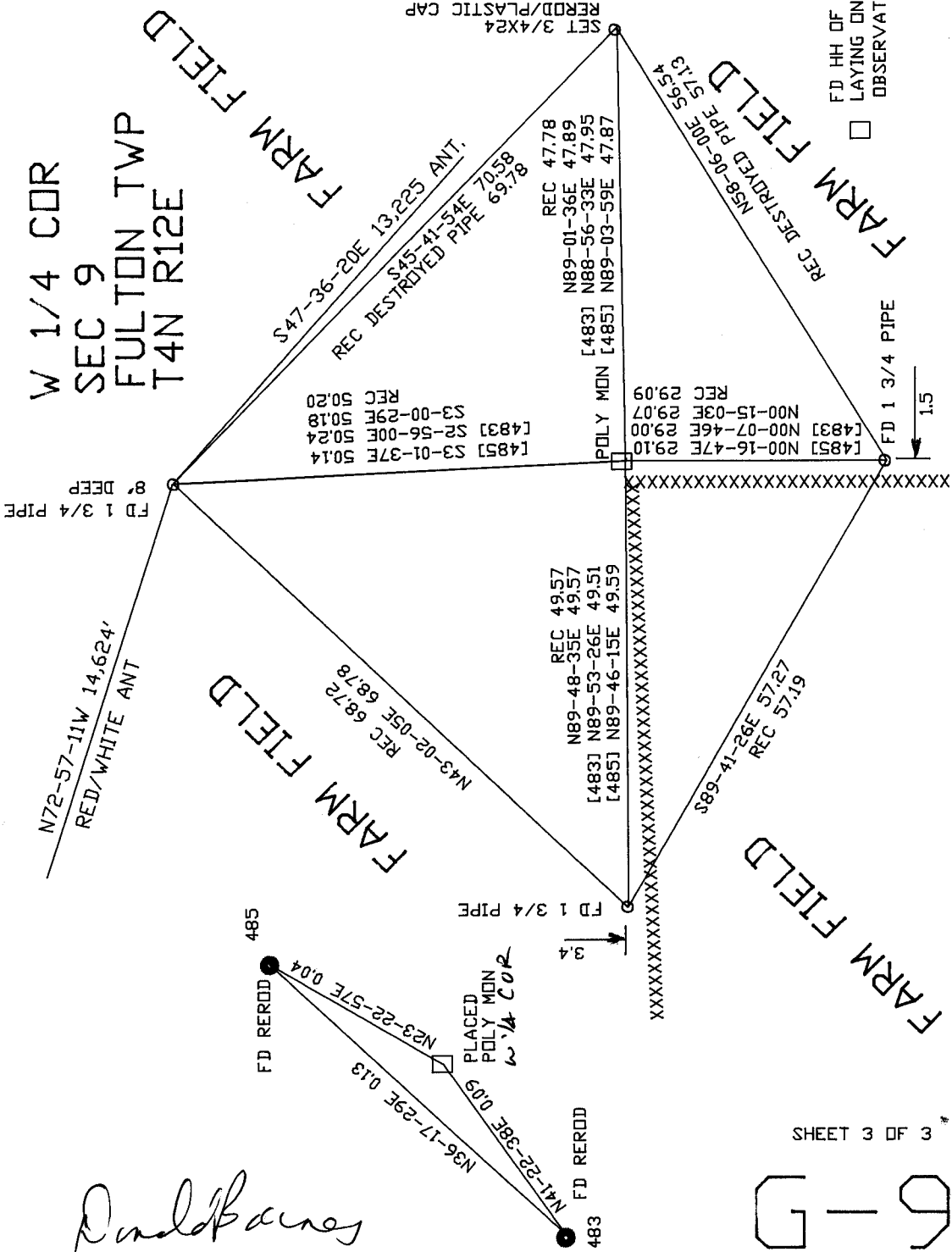
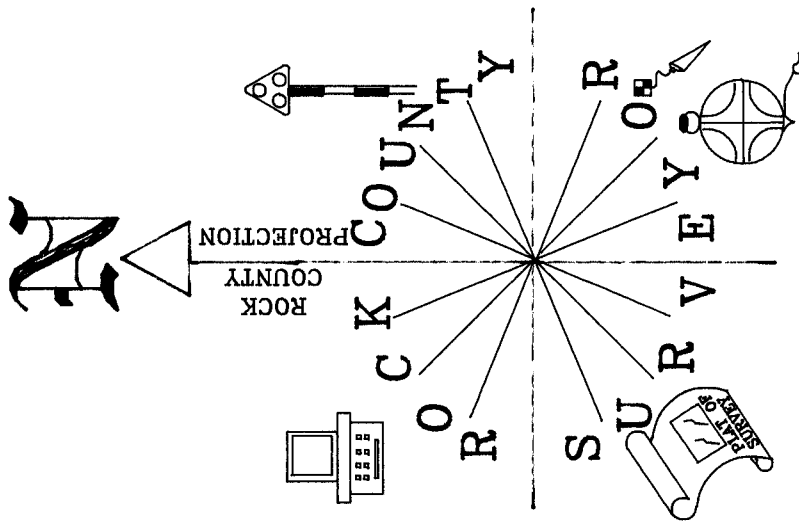
Emboss

*Donald Barnes*  
June 13, 2006

CORNER CODE

**G-9(1)**

A.E. 7.08 REQUIREMENT



*Daniel Barnes*  
 EMBOSSED SEAL

June 13, 2006

G-9(1)

FD HH OF RECORD  
 LAYING ON TOP OF GROUND  
 OBSERVATION SHEET #497

NOT TO SCALE  
 OBSERVATION SHEET #497