

U.S. PUBLIC LAND SURVEY MONUMENT RECORD

For Public Land Survey Corners In:

WI ADMINISTRATIVE CODE A-E 7.08 REQUIREMENT

T. 4 N. R. 12 E. 4th P.M.

REV 10/23/2004

USMONREC.DWG

CORNER CODE INDEX

FULTON

TWP

ROCK COUNTY WI

IF AVAILABLE

ROCK COUNTY COORDINATES PREFERRED

North _____ Elev. _____

East _____

Hor. Datum _____ Vert. Datum _____

LATITUDE _____ ELLIPS. HT. _____

LONGITUDE _____

NAD83(91) _____ NETWORK ADJ. YR _____

GPS (X) _____ TRAVERSE (X) _____

BASED ON THE FOLLOWING CONTROL:

A	1	2	3	4	5	6	7	8	9	10	11	12	13	14	15	16	17	18	19	20	21	22	23	24	25	A	
B		6					5							4				3								2	B
C																											C
D																											D
E																											E
F																											F
G																											G
H																											H
J																											J
K																											K
L																											L
M																											M
N																											N
O																											O
P																											P
Q																											Q
R																											R
S																											S
T																											T
U																											U
V																											V
W																											W
X																											X
Y																											Y
Z																											Z

PLACE MONUMENT SYMBOL AT PROPER LOCATION ON ABOVE INDEX

CORNER MONUMENT

WITNESS MONUMENT

BEARINGS ARE BASED ON: -----

FIELD BOOK _____ PAGE # _____

SHEET 1 OF 4

SHOW A PLAN VIEW DRAWING DEPICTING THE CORNER MONUMENT AND SURROUNDING PHYSICAL FEATURES, INCLUDING THE EXCAVATION AREA AND DEPTH.

PLANNING & ZONING COMMITTEE ADOPTED THIS FORM ON 12/2/1982

CORNER CODE N3 (1)

FU562

(B) Describe any record evidence, monument evidence, occupational evidence, testimonial evidence or any other material evidence you considered, and whether the monument was found or placed.

- 1834 (APR) HARRISON WEST ON RANDOM BET 18 & 19
1773.42 ROAD N.E.
2467.08 TRAIL N
2640 TEMPY 1/4 SEC COR & ENTER BOTTOM OF CREEK
3729 INT. LEFT BANK OF CATFISH CREEK SET GUIDE P
3861 LEAVE SAME SET GUIDE P & LEAVE BOTTOM
4712.4 TRAIL N.E.
5295.84 INT. WEST BDY 11.88' N OF P
LAND & SAME AS BEFORE
COR EAST BET 18 & 19
1419 SET MEAN POST RIGHT BANK OF CATFISH {BURR O
12 S44W 143.88' RED O 8 N20W 126.72'
1551 LEAVE SAME SET MEAND P. ON LEFT BANK {BURR O
18 S45E 143.88'
2655.84 QUARTER SEC. CORNER {BUR O 8 N9E 66' BURR O
12 S72E 126.72'
5295.84 INT. SEC COR.
1875 RUGER VOL 2 PG 200 FD STUMP OF SE BT & WHERE STUMP OF
NE BT HAD BEEN DUG UP. DID NOT EST. COR 2691.48 TO NW
COR SEC 19
1880 LEE VOL 2 PG 315 COR LOST BE GONE DID NOT EST. IT.
1960 BATTERMAN #1293 FD STAKE. SET CONC. MON. 2638.60 TO
NE COR SEC 19
1960 BATTERMAN VOL 4 PG 13 FD PIECE OF WOOD STAKE. RESET
WITH CONCRETE MON. 2638.6X TO SE COR SEC 18
1961 ELY #1297 & 1307 R/R SPIKE
1966 BATTERMAN VOL 4 PG 293 FD CONCRETE MON. SEE VOL 4 PG
13. 2638.6X TO SE COR SEC 18
1968 LEE #1281 FD CONC. MON. 2666.86 TO SW COR SEC 18
1968 LEE #M14337 & M14336 "VILLAGE OF
FULTON" CONSIDERED OBLITERATED & WAS REST BY
PROPORTION MEASUREMENT OF OCCUPATION OF LINES IN
THE NW 1/4 OF SEC 18 & BY TESTIMONY THAT THE WEST LINE
OF SECTION 19 PASSED THROUGH THE KITCHEN OF A HOUSE
800' SOUTH OF SAID CORNER. NB9-09-06E 2666.86 TO FD
CONC. MON @ S 1/4 COR SEC 18 & N00-55-40W 2656.77 TO FD
24X12X4 POINTED HH @ W 1/4 COR SEC 18.
1970 BATTERMAN VOL 4 PG 467 CALLS FOR CONC. MON. 1319.30
TO S 1/16TH COR OF SEC 1/4 OF SEC 18
1971 SCHROEDER #1294 & 1294 CALLS FOR COR. BUT STATES
NOTHING ABOUT IT.
1973 LEE #1286 FD CONC. MON. 2660.40 TO GEN SEC 18,
5315.94 TO N 1/4 COR SEC 18, 2665.36 TO SW COR SEC 18
1978 BARNES #1275 SHOWS RECORD DISTANCES.
1992 BARNES N-3 LAND OWNER SAID THAT HE FD THE MON.
LEANING & STRAIGHTENED SAME. FD CONC. MON & PLACED
CARSONITE POST ON EAST SIDE. & REF SAME. SOUTH OF RD.
1992 BARNES N-1 2666.75 TO SW COR SEC 18 & ANGLE 90-04-17
@ SW COR SEC 18 FROM W 1/4 COR TO S 1/4 COR SEC 18

FD CONCRETE MONUMENT & CARSONITE POST. MONUMENT WAS
LEANING. IT APPEARS THAT BECAUSE OF THE WET SOIL THE
MONUMENT WILL CONTINUE TO BE MOVED BY FROST ACTION.
CHECKED ORIGINAL FIELD NOTES (FULTON DAM BK PG 10) AND
DETERMINED MANY OF THE DISTANCES AND BEARINGS ON N-3 WERE
IN ERROR DUE TO ONE BLUNDER OF AN OBSERVATION.

Donald Barnes
12-16-05

SHEET 1 OF 3
CORNER CODE N-3(1)

FU562

C) Was the corner restored through acceptance of (1) an obliterated evidence location, or, (2) a found perpetuated location?

ACCEPTED POSITION OF ORIGINAL LOCATION OF CONCRETE
MONUMENT AS PURPORTED BY FIELD NOTES (FULTON DAM BK PG
10)

D) Describe any material discrepancy between the location of the corner as restored or reestablished and the location of that corner as previously restored or reestablished by distance and direction. Show the discrepancy on the plan view drawing under (a), above. Show the distances between the corner as previously restored or reestablished and (1) the corner as restored or reestablished, and (2) to at least 4 of the witness monuments shown on the drawing in (a), above.

NONE

(E) Was the corner reestablished through lost corner proportionate methods? If so, show the method, including the directions and distances to other public land survey corners used as evidence or used for proportioning the corner location.

NONE

I, **Donald Barnes**, hereby certify that the corner location as identified by the corner code index was determined by me under my direction and control and that this U.S. Public Land Survey Monument Record is correct and complete to the best of my knowledge and belief.

^{Seal}
Donald Barnes

SHEET 2 OF 3

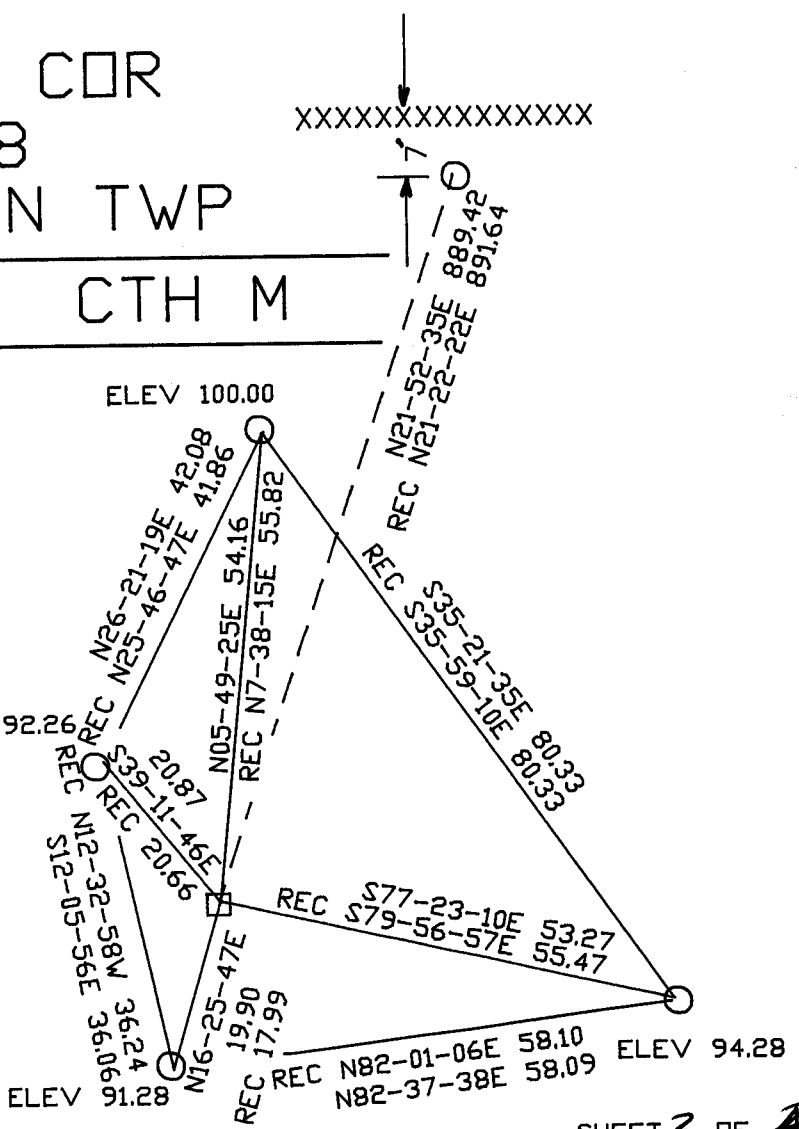
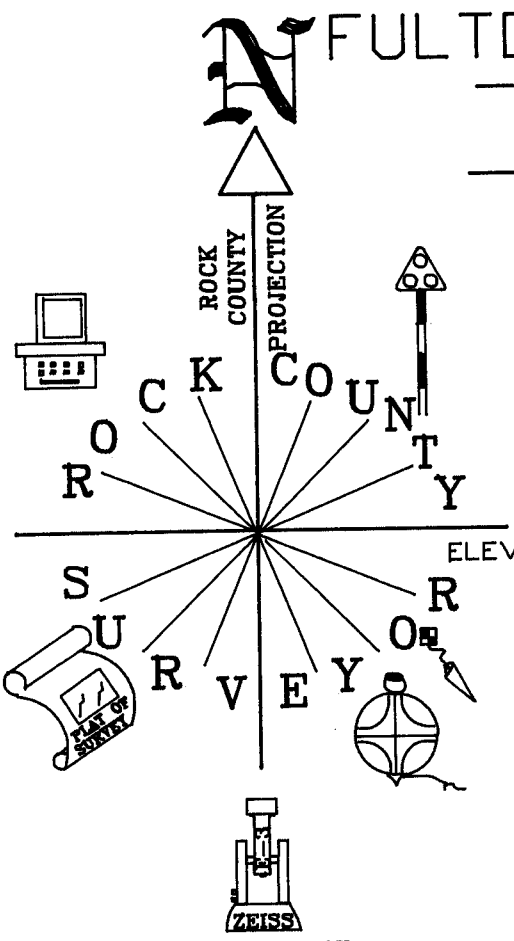
^{Emboss}
12-6-05

CORNER CODE **N-3(1)**
A.E. 7.08 REQUIREMENT

S 1/4 COR
 SEC 18
 FULTON TWP

XXXXXXXXXXXXXXXXXXXX

CTH M



OBSERVATION SHEET 277
 ASSUMED VERTICAL DATUM
 ○ FD 3/4 REROD/CAP
 □ FD CONCRETE MONUMENT
 □ LEANING / CARSONITE POST

Paul Kane
 EMBOSSED SEAL
 12-16-05

N-3 (1)

SHEET 3 OF 4