

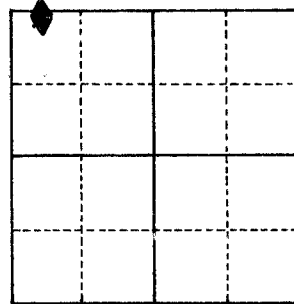
# U.S. PUBLIC LAND SURVEY MONUMENT RECORD

For Public Land Survey Corners in the  
 MILTON T. 4 N., R. 13 E.

For Miscellaneous Corners within Sec.  
 6, T. 4 N., R. 13 E.

## CORNER CODE INDEX

|   |    |    |    |    |    |    |   |   |   |    |    |    |    |    |    |    |    |    |    |    |    |    |    |    |    |
|---|----|----|----|----|----|----|---|---|---|----|----|----|----|----|----|----|----|----|----|----|----|----|----|----|----|
|   | 1  | 2  | 3  | 4  | 5  | 6  | 7 | 8 | 9 | 10 | 11 | 12 | 13 | 14 | 15 | 16 | 17 | 18 | 19 | 20 | 21 | 22 | 23 | 24 | 25 |
| A | ◆  |    |    |    |    |    |   |   |   |    |    |    |    |    |    |    |    |    |    |    |    |    |    |    |    |
| B |    |    |    |    |    |    |   |   |   |    |    |    |    |    |    |    |    |    |    |    |    |    |    |    |    |
| C | 6  |    |    |    |    |    |   |   |   |    |    |    |    |    |    |    |    |    |    |    |    |    |    |    |    |
| D |    | 5  |    |    |    |    |   |   |   |    |    |    |    |    |    |    |    |    |    |    |    |    |    |    |    |
| E |    |    | 4  |    |    |    |   |   |   |    |    |    |    |    |    |    |    |    |    |    |    |    |    |    |    |
| F |    |    |    | 3  |    |    |   |   |   |    |    |    |    |    |    |    |    |    |    |    |    |    |    |    |    |
| G |    |    |    |    | 2  |    |   |   |   |    |    |    |    |    |    |    |    |    |    |    |    |    |    |    |    |
| H |    |    |    |    |    |    |   |   |   |    |    |    |    |    |    |    |    |    |    |    |    |    |    |    |    |
| I |    |    |    |    |    |    |   |   |   |    |    |    |    |    |    |    |    |    |    |    |    |    |    |    |    |
| J |    |    |    |    |    |    |   |   |   |    |    |    |    |    |    |    |    |    |    |    |    |    |    |    |    |
| K |    |    |    |    |    |    |   |   |   |    |    |    |    |    |    |    |    |    |    |    |    |    |    |    |    |
| L | 18 |    |    |    |    |    |   |   |   |    |    |    |    |    |    |    |    |    |    |    |    |    |    |    |    |
| M |    | 17 |    |    |    |    |   |   |   |    |    |    |    |    |    |    |    |    |    |    |    |    |    |    |    |
| N |    |    | 16 |    |    |    |   |   |   |    |    |    |    |    |    |    |    |    |    |    |    |    |    |    |    |
| O |    |    |    | 15 |    |    |   |   |   |    |    |    |    |    |    |    |    |    |    |    |    |    |    |    |    |
| P |    |    |    |    | 14 |    |   |   |   |    |    |    |    |    |    |    |    |    |    |    |    |    |    |    |    |
| Q |    |    |    |    |    | 13 |   |   |   |    |    |    |    |    |    |    |    |    |    |    |    |    |    |    |    |
| R |    |    |    |    |    |    |   |   |   |    |    |    |    |    |    |    |    |    |    |    |    |    |    |    |    |
| S |    |    |    |    |    |    |   |   |   |    |    |    |    |    |    |    |    |    |    |    |    |    |    |    |    |
| T |    |    |    |    |    |    |   |   |   |    |    |    |    |    |    |    |    |    |    |    |    |    |    |    |    |
| U |    |    |    |    |    |    |   |   |   |    |    |    |    |    |    |    |    |    |    |    |    |    |    |    |    |
| V |    |    |    |    |    |    |   |   |   |    |    |    |    |    |    |    |    |    |    |    |    |    |    |    |    |
| W |    |    |    |    |    |    |   |   |   |    |    |    |    |    |    |    |    |    |    |    |    |    |    |    |    |
| X |    |    |    |    |    |    |   |   |   |    |    |    |    |    |    |    |    |    |    |    |    |    |    |    |    |
| Y |    |    |    |    |    |    |   |   |   |    |    |    |    |    |    |    |    |    |    |    |    |    |    |    |    |
| Z |    |    |    |    |    |    |   |   |   |    |    |    |    |    |    |    |    |    |    |    |    |    |    |    |    |



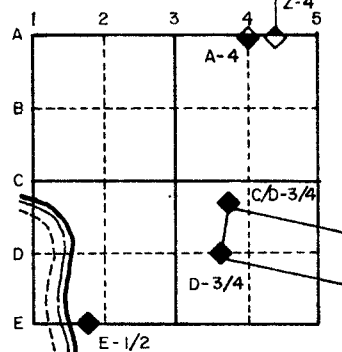
- Above code numbers are positioned Meander, Claim, or Fractional corners of the section.
- Township corner code numbers shall be applied to the corners of above typical section.

PLACE MONUMENT SYMBOL (◆) AT PROPER LOCATION ON ABOVE INDEX

IF AVAILABLE  
 STATE PLANE COORDINATES

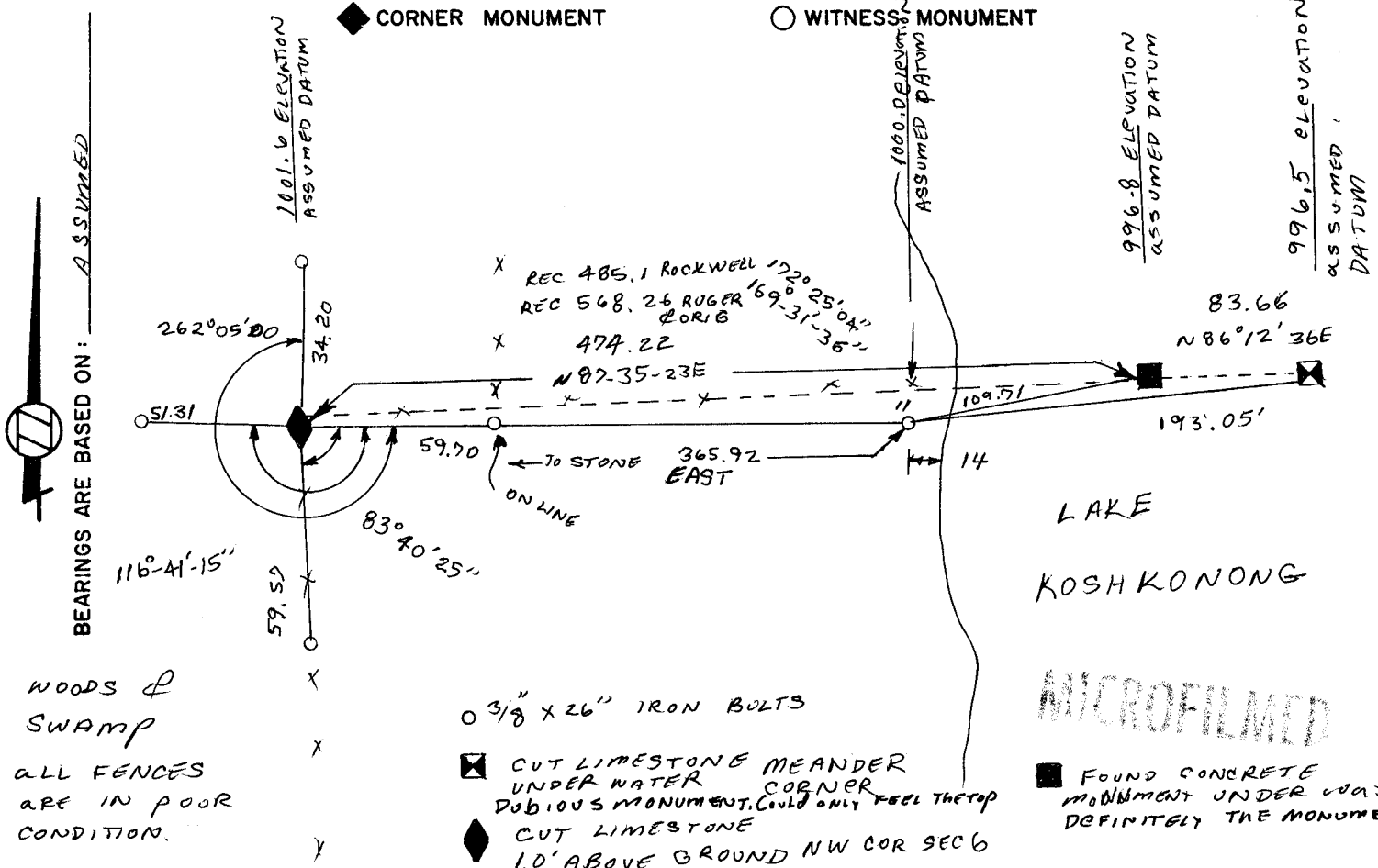
North (Y) \_\_\_\_\_ Eleve. (Z) \_\_\_\_\_  
 East (X) \_\_\_\_\_ Zone \_\_\_\_\_  
 Hor. Datum \_\_\_\_\_ Vert. Datum \_\_\_\_\_

### EXAMPLE



◆ CORNER MONUMENT

○ WITNESS MONUMENT



SHOW A PLAN VIEW DRAWING DEPICTING THE CORNER MONUMENT AND SURROUNDING PHYSICAL FEATURES, INCLUDING THE EXCAVATION AREA AND DEPTH. THE CORNER MONUMENT SHALL HAVE THE FOLLOWING CHARACTERISTICS: 1) HAVE AT LEAST TWO PREDETERMINED BREAK-OFF POINTS. 2) IF BROKEN, LEAVE A PERMANENTLY MAGNETIZED REMNANT AT THE ORIGINAL POINT. 3) MUST BE EXTENDABLE. 4) THE CAP IS INSCRIBED: ROCK COUNTY SURVEY MONUMENT - PENALTY FOR DISTURBING MARKER. 5) OR AN EXISTING CUT LIMESTONE. AN IRON PIPE 1 1/2" x 4'0" (MINIMUM) WITH AT LEAST 4 DURABLE WITNESS MONUMENTS MAY BE USED IN AREAS WHERE GROUND WATER IS WITHIN 1.0' OF THE SURFACE. IF THE CORNER IS OCCUPIED BY AN IMPROVEMENT (MANHOLE, BURIED CABLE, ETC.), ANY DURABLE, DISTINCT MONUMENT MAY BE USED AND REFERENCED WITH AT LEAST 4 DURABLE WITNESS MONUMENTS.

CORNER CODE: A2

1. Describe any record evidence, monument evidence, occupational evidence, testimonial evidence or any other material evidence you considered and whether the monument was found or set.

- 1) OCT 17 1833, W. DURHAM SET THE ORIGINAL CORNERS.
- 2) <sup>APRIL</sup> 1851 THE DIST. AT INDIANFORD WAS BUILT AND THE LINE WAS EXPANDED.
- 3) 1871 RUGER RE-MONUMENTED THE TOWNSHIP WITH CUT LIMESTONES.
- 4) 1907, G. ROCKWELL RE-MONUMENTED SUMNER TOWNSHIP (JEFF COUNTY) WITH 6"X36" CONCRETE MON. HIS FIELD NOTES SHOWS THAT HE FOUND A CUT LIMESTONE AT THE NW CORNER OF SEC 6 MILTON TWP. & HE SET THE BEAUFORT POST.

2. Describe any material discrepancy between the location of the corner as restored or re-established and the location of that corner as previously restored or re-established.

---



---



---



---

3. Was the corner restored through acceptance of an obliterated evidence location or a found perpetuated location.

THE CORNER WAS RESTORED THROUGH ACCEPTANCE OF THE FOUND PERPETUATED LOCATION. SET BEAUFORT POST BY THE NW CORNER OF SEC 6.

---

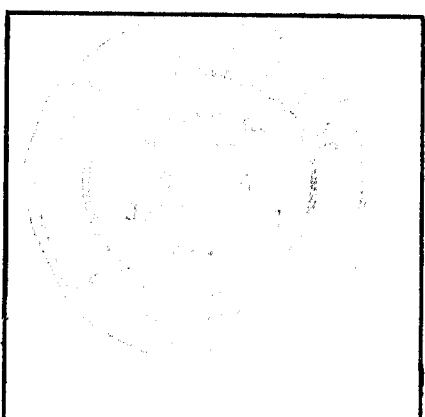


---

4. Was the corner re-established through lost corner proportionate methods? If so, show the method, including directions and distances to other public land survey corners used as evidence or used for proportioning in determination of the corner location.

NO

I, Ronald Barnes, hereby certify that the corner points as identified by the corner code index were, in a field survey on Feb 17, 1983, established, re-established, monumented, re-monumented, recovered or restored as expressed below and in conformance with the regulations and rules as required in the current manual of survey instructions of the United States Department of Interior, Bureau of Land Management.



COUNTY SURVEYOR FILING DATA  
 Date of Computer Entry \_\_\_\_\_  
 Date Received \_\_\_\_\_  
 Date Microfilmed \_\_\_\_\_  
 Treasurer's Receipt No. \_\_\_\_\_  
 Number of Included Sheets \_\_\_\_\_

AFFIX YOUR LAND SURVEYOR SEAL. **A2**