

U.S. PUBLIC LAND SURVEY MONUMENT RECORD

For Public Land Survey Corners in:

WI ADMINISTRATIVE CODE A-E 7.08 REQUIREMENT

T. 5 N., R. 13 E

CORNER CODE INDEX

A	1	2	3	4	5	6	7	8	9	10	11	12	13	14	15	16	17	18	19	20	21	22	23	24	25
B																									
C																									
D																									
E																									
F																									
G																									
H																									
I																									
J																									
K																									
L																									
M																									
N																									
O																									
P																									
Q																									
R																									
S																									
T																									
U																									
V																									
W																									
X																									
Y																									
Z																									

KOSHKONONG TWP
ROCK COUNTY WI

IF AVAILABLE
ROCK COUNTY COORDINATES PREFERRED

North _____ Elev. _____

East _____

Hor. Datum _____ Vert. Datum _____

LATITUDE _____ ELLIPS. HT. _____

LONGITUDE _____

GPS (X) _____ TRAVERSE (X) _____

BASED ON THE FOLLOWING CONTROL:

PLACE MONUMENT SYMBOL \blacklozenge AT PROPER LOCATION ON ABOVE INDEX

\blacklozenge CORNER MONUMENT \circ WITNESS MONUMENT

(a)

THOMAS WOLLIN, JEFFERSON COUNTY SURVEYOR,
PROVIDED THE STATE PLANE COORDINATES FOR
CORNER CODE #7901 COR $\frac{1}{4}$ SEC 35 T5N R13E

STATE PLANE COORDINATES N/S 310,248,588
NAD 1983/91 OF RECORD E/W 2,256,964,712

I DONALD BARNES CONVERTED THE ABOVE
COORDINATES TO THE FOLLOWING:

LATITUDE 42-50-46.04833
LONGITUDE 88-55-27.64255
MERIDIAN CONV. 0-44-20.7
SCALE FACTOR 0.9999791699

ROCK COUNTY COORDINATES (NAD 1983/91)
N/S 328,652,532
E/W 519,660,332
SCALE 0.9999977969
CONVERGENCE: THE ANGULAR DIFFERENCE
BETWEEN THE GEODETIC NORTH & THE ROCK
COUNTY MERCATOR NORTH

\oplus DEG 0 MIN 06 SEC 2.0

Donald Barnes
2/12/03

BEARINGS ARE BASED ON:

FIELD BOOK _____ PAGE # _____

SHEET 1 OF 1

SHOW A PLAN VIEW DRAWING DEPICTING THE CORNER MONUMENT AND SURROUNDING
PHYSICAL FEATURES, INCLUDING THE EXCAVATION AREA AND DEPTH.

PLANNING & ZONING COMMITTEE ADOPTED THE ABOVE FORM ON 12/2/1982

File in MILTON TWP

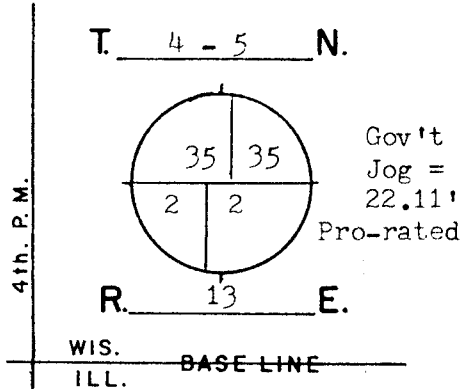
CORNER CODE A-19/20

GOVERNMENT LAND CORNER RECORD

JEFFERSON COUNTY

CORNER NO. 7901

TYPE OF MONUMENT Aluminum Magnetized
 STATE PLANE COORDINATES N. 310248.588 S₄-35
MAD 1983/01 E. 2256964.712
 ELEVATION M.S.L. DATUM: _____
Grid-Ground 1.0000543931
 FIELD BOOK Koshkonong p. 132
 DRAWN BY TRW



BASIS FOR MONUMENTATION

Original Survey, 1834-37, Wood Post & Bearing Trees
1871, Resurvey of Milton Township, Limestone Monuments
were set. Ref. Rock County Surveyors Office.
1886, Resurvey of Koshkonong Township, Limestone Mon-
uments were set. Notes recorded in the Register of
Deeds, Misc. Vol. 1, pages 389-412.
1976, Corner to N₄-2 was established by Rock County
Surveyor. The Milton stone was not found. An Aluminum
Monument was set on the Townline and in proportion to
1871 Resurvey distances.
1979, Dug for Koshkonong stone but did not find it.
I used line established by Rock County and 1871 Jog
distance and set an Aluminum Monument for the corner.
2/8/2002, G.P.S. coordinates are assigned. A Topcon
GP-SX1 single-frequency receiver was used.

SEAL:



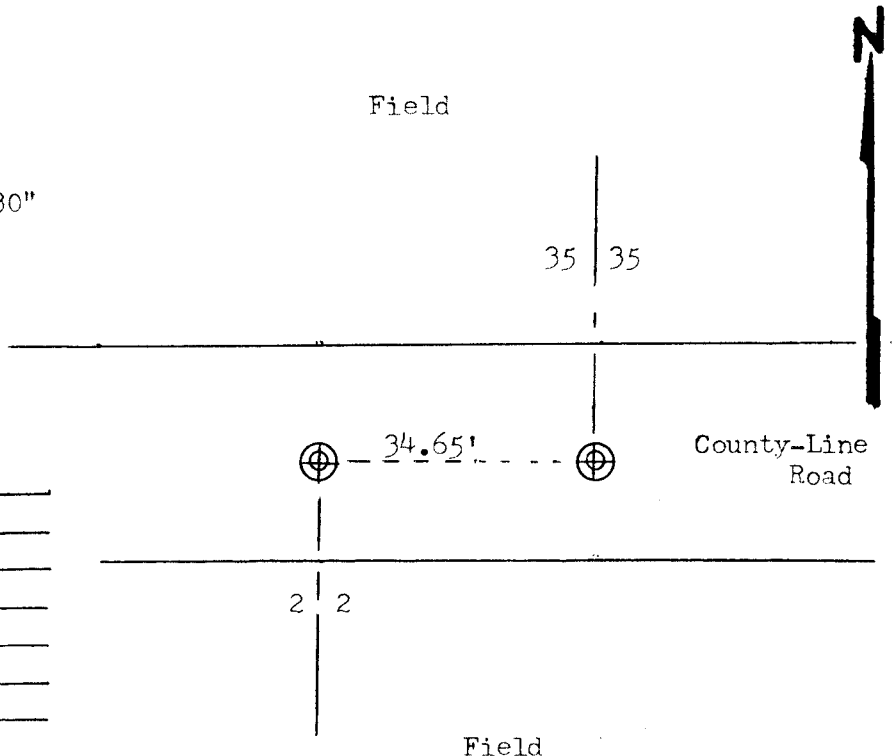
DATA SHOWN HERE ON
 CERTIFIED CORRECT:

Thomas R. Wollin
 REGISTERED LAND SURVEYOR

DATED 2/20/2002

LOCATION SKETCH

- SQUARE CUT LIMESTONE
- CONCRETE / BRASS CAP
- ALUMINUM MAGNETIZED 4" by 30"
- IRON PIPE
- T STEEL "T" BAR STAKE
- PK NAIL
- FENCE
- UTILITY POLE
- STEEL POST / SIGN



MAINTENANCE RECORD

DATE	INIT.	REMARKS

A-19/20