

Paper weight-110# (minimum)

Black nonfading ink required

U.S. PUBLIC LAND SURVEY MONUMENT RECORD

For Public Land Survey Corners In:

WI ADMINISTRATIVE CODE A-E 7.08 REQUIREMENT

T. 4 N. R. 12 E. 4th P.M.

REV 10/23/2004

USMONREC.DWG

CORNER CODE INDEX

1	2	3	4	5	6	7	8	9	10	11	12	13	14	15	16	17	18	19	20	21	22	23	24	25	
A																									A
B	6					5				4				3				2					1		B
C																									C
D																									D
E																									E
F																									F
G	7					8				9				10				11					12		G
H																									H
J																									J
K	18					17				16				15				14					13		K
L																									L
M																									M
N																									N
O																									O
P	19					20				21				22				23					24		P
Q																									Q
R																									R
S																									S
T	30					29				28				27				26					25		T
U																									U
V																									V
W																									W
X	31					32				33				34				35					36		X
Y																									Y
Z																									Z

FULTON TWP

ROCK COUNTY WI

IF AVAILABLE
ROCK COUNTY COORDINATES PREFERRED

North _____ Elev. _____

East _____

Hor. Datum _____ Vert. Datum _____

LATITUDE _____ ELLIPS. HT. _____

LONGITUDE _____

NAD83(91) _____ NETWORK ADJ. YR _____

GPS (X) _____ TRAVERSE (X) _____

BASED ON THE FOLLOWING CONTROL:

PLACE MONUMENT SYMBOL AT PROPER LOCATION ON ABOVE INDEX

CORNER MONUMENT

WITNESS MONUMENT

BEARINGS ARE BASED ON: (a) _____

FIELD BOOK _____ PAGE # _____

SHEET 1 OF 2

SHOW A PLAN VIEW DRAWING DEPICTING THE CORNER MONUMENT AND SURROUNDING PHYSICAL FEATURES, INCLUDING THE EXCAVATION AREA AND DEPTH.

PLANNING & ZONING COMMITTEE ADOPTED THIS FORM ON 12/2/1982

CORNER CODE R 1/2

FU_M.P.650

(B) Describe any record evidence, monument evidence, occupational evidence, testimonial evidence or any other material evidence you considered, and whether the monument was found or placed.

1834 (APR 4TH) HARRISON EAST BETWEEN SECS 19 & 30 T4N R12E
4TH M
363 ENTER BOTTOM
396 TRAIL NE
799.92 INT RIGHT BANK OF ROCK RIVER SET MEANDER POST
{BURR O 12 S31W 174.24' BURR O 8 N87W 172.92'
BURR O 12 BURR O 8} MARKED
LAND ROLLING 2ND RATE TIMBER BURR O
UNDERGROWTH ? & GRASS & WEEDS
1836 (AUG 2) BURNHAM WEST RANDOM BETW SECS 19 & 30
3597? INT. LEFT BANK ROCK RIVER
4280.1? INT. RIGHT BANK 22.44' SOUTH OF MP FIRST RATE
BUR OAK OPENINGS
EAST CORRECTED BETW. SECS 30 & 19
709.5 SET MP ON LEFT BANK BUR OAK 10 N41E 10.56'
BUR OAK 8 S44 1/2W 25.74'
1640.1 SET 1/4 SEC POST YELLOW OAK 16 NORTH 41W 7.26'
W. OAK 18 S26E 62.7'
4280.1 TO CORNERS
1875 RUGER VOL 2 PG 200 FD OLD STAKE & STUMPS OF BOTH BTS.
SET LIME STONE 16X8X6. VAR 6-52 804.54 TO SW COR SEC
19
1880 LEE VOL 2 PG 315 FD STUMP OF SW BT VAR 7-30 804.54 (R)
TO SW COR SEC 19

DUG WITH CRUZ AIR AND FD LIMESTONE 16X8X6. LIMESTONE WAS ABOUT 0.4' BELOW GRADE. ONLY STONE IN LARGE HOLE. REPLACED LS WITH 3/4X24 REROD. PLACED LS ON TOP OF GROUND ON WEST SIDE OF REROD. PLACED 2 MAGNETS ON NORTH SIDE OF REROD; PLACED CARSONITE ON SOUTH SIDE OF REROD. MP IS ABOUT 29' WEST OF WEST WATERS EDGE OF ROCK RIVER.

C) Was the corner restored through acceptance of (1) an obliterated evidence location, or, (2) a found perpetuated location?

ACCEPTED FD PERPETUATED LOCATION.

D) Describe any material discrepancy between the location of the corner as restored or reestablished and the location of that corner as previously restored or reestablished by distance and direction. Show the discrepancy on the plan view drawing under (a), above. Show the distances between the corner as previously restored or reestablished and (1) the corner as restored or reestablished, and (2) to at least 4 of the witness monuments shown on the drawing in (a), above.

(E) Was the corner reestablished through lost corner proportionate methods? If so, show the method, including the directions and distances to other public land survey corners used as evidence or used for proportioning the corner location.

I, Donald Barnes, hereby certify that the corner location as identified by the corner code index was determined by me under my direction and control and that this U.S. Public Land Survey Monument Record is correct and complete to the best of my knowledge and belief.

Seal

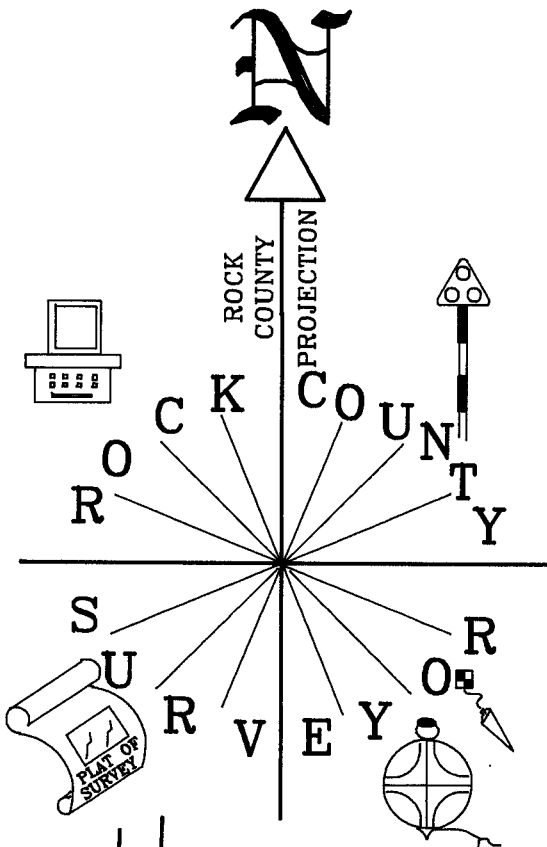
Emboss

SHEET 1 OF 2

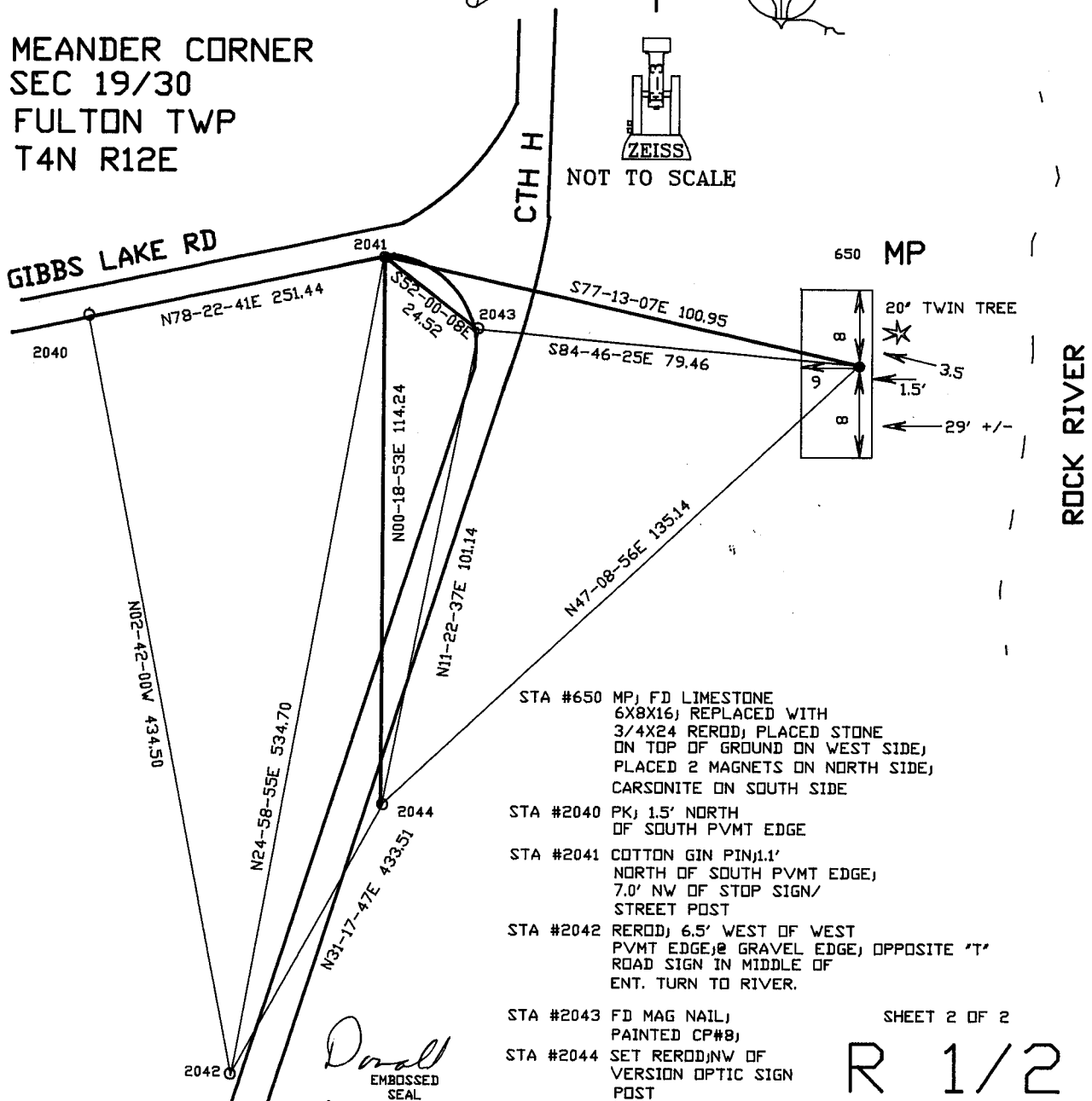
OCT 30, 2007

CORNER CODE **R 1/2**

A.E. 7.08 REQUIREMENT



MEANDER CORNER
 SEC 19/30
 FULTON TWP
 T4N R12E



NOT TO SCALE

- STA #650 MP; FD LIMESTONE 6X8X16; REPLACED WITH 3/4X24 REROD; PLACED STONE ON TOP OF GROUND ON WEST SIDE; PLACED 2 MAGNETS ON NORTH SIDE; CARSONITE ON SOUTH SIDE
- STA #2040 PK; 1.5' NORTH OF SOUTH PVMT EDGE
- STA #2041 COTTON GIN PIN; 1.1' NORTH OF SOUTH PVMT EDGE; 7.0' NW OF STOP SIGN/ STREET POST
- STA #2042 REROD; 6.5' WEST OF WEST PVMT EDGE; @ GRAVEL EDGE; OPPOSITE 'T' ROAD SIGN IN MIDDLE OF ENT. TURN TO RIVER.
- STA #2043 FD MAG NAIL; PAINTED CP#8;
- STA #2044 SET REROD; NW OF VERSION OPTIC SIGN POST

SHEET 2 OF 2

R 1/2

Donall
 EMBOSSED SEAL
Bauer
 OCT 30, 2007