

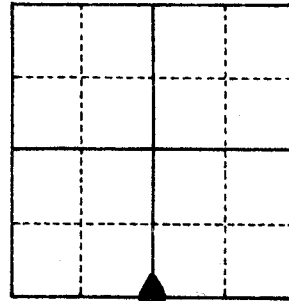
U.S. PUBLIC LAND SURVEY MONUMENT RECORD

For Public Land Survey Corners in
MILTON TWP. T. 4 N., R. 13 E.

For Miscellaneous Corners within
Sec. 13, T. 4 N., R. 13 E.

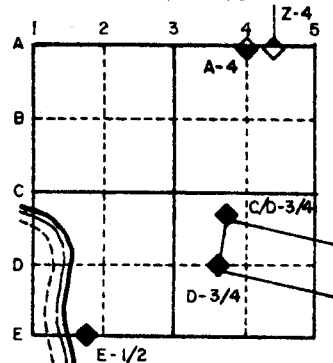
CORNER CODE INDEX

	1	2	3	4	5	6	7	8	9	10	11	12	13	14	15	16	17	18	19	20	21	22	23	24	25			
A																												
B																												
C	6																											
D		5																										
E			4																									
F				3																								
G					2																							
H																												
I																												
J																												
K																												
L	18																											
M		17																										
N			16																									
O				15																								
P					14																							
Q						13																						
R																												
S																												
T																												
U	30																											
V		29																										
W			28																									
X				27																								
Y					26																							
Z						25																						
							24																					
								23																				
									22																			
										21																		
											20																	
												19																
													18															
														17														
															16													
																15												
																	14											
																		13										
																			12									
																				11								
																					10							
																						9						
																							8					
																								7				
																									6			
																										5		
																											4	
																												3
																												2
																												1



1. Above code numbers are positioned Meander, Claim, or Fractional corners of the section.
2. Township corner code numbers shall be applied to the corners of above typical section.

EXAMPLE

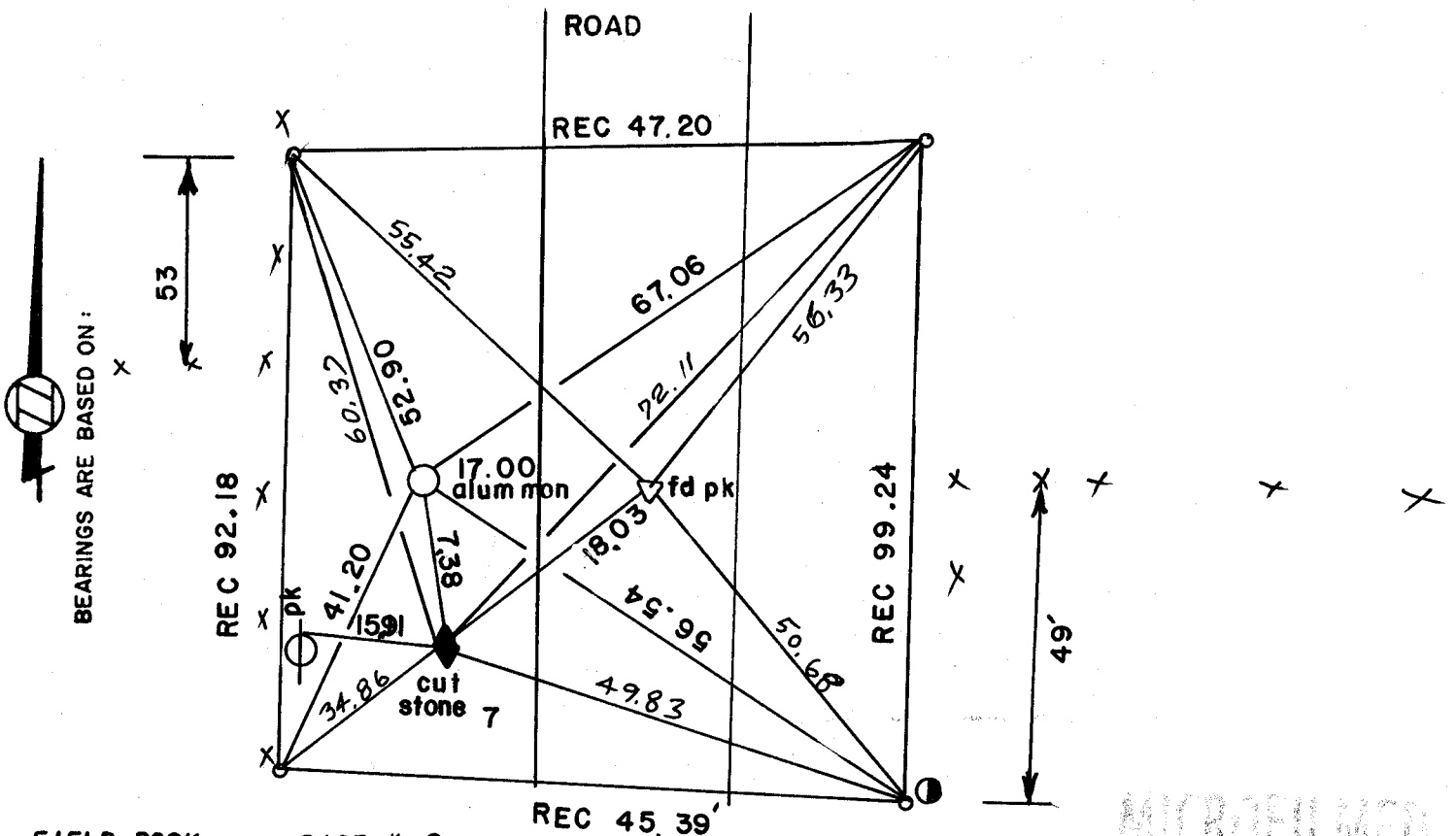


PLACE MONUMENT SYMBOL (◆) AT PROPER LOCATION ON ABOVE INDEX

IF AVAILABLE
STATE PLANE COORDINATES

North (Y) _____ Eleve. (Z) _____
 East (X) _____ Zone _____
 Hor. Datum _____ Vert. Datum _____

(a.) ◆ CORNER MONUMENT ○ WITNESS MONUMENT 3/8" X 28" BOLT



FIELD BOOK _____ PAGE # 2

MICROFILMED

SHOW A PLAN VIEW DRAWING DEPICTING THE CORNER MONUMENT AND SURROUNDING PHYSICAL FEATURES, INCLUDING THE EXCAVATION AREA AND DEPTH. THE CORNER MONUMENT SHALL HAVE THE FOLLOWING CHARACTERISTICS: 1) HAVE AT LEAST TWO PREDETERMINED BREAK-OFF POINTS. 2) IF BROKEN, LEAVE A PERMANENTLY MAGNETIZED REMNANT AT THE ORIGINAL POINT. 3) MUST BE EXTENDABLE. 4) THE CAP IS INSCRIBED: ROCK COUNTY SURVEY MONUMENT - PENALTY FOR DISTURBING MARKER. 5) OR AN EXISTING CUT LIMESTONE. AN IRON PIPE 1 1/2" X 4'0" (MINIMUM) MAY BE USED IN AREAS WHERE GROUND WATER IS WITHIN ONE FOOT OF THE SURFACE. IF THE CORNER IS OCCUPIED BY AN IMPROVEMENT (MANHOLE, BURIED CABLE, ETC.) ANY DURABLE, DISTINCT MONUMENT MAY BE USED. CORNERS SHALL BE REFERENCED WITH AT LEAST 4 DURABLE WITNESS MONUMENTS. WITNESS MONUMENTS SHALL BE MADE OF CONCRETE, NATURAL STONE, IRON OR OTHER EQUALLY DURABLE MATERIAL, EXCEPT WOOD. DESCRIBE THE CORNER AND THE WITNESS MONUMENTS.

CORNER CODE: N 23

- (b.) Describe any record evidence, monument evidence, occupational evidence, testimonial evidence or any other material evidence you considered, and whether the monument was found or placed.

FOUND CUT LIMESTONE 2' DEEP. THE STONE WAS NOT DAMAGED. SET A MAGNET BY THE STONE & SET THE TOP 3/4 OF A POLY MONUMENT ON TOP OF THE STONE. ALSO SET A CARSONITE POST. BROKE OFF TOP PART OF ALUM MONUMENT THAT I SET IN APRIL 21 1980.

- (c.) Was the corner restored through acceptance of (1) an obliterated evidence location, or, (2) a found perpetuated location?

ACCEPTED CUT LIMESTONE.

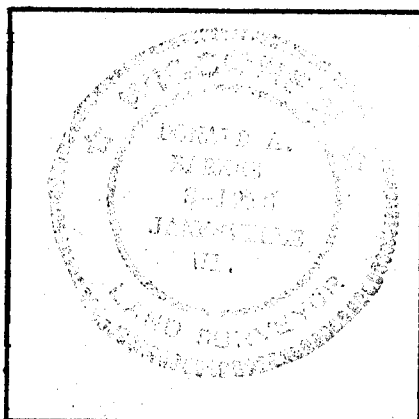
- (d.) Describe any material discrepancy between the location of the corner as restored or reestablished and the location of that corner as previously restored or reestablished by distance and direction. Show the discrepancy on the plan view drawing under (a), above. Show the distances between the corner as previously restored or reestablished and (1) the corner as restored or reestablished, and (2) to at least 4 of the witness monuments shown on the drawing in (a), above.

THE LOCATION OF THE CUT LIMESTONE IS DIFFERENT THAN THE CORNER SET IN VOL 6 PAGE 25 OF THE COUNTY SURVEYORS RECORDS. Also found a pk nail at the center of the road and on line with the E/W fence line on the east side of the road. This pk may have been used as the corner in older surveys.

- (e.) Was the corner reestablished through lost corner proportionate methods? If so, show the method, including the directions and distances to other public land survey corners used as evidence or used for proportioning in determining the corner location.

NO

I, Donald Barnes, hereby certify that the corner points as identified by the corner code index were, in a field survey on APRIL 22, 1983, established, re-established, monumented, re-monumented, recovered or restored as expressed below and in conformance with the regulations and rules as required in the current manual of survey instructions of the United States Department of Interior, Bureau of Land Management.



COUNTY SURVEYOR FILING DATA

Date of Computer Entry _____

Date Received _____

Date Microfilmed _____

Treasurer's Receipt No. _____

Number of Included Sheets 1

AFFIX YOUR LAND SURVEYOR SEAL.

N23

ABEX

SURVEY LTD.

REGISTERED LAND SURVEYORS

136 W. MAIN, CAMBRIDGE, WI 53423

May 6, 1983

Mr. Donald Barnes
Rock County Surveyor
Court House
51 South Main Street
Janesville, Wisconsin 53545

Re: $S\frac{1}{4}$ corner Section 13-4-13, C.S.M. Vol. 3 Page 136.

Dear Don:

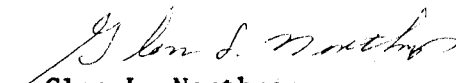
Per your requested clarification of what was used for the subject $S\frac{1}{4}$ corner, I have reviewed the Bridwell Engineering Company files and worksheets for this work.

The $S\frac{1}{4}$ corner position was located by tying into surveys done along Bowers Lake Road north of this corner by Thorp S-653 and computing a coordinate from his ties to the intersection of the center of Bowers Lake Road and the east-west occupation fence at the south line of the Section. From this point, I went 16 feet west for the $S\frac{1}{4}$ corner coordinate. This point wasn't actually field located or set. I have no knowledge of the P-K nail shown in the c/1 of Bowers Lake Road on your dossier sheet.

As nearly as I can determine, the $S\frac{1}{4}$ corner position shown on C.S.M. Vol. 3 P. 136 would be nearly in line with the cut stone shown on your tie sheet for this corner.

I think this should clarify the matter, if there is anything else, call me.

Sincerely,


Glen L. Northrop

GLN:lt

cc. Mr. Otto Shroeder
Mr. Harry M. Bridwell
Mr. Alden Kaukl

MAIL BOX 369 PHONE 608 423-3331