

U.S. PUBLIC LAND SURVEY MONUMENT RECORD

For Public Land Survey Corners in:

WI ADMINISTRATIVE CODE A-E 7.08 REQUIREMENT

T. 4 N., R. 12 E

CORNER CODE INDEX

A	1	2	3	4	5	6	7	8	9	10	11	12	13	14	15	16	17	18	19	20	21	22	23	24	25
B																									
C	6																								
D																									
E																									
F																									
G	1																								
H																									
I																									
J																									
K																									
L	18																								
M																									
N																									
O																									
P	19																								
Q																									
R																									
S																									
T	30																								
U																									
V																									
W																									
X	31																								
Y																									
Z																									

FULTON TWP
ROCK COUNTY WI

IF AVAILABLE
ROCK COUNTY COORDINATES PREFERRED

North _____ Elev. _____

East _____

Hor. Datum _____ Vert. Datum _____

LATITUDE _____ ELLIPS. HT. _____

LONGITUDE _____

GPS (X) _____ TRAVERSE (X) _____

BASED ON THE FOLLOWING CONTROL:

PLACE MONUMENT SYMBOL AT PROPER LOCATION ON ABOVE INDEX

CORNER MONUMENT

WITNESS MONUMENT

(a)

BEARINGS ARE BASED ON:

FIELD BOOK _____ PAGE # _____

SHEET 1 OF 4

SHOW A PLAN VIEW DRAWING DEPICTING THE CORNER MONUMENT AND SURROUNDING PHYSICAL FEATURES, INCLUDING THE EXCAVATION AREA AND DEPTH.

PLANNING & ZONING COMMITTEE ADOPTED THE ABOVE FORM ON 12/2/1982

CORNER CODE V-25

FU613

OF COR. FOUND S.E. BEARING TREE AND WHERE STUMP OF NW. BEARING TREE HAD BEEN DUG UP. ESTABLISHED COR. FROM THEM. COR VAR 4-11

1871 (AUG22) RUGER MILTON TWP REMON. SOUTH ON WEST LINE OF NW 1/4 OF SEC 30 ON A VAR 6-55 AT 2657.16 INTERSECT 1/4 COR FOUND LIME STONE AT COR ALSO FOUND STUMPS OF SOUTH BARING TREES. SOUTH ON WEST LINE OF SW 1/4 OF SEC 30 ON A VAR 6-55 AT 2655.18 INTERSECTED SOUTH BOUNDARY LINE 0.66' WEST OF COR. COR VAR 6-56 PLACED 6"X6" CUT LIMESTONE

1947 SUNNY #1478 CALLS FOR COR BUT STATES NOTHING ABOUT MON. 2628.X TO N 1/4 COR SEC 36, 2660.X TO W 1/4 COR SEC 36

1970 BATTERMAN VOL 5 PG 176 FROM FB #303 PG 2 FD CUT STONE 4"X6" & REF. SAME

1975 COMBS CSM VOL 4 PG 292 FD PK CHECKED WITH REFERENCES.

1983 BARNES V-1 SET 18" BERNTSEN W-1-C ON TOP OF CUT LIMESTONE & USED FD REFENCES.

1983 BARNES FB#2 PG 14 FD RECORD 4 3/8" IRON PINS. SET 18" POLY MON ON TOP OF CUT LIMESTONE. MEASURED TO NE, SW, & NW REFERENCE PINS.

1983 BARNES V-3 2421.63 TO N 1/4 COR SEC 31 MILTON TWP

1983 BARNES REMON #6794 NO-14-17E 2658.85 TO E 1/4 COR SEC 25, SB7-38-46E 2421.63 TO S 1/4 COR SEC 30 MILTON TWP

1984 COMBS CSM VOL 11 PG 554 FD PK

2002 LATHROP #14491 BEING MICROFILMED

FD 4 RECORD REFERENCE TIES, BROKEN POLY MON., AND CUT LIMESTONE. IT APPEARS THE NE REFERENCE PIN WAS DISTURBED. THIS IS BASED ON THE FACT THAT THE DISTANCES TO THE NW REFERENCE MON., THE SE REFERENCE MON., AND THE CUT STONE ARE SUBSTANTIALLY DIFFERENT FROM RECORD. ALSO THE FIELD NOTES SHOWS THE NE REFERENCE PIN AS BEING NORTH OF THE E/W FENCE LINE AND EAST OF THE N/S FENCE LINE. SINCE THE BROKEN POLY MON IS NOT ON TOP OF THE CUT L.S., IT PROBABLY WAS MOVED. A MAGNETIC IS ON TOP OF THE STONE. MONUMENT IS IN THE CENTER OF THE PVMT INTERSECTION. DID NOT PLACE ANY OTHER MONUMENT ON TOP OF CUT L.S. NOR DID I REMOVE THE BROKEN POLY MON.

C) Was the corner restored through acceptance of (1) an obliterated evidence location, or, (2) a found perpetuated location?

ACCEPTED FD CUT L.S.

D) Describe any material discrepancy between the location of the corner as restored or reestablished and the location of that corner as previously restored or reestablished by distance and direction. Show the discrepancy on the plan view drawing under (a), above. Show the distances between the corner as previously restored or reestablished and (1) the corner as restored or reestablished, and (2) to at least 4 of the witness monuments shown on the drawing in (a), above.

BROKEN POLY MON WAS PROBABLY MOVED.

I, Donald Barnes, hereby certify that the corner location as identified by the corner code index was determined by me under my direction and control and that this U.S. Public Land Survey Monument Record is correct and complete to the best of my knowledge and belief.

Seal
Donald Barnes

Emboss

0.C.T 132004

SHEET 1 OF 34

CORNER CODE

A.E. 7.08 REQUIREMENT

V-25

FU613

(B) Describe any record evidence, monument evidence, occupational evidence, testimonial evidence or any other material evidence you considered, and whether the monument was found or placed.

1836 BRINK NORTH EAST SIDE SEC 36 T4N R12E VAR FOUND BY
OBSERVATION 7 45'E
969.54 BLACK OAK 12 IN DIAMETER
2640 SET QUARTER SECTION POST BUR OAK 12 N13 1/2W
29.04' BUR OAK 20 S28 1/2W 82.5'
4180.44 BUR OAK 12 IN DIAMETER
5280 SET POST CORNER SECTIONS 25 & 36 BUR OAK 16
S14W 14.52' BUR OAK N20W 40.92' LAND
ROLLING SECOND RATE BUR WHITE AND BLACK OAK
RED ROOT & C

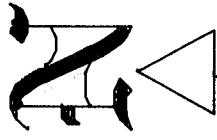
1836 BRINK NORTH EAST SIDE SECTION 25
1417.02 BUR OAK 12 IN DIAMETER
2640 SET QUARTER SECTION POST WHITE OAK 16 S6W
77.88' WHITE OAK 18 N54W 140.58'
5280 SET POST CORNER SECTIONS 24 & 25 BUR OAK 12
N21W 20.46' BUR OAK 11 S33 1/2W 21.12' LAND &
SAME

1836 (JULY6) BURNHAM WEST RANDOM BETW SECS 30 & 31 T4N
R13E
5049 INT RANGE LINE 59.4' SOUTH BUR OAK 12 N6 1/2E
45.54' BUR OAK 10 S10E 3.3' FIRST RATE W BUR
OAK OPENINGS
EAST CORRECTED BETWN 31 & 30
NO STATIONS
2409 SET 1/4 SEC POST BUR OAK 12 S52 1/2W 56.1' NO
OTHER BEARING
NO STATIONS
5049 TO CORNERS

NO ORIGINAL GOV. SURVEYOR FIELD NOTES ON FILE -COPY
FROM WI COMMISSIONER OF PUBLIC LAND WEB SITE

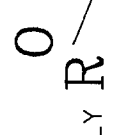
1836 (JULY) BURNHAM EAST RANDOM BETW. 25 & 36
5238.42 INT. RANGE LINE AT STAKE
SAME
WEST MARKED LINE BETW. 36 & 25
NO STATIONS
2618.88 SET 1/4 SEC POST BUR OAK 14 N20W 15.18' BUR
OAK 10 S48E 25.08'
2694.78 BUR OAK 10" IN DI.
5238.42 TO CORNERS
1864 LOCKE VOL 1 PG 220 & #1341 FD STUMP OF S B. TREE AND
WHERE N. B. TREE WAS DUG UP AND BLUE HARD HEAD ON
CORNER. VAR 8-05 2620.20 TO S 1/4 COR SEC 25, & VAR 7-15
2653.20 TO E 1/4 COR SEC 25
1867 LOCKE VOL 1 PG 297 & #1482 FD COR AS SET BY SELF (SEE
SEC 25) VAR 7-20 2659.80 TO E 1/4 COR SEC 36,
1871 (AUG16) RUGER MILTON TWP REMON. NORTH ON WEST LINE OF
SW 1/4 OF SEC 31 ON A VAR 6-20 AT
2656.83 INTERSECTED 1/4 LINE AT 1/4 COR. FOUND STAKE
SURROUNDED BY HARD HEAD STONES AT COR.
ALSO FOUND REMAINS OF STUMPS OF BOTH
BEARING TREES.
NORTH ON WEST LINE OF N.W. 1/4 OF SEC 31
ON A VAR 6-20 AT
2662.66 INTERSECTED NORTH BOUNDARY LINE AT COR.
FOUND HARD HEAD STONE ON COR. ALSO FOUND
WHERE THE STUMPS OF THE 4 BEARING TREES HAD
BEEN DUG OUT
EAST ON NORTH LINE OF NW 1/4 OF SEC 31 ON
A VAR 4-10 AT
2420.88 INTERSECTED 1/4 LINE COR FOUND OLD STAKE AT
COR. ALSO FOUND SW BEARING TREE.
EAST ON NORTH LINE OF NE 1/4 OF SEC 31 ON
A VAR 3-45 AT
2647.92 INTERSECTED EAST BOUNDARY LINE 19.8' SOUTH

Donald Baer
OCT 13, 2004

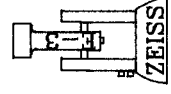
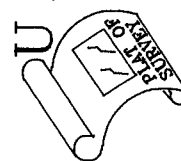


PROJECTION
ROCK COUNTY

COUNTY



SURVEY



NOT TO SCALE
OBSERVATION SHEETS

CUT LIMESTONE

BROKEN POLY R
N11-45-39W
0.31'

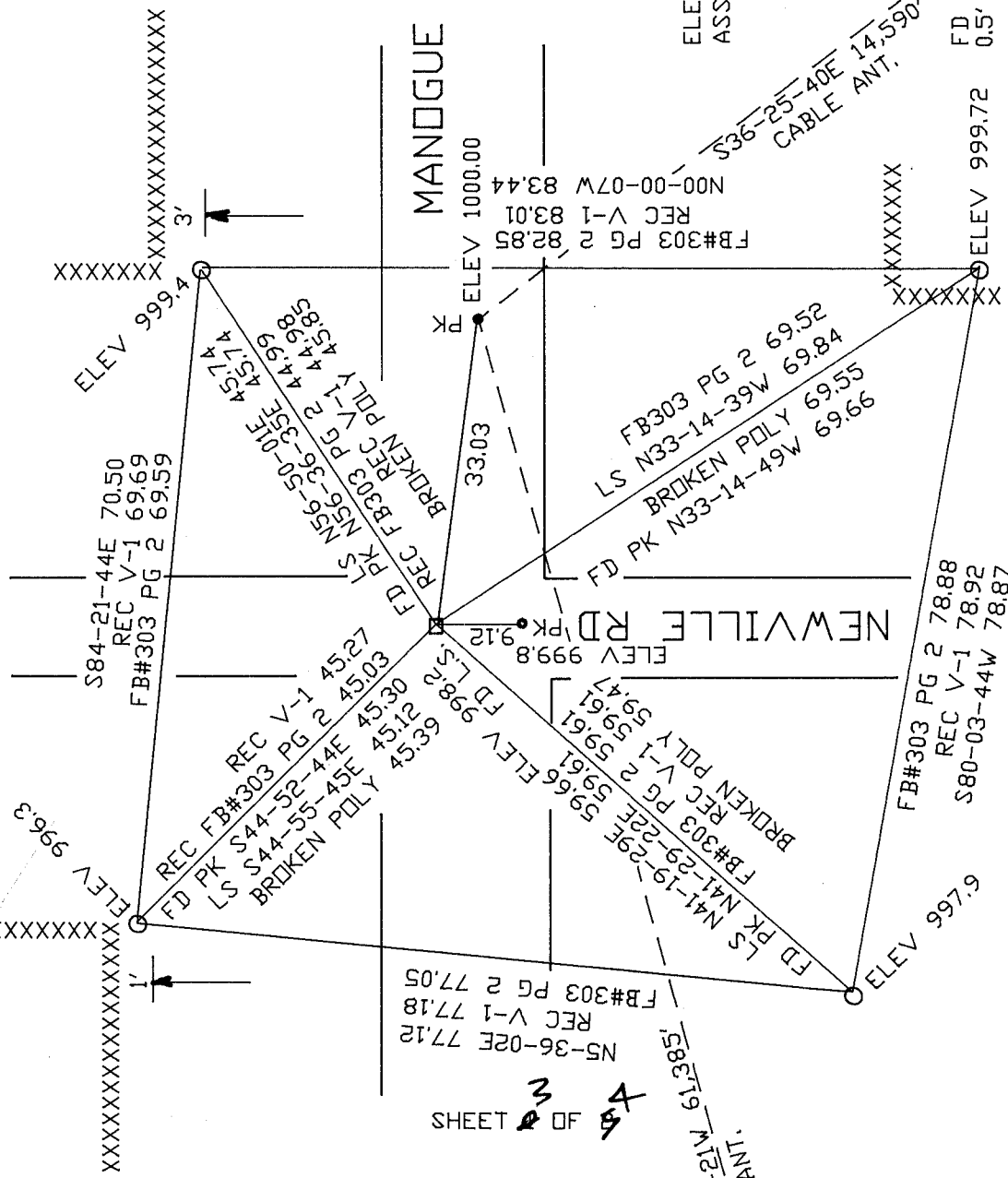
NE COR
SEC 36
FULTON TWP
T4N R12E

ELEVATIONS ARE BASED ON
ASSUMED DATUM.

O FD 3/8"
PINS

FD CUT LS
FD 1.5' BELOW
PVMT.

FD BROKEN POL MON
0.5' BELOW PVMT.



SHEET 3 OF 4

EMBOSSED SEAL
Donald Barnes
 Oct 13 2004

V-25

S73-51-21W 61.985'
--- TRAIL ANT.

EMBOSSED SEAL
D. Baures
 Oct 13 2004

FD CI N/COR SEC 36 SHEET 44

V-25

