

U.S. PUBLIC LAND SURVEY MONUMENT RECORD

For Public Land Survey Corners In:

WI ADMINISTRATIVE CODE A-E 7.08 REQUIREMENT

T. 4 N. R. 13 E.

CORNER CODE INDEX

1	2	3	4	5	6	7	8	9	10	11	12	13	14	15	16	17	18	19	20	21	22	23	24	25	
A																									A
B	6					5				4				3			2					1			B
C																									C
D																									D
E																									E
F																									F
G	7					8				9				10			11					12			G
H																									H
J																									J
K																									K
L	18					17				16				15			14					13			L
M																									M
N																									N
O																									O
P	19					20				21				22			23					24			P
Q																									Q
R																									R
S																									S
T	30					29				28				27			26					25			T
U																									U
V																									V
W																									W
X	31					32				33				34			35					36			X
Y																									Y
Z																									Z

MILTON TWP
ROCK COUNTY WI

IF AVAILABLE
ROCK COUNTY COORDINATES PREFERRED

North _____ Elev. _____

East _____

Hor. Datum _____ Vert. Datum _____

LATITUDE _____ ELLIPS. HT. _____

LONGITUDE _____

GPS (X) _____ TRAVERSE (X) _____

BASED ON THE FOLLOWING CONTROL:

PLACE MONUMENT SYMBOL AT PROPER LOCATION ON ABOVE INDEX

CORNER MONUMENT

WITNESS MONUMENT

(a)

BEARINGS ARE BASED ON: _____

FIELD BOOK _____ PAGE # _____

SHEET 1 OF 6

SHOW A PLAN VIEW DRAWING DEPICTING THE CORNER MONUMENT AND SURROUNDING PHYSICAL FEATURES, INCLUDING THE EXCAVATION AREA AND DEPTH.

PLANNING & ZONING COMMITTEE ADOPTED THE ABOVE FORM ON 12/2/1982

CORNER CODE V-25

MI613

(B) Describe any record evidence, monument evidence, occupational evidence, testimonial evidence or any other material evidence you considered, and whether the monument was found or placed.

1836 BRINK VAR FOUND BY OBSERVATION 6-45E NORTH ON EAST
SIDE SECTION 36

1980 ENTER PRAIRIE @ WEST
2640 SET QUARTER SECTION POST CUR OAK 10 S1W
672.54' BUR OAK 16 S13 1/2E 588.72'
5214 LEAVE PRAIRIE & WEST
5280 SET POST CORNER SECTIONS 25 & 36 BUR OAK 12
S25 1/2W 67.98' BUR OAK 20 N 1/2 W 491.7' LAND
ROLLING SECOND RATE EXCEPT PRAIRIE THINLY
TIMBERED WITH BURR WHITE AND BLACK OAK RED
ROOT ROBIN WEED PRAIRIE GRASS & C.

NORTH EAST SIDE SECTION 25

2640 SET QUARTER SECTION POST BUR OAK 9 S20W
41.58' BUR OAK 10 W15W 62.04'
4092 WHITE OAK 18 IN DIAMETER
5280 SET POST CORNER SECTIONS 24 & 25 WHITE OAK
10 S36W 65.34' LAND ROLLING FIRST RATE BUR
AND WHITE OAK RED ROOT ROBIN WEED & C.

1836 MULLETT WEST RANDOM BETWEEN SECS 30 & 31

4620 DRY PRAIRIE
5074.08 INT. RANGE LINE 57.42' W.
WHITE OAK 14 S50E 304.92; WHITE OAK 18 N78E
300.96' FIRST RATE BUR OAK OPENINGS & DRY
PRAIRIE.

EAST CORRECTED BETWEEN SECS 31 & 30 NO
STATIONS.

2434.08 SET 1/4 SECS POST BURR OAK N38W 23.1', BUR
OAK 10 N61E 28.38'

4269.54 BUR OAK 9 IN DIA.

2074.08 TO CORNERS

1836 MULLETT EAST RANDOM BETWEEN SECS 25 & 36

5275.38 INT. RANGE LINE 86.46 SOUTH. WEST 1/2 BUR
OAK OPENING - EAST HALF DRY RICH PRAIRIE
WEST CORRECTED BETW. SECS 36 & 25 NO
STATIONS

2673.36 SET 1/4 SEC POST BUR OAK 11 S61 1/2W
BUR OAK 16 N48 1/2 E

5275.38 TO CORNERS

1871 RUBER REMONUMENTATION NOTES COMMENCED AT NE
CORNER OF SECTION 36 (MILTON TWP)

COMMENCED AT NE COR OF SEC 36 FOUND OLD STAKE WITH
STONES NEAR IT ALSO FOUND SW BEARING TREE.

SOUTH ON EAST LINE OF NE 1/4 OF SEC 36 ON A VAR 5-24 AT

2643.3 INTERSECTED 1/4 LINE 10.56' EAST OF 1/4 COR
FOUND OLD STAKE COR VAR 5-31

SOUTH ON EAST LINE OF SE 1/4 LINE OF SEC 36 ON A VAR 5-48
AT

2642.14 INTERSECTED SOUTH BOUNDARY LINE 14.68' EAST
OF COR. STONE MONUMENT ON COR ERECTED IN
SURVEY OF TOWN OF HARMONY COR VAR 5-29

EAST ON NORTH LINE OF NW 1/4 OF SEC 36 ON A VAR 6-35 AT

2642.97 INTERSECTED 1/4 LINE 6.6' NORTH OF 1/4 COR
FOUND LIMESTONE AT COR. ALSO FOUND STUMP
OF SW BEARING TREE HAD BEEN DUG UP. COR
VAR 6-26

SHEET 1 OF 6

V-25

Donald Baines

5/15/02

MI613

EAST ON NORTH LINE OF NE 1/4 OF SEC 36 ON A VAR 6-35 AT 2640.82 INTERSECTED EAST BOUNDARY LINE 6.6' NORTH OF COR. COR VAR 6-26

NORTH ON EAST LINE OF SE 1/4 OF SEC 25 ON A VAR 5-35 AT 2645.28 INTERSECTED 1/4 LINE 6.6' WEST OF 1/4 COR. FOUND OLD STAKE AT COR. ALSO FOUND STUMPS OF BEARING TREES. COR VAR 5-26

NORTH ON EAST LINE OF NE 1/4 OF SEC 25 ON A VAR 5-25 AT 2640.16 INTERSECTED NORTH BOUNDARY LINE .66' EAST OF COR. FOUND OLD STAKE AT COR. ALSO FOUND STUMP OF N.W. BEARING TREE AND WHERE STUMP OF SW BEARING TREES HAD BEEN DUG UP. COR VAR 5-26

1871 RUGER VOL 2 PG 80 CALLS FOR STONE MONUMENT & 2437.88 TO S 1/4 CORNER OF SECTION 20.

1875 RUGER VOL 2 PG 198 CALLS FOR STONE MONUMENT.

1899 BROWN VOL 2 PG 509 CALLS FOR MONUMENT & 2640.00 TO S 1/4 COR SEC 25 MILTON TWP.

1962 BATTERMAN JR. VOL 4 PG 123 FOUND 1" PIPE & STATES CORNER IS 0.75 NORTH OF CENTER OF PVMT AND PLACED TIES.

1969 THOM PLAT OF SURVEY 2445.26 TO S 1/4 COR SEC 30

1982 BARNES V-1 FOUND 1" IRON PIPE, MONUMENT OF RECORD. SKETCH SHOWS COR. 0.5' NORTH OF CENTER OF STH 59 & ON LINE CENTER OF N/S PVMT. LIMA FIELD BOOK 1 PG 59 REFERENCED IN VOL 4 PG 123. COORDINATES 283,325.51; 2,296,352.39 ELEV 895'

1982 BARNES LIMA REMONUMENTATION FOUND 1" PIPE. CALLS FOR 2444.35 TO S 1/4 CORNER SEC 30, 2645.35 TO W 1/4 COR SECTION 31, 2648.51 TO W 1/4 CORNER SEC 30, 283,325.51; 2,296,352.39

1983 DOT R/W MAP FOUND IRON PIN; 283,327.04; 2,296,352.00; S1-14-51E 2644.18 (STATE PLANE) TO W 1/4 CORNER SECTION 31.

1983 WIDOT STH59 R/W PLANS PROJECT #3143-00-21 SHEET #4.8 CAST IRON MON 283,334.06; 2,291,061.64 3.15 PERPENDICULAR TO REF LINE AT STA 143+38.15 NO-21-52E

1983 BARNES MILTON TWP REMONUMENTATION 2642.90 TO S 1/4 CORNER SEC 25, 2643.30 TO E 1/4 COR SECTION 36, AND 2648.51 TO E 1/4 CORNER SECTION 25.

1985 DOT V-1(1) PLACED TIES AND STATES "1.92 _ TO REF. LINE (LT) 196+28.84. NOTE AT LOWER RT HAND CORNER-SECTION COR. REF.

1993 BARNES V-1(2) PLACED SMALL R/R SPIKE. CORNER RESTORED THROUGH ACCEPTANCE OF OBLITERATED EVIDENCE LOCATION. USED THE 1" PIPE REFERENCE MONUMENT TO THE NORTHEAST & THE BENT PIPE TO THE SE. THIS LOCATION IS IN HARMONY WITH DOT'S TIE TO THE NORTHWEST. INCLUDES A SKETCH PAGE OF WIDOT'S STATIONING & TWP PROJECT OBSERVATIONS.

Donald Barnes
5/15/02

SHEET 2 OF 6
V-25

MI613

IN FALL OF 2001 FD OLD & WIDOT TIES & SMALL R/R SPIKE 1.4' NORTH OF CENTER PVMT, 3 WEST OF EAST PVMT EDGE PROJECTED SOUTH ON LINE CENTER PVMT TO THE SOUTH. MON. WILL BE DESTROYED WITHIN A FEW MONTHS. IN APRIL 2002 FD TIES. USED TIES TO PLACE STEEL SURVEY SPIKE WITH THE FOLLOWING CAPTION ON TOP "SURVEY MARK".

C) Was the corner restored through acceptance of (1) an obliterated evidence location, or, (2) a found perpetuated location?

ACCEPTED FD PERPETUATED LOCATION OF THE R/R SPIKE AS PLACED BEFORE.

D) Describe any material discrepancy between the location of the corner as restored or reestablished and the location of that corner as previously restored or reestablished by distance and direction. Show the discrepancy on the plan view drawing under (a), above. Show the distances between the corner as previously restored or reestablished and (1) the corner as restored or reestablished, and (2) to at least 4 of the witness monuments shown on the drawing in (a), above.

PREVIOUS TIES SHEET SHOWS A DISCREPANCY BETWEEN A R/R SPIKE AND A FD PK. DISTANCES TO ERRONEOUS PK ARE SHOWN.

(E) Was the corner reestablished through lost corner proportionate methods? If so, show the method, including the directions and distances to other public land survey corners used as evidence or used for proportioning the corner location.

NO

I, Donald Barnes, hereby certify that the corner location as identified by the corner code index was determined by me under my direction and control and that this U.S. Public Land Survey Monument Record is correct and complete to the best of my knowledge and belief.

Seal
Donald Barnes
5/15/02
Emboss

SHEET 3 OF 6

CORNER CODE

V-25

A.E. 7.08 REQUIREMENT

U.S. PUBLIC LAND SURVEY MONUMENT RECORD

For Public Land Survey Corners In:

WI ADMINISTRATIVE CODE A-E 7.08 REQUIREMENT

T. 4 N. R. 13 E.

CORNER CODE INDEX

1	2	3	4	5	6	7	8	9	10	11	12	13	14	15	16	17	18	19	20	21	22	23	24	25	
A																									A
B	6					5				4				3				2						1	B
C																									C
D																									D
E																									E
F																									F
G	7					8				9				10				11						12	G
H																									H
J																									J
K	18					17				16				15				14						13	K
L																									L
M																									M
N																									N
O																									O
P	19					20				21				22				23						24	P
Q																									Q
R																									R
S																									S
T	30					29				28				27				26						25	T
U																									U
V																									V
W																									W
X	31					32				33				34				35						36	X
Y																									Y
Z																									Z

MILTON TWP

ROCK COUNTY WI

IF AVAILABLE
ROCK COUNTY COORDINATES PREFERRED

North _____ Elev. _____

East _____

Hor. Datum _____ Vert. Datum _____

LATITUDE _____ ELLIPS. HT. _____

LONGITUDE _____

GPS (X) _____ TRAVERSE (X) _____

BASED ON THE FOLLOWING CONTROL:

1 2 3 4 5 6 7 8 9 10 11 12 13 14 15 16 17 18 19 20 21 22 23 24 25
PLACE MONUMENT SYMBOL AT PROPER
LOCATION ON ABOVE INDEX

CORNER MONUMENT

WITNESS MONUMENT

BEARINGS ARE BASED ON: -----

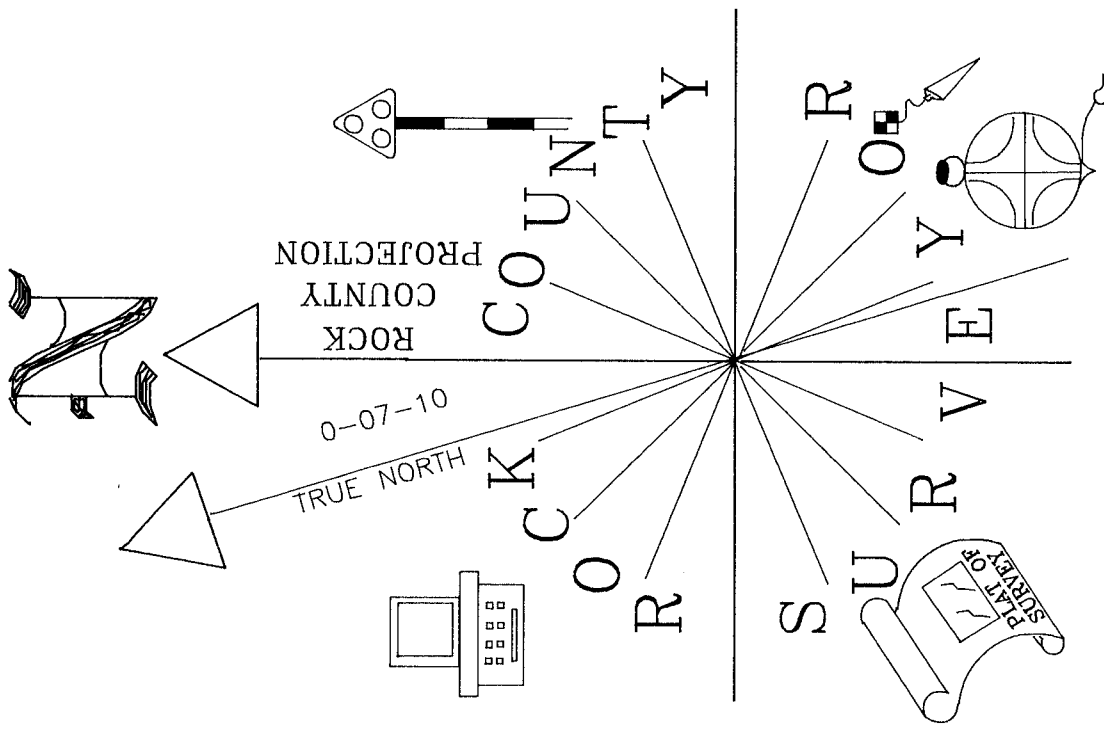
FIELD BOOK _____ PAGE # _____

SHEET 4 OF 6

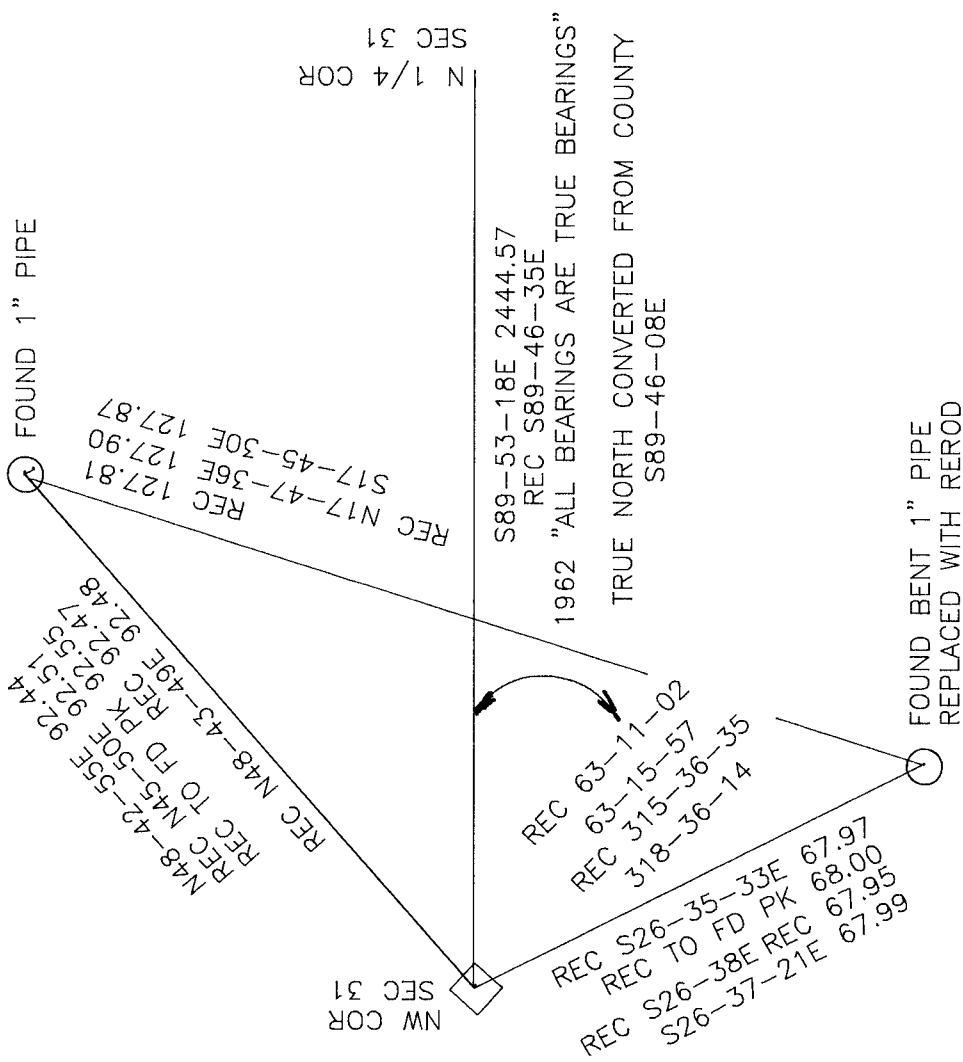
SHOW A PLAN VIEW DRAWING DEPICTING THE CORNER MONUMENT AND SURROUNDING PHYSICAL FEATURES, INCLUDING THE EXCAVATION AREA AND DEPTH.

PLANNING & ZONING COMMITTEE ADOPTED THE ABOVE FORM ON 12/2/1982

CORNER CODE V 25



NOT TO SCALE
OBSERVATION SHEET
ASSUMED ELEVATION DATUM

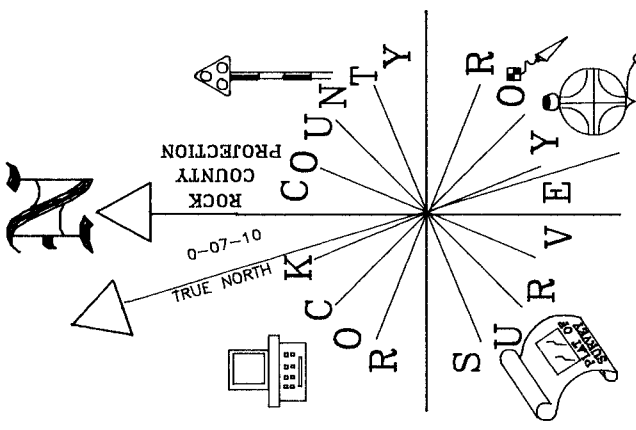


MAP 5 OF 6

Donald Barnes V-25

EMBOSSED SEAL

5/15/02



1983 BARNES S89-05-13E 2647.58
1869 BROWN 2-509 2645.78
1871 RUGER VAR 6-26 2642.97
1836 MULLETT 2638.02

NOT TO SCALE
OBSERVATION SHEET
ASSUMED ELEVATION DATUM

Donald Barnes
5/15/02

EMBOSSSED SEAL

V-25

MAP 6 OF 6

MILTON TWP
SEC 25

MILTON TWP
SEC 36

LIMA TWP
SEC 30

LIMA TWP
SEC 37

1836 BRINK 2640
1871 RUGER VAR 5-26 2640.16
1983 BARNES 50-07-03E 2643.89

1983 BARNES NO-42-52W 2648.51
1871 RUGER VAR 5-26 2645.28
1836 BRINK 2640

1962 BATTERMAN TRUE NORTH S88-46-35E
1983 BARNES N89-52-00W 2443.35
1871 RUGER 2-80 2437.87
1836 MULLETT 2434.08

1836 MULLETT 2637.36
1871 RUGER VAR 6-26 2640.82
1869 BROWN 2-509 2640.00
1983 BARNES S89-24-44E 2642.90
S89-26-05E 2643.06

1836 MULLETT 2640
1871 RUGER VAR 5-31 2640.00
1983 BARNES 50-34-58E 2640.00
50-36-37E 2645.30

1836 MULLETT 2640
1983 BARNES N89-39-27W 2656.36
S89-41-34E 2655.98

1983 BARNES 50-40-10E 2644.94
1871 RUGER VAR 5-29 2642.14
1836 MULLETT 2640