

Paper weight-110# (minimum)

Black nonfading ink required

U.S. PUBLIC LAND SURVEY MONUMENT RECORD

For Public Land Survey Corners In:

WI ADMINISTRATIVE CODE A-E 7.08 REQUIREMENT

T.4 N. R. 12 E. 4th P.M.

REV 10/23/2004

USMONREC.DWG

CORNER CODE INDEX

A	1	2	3	4	5	6	7	8	9	10	11	12	13	14	15	16	17	18	19	20	21	22	23	24	25	A
B			6				5				4				3			2				1				B
C																										C
D																										D
E																										E
F																										F
G																										G
H																										H
J																										J
K																										K
L																										L
M																										M
N																										N
O																										O
P																										P
Q																										Q
R																										R
S																										S
T																										T
U																										U
V																										V
W																										W
X																										X
Y																										Y
Z																										Z

FULTON TWP
ROCK COUNTY WI

IF AVAILABLE
ROCK COUNTY COORDINATES PREFERRED

North _____ Elev. _____

East _____

Hor. Datum _____ Vert. Datum _____

LATITUDE _____ ELLIPS. HT. _____

LONGITUDE _____

NAD83(91) _____ NETWORK ADJ. YR _____

GPS (X) _____ TRAVERSE (X) _____

BASED ON THE FOLLOWING CONTROL:

PLACE MONUMENT SYMBOL AT PROPER LOCATION ON ABOVE INDEX

CORNER MONUMENT WITNESS MONUMENT

BEARINGS ARE BASED ON: (a) _____

FIELD BOOK _____ PAGE # _____

SHEET 1 OF 4

SHOW A PLAN VIEW DRAWING DEPICTING THE CORNER MONUMENT AND SURROUNDING PHYSICAL FEATURES, INCLUDING THE EXCAVATION AREA AND DEPTH.

PLANNING & ZONING COMMITTEE ADOPTED THIS FORM ON 12/2/1982

CORNER CODE N-25

FU573^

(B) Describe any record evidence, monument evidence, occupational evidence, testimonial evidence or any other material evidence you considered, and whether the monument was found or placed.

1836 JULY BRINK NORTH EAST SIDE SECTION 24 T4N R12E 4TH
MERIDIAN

2341.02 BUR OAK 12 IN DIAMETER
2640 SET QUARTER SECTION POST BUR OAK 20 N86W
28.38' BUR OAK 10 S27W 73.92'
4928.88 BUR OAK 12 IN DIAMETER
5280 SET POST CORNER SECTIONS 13 & 24 BUR OAK 10
NBW 60.06' BLACK OAK 17 S33W 14.52' LAND
ROLLING SECOND RATE BUR WHITE & BLACK OAK
RED ROOT ROSIN WEED & C

1836 JULY BRINK NORTH ON EAST SIDE SECTION 13 T4N 12E TH
MERIDIAN

2640 SET QUARTER SECTION POST BUR OAK 10 S89W
29.04'
4270.2 BLACK OAK 16 IN DIAMETER
5280 SET POST CORNER SECTIONS 12 & 13 WHITE OAK
20 S46W 50.16' BUR OAK 11 N16W 48.18' LAND &
SAME

1836 (JULY 7) BURNHAM WEST RANDOM BETWN SEC 18 & 19 T4N
R13E

4977.72 INT. RANGE LINE 43.56' SOUTH BUR O 16 N22 1/2E
46.86' BUR O 10 S74E 54.78' FIRST RATE BUR OAK
OPENINGS

EAST CORRECTED BETW 19 & 18

2337.72 SET 1/4 SEC POST BUR OAK 8 N63E 25.08' BLACK
OAK 12 N21 1/2W 36.96'

?? BUR OAK 14 IN DI

4977.72 TO CORNERS
JULY 7 1836

1836 (JULY 10) BURNHAM EAST RANDOM BETWN SEC 13 & 24
T4N R12E

5313 INT. RANGE LINE 54.12' SOUTH FIRST RATE W. Y. &
BUR OAK OPENINGS

WEST CORRECTED BETWN 24 & 13

BUR OAK 12 IN DIA

2656.5 SET 1/4 SEC POST BUR OAK 10 S3 1/2E 19.8"? BUR
OAK 8 N37W 19.8"?

NO STATIONS

5313 TO CORNERS

JULY 10, 1836

1842 PIERCE TWP REC JANESVILLE BK 1 PG 11

A RD BEGINNING AT A POST SET

ON THE EAST BANK OF ROCK RIVER & ON THE SECTION LINE

BETWEEN 16 & 21 IN T4N R12E FROM SAID PLACE OF

BEGINNING RUN SOUTH 25-45E 591.36'; THENCE SOUTH 45

EAST 12,463.44'; THENCE SOUTH 25-15 EAST 2944.92';

THENCE SOUTH 57-45 EAST 1741.08'; THENCE SOUTH 41-45

EAST 4389'; THENCE SOUTH 7-45 EAST 267.3' TO THE RD

THAT LEADS FROM MT. ZION TO HUMES FERRY MAKING

33,079.2'

NOV 14TH 1842 SURVEYED A RD BEGINNING AT THE RANGE

LINE AND AT THE COR OF SEC 24 & THE SOUTHEAST COR OF

13 IN T4N R12E FROM SAID CORNER ON THE SEC. LINE TO

THE QUARTER STAKE [N 1/4 COR SEC 24] S88-15W 2640';

THENCE N45-45W 1254'; THENCE N86-45W 1056'; THENCE

N59-45W 759'; THENCE N89-45W 2277'; THENCE S69-15W

1089'; THENCE N82-45W 462'; THENCE N68-15W 1023';

THENCE S86-30W 594'; THENCE S53-15W 1023'; THENCE

S30-15W 554.40'; THENCE S53-15W 1023'; THENCE S30-15W

554.40'; THENCE S89-45W 5748.6' ON; THENCE N79-45W

990' ON THE SECTION LINE THENCE; S74-45W 999.9' TO THE

PLACE DESCRIBED AS THE PLACE OF BEGINNING FOR THE

ABOVE DESCRIBED ROAD MAKING 20,469.9'.

PAGE 1 OF 4

Ronald Barnes

11/17/07

N-25

FU573

1871 (AUG22) RUGER MILTON TWP REMON. NORTH ON WEST LINE
OF SW ¼ OF SEC 19 ON A VAR 6-05 AT

2670.36 INTERSECTED ¼ LINE 3.3' WEST OF ¼ COR.
FOUND STAKE AT COR. ALSO FOUND STUMPS
OF BEARING TREES COR VAR 6-01
NORTH ON WEST LINE OF N.W. ¼ OF SEC 19
ON A VAR 6-00 AT

2675.64 INTERSECTED NORTH BOUNDARY LINE 4.62'
EAST OF COR. FOUND OLD STAKE AT COR.
ALSO FOUND STUMPS OF BEARING TREES.
COR VAR 6-06

1871 (AUG23) RUGER MILTON TWP REMON. NORTH ON WEST LINE
OF SW ¼ OF SEC 18 ON A VAR 6-20 AT

2650.56 INTERSECTED ¼ LINE 6.60' WEST OF ¼ COR.
FOUND OLD STAKE AT COR. ALSO FOUND
STUMP OF S.W.; BEARING TREE & WHERE
STUMP OF N.W. BEARING TREE HAD BEEN DUG
UP. COR VAR 6-11

EAST ON NORTH LINE OF NW ¼ OF SEC 19 ON
A VAR 4-30 OFFSET NORTH 13.20' AT

2352.08 INTERSECTED ¼ LINE 9.90' NORTH OF ¼ COR
FOUND SMALL BURR OAK TREE NEAR COR. IT
HAVING BEEN LEFT TO MARK THE COR. ALSO
FOUND STUMPS OF BOTH BEARING TREES COR
VAR 4-34

EAST ON NORTH LINE OF NE ¼ OF SEC 19
ON A VAR 4-30 OFFSET NORTH 3.30' AT

2653.20 INTERSECTED EAST BOUNDARY LINE 13.20'
NORTH OF COR. FOUND OLD STAKE AT COR.
ALSO STUMPS OF S.W. & N.S. BEARING TREES.
COR VAR 4-17

1871 (SEP8) RUGER MILTON TWP REMON. NORTH ON WEST LINE OF
NW ¼ OF SEC 18 ON A VAR 6-05 OFFSET
WEST 19.80' OFFSET EAST 19.8' AT

2609.64 INTERSECTED NORTH BOUNDARY LINE 3.30'
EAST OF COR. COR VAR 6-09

WEST ON NORTH LINE OF NE ¼ OF SEC 18
ON A VAR 4-25 OFFSET NORTH 9.90'
OFFSET SOUTH 19.80' AT

2647.26 INTERSECTED ¼ LINE 16.50' SOUTH OF ¼
COR. FOUND OLD STAKE AT COR. ALSO FOUND
STUMP OF BEARING TREE COR. VAR 4-17

WEST ON NORTH LINE OF NW ¼ OF SEC 18
ON A VAR 4-20 OFFSET SOUTH 13.20' AT

2401.08 INTERSECTED WEST BOUNDARY LINE 19.80'
SOUTH OF COR. FOUND OLD STAKE AT COR.
ALSO FOUND NE & NW & SW BEARING TREES &
STUMP OF SE BEARING TREE. COR VAR 4-11
PLACED 6"X6" CUT LIMESTONE

1896 BROWN VOL 2 PG 501 CALLS FOR MON. BUT STATES
NOTHING ABOUT IT. 2675.64 TO E ¼ COR SEC 24

1960 ELY #1268,1269,3589,6549 STATES NOTHING ABOUT MON.
IN LOT A ON NORTH SIDE OF PRIVATE RD.

1963 DOT #13510&13511 I-90 NOTE: BEARING SHOWN ON PLAT
ARE THE AVERAGE TRUE BEARINGS OF EACH TANGENT TO THE
NEAREST MINUTE. NOTHING WAS STATE ABOUT THE TYPE OF
MON. FD. 1480' SO-44W FROM CENTER INT. OF I-90 &
NEWVILLE RD.

1964 WEIR #1289,1298,3623,6395,6830,6831,6832,6833
STATES NOTHING ABOUT TYPE OF MON.

1974 LEE VOL 5 PG 23 FD NO EVIDENCE OF SET COR AT
PROPORTIONATE DISTANCE. SET 5/8" PIN & REF. SAME. WEST
OF CENTER OF PVMT OF NEWVILLE RD. ON LINE WITH E/W
FENCE ON WEST SIDE OF RD.

SHEET 2 OF 4
CORNER CODE N-25

11/12/07
Small Bases

FU573

- 1974 LEE VOL 5 PG 41 DUG & FD NOTHING VOL 5 PG 23.
1974 SCHOREDER CSM VOL 4 PG 224 STATES NOTHING ABOUT MON.
1975 NORTHRUP #1202 FD 2" PIPE
1988 SCHROEDER CSM VOL 13 PG 374 STATES NOTHING ABOUT MON. SOUTH 147.58 TO NE COR OF LOT. ANGLE 88-28-20 @ NE COR COR SEC 24 FROM E 1/4 COR SEC 24 TO N 1/4 COR SEC 24.
1983 BARNES REMON #6794 NO-16-45E 2653.07 TO E 1/4 COR SEC 13, SO-16-49W 2678.10 TO E 1/4 SEC 24, SB6-55-03E 2353.28 TO S 1/4 COR SEC 18 MILTON TWP FIELD NOTES CALL FOR ALUM MON AT SE COR SEC 13.
1989 SCHROEDER #12408 CALLS FOR COR BUT STATES NOTHING ABOUT IT. ANGLE 91-37-40 @ SE COR FROM S 1/4 COR TO E 1/4 COR SEC 13. 2672.10 TO S 1/4 COR SEC 13
1990 SCHOREDER CSM VOL 14 PG 276 & 404 STATES NOTHING ABOUT MON.
1998 COMBS CSM VOL 21 PG 311 ALUM. MON. 2653.06 TO E 1/4 COR SEC 13
1999 KREBS #7355 FD PIN 2653.11 TO E 1/4 COR SEC 13
2001 COMBS #14254 FD IRON PIN 2678.19 TO E 1/4 COR SEC 24

FD PIN & REFERENCE PINS

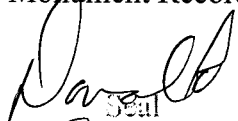

C) Was the corner restored through acceptance of (1) an obliterated evidence location, or, (2) a found perpetuated location?

ACCEPTED FD PIN.

D) Describe any material discrepancy between the location of the corner as restored or reestablished and the location of that corner as previously restored or reestablished by distance and direction. Show the discrepancy on the plan view drawing under (a), above. Show the distances between the corner as previously restored or reestablished and (1) the corner as restored or reestablished, and (2) to at least 4 of the witness monuments shown on the drawing in (a), above.

(E) Was the corner reestablished through lost corner proportionate methods? If so, show the method, including the directions and distances to other public land survey corners used as evidence or used for proportioning the corner location.

I, **Donald Barnes**, hereby certify that the corner location as identified by the corner code index was determined by me under my direction and control and that this U.S. Public Land Survey Monument Record is correct and complete to the best of my knowledge and belief.


Seal

Emboss

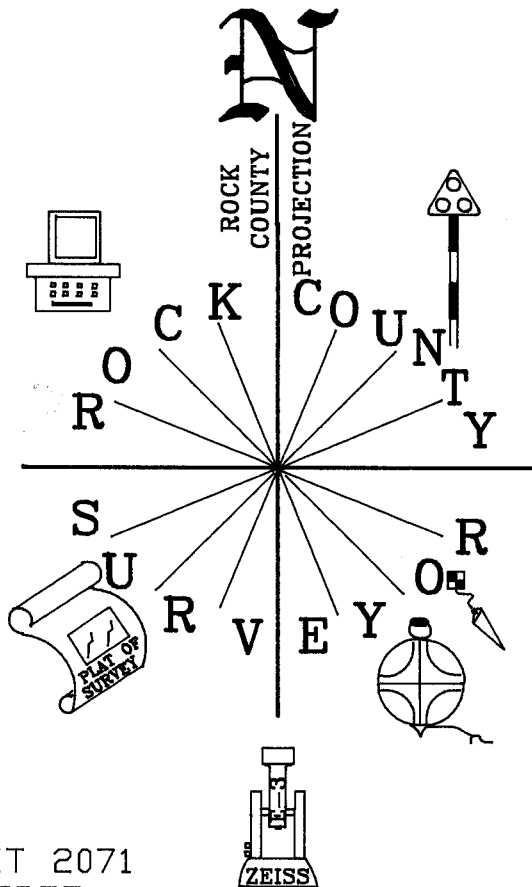
11/12/07

SHEET 3 OF 4

CORNER CODE **N-25**

A.E. 7.08 REQUIREMENT

NE COR
SEC 24
FULTON TWP
T4N R12E

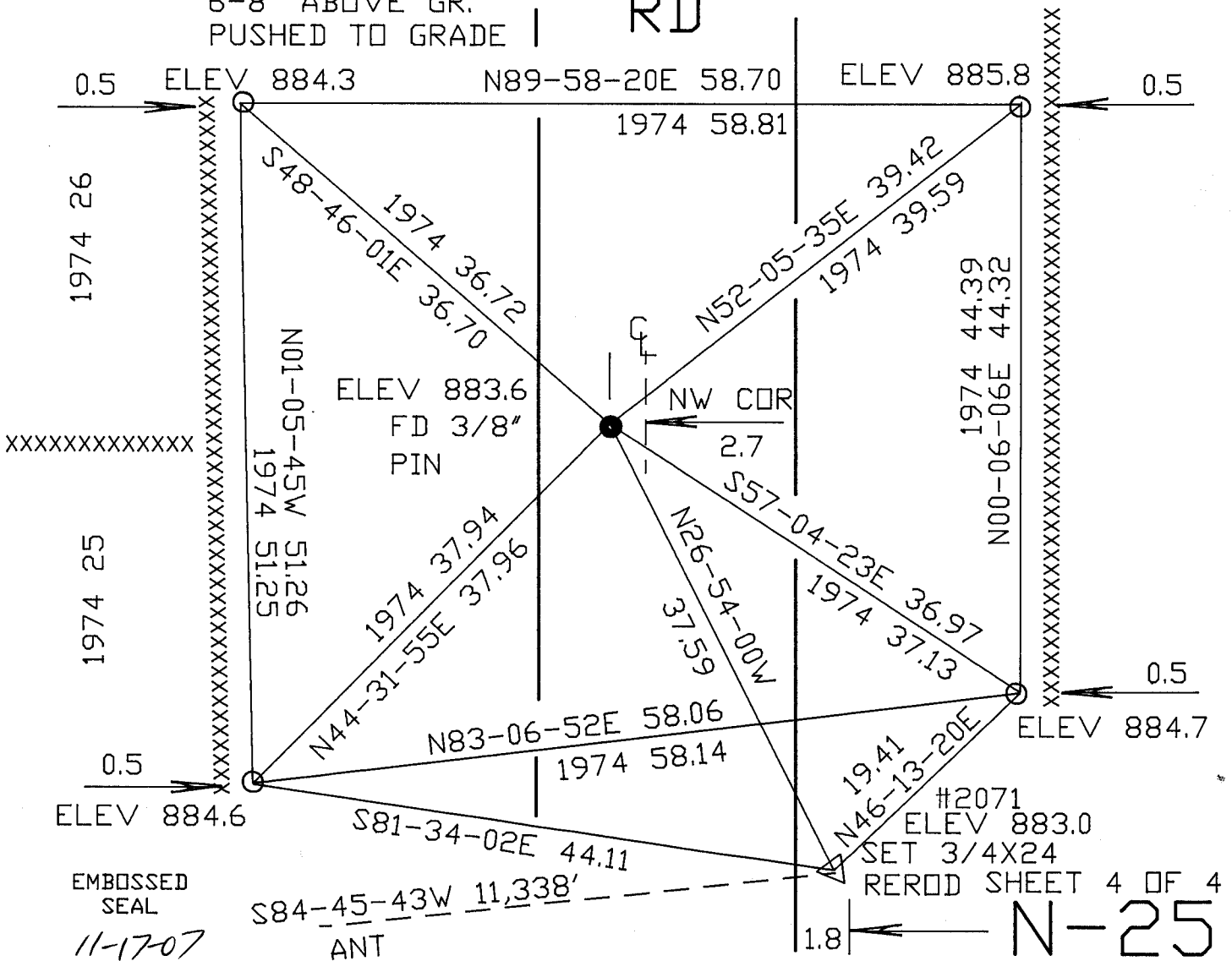


OBSERVATION SHEET 2071
ELEV. BASED ON WIDOT
PHOTO CP #V141

NOT TO SCALE

NEWVILLE RD

○ FD 3/4" PIPE
6-8" ABOVE GR.
PUSHED TO GRADE



EMBOSSED SEAL

11-17-07

David Banes

#2071
ELEV 883.0
SET 3/4X24
REROD SHEET 4 OF 4

N-25