

U.S. PUBLIC LAND SURVEY MONUMENT RECORD

For Public Land Survey Corners in:

WI ADMINISTRATIVE CODE A-E 7.08 REQUIREMENT

T. 4 N., R. 12 E

CORNER CODE INDEX

A	1	2	3	4	5	6	7	8	9	10	11	12	13	14	15	16	17	18	19	20	21	22	23	24	25
B																									
C	6						5					4				3									1
D																									
E																									
F																									
G	7						8					9				10									12
H																									
J																									
K																									
L	18						17					16				15									13
M																									
N																									
O																									
P	19						20					21				22									24
Q																									
R																									
S																									
T	30						29					28				27									25
U																									
V																									
W																									
X	31						32					33				34									30
Y																									
Z																									

FULTON TWP

ROCK COUNTY WI

IF AVAILABLE
ROCK COUNTY COORDINATES PREFERRED

North 307,950.60 Elev. _____

East 495,760.24

Hor. Datum _____ Vert. Datum _____

LATITUDE _____ ELLIPS. HT. _____

LONGITUDE _____

GPS (X) _____ TRAVERSE (X) _____

BASED ON THE FOLLOWING CONTROL:

PLACE MONUMENT SYMBOL AT PROPER LOCATION ON ABOVE INDEX

CORNER MONUMENT

WITNESS MONUMENT

(a)

BEARINGS ARE BASED ON:

OBSERVATION SHEET

FIELD BOOK _____ PAGE # _____

SHEET 1 OF 3

SHOW A PLAN VIEW DRAWING DEPICTING THE CORNER MONUMENT AND SURROUNDING PHYSICAL FEATURES, INCLUDING THE EXCAVATION AREA AND DEPTH.

PLANNING & ZONING COMMITTEE ADOPTED THE ABOVE FORM ON 12/2/1982

CORNER CODE R-25

Hi 581 *FV 593*

(B) Describe any record evidence, monument evidence, occupational evidence, testimonial evidence or any other material evidence you considered, and whether the monument was found or placed.

- 1835 BRINK *NORTH EAST SIDE SECTION 25*
1417.02 BUR OAK 12 IN DIAMETER
2640 SET QUARTER SECTION POST WHITE OAK 16 S6W 77.88'
WHITE OAK 18 N54W 140.58'
5280 SET POST CORNER SECTIONS 24 & 25 BUR OAK 12 N21W 20.46', BUR
OAK 11 S33 1/2 W 21.12' LAND & SAME
NORTH EAST SIDE SECTION 24
2341.02 BUR OAK 12 IN DIAMETER
2640 SET QUARTER SECTION POST
- 1836 BURNHAM *EAST RANDOM BETW SECS 24 & 25*
5273.4 INT. RANGE LINE AT STAKE. WEST HALF BROKEN, EAST 1/2 FIRST
RATE BUR OAK OPENING GENTLY ROLLING
WEST MARKED LINE BETWE. 25 & 24
NO STATIONS
2636.7 SET 1/4 SEC POST BUR OAK 16 N52 1/2 E 89.1' NO OTHER BEARING
5273.4 TO CORNER
- 1836 BURNHAM *WEST RANDOM BETWEEN SEC 19 & 30*
2970 ENTER DRY PRAIRIE
3630 LEAVE SAME
4956.6 INT. RANGE LINE 6.6' SOUTH BUR OAK 12 N6W 8.58'; BUR OAK 10 S11E
42.24' GOOD SECOND RATE BUR OAK OPENING & DRY PRAIRIE
EAST CORRECTED BETW. 30 & 19
2316.6 SET 1/4 SEC POST. BUR OAK 12 S45E 16.5', BUR OAK 12 N78E 9.24'
4956.6 TO CORNER.
- 1864 LOCKE VOL 1 PG 220 FOUND S.B. TREE & (HOLE) OF N.B.T. & OLD STAKE.
DISTANCES TO S.B.T 27.72' INSTEAD OF 21.12'. SET BUR OAK STAKE IN OLD
HOLE WITH LIMESTONE 14X10X3 ON NORTH. VAR 8-18 2634.72 TO N 1/4 COR
SEC 25 FULTON TWP & 2648.58 TO W 1/4 COR SEC 30 MILTON TWP.
- 1871 RUGER REMONUMENTATION NOTES.
WEST ON NORTH LINE OF NE 1/4 OF SEC 30 ON A VAR 3-54 (PG 280)
2653.2 INTERSECTED 1/4 LINE 1.32' SOUTH OF 1/4 COR. FD STAKE
SURROUNDED BY STONES AT COR. ALSO FD S.E.B.T. & WHERE STUMP
OF N.E. B.T. HAD BEEN DUG UP CORRECTED VAR 3-52
WEST ON NORTH LINE OF NW 1/4 OF SEC 30 ON A VAR 3-22 (PG 280)
2321.88 INTERSECTED WEST BOUNDARY LINE 7.92' SOUTH OF COR. FOUND
STAKE & STONES AT COR. ALSO FD SW BT & WHERE STUMPS OF
OTHER BEARING TREES HAD BEEN DUG UP. CORRECTED VAR 3-12
SOUTH ON WEST LINE OF NW 1/4 OF SEC 30 ON A VAR 6-55
2657.16 INTERSECTED 1/4 LINE AT 1/4 COR FD LIMESTONE AT COR ALSO FD
STUMPS OF BOTH B.T.S.
NORTH ON WEST LINE OF SW 1/4 OF SEC 19 ON A VAR 6-05
2670.36 INTERSECTED 1/4 LINE 3.3' WEST OF 1/4 COR. FD STAKE AT COR ALSO
FD STUMP OF B.T.S CORRECTED VAR 6-01
- 1938 SUNNY VOL 3 PG 394 FD STONE MON. 23" DEEP. 9-12 1940 SET A 1/2 X 18"
CAPPED PIPE ON TOP FOR COR. REFERENCED SAME. 2322.1 TO N 1/4 COR
SEC 30.
- 1961 BATTERMAN VOL 4 PG 84 SET SPIKE AT NW COR OF SEC 30 ACCORDING TO
OLD REF. TIES. REFERENCED SAME. 69.2' TO SE COR OF OAKDALE
SCHOOL. NOTE: REF IN VOL 4 PG 413. 2323.82 TO N 1/4 COR SEC 30.
- 1969 BATTERMAN JR. VOL 4 PG 413 NE COR SEC 25, FULTON TWP REFERENCED
SAME. 65.63' TO PIPE @ SE COR HOUSE.
- 1969 BECKER VOL 5 PG 515 THESE CORNER TIES WERE FD IN COUNTY CLERK'S
VALUT. WORK DONE BY GILBERT BECKER, PROJECT ENG. ON DEC 8. 1969
PROJ. #S0456-1-70,71. REFERENCE MONUMENTS ARE BRASS DISKS IN
CONCRETE.
- 1983 BARNES TWP PROJECT. FD MON. BOX. S87-16-29E 2323.65 TO N 1/4 COR SEC 30,
S0-11-44W 2658.16 TO W 1/4 COR SEC 30, & N0-35-41E 2672.06 TO W 1/4 COR SEC 19.

FOUND PK AND 889-22-15E 0.15' A PIPE IN MON. BOX 6" DEEP. ALSO FOUND 2 DOT BRASS DISKS IN CONCRETE AND RECORD REFERENCE PIPE. 889-00-34W 2644.12' TO N 1/2 COR SEC 25 FULTON TWP. ESTABLISHED COUNTY COORDINATES FROM WFL GPS STATION 6.

(C) Was the corner restored through acceptance of (1) an obliterated evidence location, or, (2) a found perpetuated location?

ACCEPTED FOUND PIPE THAT IS IN HARMONY WITH THE REFERENCE BRASS DISKS. THE DIFFERENCE OF 2.92' TO THE SW REFERENCE PIPE MAY BE A DRAFTING BLUNDER.

D) Describe any material discrepancy between the location of the corner as restored or reestablished and the location of that corner as previously restored or reestablished by distance and direction. Show the discrepancy on the plan view drawing under (a), above. Show the distances between the corner as previously restored or reestablished and (1) the corner as restored or reestablished, and (2) to at least 4 of the witness monuments shown on the drawing in (a), above. FOUND PK THAT DIFFERS FROM THE FOUND PIPE IN MONUMENT BOX IS SHOWN IN SKETCH.

(E) Was the corner reestablished through lost corner proportionate methods? If so, show the method, including the directions and distances to other public land survey corners used as evidence or used for proportioning the corner location.

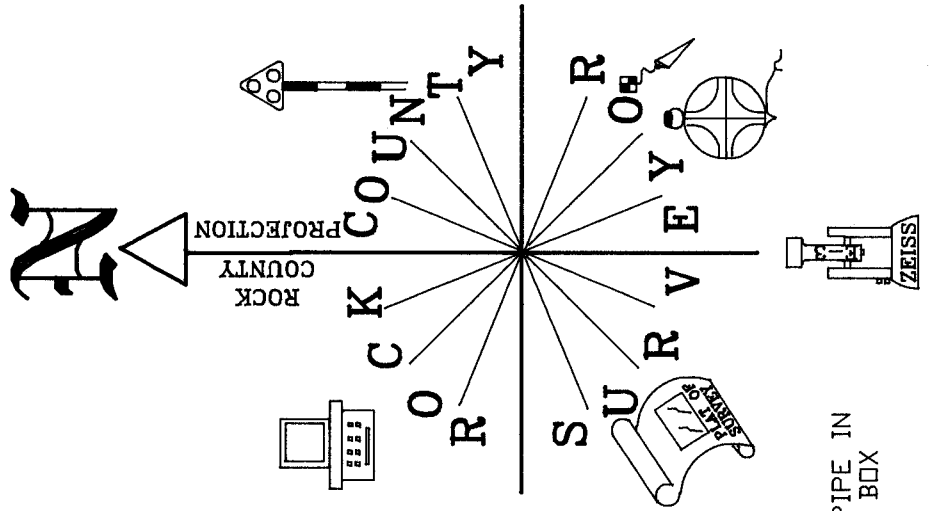
I, Donald Barnes, hereby certify that the corner location as identified by the corner code index was determined by me under my direction and control and that this U.S. Public Land Survey Monument Record is correct and complete to the best of my knowledge and belief.

seal

Donald Barnes
Clibbess
11/04/99

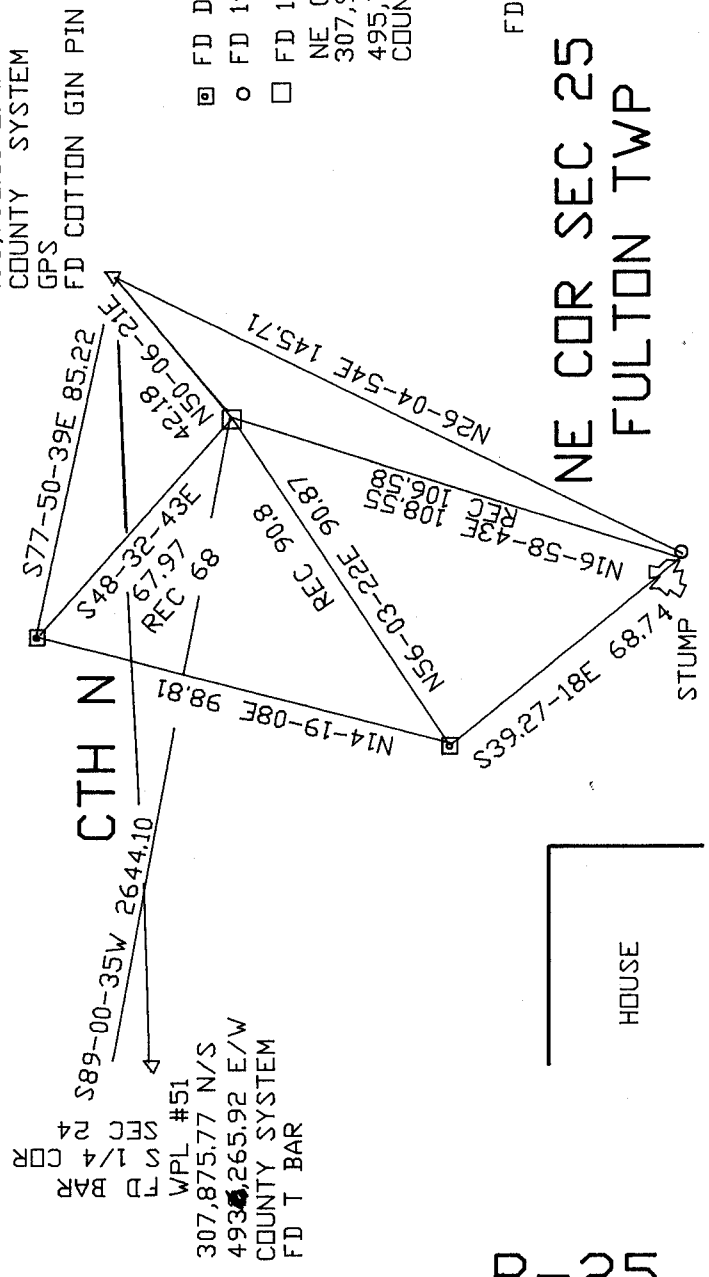
Number of included sheets 2

CORNER CODE R-25



NEWVILLE RD

HOUSE



NE COR SEC 25
FULTON TWP

R-25

EMBOSSSED SEAL
Donald Barnes
 12/04/99