

U.S. PUBLIC LAND SURVEY MONUMENT RECORD

For Public Land Survey Corners In:

WI ADMINISTRATIVE CODE A-E 7.08 REQUIREMENT

T. A N. R. 12 E. 4th P.M.

REV 10/23/2004

USMONREC.DWG

CORNER CODE INDEX

FULTON TWP
ROCK COUNTY WI

IF AVAILABLE
ROCK COUNTY COORDINATES PREFERRED

A	1	2	3	4	5	6	7	8	9	10	11	12	13	14	15	16	17	18	19	20	21	22	23	24	25	A
B		6																								B
C			5																							C
D				4																						D
E					3																					E
F						2																				F
G							1																			G
H																										H
I																										I
J																										J
K																										K
L																										L
M																										M
N																										N
O																										O
P																										P
Q																										Q
R																										R
S																										S
T																										T
U																										U
V																										V
W																										W
X																										X
Y																										Y
Z																										Z

North _____ Elev. _____

East _____

Hor. Datum _____ Vert. Datum _____

LATITUDE _____ ELLIPS. HT. _____

LONGITUDE _____

NAD83(91) _____ NETWORK ADJ. YR _____

GPS (X) _____ TRAVERSE (X) _____

BASED ON THE FOLLOWING CONTROL:

PLACE MONUMENT SYMBOL AT PROPER LOCATION ON ABOVE INDEX

CORNER MONUMENT

WITNESS MONUMENT

BEARINGS ARE BASED ON: -----

FIELD BOOK _____ PAGE # _____

SHEET 1 OF 3

SHOW A PLAN VIEW DRAWING DEPICTING THE CORNER MONUMENT AND SURROUNDING PHYSICAL FEATURES, INCLUDING THE EXCAVATION AREA AND DEPTH.

PLANNING & ZONING COMMITTEE ADOPTED THIS FORM ON 12/2/1982

CORNER CODE G-25

FU540^

(B) Describe any record evidence, monument evidence, occupational evidence, testimonial evidence or any other material evidence you considered, and whether the monument was found or placed.

1833 OCT MULLETT & BRINK SOUTH ON EAST SIDE SECTION 12
4N R12

627 ROCK RIVER 396' @ SW SET POST ON RIGHT BANK
WHITE OAK 10 N18 1/2W 102.3' BLACK OAK 10 N56E
129.36' LAND & SAME AS LAST MILE
OCT 17TH 1833

1836 JULY BRINK NORTH EAST SIDE SECTION 12 4N 12E

1358.28 BLACK OAK 18 IN DIAMETER

2640 SET QUARTER SECTION POST BUR OAK 30 S22W
87.78' WHITE OAK 7 N37W 60.06'

3102 ARMY TRAIL @ NE

3747.48 INTERSECT LEFT BANK OF ROCK RIVER SET POST
BUR OAK 16 S3W 505.56' BUR OAK 18 S17E 600.6'
LAND & C SAME RIVER 907.5' WIDE RUNNING
SOUTH WEST

1871 (SEP11) RUGER MILTON TWP REMON.

NORTH ON WEST LINE OF SW 1/4 OF SEC 7 ON A
VAR 6-05 OFFSET WEST 6.60' OFFSET WEST
6.60' OFFSET EAST 9.90' AT

2638.35 INTERSECTED 1/4 LINE 3.30' EAST OF 1/4 COR FOUND
STUB OF SW BEARING TREE ALSO FOUND WHERE
STUMP OF NW BEARING TREE HAD BEEN DUG UP.
ESTABLISHED 1/4 COR. FROM THEM. COR VAR 6-13
NORTH ON WEST LINE OF NW 1/4 OF SEC 7 ON A VAR
6-05 AT

1104.84 INTERSECTED MEANDER LINE 9.90' EAST OF COR.
FOUND STUMPS OF BOTH BEARING TREES &
ESTABLISHED MEANDER COR. FROM THEM. COR
VAR 6-35

AT MEANDER COR. ON NORTH BANK OF ROCK
RIVER. WEST LINE OF SEC 7 FOUND OLD STAKE AT
COR. ALSO FOUND NW BEARING TREE & STUMP OF
NE BEARING TREE. NORTH ON WEST LINE OF NW 1/4
OF SEC 7 ON A VAR 6-30 OFFSET EAST 10.56' AT

630.96 INTERSECTED NORTH BOUNDARY LINE 11.88' EAST OF
COR. FOUND OLD STAKE AT COR. ALSO FOUND
STUMP OF N.W. BEARING TREE & WHERE STUMP OF
S.E. BEARING TREE HAD BEEN DUG UP. COR VAR 6-
37

HE PLACED 6"X6" CUT LIMESTONE.

1911 KERCH VOL 3 PG 65 MON SET GAS PIPE 457.4 TO THE
EAST, 2641.1 TO SE COR SEC 12, 1106.9 NORTH TO MP
ON SOUTH SIDE OF ROCK RIVER. ANGLE FROM MP TO SE
COR SEC 12 180-24, ANGLE FROM GAS PIPE TO SE COR
SEC 12 90-12

1934 DOT #3901 STATES NOTHING ABOUT MON. SHOWS COR
IS ALSO P.I. AND ANGLE 88-45 FROM THE WEST TO THE
NORTH

1966 DOT #17450, 17451, & 17452 STATED NOTHING ABOUT
MON. FROM PROPOSED CENTER OF STH 59 IT SHOWS E 1/4
COR SEC 12 IS 471.3' SOUTH

1974 COMBS CSM VOL 4 PG 201 STATES NOTHING ABOUT
MON.

1975 COMBS #1182 STATES NOTHING ABOUT MON. 2641.73
TO SE COR SEC 12, 1328.45 TO N 1/16TH COR OF SE 1/4 OF
SEC 12, & ANGLE 88-48-18 @ E 1/4 COR SEC 12 FROM SE
COR SEC 12 TO E/W 1/4 LINE SEC 12.

1980 NORTHRUP CSM VOL 9 PG 234 CUT L.S. NORTH 991.89
TO 1X30 REBAR SET AS WITNESS TO COMPUTED LOCATION
SET BY RUGER DURING RESUREY OF MILTON TWP.

1980 NORTHRUP #1108 FD CUT LIMESTONE MON. NO-06-44W
652.85 TO PIPE WHICH IS 429 SOUTH OF ROCK RIVER
BANK

PAGE 1 OF 3

CORNER CODE G-25

Dodd Barnes

1-04/07

FU540

- 1980 COMBS #6547 CUT STONE. 2641.73 TO SE COR SEC 12,
1338.48 TO N 1/16TH COR OF SE 1/4 OF SEC 12, ANGLE 88-
48-25 @ E 1/4 COR SEC 12 FROM SE COR SEC 12 TO E/W 1/4
LINE SEC 12
- 1983 BARNES REMON #6794 SO-17-46W 2642.07 TO SE COR SEC
12
- 1983 BARNES G-1 REFERENCE TIES IN MILTON TWP. FD CUT LS 2.5'
ABOVE GROUND. STONE IS SUPPORTED BY METAL SIGN
POST. SET CARSONITE.
- 1988 DOT #15032 & 11168 CUT STONE 302,529.19; E/W
2,264,748.01 N2-18-42W 2642.91 TO NE COR SEC 12
- 1990 COMBS CSM VOL 15 PG 68 LIMESTONE. NORTH 991.89
TO MC
- 1995 LATHROP CSM VOL 18 PG 359 CUT STONE 2641.73 TO
SE COR SEC 12
- 1996 WEIR G-1 A SQUARE CUT LIMESTONE MON. WAS FOUND AND
CHECKED WITH FOUR BOX-TOPPED IRON BOLTS. FOUND
USING A PREVIOUS TIE SHEET. THE MON. WAS DETERMINED
TO BE THE WEST 1/4 CORNER OF SECTION 7 MILTON.

FD CUT LIMESTONE WITH CARSONITE ON WEST SIDE OF STONE &
METAL POST AT SE CORNER OF LS. THE LS IS IN THE BOTTOM OF A
STEEP RAVINE WATER WAY. I OCCUPIED BOTH THE CUT LS AND THE
REROD THAT IS NO-13-21E 30.58 OF THE STONE. AT THOSE POINTS
I MEASURED ANGLES AND DISTANCES TO THE REFERENCE
MONUMENTS.

C) Was the corner restored through acceptance of (1) an obliterated evidence location, or, (2) a found perpetuated location?

ACCEPTED CUT LIMESTONE.

D) Describe any material discrepancy between the location of the corner as restored or reestablished and the location of that corner as previously restored or reestablished by distance and direction. Show the discrepancy on the plan view drawing under (a), above. Show the distances between the corner as previously restored or reestablished and (1) the corner as restored or reestablished, and (2) to at least 4 of the witness monuments shown on the drawing in (a), above.

NONE

(E) Was the corner reestablished through lost corner proportionate methods? If so, show the method, including the directions and distances to other public land survey corners used as evidence or used for proportioning the corner location.

NO

I, **Donald Barnes**, hereby certify that the corner location as identified by the corner code index was determined by me under my direction and control and that this U.S. Public Land Survey Monument Record is correct and complete to the best of my knowledge and belief.

Seal

SHEET 2 OF 3

Emboss

Donald Barnes
1/04/07

CORNER CODE
A.E. 7.08 REQUIREMENT

G-25

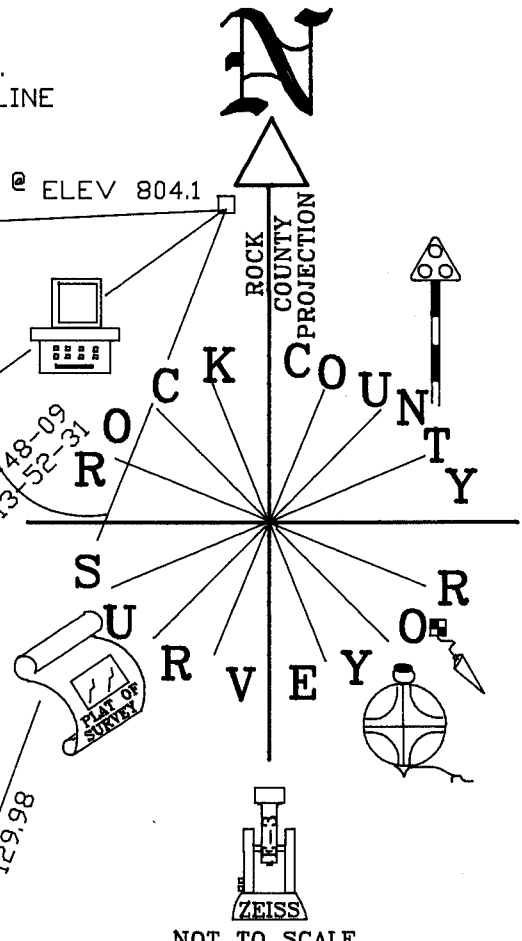
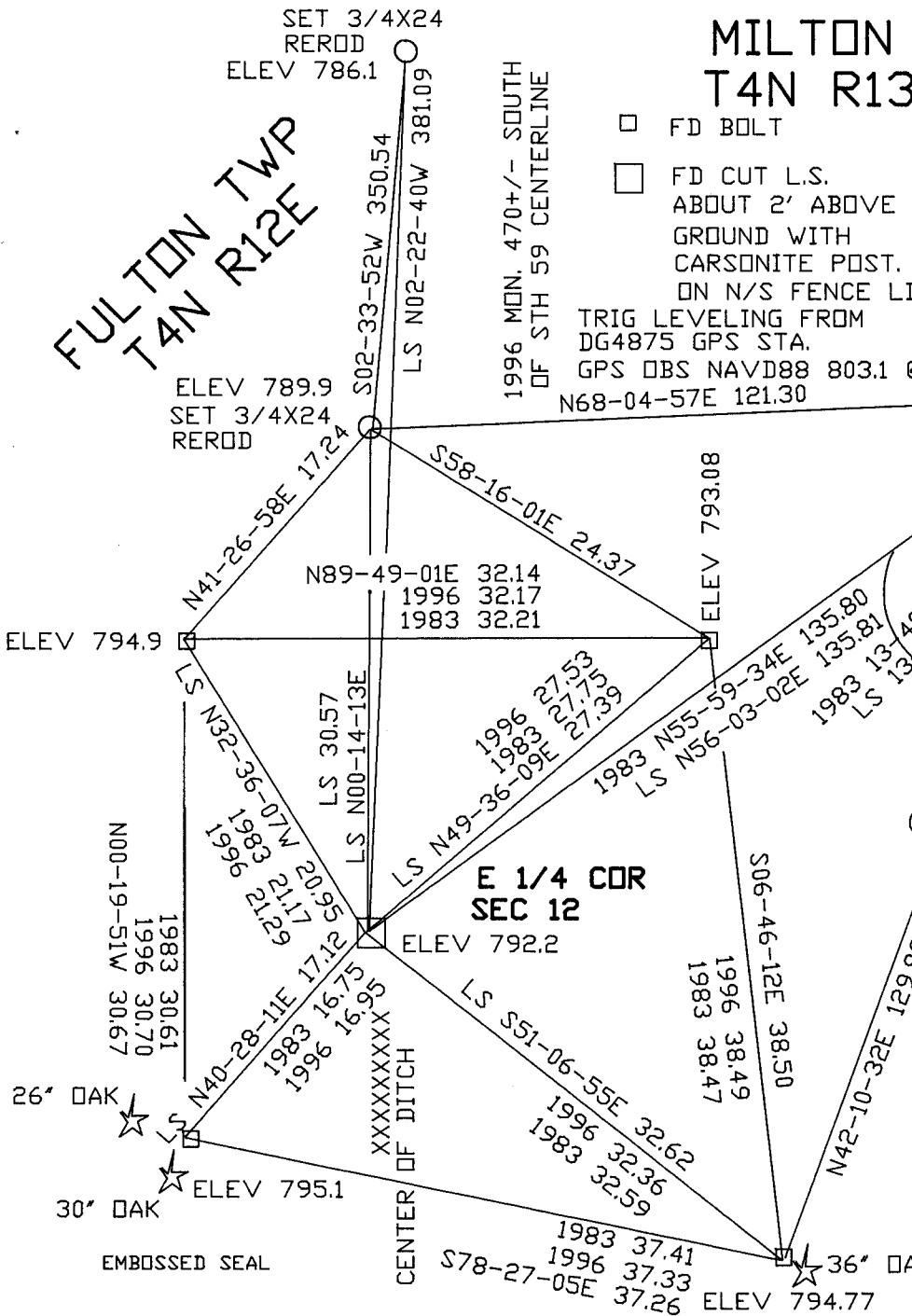
STH 59

FULTON TWP
T4N R12E

MILTON TWP
T4N R13E

- FD BOLT
- FD CUT L.S.
ABOUT 2' ABOVE
GROUND WITH
CARSONITE POST.
ON N/S FENCE LINE

TRIG LEVELING FROM
DG4875 GPS STA.
GPS OBS NAVD88 803.1 @ ELEV 804.1
N68-04-57E 121.30



MILTON TWP FB #2 PG 33
OBSERVATIONS SHEET 976*

SHEET 3 OF 3

G-25

Donald Baines
12-15-2006