

Paper weight-110# (minimum)

Black nonfading ink required

U.S. PUBLIC LAND SURVEY MONUMENT RECORD

For Public Land Survey Corners In:

WI ADMINISTRATIVE CODE A-E 7.08 REQUIREMENT

T. 4 N. R. 12 E. 4th P.M.

REV 10/23/2004

USMONREC.DWG

CORNER CODE INDEX

FULTON TWP

ROCK COUNTY WI

IF AVAILABLE
ROCK COUNTY COORDINATES PREFERRED

North _____ Elev. _____

East _____

Hor. Datum _____ Vert. Datum _____

LATITUDE _____ ELLIPS. HT. _____

LONGITUDE _____

NAD83(91) _____ NETWORK ADJ. YR _____

GPS (X) _____ TRAVERSE (X) _____

BASED ON THE FOLLOWING CONTROL:

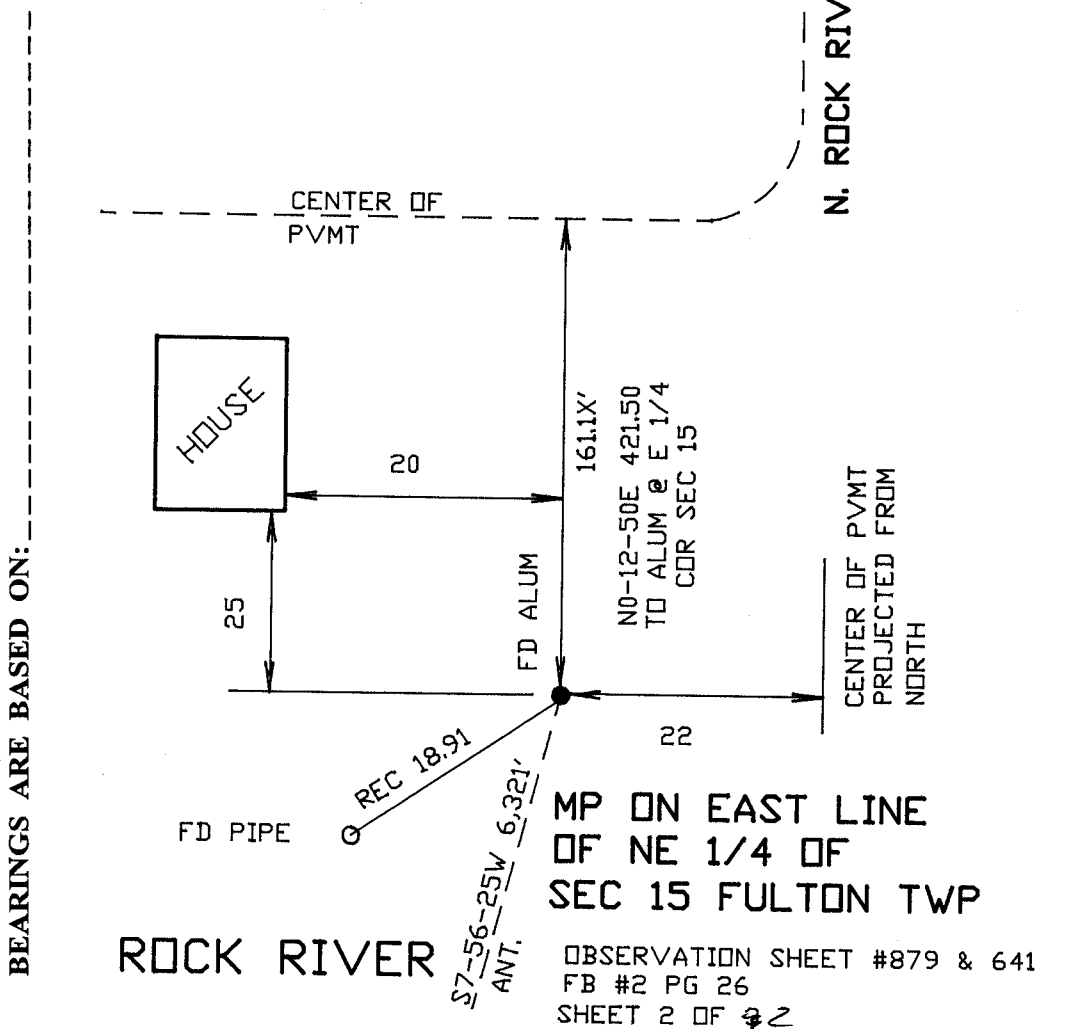
1	2	3	4	5	6	7	8	9	10	11	12	13	14	15	16	17	18	19	20	21	22	23	24	25	
A	6																								A
B		5																							B
C			4																						C
D				3																					D
E					2																				E
F						1																			F
G	7																								G
H		8																							H
I			9																						I
J				10																					J
K					11																				K
L	18																								L
M		17																							M
N			16																						N
O				15																					O
P					14																				P
Q	19																								Q
R		20																							R
S			21																						S
T				22																					T
U					23																				U
V						24																			V
W	30																								W
X		29																							X
Y			28																						Y
Z				27																					Z
					26																				
						25																			
	31																								
		32																							
			33																						
				34																					
					35																				
						36																			

PLACE MONUMENT SYMBOL \blacklozenge AT PROPER LOCATION ON ABOVE INDEX

\blacklozenge CORNER MONUMENT

\circ WITNESS MONUMENT

(a)



FIELD BOOK _____ PAGE # _____

SHEET 1 OF 2

SHOW A PLAN VIEW DRAWING DEPICTING THE CORNER MONUMENT AND SURROUNDING PHYSICAL FEATURES, INCLUDING THE EXCAVATION AREA AND DEPTH.

PLANNING & ZONING COMMITTEE ADOPTED THIS FORM ON 12/2/1982

CORNER CODE 400-17

FU_M.P.641

(B) Describe any record evidence, monument evidence, occupational evidence, testimonial evidence or any other material evidence you considered, and whether the monument was found or placed.

1834 (MAR/APR) HARRISON NORTH BETWEEN 14 & 15

2226.84 LEAVE ROCK RIVER & ESTABLISHED MEANDER POST ON RIGHT BANK BEARINGS {BURR O B S85E 87.12' W.O. B N51E 71.94'} MARKED

2392.5 TRAIL CRS E

2640 QUARTER SEC COR BEARINGS {BUR O B S85E 87.12' W.O. B N51E 71.94' BURR O B W.O. B9} MARKED

5280 COR TO SECS 10 11 14 15 {WO 24 N76W 161.04' HIGHY 12 S63W 36.3' W.O. 18 N35E 69.3' W.O. 18 S88E 151.8' LAND ROLLING 2ND RATE AND SAME AS BEFORE.

1836 (AUG) BURNHAM NORTH BETWEEN SECTIONS 14 & 15
T4N R12E

1419 TRAIL @ NE & SW

1815 TO LEFT BANK ROCK RIVER

2272.38 INT RIGHT BANK 268.62' WEST OF M.P. GOOD 2ND RATE ? & VELION? OAK OPENINGS BROKEN
SOUTH CORRECTED TO THE? SECS 14 & 15

457.38 SET MP ON LEFT B. W OAK 12 N61 1/2 E 15.18' W. OAK 16 S21W 49.5' WHITE OAK 18 IN DIA

1871 RUGER VOL 2 PG 53 FD BOTH BEARING TREES THE NE BEARING IS 12.21' DISTANT. SET STAKE & PUT HARD HEAD STONE ON THE SOUTH & LIMESTONE ON THE NORTH. VAR 6-44 421.74' TO E 1/4 COR SEC 15

1980 BARNES VOL 6 PG 107 SET ALUM. MON. ON LINE WITH THE NE & E 1/4 COR OF SEC 15 AT RUGER'S REC. DISTANCE. 20 EAST OF EAST FACE OF HSE

FD ALUM. MON.

C) Was the corner restored through acceptance of (1) an obliterated evidence location, or, (2) a found perpetuated location?

ACCEPTED FOUND ALUM. MON.

D) Describe any material discrepancy between the location of the corner as restored or reestablished and the location of that corner as previously restored or reestablished by distance and direction. Show the discrepancy on the plan view drawing under (a), above. Show the distances between the corner as previously restored or reestablished and (1) the corner as restored or reestablished, and (2) to at least 4 of the witness monuments shown on the drawing in (a), above.

(E) Was the corner reestablished through lost corner proportionate methods? If so, show the method, including the directions and distances to other public land survey corners used as evidence or used for proportioning the corner location.

I, **Donald Barnes**, hereby certify that the corner location as identified by the corner code index was determined by me under my direction and control and that this U.S. Public Land Survey Monument Record is correct and complete to the best of my knowledge and belief.

Seal
Donald
Barnes

Barnes

11/14/07

SHEET 1 OF 2

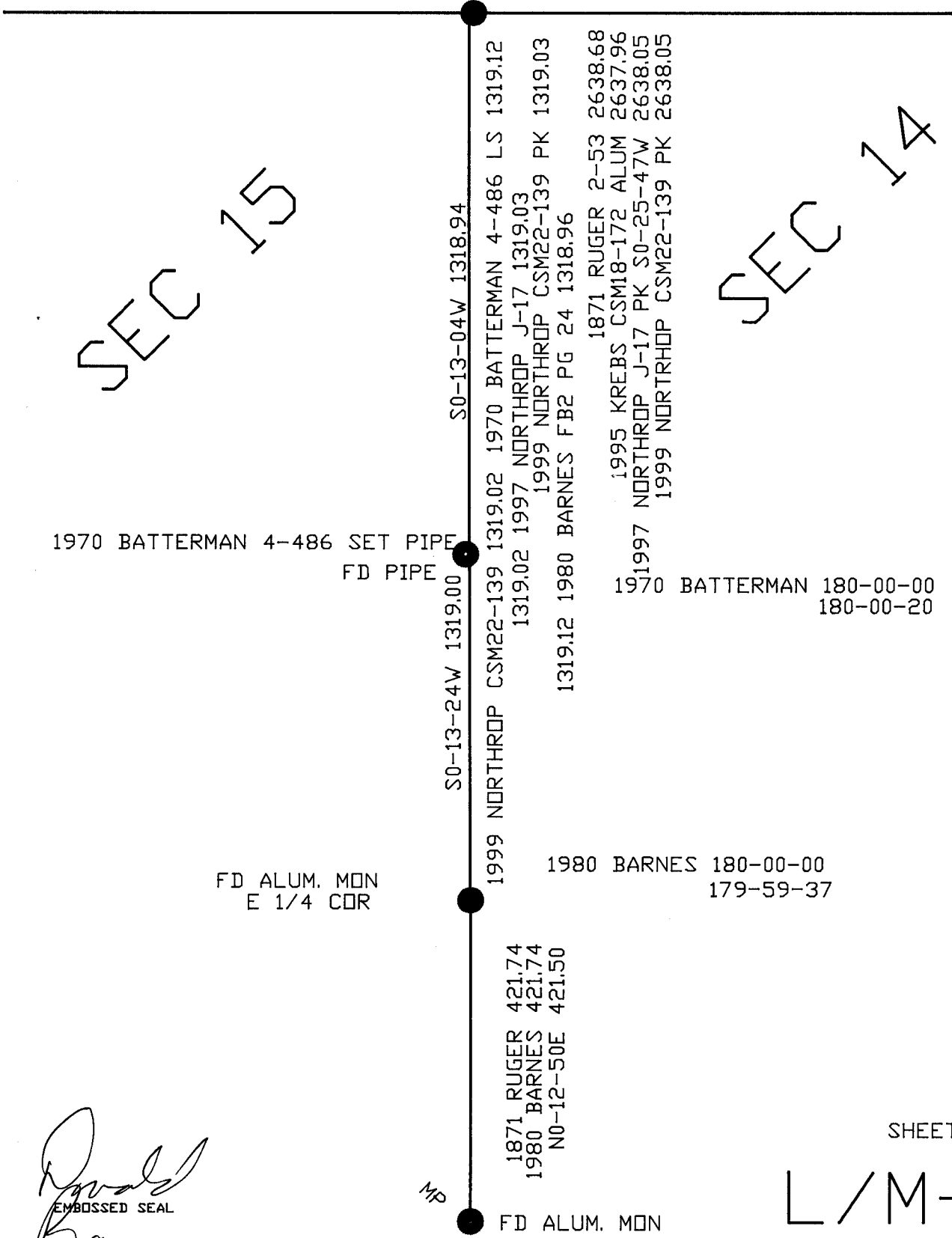
CORNER CODE
A.E. 7.08 REQUIREMENT

L/M-17

STEEL SURVEY PIN

SEC 15

SEC 14



1970 BATTERMAN 4-486 SET PIPE
FD PIPE

1970 BATTERMAN 180-00-00
180-00-20

FD ALUM. MON
E 1/4 COR

1980 BARNES 180-00-00
179-59-37

1871 RUGER 421.74
1980 BARNES 421.74
N0-12-50E 421.50

FD ALUM. MON

SHEET 2 OF 2

L/M-17

Donald Barnes
EMBOSSSED SEAL

11/14/07