

U.S. PUBLIC LAND SURVEY MONUMENT RECORD

For Public Land Survey Corners In:
T. 4 N. R. 12 E. 4th P.M.
CORNER CODE INDEX

WI ADMINISTRATIVE CODE A-E 7.08 REQUIREMENT
REV 10/23/2004 USMONREC.DWG

	1	2	3	4	5	6	7	8	9	10	11	12	13	14	15	16	17	18	19	20	21	22	23	24	25
A																									
B	6						5					4			3			2						1	
C																									
D																									
E																									
F																									
G	7						8					9			10			11					12		
H																									
J																									
K	18						17					16			15			14					13		
L																									
M																									
N																									
O																									
P	19						20					21			22			23					24		
Q																									
R																									
S																									
T	30						29					28			27			26					25		
U																									
V																									
W																									
X	31						32					33			34			35					36		
Y																									
Z																									

FULTON TWP
ROCK COUNTY WI

IF AVAILABLE
ROCK COUNTY COORDINATES PREFERRED

North _____ Elev. _____

East _____

Hor. Datum _____ Vert. Datum _____

LATITUDE _____ ELLIPS. HT. _____

LONGITUDE _____

NAD83(91) _____ NETWORK ADJ. YR _____

GPS (X) _____ TRAVERSE (X) _____

BASED ON THE FOLLOWING CONTROL:

PLACE MONUMENT SYMBOL AT PROPER LOCATION ON ABOVE INDEX

CORNER MONUMENT WITNESS MONUMENT

BEARINGS ARE BASED ON: _____

FIELD BOOK _____ PAGE # _____ SHEET 1 OF 3
SHOW A PLAN VIEW DRAWING DEPICTING THE CORNER MONUMENT AND SURROUNDING PHYSICAL FEATURES, INCLUDING THE EXCAVATION AREA AND DEPTH.
PLANNING & ZONING COMMITTEE ADOPTED THIS FORM ON 12/2/1982
CORNER CODE A-11

FU506^

(B) Describe any record evidence, monument evidence, occupational evidence, testimonial evidence or any other material evidence you considered, and whether the monument was found or placed.

1833 (SEP21ST) MULLETT & BRINK EAST ON SOUTH SIDE SECTION
33 T5N R12N

2640 SET QUARTER SECTION POST WHITE OAK 16 N16W
31.02' WHITE OAK 10 N43E 52.8'
3432 ENTER MARSH
3630 STREAM 19.8' @ SOUTH
3762 LEAVE MARSH
5280 SET POST CORNER SECTIONS 33 & 34 WHITE OAK
20 N77W 57.42' WHITE OAK 24 N45E 95.04' LAND
ROLLING SECOND RATE THINLY TIMBERED WITH BUR
WHITE AND BLACK OAK GOOD OBSERVATION AT THIS
CORNER VAR B-40

1873 GRAVES VOL 6 PG 349 DANE COUNTY SURVEYOR.
COMMENCED AT THE S 1/4 COR STUMPS STANDING SET STONE
WHERE THERE WAS A STAKE: THE LINE RUN NORTHY TO THE 1/4
COR GONE: 2644.62 FROM S 1/4 COR TO SW COR SEC 33,
2649.24 FROM S 1/4 COR SEC TO SE COR SEC 33, 2663.1
FROM S 1/4 COR SEC 33 TO CEN SEC 33, 5326.2 FROM S 1/4
COR SEC 33 TO N 1/4 COR SEC 33

1911 HINTZE ALBION T5N R12E SET SOUTH 1/4 OF SEC 33 BY I.S.
AT COUNTY CORNER ELM 12" S66W 56.2'; ELM 16" N34W
35.7'; NB9-11E 2675.3' TO SE COR SEC 33, SB9-00W 2648.3
TO SW COR SEC 33. PEG IS 46.7' SOUTH OF CEMENT POST.
WEST OF N 1/4 COR SEC 4, AT DANE COUNTY CORNERS HINTZE
INSTALLED CONCRETE MONUMENTS.

THE DIFFERENCE IN BEARING OF LINES
BETWEEN SECTION CORNERS GIVES THE TRUE DEVIATION
FROM THE STRAIGHT LINE. SOME OF THE BEARINGS ARE
MAGNETIC, CHECKED BY MEASUREMENTS, AND THE REST
ARE TRANSIT LINES CHECKED BY OBSERVATIONS ON
POLARIS. I HEREBY CERTIFY THAT THE DISTANCES AND
BEARINGS ARE CORRECT ACCORDING TO SURVEY MADE
UNDER THE PROVISIONS OF CHAPTER, 39 SECTION 825 OF
THE REVISED STATUTES OF WISCONSIN AND IN
ACCORDANCE WITH THE RULES ESTABLISHED BY THE
UNITED STATES LAND OFFICE.

1978 BARNES VOL 5 PG 433 DUG & FD NOTHING SET MIDWAY
BETWEEN NE & NW CORNER OF SEC & ON LINE WITH THE S 1/4
COR & SE COR OF SEC 33 T5N R12E. USED AIR PHOTO
COORDINATES TO DETERMINE DISTANCES AND LINE. SET
ALUM. MON. 1.5' NORTH OF E/W FENCE. 310,203.16 N/S;
2,246,116.032E/W. @ S 1/4 COR SEC 33 T5N R12E FD
SQUARE CONCRETE MON 1' DEEP. SET 2" IP HORIZONTALLY ON
SOUTH SIDE. ALSO FD PIPE NEAR S 1/4 COR SEC 33. S 1/4 COR
IS 98.00 WEST OF N 1/4 COR SEC 4. REF. SAME. S 1/4 COR IS
ON WEST EDGE OF N/S RD PROJECTED TO THE NORTH & 6'
NORTH OF SOUTH EDGE OF E/W PVMT PROJECTED FROM THE
WEST. COORDINATES OF S 1/4 COR SEC 33 IS 310,201.56;
2,246,018.04. FB #1 PG 39-43

FD EDGERTON AIR PHOTO CONTROL PT #3367 (CARRIAGE
BOLT), 55.86 TO FD CONC. MON., 53.00 TO FD PIPE, & 120.06
TO SET N 1/4 COR SEC 4. FD 1 1/2 PIPE AIR PHOTO CP [S2-08-
21W 959.32'] WEST OF PVMT. ANGLES @ CARRIAGE BOLT TO
FD CP 1 1/2 PIPE ARE:

CONC. MON TO CP 1 1/2 PIPE 168-37-10

FD PIPE TO CP 1 1/2 PIPE 167-44-58

SET ALUM @ N 1/4 SEC 4 TO CP 1 1/2 PIPE 114-51-43

1978 BARNES VOL 5 PG 434 NB9-03-52E 2721.08 TO NE COR
SEC 4

1981 AERO-METRIC PHOTO CONTROL NGVD 29 ELEVATION 871.75

1983 SCHROEDER CSM VOL 11 PG 226 STATES NOTHING ABOUT
MON.

SHEET 2 OF 3

CORNER CODE A-11

Ronald Barnes
May 8 2006

FU506

1983 WEIR GCM VOL 11 PG 240 FD ALUM.
1983 WEIR SUB #2153 ASSESSOR PLAT LOT 26 FD ALUM.

FD DANE COUNTY ALUM. MON. WITH TOP BROKE OFF NEAR S 1/4 COR SEC 33 & FD ROCK COUNTY ALUM. MON. AT N 1/4 COR SEC 4. DUG & FD 2.2' DEEP CONG. MON. WITH 1/8" STEEL PLUG IN TOP @ S 1/4 COR SEC 33. PLACED 2 MAGNETS ON SOUTH SIDE OF CONG. @ N 1/4 COR SEC 4 PLACED CARSONITE POST ON SOUTH SIDE OF ALUM. MON. BROKEN ALUM MON WAS IN GOOD VERTICAL CONDITION.

C) Was the corner restored through acceptance of (1) an obliterated evidence location, or, (2) a found perpetuated location?

ACCEPTED FD ALUM. MON. @ N 1/4 COR SEC 4 & FD CONG. MON. @ S 1/4 COR SEC 33.

D) Describe any material discrepancy between the location of the corner as restored or reestablished and the location of that corner as previously restored or reestablished by distance and direction. Show the discrepancy on the plan view drawing under (a), above. Show the distances between the corner as previously restored or reestablished and (1) the corner as restored or reestablished, and (2) to at least 4 of the witness monuments shown on the drawing in (a), above.

IN 1978 FD PIPE S7-03-10E 2.98' OF CONG. MON.
FD BROKEN DANE COUNTY ALUM. MON. BASE IS S26-44-26E 0.09' OF CONG. MON. REMOVED DANE COUNTY ALUM. MON. TO FIND CONG. MON.

(E) Was the corner reestablished through lost corner proportionate methods? If so, show the method, including the directions and distances to other public land survey corners used as evidence or used for proportioning the corner location.

I, **Donald Barnes**, hereby certify that the corner location as identified by the corner code index was determined by me under my direction and control and that this U.S. Public Land Survey Monument Record is correct and complete to the best of my knowledge and belief.

Seal
Donald Barnes

Emboss

May 8 2006

SHEET 2 OF 3

CORNER CODE **A-11**

A.E. 7.08 REQUIREMENT

T5N R12E
ALBION TWP

SEC 33
S 1/4 COR

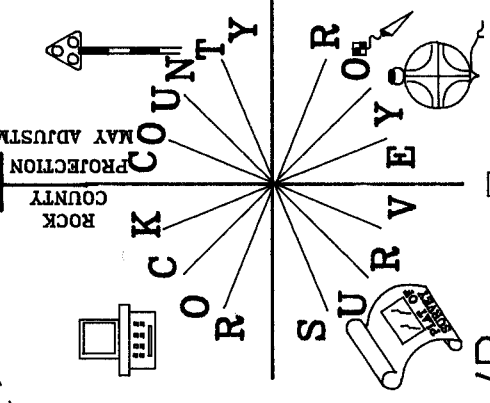
S89-35-07W 2646.82
1978 BARNES 2646.38
1911 HINTZE 2648.3
1911 HINTZE S89-00W
1877 GRAVES(DANE COUNTY SURVEYOR) 2644.62
1833 MULLETT & BRINK 2640.00

1935 ELY SW 32 TO N 1/4 4 2601.06
S89-35-21W 2721.38
XXXXXXXXXXXXXXXXXXXXXXXXXXXX

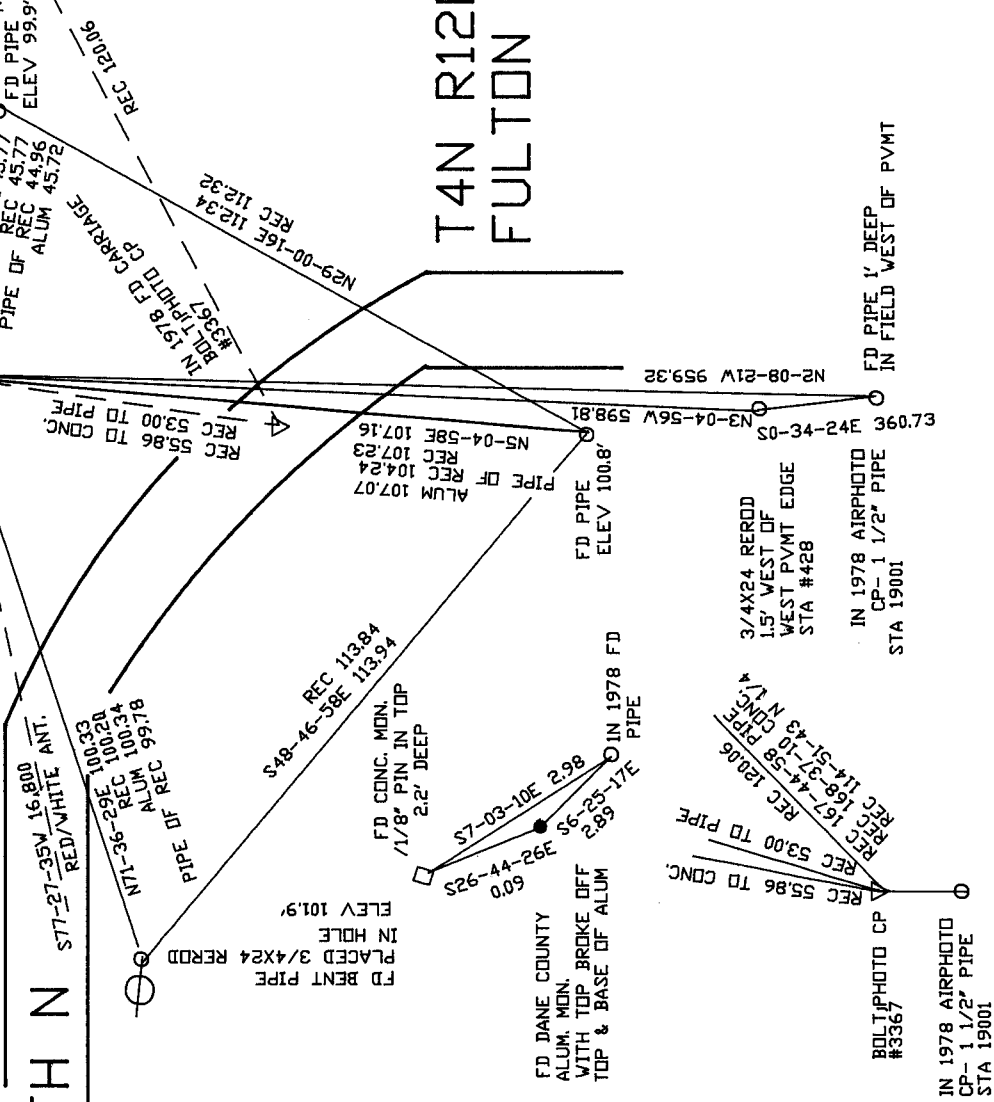
N 1/4 COR
SEC 4

FD ALUM.
PLACED CARSONITE
ON SOUTH SIDE
ELEV 97.4
FENCE DOWN

CTH N



T4N R12E
FULTON TWP



NOT TO SCALE
VERTICAL DATUM IS ASSUMED
OBSERVATION SHEETS 4626 & 14626

EMBOSSED SEAL
May 8 2006
Daryl Barnes