

Paper weight-110# (minimum)

Black nonfading ink required

U.S. PUBLIC LAND SURVEY MONUMENT RECORD

For Public Land Survey Corners In:

WI ADMINISTRATIVE CODE A-E 7.08 REQUIREMENT

T. 4 N. R. 12 E. 4th P.M.

REV 10/23/2004

USMONREC.DWG

CORNER CODE INDEX

1	2	3	4	5	6	7	8	9	10	11	12	13	14	15	16	17	18	19	20	21	22	23	24	25	
A																									A
B																									B
C	6																								C
D																									D
E																									E
F																									F
G																									G
H	7																								H
J																									J
K																									K
L	18																								L
M																									M
N																									N
O																									O
P	19																								P
Q																									Q
R																									R
S																									S
T	30																								T
U																									U
V																									V
W																									W
X	31																								X
Y																									Y
Z																									Z
1	2	3	4	5	6	7	8	9	10	11	12	13	14	15	16	17	18	19	20	21	22	23	24	25	

FULTON TWP
ROCK COUNTY WI
IF AVAILABLE
ROCK COUNTY COORDINATES PREFERRED

North _____ Elev. _____

East _____

Hor. Datum _____ Vert. Datum _____

LATITUDE _____ ELLIPS. HT. _____

LONGITUDE _____

NAD83(91) _____ NETWORK ADJ. YR _____

GPS (X) _____ TRAVERSE (X) _____

BASED ON THE FOLLOWING CONTROL:

PLACE MONUMENT SYMBOL AT PROPER LOCATION ON ABOVE INDEX

CORNER MONUMENT

WITNESS MONUMENT

BEARINGS ARE BASED ON: _____

FIELD BOOK _____ PAGE # _____

SHEET 1 OF 3

SHOW A PLAN VIEW DRAWING DEPICTING THE CORNER MONUMENT AND SURROUNDING PHYSICAL FEATURES, INCLUDING THE EXCAVATION AREA AND DEPTH.

PLANNING & ZONING COMMITTEE ADOPTED THIS FORM ON 12/2/1982

CORNER CODE R-11

FU586 ^

(B) Describe any record evidence, monument evidence, occupational evidence, testimonial evidence or any other material evidence you considered, and whether the monument was found or placed.

- 1836 (AUG) BURNHAM EAST RANDOM BETWN SECS 21 & 28
4620 LEAVE PRAIRIE
5241.06 INT EAST BOUNDY AT STAKE FIRST RATE DRY
PRAIRIE & BUR OAK OPENINGS
WEST CORRECTED BETWN SECS 28 & 21
2620.2 SET ¼ SEC POST BUR OAK 18 S61 ½E 36.96' NO
OTHER BEARING
NO STATIONS
5241.06 TO CORNERS
- 1843 TWP RD BK 1 PG 2 SURVEYED ON THIS INSTANT A PIECE OF
RD BEGINNING AT AN ANGLE POST IN A RD (A PART OF WHICH
HAS BEEN DISCONTINUED) THE SAID POST STANDS IN THE
LINE BETWEEN SEC 20 & 29, THENCE N81-30E BOUNDING THE
SAID LINES 1314.06' TO THE [SE COR SEC 20] CORNER OF
SEC 20 & 21, 28 & 29, THENCE ON THE LINE BETWEEN
SECTION 21 & 28 N81-30E 3923.7 TO AN ANGLE POST.
THENCE S63E 4488'; THENCE N84E 3267' TO THE QUARTER
STAKE BETWEEN SEC. 26 & 27; THENCE ON THE LINES
PASSING THROUGH THE CENTER OF 26 N82-15E 1402.5' TO
THE BUR OAK TREE; THENCE N76E 554.4' TO A WHITE OAK,
N17-45E 561' TO ANGLE POST, THENCE N47-45E 473.88';
THENCE N66-30E 864.6' INTERSECTING THE ABOVE
MENTIONED ROAD 1969.44' S76W OF THE ROAD LEADING
FROM JANESVILLE TO LAKE KOSHANONG.
- 1843 TWP RD BK 1 PG 16 BEGINNING AT AN ANGLE POST STANDING
ON A LINE BETWEEN SEC 20 & 29, THENCE N81-30E
BOUNDING THE SAID LINES 1314.06' TO THE [SE COR SEC
20] CORNER OF SEC 20 & 21, 28 & 29, THENCE ON THE LINE
BETWEEN SECTION 21 & 28 N81-30E 3923.7 TO AN ANGLE
POST. THENCE S63E 4488'; THENCE N84E 3267' TO THE
QUARTER STAKE BETWEEN SEC. 26 & 27; THENCE ON THE
LINES PASSING THROUGH THE CENTER OF 26 N82-15E
1402.5' TO THE BUR OAK TREE; THENCE N76E 554.4' TO A
WHITE OAK, N17-45E 561' TO ANGLE POST, THENCE N47-45E
473.88'; THENCE N66-30E 864.6' INTERSECTING THE ABOVE
MENTIONED ROAD 1969.44' S76W OF THE ROAD LEADING
FROM JANESVILLE TO LAKE KOSHANONG. [COX RD]
- 1893 BLEEDORN VOL 2 PG 474 FD REMAINS OF STAKE & ONE BT
STUMP. SET LIMESTONE 13X9½X3 SURROUNDED 4 HHS
- 1932 DOT #11583 STATES NOTHING ABOUT MON. CALLS FOR
CENTER OF STH 51 AS 1187' SOUTH & 1185 WEST OF S ¼
COR SEC 21
- 1974 LEE VOL 5 PG 12 AT S ¼ SEC 21-4-12 FD NOTHING SET MON
& REF. HALF-WAY BETWEEN SW & SE CORS. FB #170 PAGES
83, 117, & 118 FIELD BOOK CALLS FOR PLACEMENT OF AN
ALUM. MON. FIELD BOOK CALL DISTANCES TO REFERENCE
PIPES ARE THE SAME.
- 1976 BARNES VOL 5 PG 97 DIAGRAM OF SEC 21. FD MON. 2641.12
TO SW COR SEC 21, 2631.28 TO SE COR SEC 21, 2662.36 TO
CEN SEC 21, & 5326.24 TO N ¼ COR SEC 21.
- 1981 BARNES VOL 6 PG 211 FD ALUM. MON. ADDED RISER
- 1985 NORTHROP #13744 & #7421 ALUM. MON SO-38-55W TO S ¼
COR SEC 28
- 1985 COMBS #8012 SET R/R SPIKE AS PER VOL 5 PG 12, CO.
SURVEY RECORDS, 1320.62 EAST OF A SET R/R SPIKE @ THE
INT. OF THE CENTER OF PVMT.
- 1987 NORTHROP CSM VOL 13 PG 54 FD R/R OVER ALUM. N89-40-
11E TO NE COR SEC 28, S89-46-44W TO NW COR SEC 28,
EAST 335.0 TO NE COR OF CSM LOT, & WEST 380.0 TO NW
COR OF CSM LOT.

D. Barnes
11/15/07

FU586

2000 NORTHROP #7634 ALUM MON OF RECORD BY C.S. 2650.41
TO CENTER SEC 28 & 5299.84 TO S ¼ COR SEC 28, ANGLE OF
91-04-03 @ CENTER OF SEC 28 FROM W ¼ COR TO N ¼
CORNERS OF SEC 28, 91-17-44 @ S ¼ COR SEC 28 FROM SW
COR TO N ¼ CORNERS OF SEC 28
2002 NORTHROP #14234 ALUM MON.

FD R/R SPIKE WITH CHISELD V IN TOP.

C) Was the corner restored through acceptance of (1) an obliterated evidence location, or, (2) a found perpetuated location?

ACCEPTED FD R/R & ALUM. MON.

D) Describe any material discrepancy between the location of the corner as restored or reestablished and the location of that corner as previously restored or reestablished by distance and direction. Show the discrepancy on the plan view drawing under (a), above. Show the distances between the corner as previously restored or reestablished and (1) the corner as restored or reestablished, and (2) to at least 4 of the witness monuments shown on the drawing in (a), above.

THE RECORDED HISTORY OF THE CORNER SHOWS A DISCREPANCY IN THE CALL FOR THE PLACEMENT OF THE ALUM. MON BY LEE IN 1974. HIS STATED HIS INTENT WAS TO PLACE IT MIDWAY BETWEEN THE SW AND SE CORNERS OF SEC 21. THIS WOULD PLACE THE MONUMENT 5.04' FARTHER WEST. BECAUSE OF THE FOLLOWING REASONS I BELIEVE THE LOCATION IS WHERE LEE PLACED HIS ALUM. MON.:

- 1) MY DISTANCES TO HIS TWO REFERENCE MONUMENTS ARE IN HARMONY WITH HIS DISTANCES.
- 2) IN 1981, I ADDED RISERS TO HIS ALUM. MON.
- 3) MY 1976 DISTANCES TO THE ALUM. MON. ARE IN HARMONY WITH MY CURRENT MEASUREMENTS
- 4) COMBS' 1985 MEASUREMENT VERIFIES THE CORRECTNESS OF MY OBSERVATIONS.

LOCATION OF THE OLD CONG. HEADWALLS AND CULVERT ARE IN SUCH A LOCATION THAT I BELIEVE BLEEDORN'S LIMESTONE 13X9½X3 SURROUNDED BY 4 HHS WAS PROBABLY DESTROYED BY THE CULVERT CONSTRUCTION.

(E) Was the corner reestablished through lost corner proportionate methods? If so, show the method, including the directions and distances to other public land survey corners used as evidence or used for proportioning the corner location.

YES MY LEE.

I, **Donald Barnes**, hereby certify that the corner location as identified by the corner code index was determined by me under my direction and control and that this U.S. Public Land Survey Monument Record is correct and complete to the best of my knowledge and belief.

Seal
Donald Barnes
Emboss

SHEET 2 OF 3

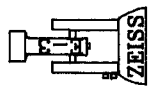
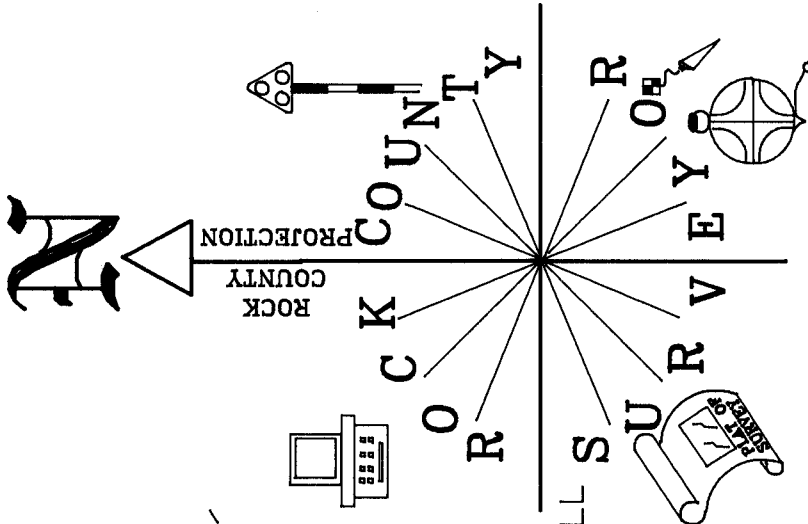
Barnes

11/15/07

CORNER CODE

R-11

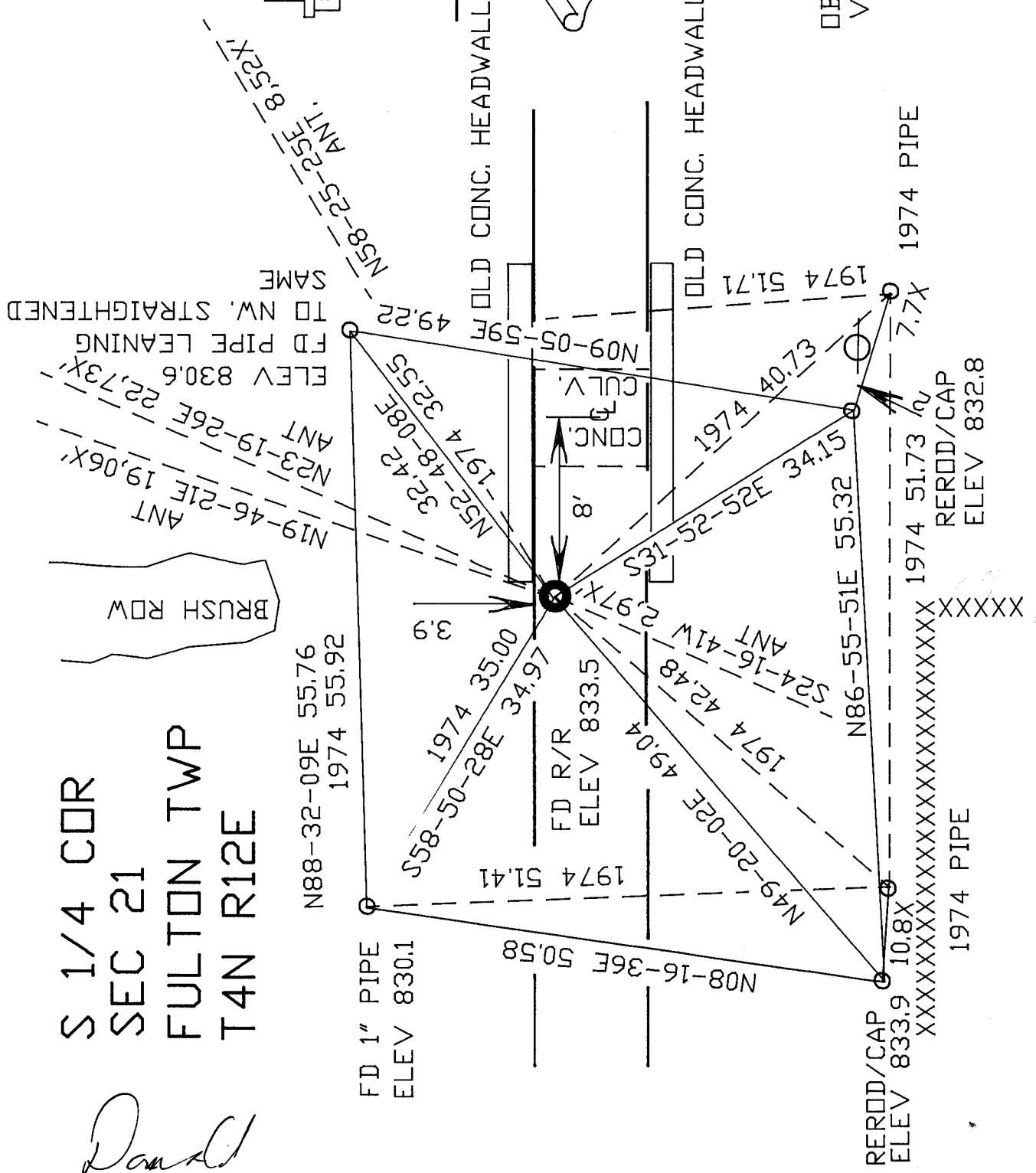
A.E. 7.08 REQUIREMENT



NOT TO SCALE

OBSERVATION SHEET 586
VERTICAL DATUM BASED
ON DIGITAL PHOTO

S 1/4 COR
SEC 21
FULTON TWP
T4N R12E



David Barnes
EMBOSSSED SEAL
11/15/07

SHEET 3 OF 3

R-11