

# U.S. PUBLIC LAND SURVEY MONUMENT RECORD

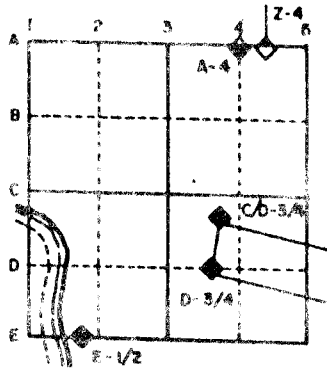
For Public Land Survey Corners in the  
T. 4 N., R. 11 E.

## CORNER CODE INDEX

	1	2	3	4	5	6	7	8	9	10	11	12	13	14	15	16	17	18	19	20	21	22	23	24	25
A																									
B																									
C	6																								
D		5																							
E			4																						
F				3																					
G					2																				
H																									
I																									
J																									
K																									
L																									
M																									
N																									
O																									
P																									
Q																									
R																									
S																									
T																									
U																									
V																									
W																									
X																									
Y																									
Z																									

PLACE MONUMENT SYMBOL (◆) AT PROPER LOCATION ON ABOVE INDEX

### EXAMPLE



PORTER TWP  
ROCK COUNTY WI

IF AVAILABLE  
STATE PLANE COORDINATES

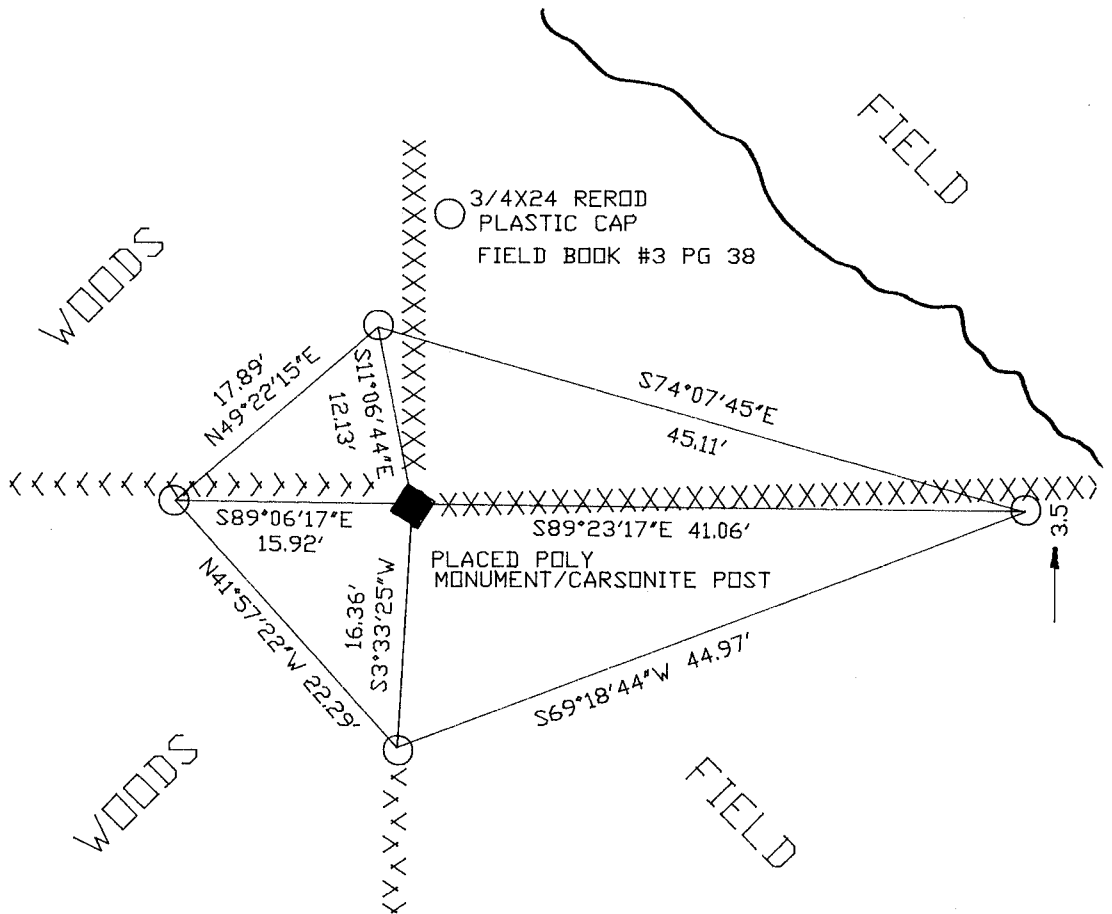
North (Y) \_\_\_\_\_ Elev. (Z) \_\_\_\_\_  
 East (X) \_\_\_\_\_ Zone \_\_\_\_\_  
 Hor. Datum \_\_\_\_\_ Vert. Datum \_\_\_\_\_

(a.)

◆ CORNER MONUMENT

○ WITNESS MONUMENT

BEARINGS ARE BASED ON:



FIELD BOOK 3 PAGE # 38

MICROFILMED

SHOW A PLAN VIEW DRAWING DEPICTING THE CORNER MONUMENT AND SURROUNDING PHYSICAL FEATURES, INCLUDING THE EXCAVATION AREA AND DEPTH. THE CORNER MONUMENT SHALL HAVE THE FOLLOWING CHARACTERISTICS: 1) HAVE AT LEAST TWO PREDETERMINED BREAK-OFF POINTS. 2) IF BROKEN, LEAVE A PERMANENTLY MAGNETIZED REMNANT AT THE ORIGINAL POINT. 3) MUST BE EXTENDABLE. 4) THE CAP IS INSCRIBED: ROCK COUNTY SURVEY MONUMENT - PENALTY FOR DISTURBING MARKER. 5) OR AN EXISTING CUT LIMESTONE. AN IRON PIPE 1 1/2" x 4'0" (MINIMUM) MAY BE USED IN AREAS WHERE GROUND WATER IS WITHIN ONE FOOT OF THE SURFACE. IF THE CORNER IS OCCUPIED BY AN IMPROVEMENT (MANHOLE, BURIED CABLE, ETC.) ANY DURABLE, DISTINCT MONUMENT MAY BE USED. CORNERS SHALL BE REFERENCED WITH AT LEAST 4 DURABLE WITNESS MONUMENTS. WITNESS MONUMENTS SHALL BE MADE OF CONCRETE, NATURAL STONE, IRON OR OTHER EQUALLY DURABLE MATERIAL, EXCEPT WOOD. DESCRIBE THE CORNER AND THE WITNESS MONUMENTS.

CORNER CODE:

R 11

(B) Describe any record evidence, monument evidence, occupational evidence, testimonial evidence or any other material evidence you considered, and whether the monument was found or placed.

1833 HARRISON ORIG. QUARTER SECTION CORNER. BURR OAK 12 N45W 37.62;BURR OAK 20 S3W 37.62'. CALLS FOR 2657.49' TO THE NE AND NW CORNERS OF SECTION 28.

1864 LOCKE VOL 1 PG 213 FOUND BTS. SET STAKE 2649.24 TO CENTER OF SECTION 21.

1871 RUGER VOL 2 PG 69 FOUND OLD STAKE AND NW BT AND STUMP OF SW BT. DROVE STAKE AND SURROUNDED WITH 3 HH.

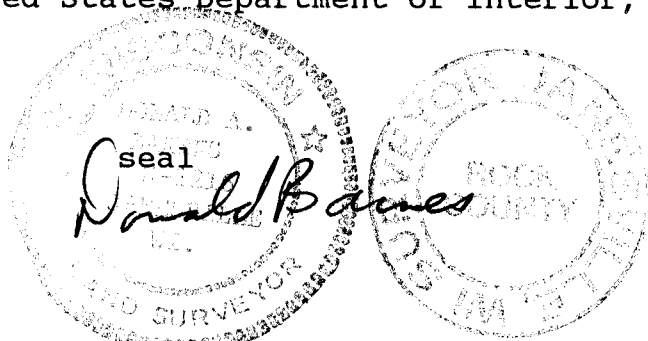
DUG AND FOUND OLD RED ROTTED POST SURROUNDED BY 4 LARGE HARD HEAD STONES. REPLACED POST WITH POLY MONUMENT WITH CARSONITE POST ON SW SIDE. THIS WAS IN HARMONY WITH OCCUPATION LINES IN THE INTERIOR OF SECTION 28.

C) Was the corner restored through acceptance of (1) an obliterated evidence location, or, (2) a found perpetuated location?  
ACCEPTED FOUND PERPETUATED LOCATION.

D) Describe any material discrepancy between the location of the corner as restored or reestablished and the location of that corner as previously restored or reestablished by distance and direction. Show the discrepancy on the plan view drawing under (a), above. Show the distances between the corner as previously restored or reestablished and (1) the corner as restored or reestablished, and (2) to at least 4 of the witness monuments shown on the drawing in (a), above.

(E) Was the corner reestablished through lost corner proportionate methods? If so, show the method, including the directions and distances to other public land survey corners used as evidence or used for proportioning the corner location.

I, Donald Barnes, hereby certify that the corner points as identified by the corner code index were, in a field survey on, August 3 1992, established, re-established, monumented, re-monumented, recovered or restored as expressed below and in conformance with the regulations and rules as required in the current manual of survey instructions of the United States Department of Interior, Bureau of Land Management.



COUNTY SURVEYOR FILING DATA

Date of computer entry \_\_\_\_\_

Date microfilmed \_\_\_\_\_

Number of included sheets \_\_\_\_\_  
CORNER CODE

AFFIX YOUR LAND SURVEYOR SEAL

R 11