

Paper weight-110# (minimum)

Black nonfading ink required

U.S. PUBLIC LAND SURVEY MONUMENT RECORD

For Public Land Survey Corners In:
T. 4N. R. 11E. 4th P.M.

WI ADMINISTRATIVE CODE A-E 7.08 REQUIREMENT
REV 10/23/2004 USMONREC.DWG

CORNER CODE INDEX

PORTER TWP

ROCK COUNTY WI

IF AVAILABLE

ROCK COUNTY COORDINATES PREFERRED

North _____ Elev. _____

East _____

Hor. Datum _____ Vert. Datum _____

LATITUDE _____ ELLIPS. HT. _____

LONGITUDE _____

NAD83(91) _____ NETWORK ADJ. YR _____

GPS (X) _____ TRAVERSE (X) _____

BASED ON THE FOLLOWING CONTROL:

	1	2	3	4	5	6	7	8	9	10	11	12	13	14	15	16	17	18	19	20	21	22	23	24	25		
A																											A
B																											B
C																											C
D																											D
E																											E
F																											F
G																											G
H																											H
J																											J
K																											K
L																											L
M																											M
N																											N
O																											O
P																											P
Q																											Q
R																											R
S																											S
T																											T
U																											U
V																											V
W																											W
X																											X
Y																											Y
Z																											Z

PLACE MONUMENT SYMBOL AT PROPER LOCATION ON ABOVE INDEX

CORNER MONUMENT

WITNESS MONUMENT

(a)

BEARINGS ARE BASED ON: -----

FIELD BOOK _____ PAGE # _____

SHEET 1 OF 2

SHOW A PLAN VIEW DRAWING DEPICTING THE CORNER MONUMENT AND SURROUNDING PHYSICAL FEATURES, INCLUDING THE EXCAVATION AREA AND DEPTH.

PLANNING & ZONING COMMITTEE ADOPTED THIS FORM ON 12/2/1982

CORNER CODE N-11

P0566

N1/4CORSEC21

(B) Describe any record evidence, monument evidence, occupational evidence, testimonial evidence or any other material evidence you considered, and whether the monument was found or placed.

1833 HARRISON (NOV 3RD) T4N R11E 4TH MER. EAST ON RAND. BET. 16 & 21

2640.0 TEMPY 1/4 SEC. COR.
4019.40 ROAD S & E
5286.60 INT. E BDY 3.3' NORTH OF POST LAND 1ST RATE ROLLING PRAIRIE GROWTH GRASS & WEEDS

WEST COR. WEST

2646.60 QUARTER SEC. COR
{SET A POST & RAISED A MOUND OF SOD & EARTH

2643.30 {PENCELED IN LIGHTLY UNDER 2646.60}
5286.60 SEC COR

1863 LOCKE VOL 1 PG 190 OLD POST LOST. SET LARGE IRREGULAR HARD HEAD 19X18X7. VAR 8-00 2636.70 TO NW & NE CORNERS OF SEC 21.

1864 LOCKE VOL 1 PG 213 VAR 8-00' 1318.35 TO HH 21X8X3 JUST NORTH OF FENCEPOST @ N 1/16TH COR OF NE 1/4 SEC 21, VAR 8-00' 2636.70 TO NE COR SEC 21, 2647.24 TO HH 19X14X8 ABOVE 3 SMALL LIMESTONE WITH 4 SMALL LIMESTONES ON N.S.E. & W @ CENTER OF SEC 21, & 5298.48 TO FD STAKE @ S 1/4 COR SEC 21. IT APPEARS LOCKE ESTABLISHED THE CENTER OF SEC 21 AT A POINT MIDWAY BETWEEN ALL THE 1/4 CORNERS.

1980 BARNES VOL 6 PG 39 AREA FILLED BY EROSION. FOUND STONE OF RECORD 2.5' DEEP. SET ALUM MON ON TOP OF STONE. LIMA TWP FB# 1 PG 11 FOR 1/16TH COR. @ FENCE INT. @ N 1/16TH COR OF THE NE 1/4 SEC 21 FD HH 21X8X3 IN HORIZONTAL POSITION NORTH OF THE REMAINS OF OLD POST. SET 3/4X32 IRON BOLT. IN LANE @ INT. OF FENCE LINES PROJECTED.

1980 COMBS CSM VOL 9 PG 274 ALUM. MON. FD STONE @ CENTER OF SEC 21, WHICH WAS USED FOR LINE

1995 LEUENBERGER #9412 & 9252 FD ALUM. SB9-36-55E 2650.82 TO IP @ NE COR SEC 21, SOUTH 2662.19 TO FD STONE OF REC @ CENTER OF SEC 21

FD ALUM. SET CARSONITE NEXT TO MON.

C) Was the corner restored through acceptance of (1) an obliterated evidence location, or, (2) a found perpetuated location?

ACCEPTED FD ALUM.

D) Describe any material discrepancy between the location of the corner as restored or reestablished and the location of that corner as previously restored or reestablished by distance and direction. Show the discrepancy on the plan view drawing under (a), above. Show the distances between the corner as previously restored or reestablished and (1) the corner as restored or reestablished, and (2) to at least 4 of the witness monuments shown on the drawing in (a), above.

(E) Was the corner reestablished through lost corner proportionate methods? If so, show the method, including the directions and distances to other public land survey corners used as evidence or used for proportioning the corner location.

I, Donald Barnes, hereby certify that the corner location as identified by the corner code index was determined by me under my direction and control and that this U.S. Public Land Survey Monument Record is correct and complete to the best of my knowledge and belief.

Seal

Emboss

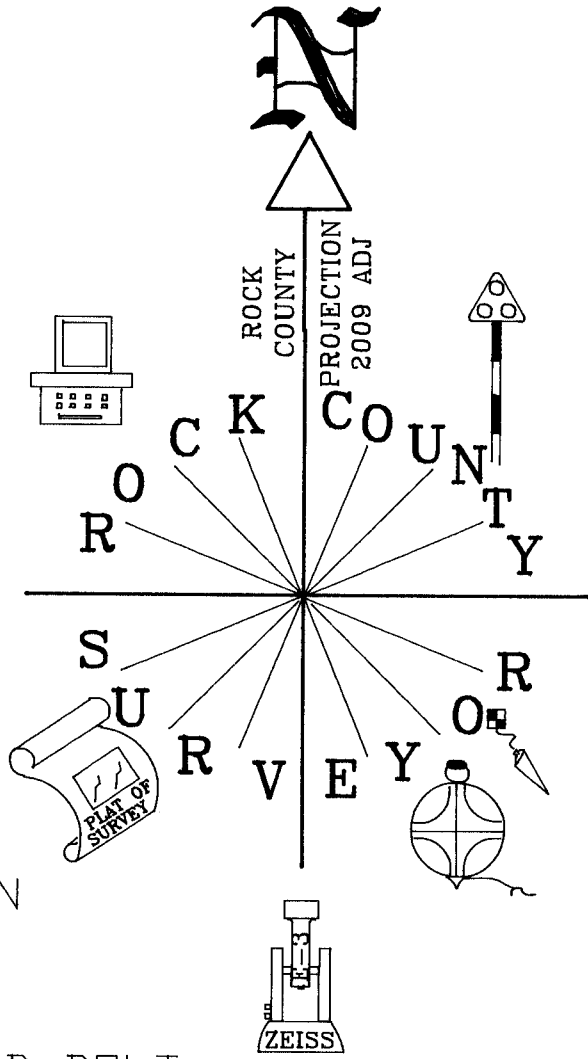

6-09-09

SHEET 1 OF 2

CORNER CODE N-11

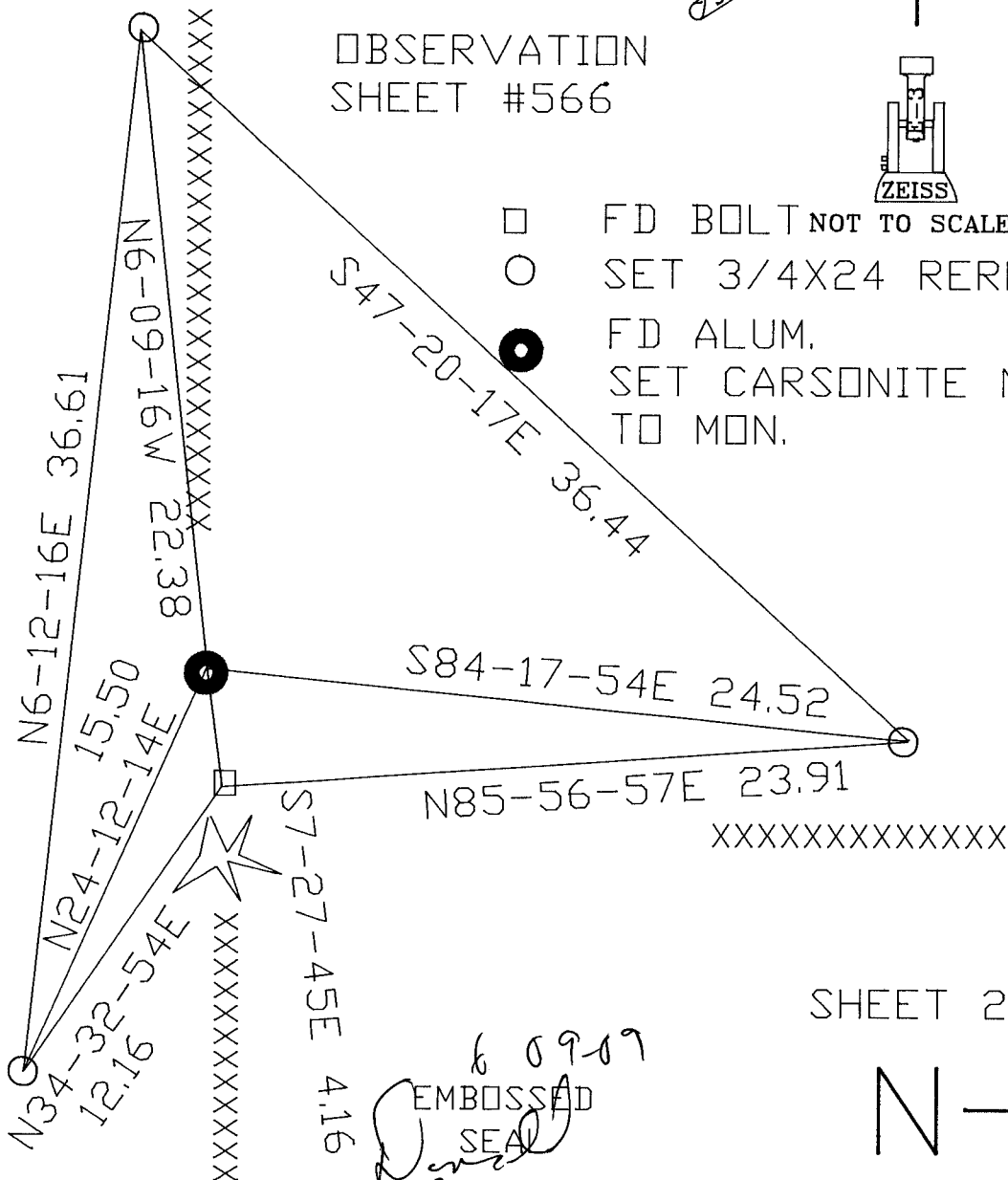
A.E. 7.08 REQUIREMENT

N 1/4 COR
 SEC 21
 PORTER TWP
 T4N R11E



OBSERVATION
 SHEET #566

- FD BOLT NOT TO SCALE
- SET 3/4X24 REROD
- FD ALUM. SET CARSONITE NEXT TO MON.



SHEET 2 OF 2

N-11

6 09-09
 EMBOSSED
 SEAL
Daniel Barnes