

Paper weight-110# (minimum)

Black nonfading ink required

U.S. PUBLIC LAND SURVEY MONUMENT RECORD

For Public Land Survey Corners In:
T. 4 N. R. 11 E. 4th P.M.
CORNER CODE INDEX

WI ADMINISTRATIVE CODE A-E 7.08 REQUIREMENT
REV 10/23/2004 USMONREC.DWG

A	1	2	3	4	5	6	7	8	9	10	11	12	13	14	15	16	17	18	19	20	21	22	23	24	25	A
B																										B
C																										C
D																										D
E																										E
F																										F
G																										G
H																										H
J																										J
K																										K
L																										L
M																										M
N																										N
O																										O
P																										P
Q																										Q
R																										R
S																										S
T																										T
U																										U
V																										V
W																										W
X																										X
Y																										Y
Z																										Z

PORTER TWP
ROCK COUNTY WI

IF AVAILABLE
ROCK COUNTY COORDINATES PREFERRED

North _____ Elev. _____

East _____

Hor. Datum _____ Vert. Datum _____

LATITUDE _____ ELLIPS. HT. _____

LONGITUDE _____

NAD83(91) _____ NETWORK ADJ. YR _____

GPS (X) _____ TRAVERSE (X) _____

BASED ON THE FOLLOWING CONTROL:

PLACE MONUMENT SYMBOL AT PROPER LOCATION ON ABOVE INDEX

CORNER MONUMENT WITNESS MONUMENT

BEARINGS ARE BASED ON: _____

FIELD BOOK _____ PAGE # _____

SHEET 1 OF 2

SHOW A PLAN VIEW DRAWING DEPICTING THE CORNER MONUMENT AND SURROUNDING PHYSICAL FEATURES, INCLUDING THE EXCAVATION AREA AND DEPTH.

PLANNING & ZONING COMMITTEE ADOPTED THIS FORM ON 12/2/1982

CORNER CODE V-11

PO606

S 1/4 COR SEC 28

(B) Describe any record evidence, monument evidence, occupational evidence, testimonial evidence or any other material evidence you considered, and whether the monument was found or placed.

1833 HARRISON (NOV) T4N R11E 4TH MER. EAST
BET. 28 & 33

2640.0 TEMPY 1/4 SEC COR
5280.0 INT. E BDY 5.28' NORTH OF POST
LAND ? SAME

WEST COR. WEST BET 28 & 33

1933.14 BURR OAK 12 IN DIAM
2640.0 QUARTER SEC COR {BURR OAK 12 N28E
27.06'; BURR OAK 18 S8E 52.80' {BURR
OAK 12; BURR OAK 18} MARKED

5280.00 SEC COR

1871 RUGER VOL 2 PG 69 ESTABLISHED FROM SEC CORS. DROVE
STAKE & SURROUNDED IT WITH 4 HH STONES, VAR 6-52
2664.42 TO SE COR SEC 28, VAR 6-52 2664.42 TO SW COR
SEC 28, VAR 7-16 TO N 1/4 COR SEC 28.

1982 BARNES VOL 6 PG 278 DUG & FD 2' DEEP WOOD 1/2" IN
DIAMETER & ABOUT 3" LONG. IT WAS AT SINGLE
PROPORTIONATE DISTANCE AS RUGER CALLED FOR IN
SURVEY. SET POLYSTYRENE MON. SHOWS AT FENCE INT.

1982 BARNES VOL 6 PG 279 N89-30-48W 2665.84 TO SE COR
SEC 28 & SW COR SEC 28.

1997 COMBS PLAT BK 32 PG 385 "FELLOWS HICKORY RIDGE"
ALUM. 5302.25 TO PK @ S 1/4 COR SEC 33.

1999 SCHROEDER GSM VOL 22 PG 198 STATES NOTHING ABOUT
MON. N89-45-06E TO SE COR SEC 33, N00-19-50W TO N 1/4
COR SEC 33

FD POLY MON.

C) Was the corner restored through acceptance of (1) an obliterated evidence location, or, (2) a found perpetuated location?

ACCEPTED POLY MON.

D) Describe any material discrepancy between the location of the corner as restored or reestablished and the location of that corner as previously restored or reestablished by distance and direction. Show the discrepancy on the plan view drawing under (a), above. Show the distances between the corner as previously restored or reestablished and (1) the corner as restored or reestablished, and (2) to at least 4 of the witness monuments shown on the drawing in (a), above.

(E) Was the corner reestablished through lost corner proportionate methods? If so, show the method, including the directions and distances to other public land survey corners used as evidence or used for proportioning the corner location.

YES, IN 1871 BY RUGER.

I, Donald Barnes, hereby certify that the corner location as identified by the corner code index was determined by me under my direction and control and that this U.S. Public Land Survey Monument Record is correct and complete to the best of my knowledge and belief.

Seal
Donald Barnes
Emboss

May 30, 2010

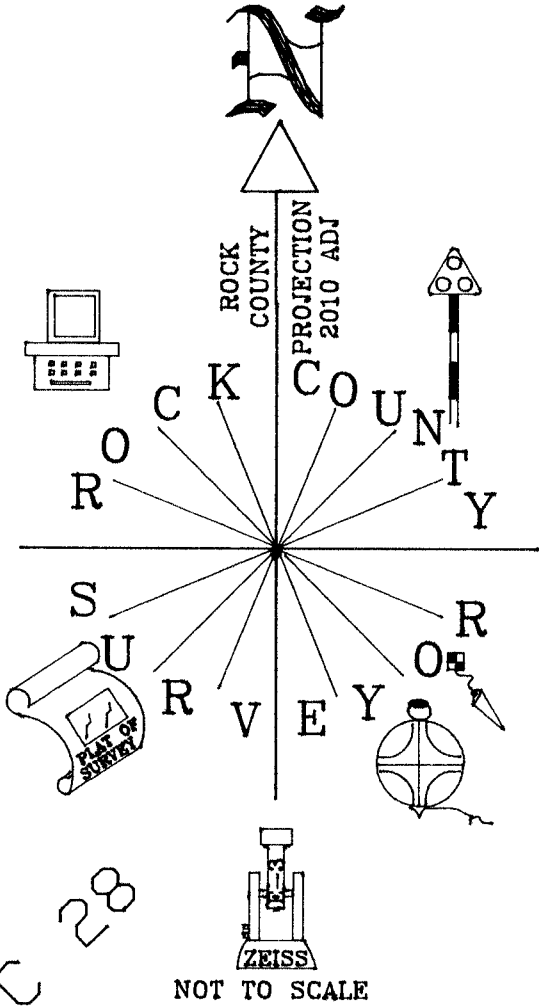
SHEET 1 OF 2

CORNER CODE

V-11

A.E. 7.08 REQUIREMENT

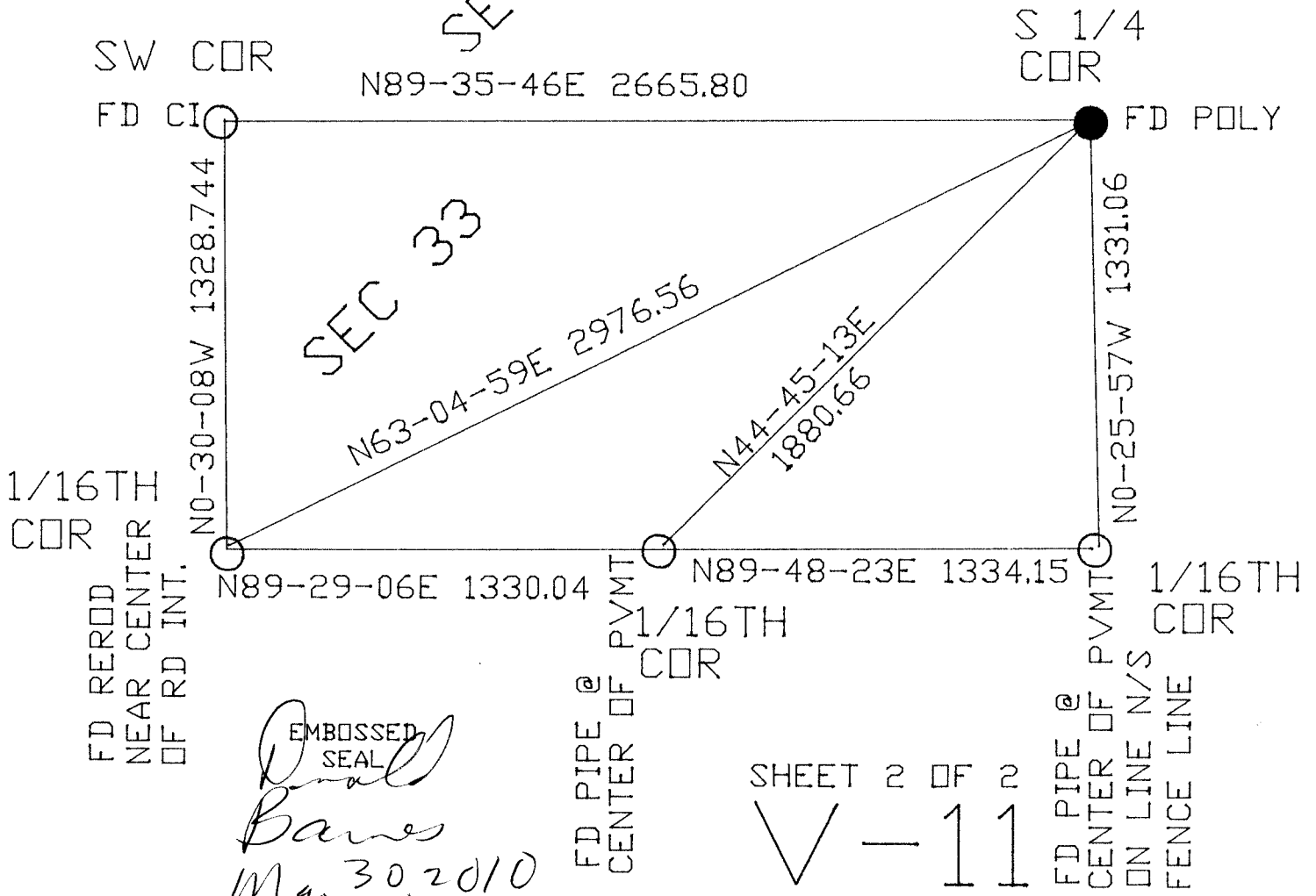
S 1/4 COR
 SEC 28
 T4N R11E
 PORTER TWP



NOT TO SCALE

SEC 28

SEC 33



EMBOSSSED SEAL
Donal Barnes
 May 30, 2010

SHEET 2 OF 2
 V-11