

# U.S. PUBLIC LAND SURVEY MONUMENT RECORD

For Public Land Survey Corners in:

WI ADMINISTRATIVE CODE A-E 7.08 REQUIREMENT

T. 5 N., R. 13 E

KOSHKONONG

CORNER CODE INDEX

A	1	2	3	4	5	6	7	8	9	10	11	12	13	14	15	16	17	18	19	20	21	22	23	24	25
B																									
C	6				5					A					3						2			1	
D																									
E																									
F																									
G	1				8					9					10						11			12	
H																									
J																									
K																									
L	18									17					16						15			14	
M																									
N																									
O																									
P																									
Q	19									20					21						22			23	
R																									
S																									
T																									
U																									
V																									
W																									
X																									
Y																									
Z																									

\_\_\_\_\_ TWP

ROCK COUNTY WI

IF AVAILABLE  
ROCK COUNTY COORDINATES PREFERRED

North \_\_\_\_\_ Elev. \_\_\_\_\_

East \_\_\_\_\_

Hor. Datum \_\_\_\_\_ Vert. Datum \_\_\_\_\_

LATITUDE \_\_\_\_\_ ELLIPS. HT. \_\_\_\_\_

LONGITUDE \_\_\_\_\_

GPS (X) \_\_\_\_\_ TRAVERSE (X) \_\_\_\_\_

BASED ON THE FOLLOWING CONTROL:

PLACE MONUMENT SYMBOL  $\blacklozenge$  AT PROPER LOCATION ON ABOVE INDEX

$\blacklozenge$  CORNER MONUMENT       $\circ$  WITNESS MONUMENT

(a)

THOMAS WOLLIN, JEFFERSON COUNTY SURVEYOR, PROVIDED THE STATE PLANE COORDINATES FOR CORNER CODE #8301 COR S<sup>1</sup>/<sub>4</sub> SEC 34 T5N R13E

STATE PLANE COORDINATES N/S 310,174,548  
NAD 1983/91 OF RECORD E/W 2,251,670,793

I DONALD BARNES CONVERTED THE ABOVE COORDINATES TO THE FOLLOWING:

LATITUDE 42-50-45.98537  
LONGITUDE 88-56-38.71317  
MERIDIAN CONV. 0-43-31.9  
SCALE FACTOR 0.9999791728

ROCK COUNTY COORDINATES (NAD 1983/91)

N/S 328,637.485  
E/W 514,365.619  
SCALE 0.9999973491

CONVERGENCE: THE ANGULAR DIFFERENCE BETWEEN THE GEODETIC NORTH & THE ROCK COUNTY MERCATOR NORTH

$\ominus$  1 DEG 0 MIN 05 SEC 13.7

BEARINGS ARE BASED ON:

*Donald Barnes*  
2/12/03

FIELD BOOK \_\_\_\_\_ PAGE # \_\_\_\_\_

SHEET 1 OF 1

SHOW A PLAN VIEW DRAWING DEPICTING THE CORNER MONUMENT AND SURROUNDING PHYSICAL FEATURES, INCLUDING THE EXCAVATION AREA AND DEPTH.

PLANNING & ZONING COMMITTEE ADOPTED THE ABOVE FORM ON 12/2/1982

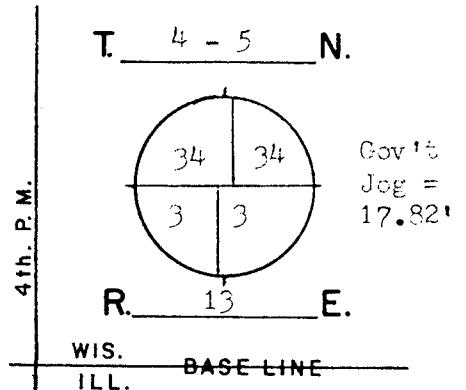
File in MILTON TWP  
CORNER CODE A 15/16

# GOVERNMENT LAND CORNER RECORD

## JEFFERSON COUNTY

CORNER NO. 8301

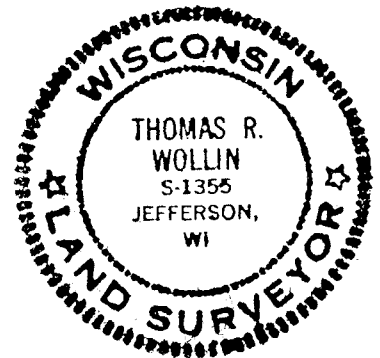
TYPE OF MONUMENT Aluminum & Concrete  
 STATE PLANE COORDINATES N. 310174.548 S $\frac{1}{4}$ -34  
NAD 1983/91 E. 2251670.793  
 ELEVATION M.S.L. DATUM: \_\_\_\_\_  
Grid-Ground 1.0000535853  
 FIELD BOOK Koshkonong p. 31  
 DRAWN BY TRW



### BASIS FOR MONUMENTATION

Original Survey, 1834-37, Wood Post & Bearing Trees  
 1871, Resurvey of Milton Township, Limestone Monuments were set. Ref. Rock County Surveyors Office.  
 1886, Resurvey of Koshkonong Township, Limestone Monuments were set. Notes recorded in the Register of Deeds, Misc. Vol. 1, pages 389-412.  
 1979, Found RR spike set over the stone to N $\frac{1}{4}$ -3. I measured over the jog distance and found a concrete monument with a brass disk marked "1955" marking the corner to S $\frac{1}{4}$ -34. The Resurvey stone was probably removed when intersection was cut and widened. I set an Aluminum Magnetized cap on and over the concrete monument for the corner.  
 2/8/2002, G.P.S. coordinates are established, A Topcon GP-SX1 single-frequency receiver was used.

SEAL:



DATA SHOWN HERE ON CERTIFIED CORRECT:

*Thomas R. Wollin*  
 REGISTERED LAND SURVEYOR

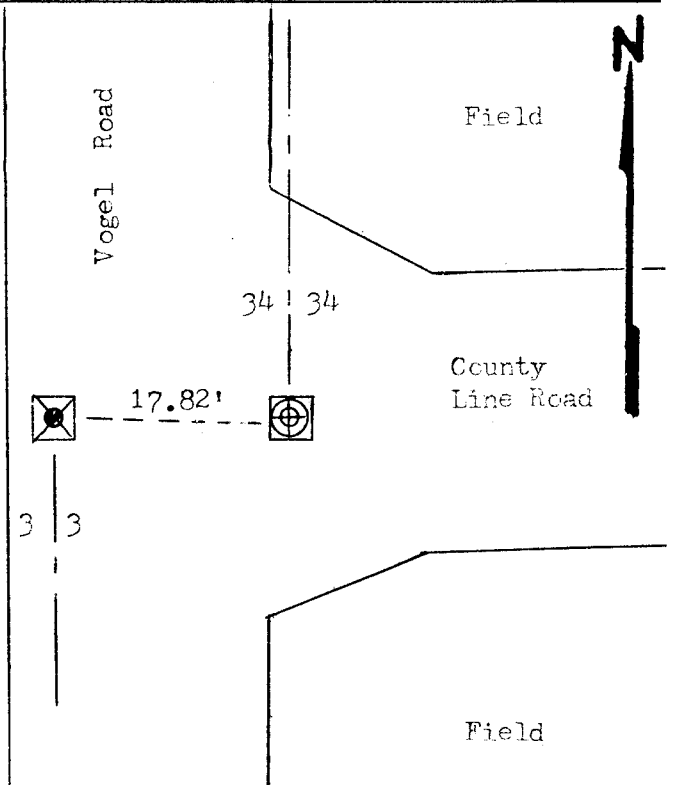
DATED 2/20/2002

### LOCATION SKETCH

- SQUARE CUT LIMESTONE 5" by 36"
- CONCRETE / BRASS CAP 5" square top
- ALUMINUM MAGNETIZED 4" by 9" Cap
- IRON PIPE
- T STEEL "T" BAR STAKE
- + PK NAIL
- \*\*\* FENCE
- UTILITY POLE
- STEEL POST / SIGN

### MAINTENANCE RECORD

DATE	INIT.	REMARKS



A 15/1 b