

Paper weight-110# (minimum)

Black nonfading ink required

U.S. PUBLIC LAND SURVEY MONUMENT RECORD

For Public Land Survey Corners In:

WI ADMINISTRATIVE CODE A-E 7.08 REQUIREMENT

T. 1 N. R. 12 E. 4th P.M.

REV 10/23/2004 USMONREC.DWG

CORNER CODE INDEX

BELoit TWP

ROCK COUNTY WI

IF AVAILABLE
ROCK COUNTY COORDINATES PREFERRED

A	1	2	3	4	5	6	7	8	9	10	11	12	13	14	15	16	17	18	19	20	21	22	23	24	25	A
B																										B
C	6						5							4												C
D																										D
E																										E
F																										F
G	7						8							9												G
H																										H
J																										J
K																										K
L	18						17							16												L
M																										M
N																										N
O																										O
P	19						20							21												P
Q																										Q
R																										R
S																										S
T	30						29							28												T
U																										U
V																										V
W																										W
X	31						32							33												X
Y																										Y
Z																										Z
	1	2	3	4	5	6	7	8	9	10	11	12	13	14	15	16	17	18	19	20	21	22	23	24	25	

North _____ Elev. _____

East _____

Hor. Datum _____ Vert. Datum _____

LATITUDE _____ ELLIPS. HT. _____

LONGITUDE _____

NAD83(91) _____ NETWORK ADJ. YR _____

GPS (X) _____ TRAVERSE (X) _____

BASED ON THE FOLLOWING CONTROL:

◆ CORNER MONUMENT

○ WITNESS MONUMENT

(a)

BEARINGS ARE BASED ON:-----

FIELD BOOK _____ PAGE # _____

SHEET 1 OF 2

SHOW A PLAN VIEW DRAWING DEPICTING THE CORNER MONUMENT AND SURROUNDING PHYSICAL FEATURES, INCLUDING THE EXCAVATION AREA AND DEPTH.

PLANNING & ZONING COMMITTEE ADOPTED THIS FORM ON 12/2/1982

CORNER CODE R-13(3)

BE587 NECORSEC28

(B) Describe any record evidence, monument evidence, occupational evidence, testimonial evidence or any other material evidence you considered, and whether the monument was found or placed.

- 1950 BATTERMAN MAP #80022 FOUND PIN
1958 SHIMEALL MAP #443 FOUND PIN 2660.80 TO E 1/4 CORNER SEC 21
1959 SHIMEALL SUBDIVISION PLAT BK 20 PG 6 FOUND 1" IRON PIN
1961 SHIMEALL SUBDIVISION PLAT BK 21 PG 7 1330.4 NORTH TO 1/16TH CORNER.
1962 SHIMEALL SUBDIVISION PLAT BK 21 PG 31 FOUND 1" PIN
1984 ROLOFF R-13 LOCATION OF THIS CORNER WAS REESTABLISHED OFF FROM VERIFIED EXISTING MONUMENTS FOUND ON THE EAST LINE OF THE PLAT OF CHRISTILLA HEIGHTS (RECORDED 6-21-59). I WAS UNABLE TO FIND IRON PIN AT SECTION CORNER AS SHOWN ON THE FACE OF THE PLAT PREPARED BY SURVEYOR CLAYTON SHIMEALL. SET PK & REFERENCED SAME.
1997 BARNES R-13(1) FOUND R/R SPIKE WITH DRILL HOLE THAT WAS IN HARMONY WITH EXISTING TIES. ACCEPTED FOUND PERPETUATED LOCATION. REFERENCED SAME.

FD SURVEY SPIKE, REFERENCE MONUMENTS, & COTTON GIN PIN (STA#863). JULY- CORNER IS 2.5' NORTH OF CENTER OF PVMT. MONUMENT WILL BE DESTROYED BY ROAD CONSTRUCTION. SET DURA-NAIL AFTER THE PAVEMENT WAS PLACED.

C) Was the corner restored through acceptance of (1) an obliterated evidence location, or, (2) a found perpetuated location?

ACCEPTED FD MONUMENT.

D) Describe any material discrepancy between the location of the corner as restored or reestablished and the location of that corner as previously restored or reestablished by distance and direction. Show the discrepancy on the plan view drawing under (a), above. Show the distances between the corner as previously restored or reestablished and (1) the corner as restored or reestablished, and (2) to at least 4 of the witness monuments shown on the drawing in (a), above.

NONE

(E) Was the corner reestablished through lost corner proportionate methods? If so, show the method, including the directions and distances to other public land survey corners used as evidence or used for proportioning the corner location.

NO

I, **Donald Barnes**, hereby certify that the corner location as identified by the corner code index was determined by me under my direction and control and that this U.S. Public Land Survey Monument Record is correct and complete to the best of my knowledge and belief.

Seal

Donald Barnes
Emitted

OCT 20 2008

SHEET 1 OF 2

CORNER CODE **R-13(3)**

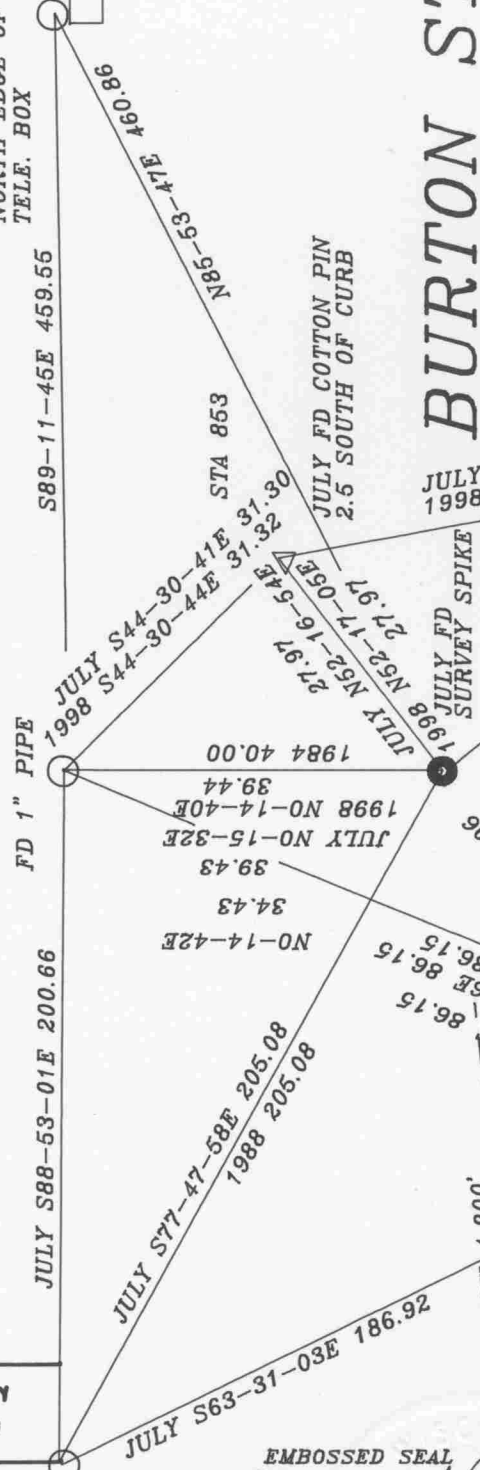
DESTROYED BY
SIDEWALK INSTALLATION
AFTER PAVING
ELEV 832.3
JULY FD 3" PIPE

LOT 19

CHRISTILLA HEIGHTS

ST.

ST.



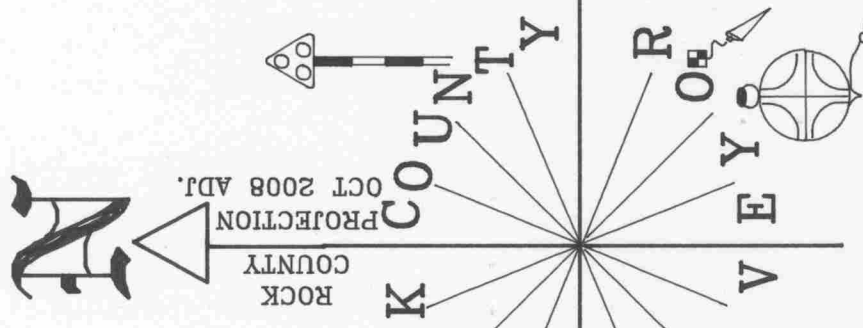
584-06-05W 4.800'
CELL TOWER

JULY FD SURVEY SPIKE

SET DURA-NAIL

CELL

EMBOSSSED SEAL
Donald Baine
OCT 20, 2008



BURTON ST
NE COR
SEC 28
BELOIT TWP
T1N R12E

FD 2 1/2" PIPE
ELEV 832.8

FD 2 1/2" PIPE
ELEV 833.3

SHEET 2 OF 2

R-13(3)

NOT TO SCALE

MONUMENT WAS DESTROYED BY RD CONSTRUCTION
ELEVATION'S BASED ON PHOTO @ SEC COR OF 834.0
OBSERVATION SHEET #587 & 853
OBSERVATION SHEET #587