

U.S. PUBLIC LAND SURVEY MONUMENT RECORD

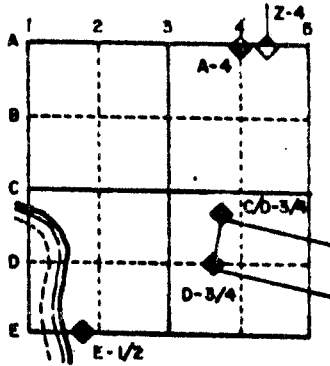
For Public Land Survey Corners in the
T. ___ N., R. ___ E.

CORNER CODE INDEX

	1	2	3	4	5	6	7	8	9	10	11	12	13	14	15	16	17	18	19	20	21	22	23	24	25
A																									
B																									
C	6																								
D		5																							
E			4																						
F				3																					
G					2																				
H																									
I																									
J	7																								
K		8																							
L			9																						
M				10																					
N					11																				
O						12																			
P							13																		
Q								14																	
R									15																
S										16															
T											17														
U												18													
V													19												
W														20											
X															21										
Y																22									
Z																	23								
																		24							
																			25						
																				26					
																					27				
																						28			
																							29		
																								30	
																									31
																									32
																									33
																									34
																									35
																									36

PLACE MONUMENT SYMBOL (◆) AT PROPER LOCATION ON ABOVE INDEX

EXAMPLE



CENTER TWP
ROCK COUNTY WI

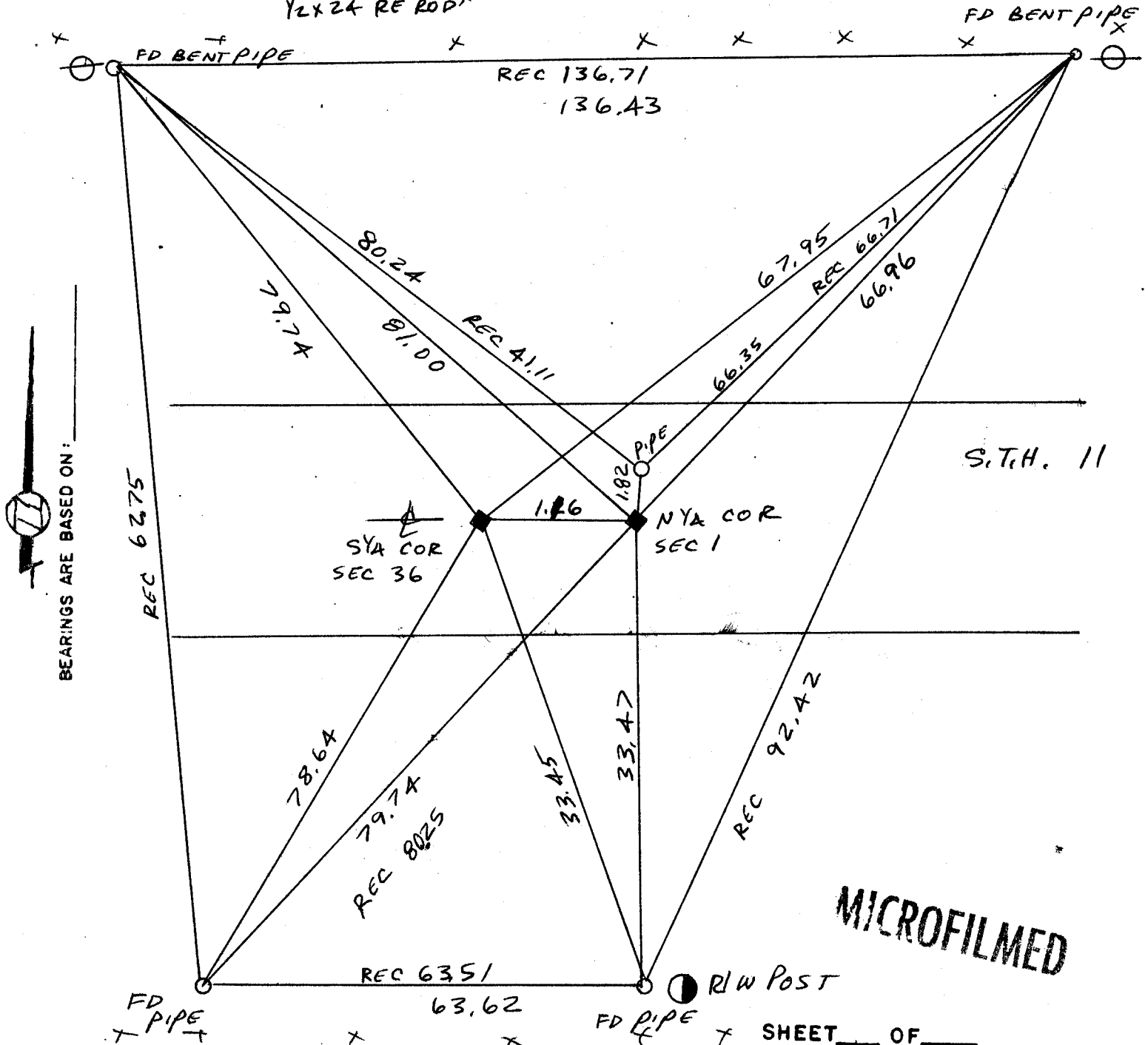
IF AVAILABLE STATE PLANE COORDINATES

North (Y) 246,125.79 Eleve. (Z) _____
 East (X) 2,231,251.80 Zone _____
 Hor. Datum _____ Vert. Datum _____
 USING D.O.T CONTROL

a.)

◆ CORNER MONUMENT
1/2 x 24 RE ROD

○ WITNESS MONUMENT



S.T.H. 11

MICROFILMED

FIELD BOOK #2 PG 77
#3 PG 2,7

CORNER CODE: Z 23

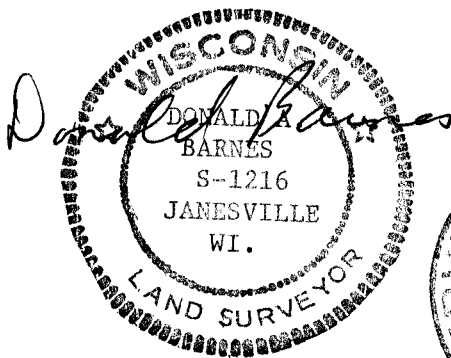
(A) Describe any record evidence, monument evidence, occupational evidence, testimonial evidence of any other material evidence you considered, and whether the monument was found or placed.

1868 LOCKE REMONUMENTATION INTERSECTED 1/4 LINE FOR TOWN 3 (CENTER) THREE LKS SOUTH OF COR. FOUND LARGE LIMESTONE IN CENTER OF HIGHWAY AND IN LINE OF N AND S FENCES. PLACED N 1/4 COR OF T2N 1.32' EAST OF THE S 1/4 COR SEC 36. FIELD NOTES SHOW A DISTANCE OF 2662.44 TO THE SW COR AND 2668.38 TO THE SE COR OF SEC 36.

1933 SUNNY VOL 3 PG 234 AT THE N 1/4 COR OF SEC 1 T2N HE SET 1" X 36" PIPE IN CONC. PAVEMENT 1.4' NORTH OF CENTER OF CONCRETE PAVEMENT IN LINE WITH S. FENCE. SHOWS THE S 1/4 COR SEC 36 1.32' WEST OF THE N 1/4 COR SEC 1 BUT STATES NOTHING ABOUT THE CORNER.

1970 BATTERMAN VOL 4 PG SHOWS A 3/4" PIN AT THE N 1/4 COR OF SEC 1 T2N BUT STATES NOTHING ABOUT THE S 1/4 COR SEC 36.

DUG AND FOUND 5'3" DEEP A LIMESTONE 15" X 6" X 2" POINT UP AND 1.26' TO THE EAST A CUT LIMESTONE. PLACED BENT PIPE HORIZONTALLY BY CUT LIMESTONE. DID NOT REMOVE STONE. CORNER IS AT THE CENTER OF THE PAVEMENT. IT APPEARS FROM THE EXCAVATION THAT SUNNY DID NOT DIG FOR THE CORNER. ACCEPTED FOUND LIMESTONE.



OCTOBER 18 1988

