

PUBLIC LAND SURVEY MONUMENT RECORD

For Public Land Survey Corners in the

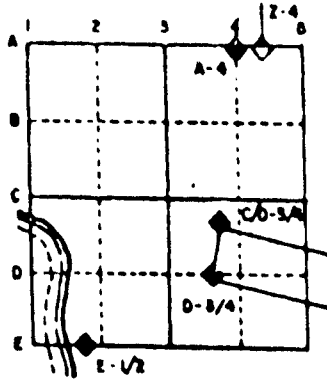
T. 3 N., R. 11 E

CORNER CODE INDEX

	1	2	3	4	5	6	7	8	9	10	11	12	13	14	15	16	17	18	19	20	21	22	23	24	25
A																									
B																									
C	6	5	4	3	2																				
D																									
E																									
F																									
G	7	8	9	10	11	12																			
H																									
I																									
J																									
K																									
L	16	17	18	19	20	21	22	23	24																
M																									
N																									
O																									
P	19	20	21	22	23	24																			
Q																									
R																									
S																									
T	30	29	28	27	26	25																			
U																									
V																									
W																									
X																									
Y	31	32	33	34	35	36																			
Z																									

PLACE MONUMENT SYMBOL (◆) AT PROPER LOCATION ON ABOVE INDEX

EXAMPLE



CENTER TWP
ROCK COUNTY WI

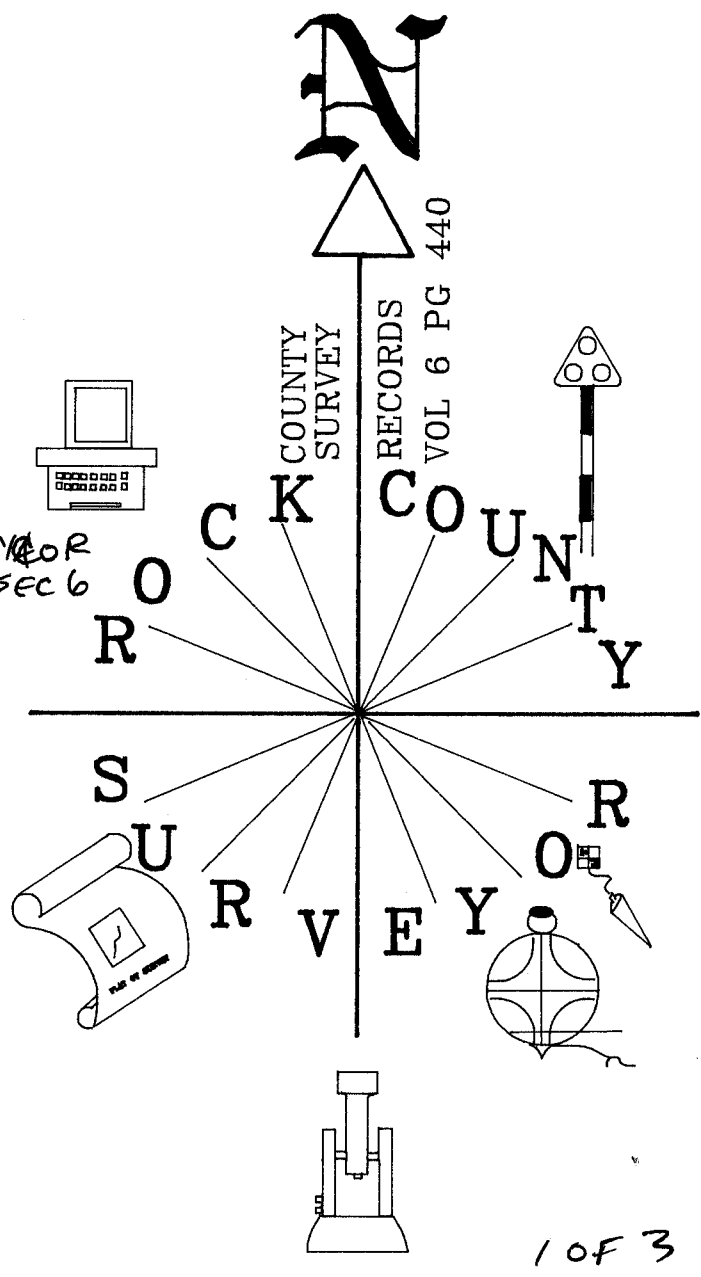
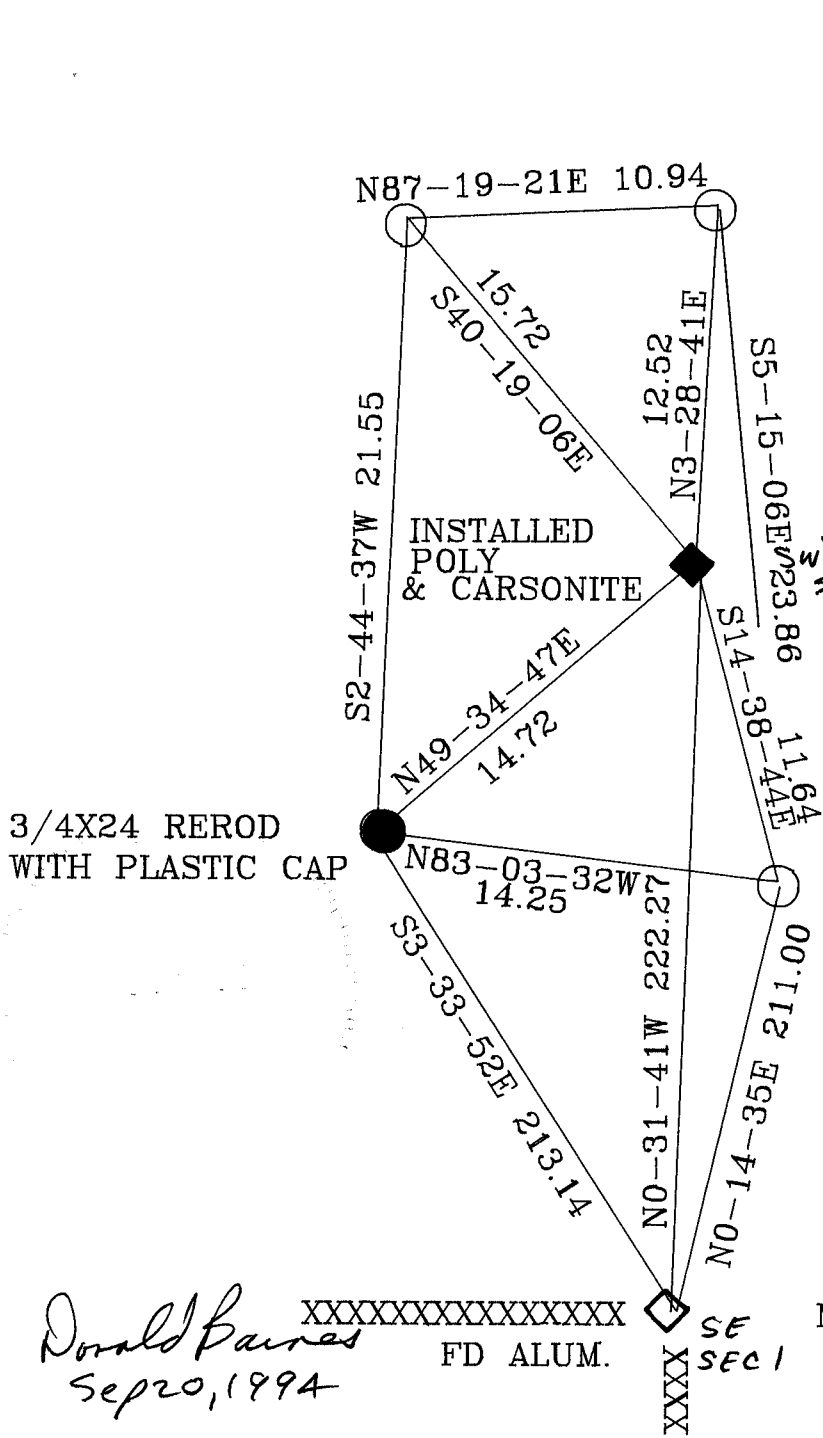
IF AVAILABLE
STATE PLANE COORDINATES

North (Y) _____ Elev. (Z) _____
 East (X) _____ Zone _____
 Hor. Datum _____ Vert. Datum _____

◆ CORNER MONUMENT

○ WITNESS MONUMENT

BEARINGS ARE BASED ON:



Donald Barnes
Sep 20, 1994

XXXXXXXXXXXXXXXXXXXX
FD ALUM.

MAGNOLIA TWP FB #4 PG43
○ 3/4X24 REROD

1 OF 3

E /

(B) Describe any record evidence, monument evidence, occupational evidence, testimonial evidence or any other material evidence you considered, and whether the monument was found or placed.

- 1833 DEC 1 st ORIGINAL SURVEYOR FIELD NOTES. WEST BETWEEN 6 & 7. 5205.42' INTERSECTED W BDG 222.42' NORTH OF POST. RAISED MOUND
- 1876 RUGER VOL 2 PG 218 EST. COR. FROM COR. FOR MAGNOLIA. DROVE STAKE IN DITCH OF SOD FENCE & SURROUNDED STAKE BY SMALL STONE. 222.42' TO SE CORNER SEC 1, 2578.29 TO S 1/4 CORNER OF SECTION 6, 2647.59 TO W 1/4 CORNER OF SECTION 7 CENTER TWP.
- 1876 RUGER VOL 2 PG 219 2635.05' TO W 1/4 CORNER OF SECTION 6 CENTER TWP.
- 1900 BROWN VOL 2 PG 520 FOUND STAKE SURROUNDED BY STONES. SET NEW STAKE SURROUNDED BY 4 BRICKS. CALLS FOR 2640 TO W 1/4 CORNER OF SECTION 6 CENTER TWP & 2586.54' TO S 1/4 CORNER OF SECTION 6.
- 1917 KERCH VOL 3 PG 15 FOUND STAKE & WHITE BRICK. CALLS FOR 2585.5 TO S 1/4 COR SEC 6 CENTER TWP & 222.42 TO SE CORNER OF SECTION 1 MAGNOLIA TWP.

DUG AND FOUND 2' DEEP ROTTED WOOD STAKE SURROUNDED BY 4 WHITE BRICKS AND ONE 6" STONE ON SOUTH SIDE. REPLACED WITH POLY MONUMENT. TOP IS 6" DEEP. PLACED SEVERAL MAGNETS 20" DEEP AROUND POLY. AND CARSONITE POST ON EAST SIDE. LIMITS OF HOLE IS AS FOLLOW: 3' NORTH OF POLY, 5' EAST OF POLY, 2' SOUTH OF POLY, AND 4' WEST OF POLY.

C) Was the corner restored through acceptance of (1) an obliterated evidence location, or, (2) a found perpetuated location?
ACCEPTED FOUND STAKE.

D) Describe any material discrepancy between the location of the corner as restored or reestablished and the location of that corner as previously restored or reestablished by distance and direction. Show the discrepancy on the plan view drawing under (a), above. Show the distances between the corner as previously restored or reestablished and (1) the corner as restored or reestablished, and (2) to at least 4 of the witness monuments shown on the drawing in (a), above.

(E) Was the corner reestablished through lost corner proportionate methods? If so, show the method, including the directions and distances to other public land survey corners used as evidence or used for proportioning the corner location.
NO

I, Donald Barnes, hereby certify that the corner points as identified by the corner code index were, in a field survey on, Sep 15, 1994, established, re-established, monumented, re-monumented, recovered or restored as expressed below and in conformance with the regulations and rules as required in the current manual of survey instructions of the United States Department of Interior, Bureau of Land Management.

seal

Donald Barnes
Sep 20, 1994

EMBOSS LAND SURVEYOR SEAL

COUNTY SURVEYOR FILING DATA

Date of computer entry _____

Date microfilmed _____

Number of included sheets _____
CORNER CODE

20F3

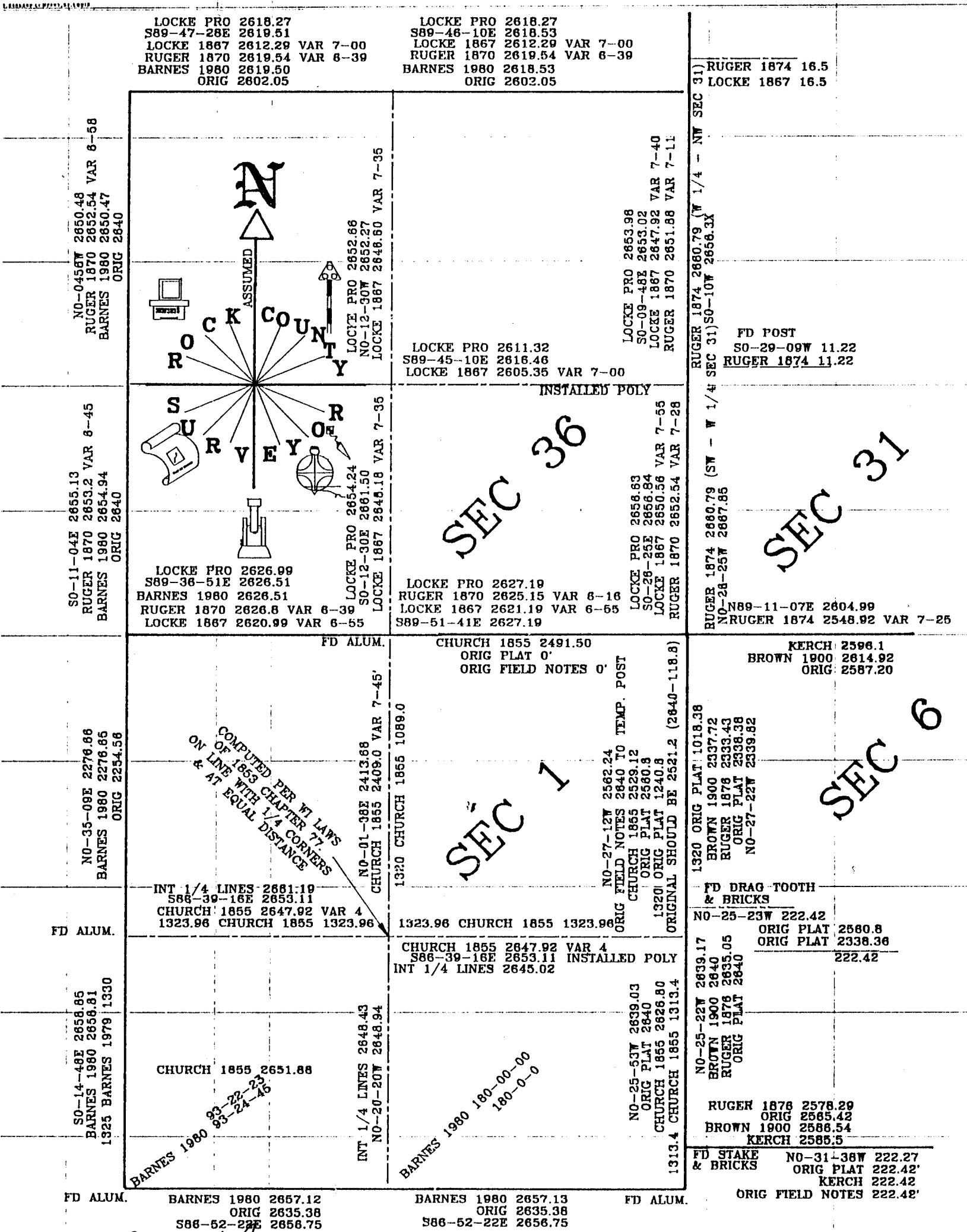
E1

0 VOL. 6 PLAT AND RECORD

Survey on Section 6 T 3 N. R. 10 E. of the 4 P. M. in CENTER UNION MAGNOLIA Township
 County, Wisconsin, made SEPTEMBER the 19 th 1994

I hereby certify that the following is a correct record of said survey as made by me.

County Surveyor.



J. D. Barnes
 Sep 20, 1994