

Paper weight-110# (minimum)

Black nonfading ink required

U.S. PUBLIC LAND SURVEY MONUMENT RECORD

For Public Land Survey Corners In:

WI ADMINISTRATIVE CODE A-E 7.08 REQUIREMENT

T. 4N. R. 12E. 4th P.M.

REV 10/23/2004

USMONREC.DWG

CORNER CODE INDEX

1	2	3	4	5	6	7	8	9	10	11	12	13	14	15	16	17	18	19	20	21	22	23	24	25	
A																									A
B																									B
C	6																								C
D																									D
E																									E
F																									F
G	7																								G
H																									H
J																									J
K																									K
L	18																								L
M																									M
N																									N
O																									O
P	19																								P
Q																									Q
R																									R
S																									S
T	30																								T
U																									U
V																									V
W																									W
X	31																								X
Y																									Y
Z																									Z

FULTON TWP
ROCK COUNTY WI

IF AVAILABLE
ROCK COUNTY COORDINATES PREFERRED

North _____ Elev. _____

East _____

Hor. Datum _____ Vert. Datum _____

LATITUDE _____ ELLIPS. HT. _____

LONGITUDE _____

NAD83(91) _____ NETWORK ADJ. YR _____

GPS (X) _____ TRAVERSE (X) _____

BASED ON THE FOLLOWING CONTROL:

PLACE MONUMENT SYMBOL AT PROPER LOCATION ON ABOVE INDEX

CORNER MONUMENT WITNESS MONUMENT

BEARINGS ARE BASED ON: _____

FIELD BOOK _____ PAGE # _____

SHEET 1 OF 3

SHOW A PLAN VIEW DRAWING DEPICTING THE CORNER MONUMENT AND SURROUNDING PHYSICAL FEATURES, INCLUDING THE EXCAVATION AREA AND DEPTH.

PLANNING & ZONING COMMITTEE ADOPTED THIS FORM ON 12/2/1982

CORNER CODE V-5

FU603 ^

(B) Describe any record evidence, monument evidence, occupational evidence, testimonial evidence or any other material evidence you considered, and whether the monument was found or placed.

- 1834 (APR 4) HARRISON EAST BETWEEN SECS 30 & 31
330 LEFT PRAIRIE
1358.94 BURR O 20 IN DIAM
2112 TRAIL NORTH
2310 TO SUMMIT OF BLUFF
2445.3 WO 18 IN DIAM
2475 INT. RIGHT BANK OF RIVER AT THE FOOT OF
BLUFF SET MEANDER POST {WO 12 S5W 52.8'
W.O. 20 N62W 80.52' LAND ROLLING 2ND RATE
WITH BURR & W.O. TIMBER UNDERGROWTH ?
GRASS & WEEDS APRIL 4TH 1834
- 1836 (AUG2) BURNHAM NORTH BETWEEN SECTIONS 29 & 30
1041.48 BUR OAK 16 IN DIA
1980 ENTER DRY PRAIRIE
2640 SET 1/4 SEC POST BUR OAK 12 N85 1/2E 304.26'
NO OTHER BEARING
3300 LEAVE DRY PRAIRIE
5280 SET POST COR TO 19,20,29,30 W. OAK 18
S60E 19.14' W. OAK 16 N7 1/2W 7.92'
FIRST RATE W & BUR OAK OPENINGS AND DRY
PRAIRIE
- 1836 (AUG) BURNHAM WEST RANDOM BETWN SECS 30 & 31
2084.28 TO LEFT BANK ROCK RIVER
2632.74 INT. RIGHT BANK 9.24' SOUTH MP FIRST RAT
BUR OAK OPENINGS
EAST CORRECTED BETWN SEC 31 & 30
548.46 SET MP ON LEFT BANK BUR OAK 10 N21E
21.78' Y OAK 8 S4E 25.74'
2632.74 TO CORNERS
- 1836 (AUG) BURNHAM EAST RANDOM BETW SECS 29 & 33
2442 ENTER DRY PRAIRIE
3300 LEAVE SAME
5214 INT. EAST BOUNDY 6.6' SOUTH FIRST RATE
BUR OAK OPENINGS & DRAY PRAIRIE
WEST CORRECTED BETWN SEC 32 & 29
NO STATIONS
2607 SET 1/4 SEC POST BUR OAK 12 N12 1/2E
107.58' NO OTHER BEARING
4955.28 BUR OAK 10 IN DIA
5214 TO CORNERS
- 1836 (AUG) BURNHAM NORTH BETWEEN SECS 31 & 32
1167.54 YELLOW OAK 16 IN DI
1676.4 W. OAK 16 IN DI
2640 SET 1/4 SEC POST W. OAK 16 N71 1/2W 34.32' Y.
OAK 8 N52E 29.7'
3584.46 YELLOW OAK 12 IN DI
4494.6 BUR OAK 18 IN DI
5280 SET POST COR TO 29,30,31,32 YELLOW OAK
16 N47 1/2E 7.92' BUR OAK 12 S59W 46.2'
FIRST RATE W Y & BUR OAK OPENINGS SOME
BROKEN
- 1850 STEBBINS TWP REC BK 1 PG 14 BEGINNING AT THE CENTER
OF THE HIGHWAY RUNNING DOWN ROCK RIVER FROM STONES
BRIDGE ON THE SECTION LINE BETWEEN SECTIONS 30 & 31
T4N R12E 1353' WEST OF THE NE COR OF SEC 31. THENCE
EAST ON THE SEC LINE BETWEEN SECTIONS 30,31,29 AND
32,28, & 33 7887' TO THE CENTER OF THE HIGHWAY
RUNNING FROM INDIAN FORD TO JANESVILLE [CHT F]. THE
WHOLE LENGTH OF THE ROAD IS 7887'. PUBLIC HIGHWAY 66
- 1864 LOCKE VOL 1 PG 201 FD BTS VAR 7-44 2645.28 TO W 1/4 COR
SEC 32, VAR 7-45 2618.22 TO N 1/4 COR SEC 32.
- 1865 LOCKE VOL 1 PG 243 & #6570 FD B. TREES.

SHEET 1 OF 3
CORNER CODE V-5

Donald Baynes
11/30/07

FU603

- 1884 RUGER VOL 2 PG 380 FD OLD STAKE AND STUMP OF NE BT AND WHERE SW BT HAD BEEN DUG UP. PUT IN PLACE OF STAKE L.S. 30X7X4 & SURROUNDED IT BY 4 HH. VAR 5-45 2621.19 TO S 1/4 COR SEC 29, VAR 6-02 2652.38 TO W 1/4 COR SEC 29
- 1925 ELY #1292 LS SURROUNDED BY HHS (MAY BE RECORD)
- 1975 WPL #1417, #1444 & #1430 283,423.15; 2,238,452.86 NO-34-06W 2656.39 TO W 1/4 COR SEC 29
- 1974 VOL 1 PG 201 COPIED FROM БЕЛОIT RECORDS 12/9/75 G.Q SET C.I. MON AT NE COR 31-4-12 WP&L MARCH 1974
- 1975 GRENLIE #1439 & 1461 ROCK COUNTY MON.
- 1976 LEE #1433 CI. 1324.75 TO E 1/16TH COR OF NE 1/4 SEC 31, 2071.85 TO MP ON LEFT BANK OF ROCK RIVER, ANGLE 89-34-46 @ NE COR SEC 31 FROM SET PIPE @ 1/16TH COR OF NE 1/4 SEC 31.
- 1977 LEUENBERGER CSM VOL 7 PG 138 FD PIPE SOUTH 1324.75 TO 1/16TH COR.
- 1978 GRENLIE CSM VOL 8 PG 133 & #1455 FD ALUM. MON.
- 1981 COMBS CSM VOL 10 PG 494 SYMBOL ISN'T IN THE LEGEND. ANGLE @ N 1/4 COR SEC 32 FROM N/S 1/4 LINE TO NW COR SEC 32 IS 89-46-25
- 1985 COMBS CSM VOL 10 PG 494 STATES NOTHING ABOUT MON.
- 1986 COMBS #13402 MORTGAGE INSPECTION CALLS FOR COR BUT STATES NOTHING ABOUT MON.
- 1989 SCHROEDER CSM VOL 14 PG 57 STATES NOTHING ABOUT MON.
- 1999 GRENLIE #1462 ALUM. 2625.11 TO N 1/4 COR SEC 32, 1324.76 TO PK @ W 1/16TH COR OF NW 1/4 SEC 32

FD CI.

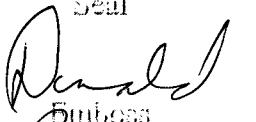
C) Was the corner restored through acceptance of (1) an obliterated evidence location, or, (2) a found perpetuated location?

ACCEPTED FD CI.

D) Describe any material discrepancy between the location of the corner as restored or reestablished and the location of that corner as previously restored or reestablished by distance and direction. Show the discrepancy on the plan view drawing under (a), above. Show the distances between the corner as previously restored or reestablished and (1) the corner as restored or reestablished, and (2) to at least 4 of the witness monuments shown on the drawing in (a), above.

(E) Was the corner reestablished through lost corner proportionate methods? If so, show the method, including the directions and distances to other public land survey corners used as evidence or used for proportioning the corner location.

I, **Donald Barnes**, hereby certify that the corner location as identified by the corner code index was determined by me under my direction and control and that this U.S. Public Land Survey Monument Record is correct and complete to the best of my knowledge and belief.

Seal

Embloss
Barnes

SHEET 2 OF 3

11/30/07

CORNER CODE

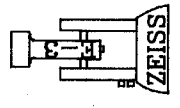
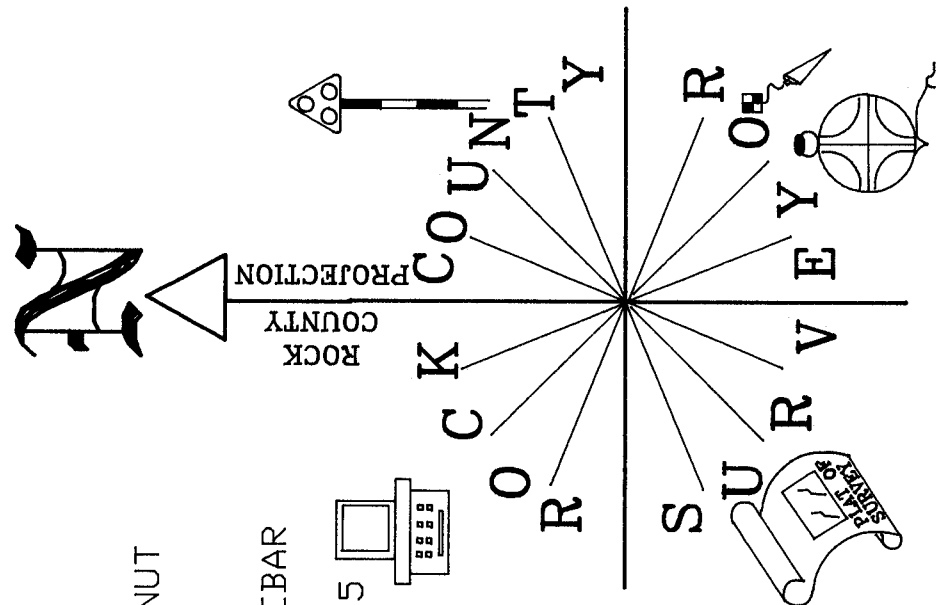
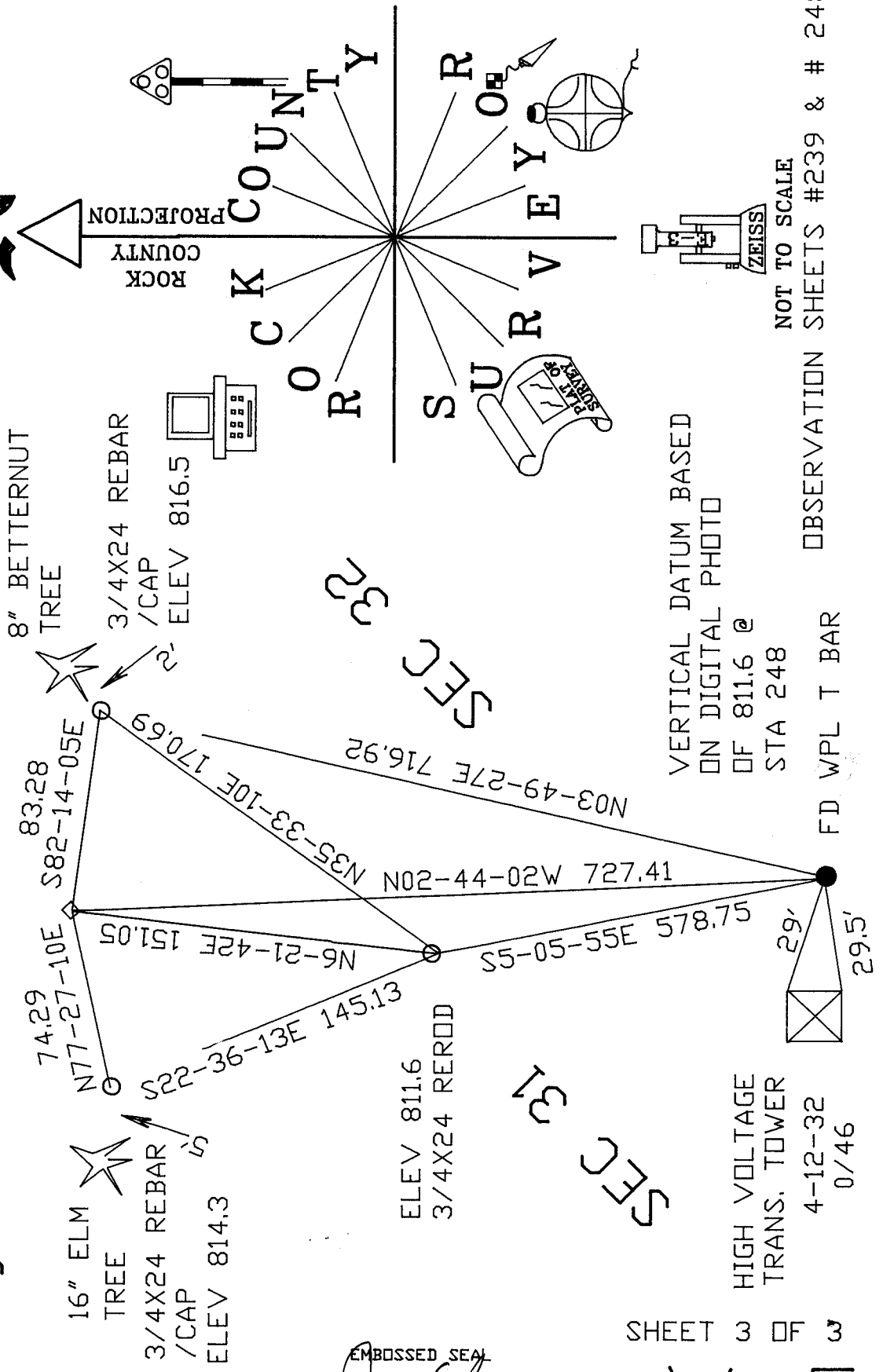
V-5

A.E. 7.08 REQUIREMENT

NE COR
SEC 31
FD CI
SET CARSONITE
DN NW SIDE
DF CI
ELEV 617.8

SEC 29

SEC 30



VERTICAL DATUM BASED
ON DIGITAL PHOTO
OF 811.6 @
STA 248

NOT TO SCALE
OBSERVATION SHEETS #239 & # 248

HIGH VOLTAGE
TRANS. TOWER
4-12-32
0/46

FD WPL T BAR

SHEET 3 OF 3

EMBOSSSED SEAL
Donald
Barney
11/30/07

V I U