

# U.S. PUBLIC LAND SURVEY MONUMENT RECORD

For Public Land Survey Corners in:

WI ADMINISTRATIVE CODE A-E 7.08 REQUIREMENT

T. 4N., R. 13E

### CORNER CODE INDEX

A	1	2	3	4	5	6	7	8	9	10	11	12	13	14	15	16	17	18	19	20	21	22	23	24	25
B																									
C	6					5					4				3					2				1	
D																									
E																									
F																									
G	7					8					9				10					11				12	
H																									
J																									
K																									
L	18					17					16				15					14				13	
M																									
N																									
O																									
P	19					20					21				22					23				24	
Q																									
R																									
S																									
T	30					29					28				27					26				25	
U																									
V																									
W																									
X	31					32					33				34					35				36	
Y																									
Z																									

MILTON TWP

ROCK COUNTY WI

IF AVAILABLE  
ROCK COUNTY COORDINATES PREFERRED

North \_\_\_\_\_ Elev. \_\_\_\_\_

East \_\_\_\_\_

Hor. Datum \_\_\_\_\_ Vert. Datum \_\_\_\_\_

LATITUDE \_\_\_\_\_ ELLIPS. HT. \_\_\_\_\_

LONGITUDE \_\_\_\_\_

GPS (X) \_\_\_\_\_ TRAVERSE (X) \_\_\_\_\_

BASED ON THE FOLLOWING CONTROL:

PLACE MONUMENT SYMBOL  AT PROPER LOCATION ON ABOVE INDEX

CORNER MONUMENT       WITNESS MONUMENT

BEARINGS ARE BASED ON:

OBSERVATION SHEET

FIELD BOOK \_\_\_\_\_ PAGE # \_\_\_\_\_

SHEET 1 OF 3

SHOW A PLAN VIEW DRAWING DEPICTING THE CORNER MONUMENT AND SURROUNDING PHYSICAL FEATURES, INCLUDING THE EXCAVATION AREA AND DEPTH.

PLANNING & ZONING COMMITTEE ADOPTED THE ABOVE FORM ON 12/2/1982

CORNER CODE V-5

MI603

(B) Describe any record evidence, monument evidence, occupational evidence, testimonial evidence or any other material evidence you considered, and whether the monument was found or placed.

**1836 BURNHAM NORTH BETWEEN SECTIONS 31 & 32**

**NO STATIONS**

- 2640 SET ¼ SEC POST BUR OAK 10 N66 1/2W 22.44', BUR OAK 12 S26E 13.86'  
2973.96 BUR OAK 14 IN DIA  
4320.36 BUR OAK 14 IN DIA  
5280 SET POST COR TO 29,30,31,& 32 WHITE OAK 14 S48E 33.66', BUR OAK 8  
N43 ½W 23.76'. FIRST RATE W & BUR OAK OPENINGS.

**EAST RANDOM BETW SEC 29 & 32**

- 4620 ENTER DRY PRAIRIE  
5243.7 INT. EAST BOUND 11.22' NORTH FIRST RATE BUR OAK OPENINGS & DRY  
PRAIRIE

**WEST CORRECTED BETW 29 & 32**

**NO STATIONS**

- 2621.52 SET ¼ SEC POST BUR OAK 8 N57W 44.88', BUR OAK 8 S39 ½E 35.64'.  
5243.7 TO CORNERS.

**WEST RANDOM BETW SEC 30 & 31**

- 5049 INT. RANGE LINE 59.4' SOUTH. BUR OAK 12 N 6 ½ E 45.54', BUR OAK 10  
S10E 330'. FIRST RATE W. & BUR OAK OPENINGS

**EAST CORRECTED BETW 31 & 30**

**NO STATIONS**

- 2409 SET ¼ SEC POST BUR OAK 12 S52 ½W 56.1' NO OTHER BEARING NO  
STATIONS  
5049 TO CORNERS

**NORTH BETWEEN SECTIONS 29 & 30**

- 2310 ENTER DRY PRAIRIE  
2640 SET ¼ SEC POST BUR OAK 18 S56 1/2E 78.54' NO OTHER BEARING  
4620 LEAVE PRAIRIE  
5280 SET POST COR TO 18,19,29, & 30 BUR OAK 12 S53E 29.04'. BUR OAK 10 N60W  
36.3' FIRST RATE BUR OAK OPENINGS & DRY PRAIRIE

**1871 RUGER REMON. PG 273 EAST ON NORTH LINE OF N.E. ¼ OF SEC 31 ON A  
VAR 3-45.**

- 2647.92 INTERSECTED EAST BOUNDARY LINE 19.8' SOUTH OF COR. FD S.E.  
BEARING TREE & WHERE STUMP OF N.W. B.T. HAD BEEN DUG UP.  
ESTABLISHED CORNER FROM THEM. CORRECTED VAR 4-11

**EAST ON NORTH LINE OF NW ¼ OF SEC 32 ON A VAR 4-25 PG274**

- 2635.22 INTERSECTED ¼ LINE 3.3' NORTH OF ¼ COR. FD OLD STAKE ON COR.  
ALSO FD STUMP OF N.W. BT & WHERE STUMP OF NE BT HAD BEEN DUG  
UP. CORRECTED VAR 4-20

**NORTH ON WEST LINE OF NW ¼ OF SEC 32 ON A VAR 7-00 PG298**

- 2652.87 INTERSECTED NORTH BOUNDARY LINE 1.32' WEST OF COR.  
CORRECTED VAR 6-58

**NORTH ON WEST LINE OF SW ¼ OF SEC 29 ON A VAR 7-00 PG 298**

- 2650.56 INTERSECTED ¼ LINE 6.6' EAST OF ¼ COR. FD OLD STAKE AT COR.  
CORRECTED VAR 7-09

**1880 LEE VOL 2 PG 312 FD STUMP OF SE. BT MON COVERED DEEP WITH DITCH. VAR  
3-50 2633.07 TO S ¼ COR SEC 29 & VAR 6-40 2653.20 TO W ¼ COR SEC 29.**

**1959 BATTERMAN VOL 4 PG 32 FD CUT STONE 4' DEEP A 1" PIPE WAS SET INSIDE OF  
A MON. BOX WHICH WAS REFERENCED WITH 1" PIPES.**

**1983 BARNES V-3 S87-38-46E 2648.76 TO S ¼ COR SEC 30.**

**1983 BARNES X-5 S0-30-27E 2654.51 TO E ¼ COR SEC 31.**

**1983 BARNES REMONUMENTATION PROJECT. S0-30-27E 2654.51 TO E ¼ COR SEC 31,  
S87-59-41E 2637.67 TO S ¼ COR SEC 29, & S87-38-46E 2648.76 TO S ¼ COR SEC 30.**

FOUND PK & 0.5' DEEP 1" PIPE IN MON. BOX. N87-40-24W 2648.74 TO S ¼ COR SEC 30,  
S88-01-39E 2637.67 TO S ¼ COR SEC 29, N0-53-27W 2653.24 TO W ¼ COR SEC 29, & S0-32-  
41E 2654.64 TO W ¼ COR SEC 32.

C) Was the corner restored through acceptance of (1) an obliterated evidence location, or, (2) a found perpetuated location?

**ACCEPTED FOUND 1" PIPE IN MONUMENT BOX.**

D) Describe any material discrepancy between the location of the corner as restored or reestablished and the location of that corner as previously restored or reestablished by distance and direction. Show the discrepancy on the plan view drawing under (a), above. Show the distances between the corner as previously restored or reestablished and (1) the corner as restored or reestablished, and (2) to at least 4 of the witness monuments shown on the drawing in (a), above.

**FD PK IS S64-38-13E 0.07 FROM CORNER.**

(E) Was the corner reestablished through lost corner proportionate methods? If so, show the method, including the directions and distances to other public land survey corners used as evidence or used for proportioning the corner location.

I, Donald Barnes, hereby certify that the corner location as identified by the corner code index was determined by me under my direction and control and that this U.S. Public Land Survey Monument Record is correct and complete to the best of my knowledge and belief.

seal

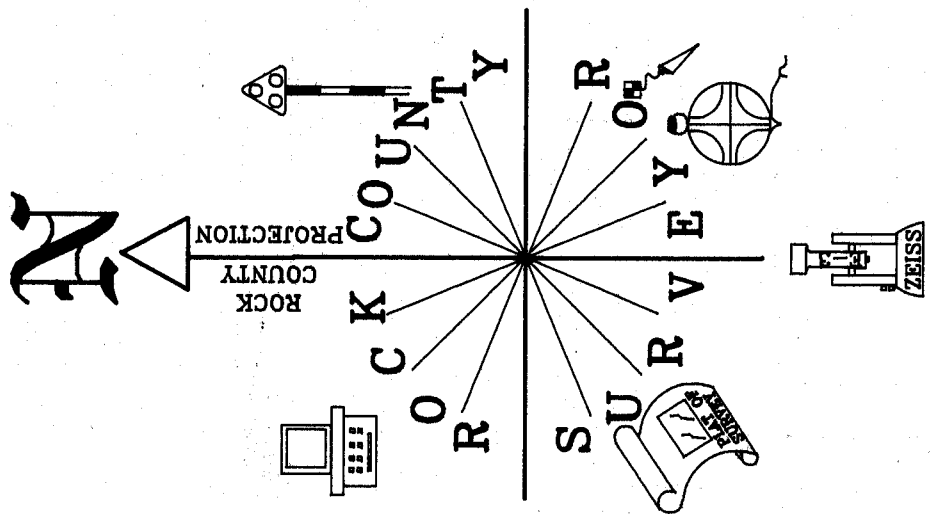
*Donald Barnes*  
emboss

*11/04/99*

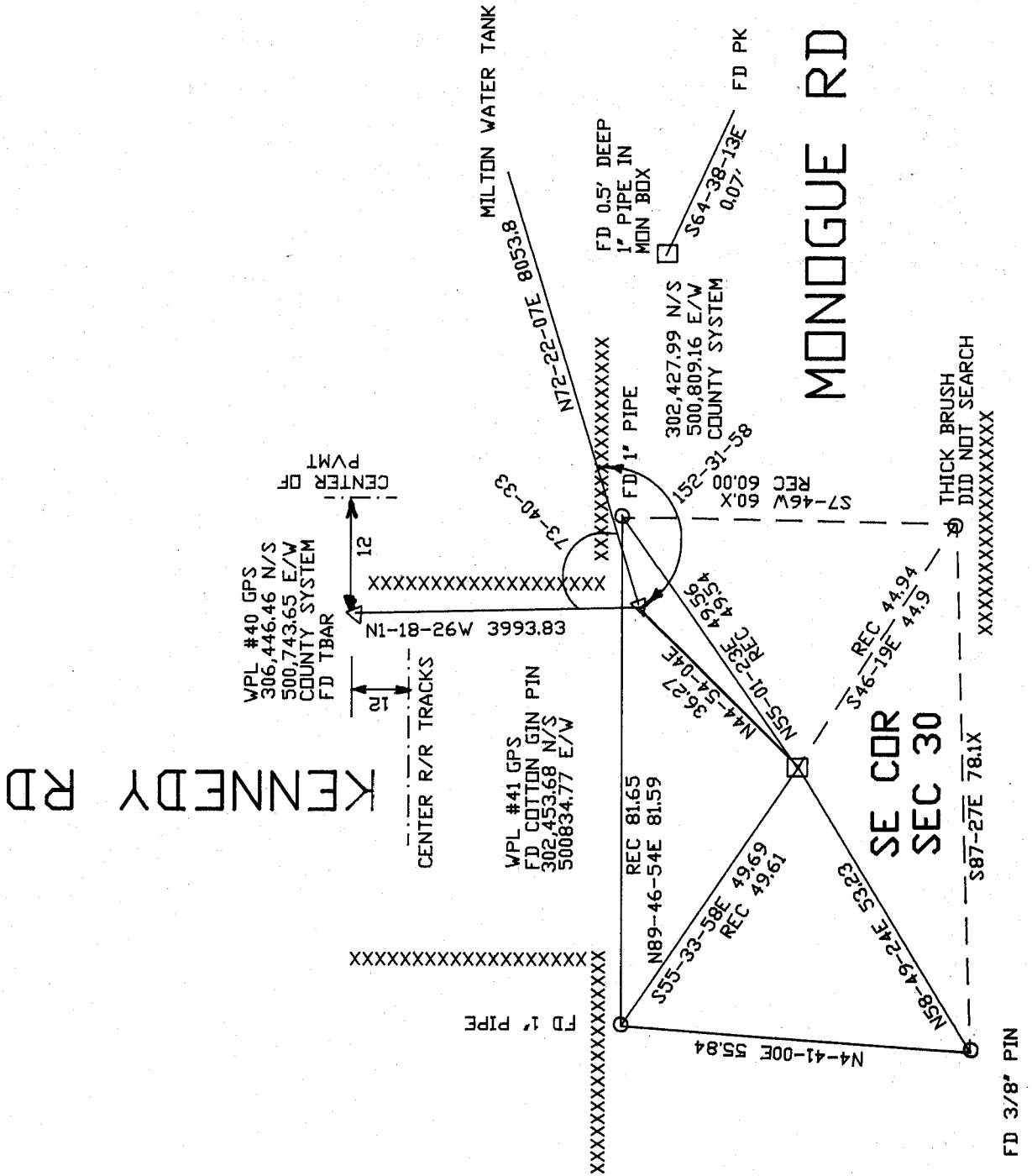
Number of included sheets 2

CORNER CODE **V-5**

A-E 7.08 REQUIREMENT



OBSERVATION SHEETS



EMBOSSED SEAL

Donald Barnes  
Oct 5 1999

V-5