

PUBLIC LAND SURVEY MONUMENT RECORD

For Public Land Survey Corners in the

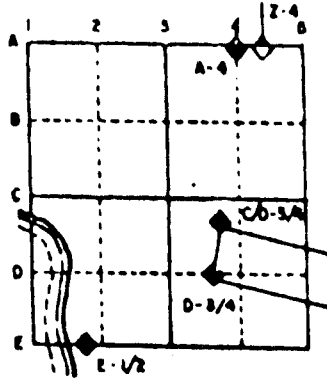
T. 3 N., R. 11 E.

CORNER CODE INDEX

	1	2	3	4	5	6	7	8	9	10	11	12	13	14	15	16	17	18	19	20	21	22	23	24	25
A	6																								
B																									
C																									
D																									
E																									
F																									
G																									
H																									
I																									
J																									
K																									
L																									
M																									
N																									
O																									
P																									
Q																									
R																									
S																									
T																									
U																									
V																									
W																									
X																									
Y																									
Z																									

PLACE MONUMENT SYMBOL (●) AT PROPER LOCATION ON ABOVE INDEX

EXAMPLE



CENTER TWP
ROCK COUNTY WI

IF AVAILABLE
STATE PLANE COORDINATES

North (Y) _____ Eleve. (Z) _____
 East (X) _____ Zone _____
 Hor. Datum _____ Vert. Datum _____

◆ CORNER MONUMENT

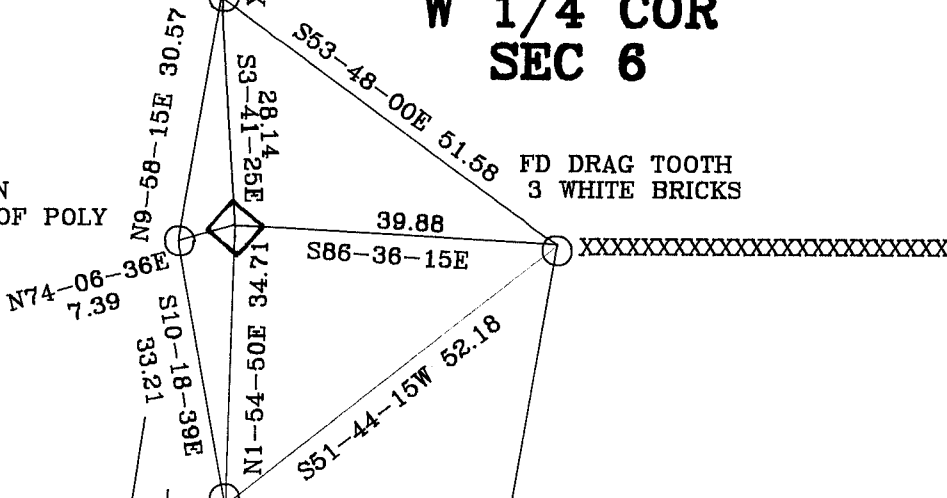
○ WITNESS MONUMENT

BEARINGS ARE BASED ON:



**W 1/4 COR
SEC 6**

CARSONITE ON
SOUTH SIDE OF POLY

FD DRAG TOOTH
3 WHITE BRICKS



MAGNOLIA TWP FB#4 PG33,36,39,45

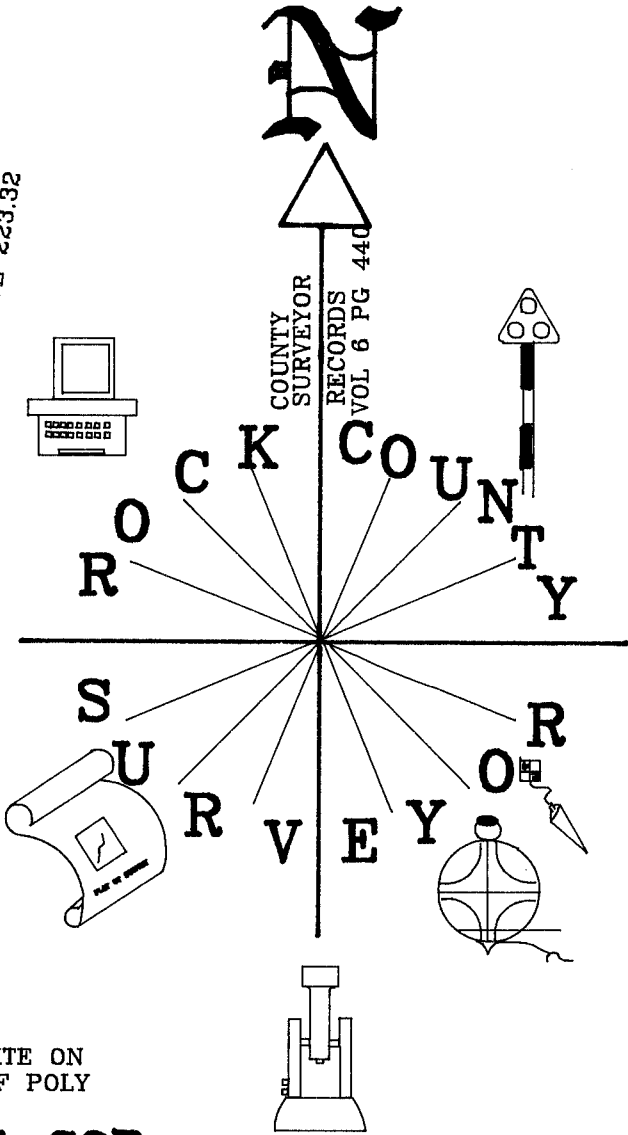
-  POLY MONUMNET
-  3/4X24 REROD WITH PLASTIC CAP

MAST S1-44-57W 8863

S2-16-19E 220.56

S0-51-15E 187.74

N9-50-27E 223.32



SET CARSONITE ON
EAST SIDE OF POLY

**E 1/4 COR
SEC 1**

N66-45-29E 16.70

MAST S1-45-05W 8636

Donald Baines
Sep 20, 1994

1 OF 4
C1

(B) Describe any record evidence, monument evidence, occupational evidence, testimonial evidence or any other material evidence you considered, and whether the monument was found or placed.

1838 ORIGINAL SURVEYOR DID NOT ESTABLISH THE CORNER. US PLAT MAP CALLS FOR 2338.38 TO NW CORNER OF SECTION 6 & 2640 TO SW CORNER.

1876 RUGER VOL 2 PG 219 DROVE STAKE. 2333.43' TO NW & 2635.05 TO SW CORNERS OF SECTION 6. USED TO SUBDIVIDE SECTION 6.

1900 BROWN VOL 2 PG 520 DRAG TOOTH SURROUNDED BY 3 WHITE BRICKS. CALLS FOR 2640 TO SW & 2337.72 TO NW CORNERS OF SECTION 6 CENTER TWP. USED TO SUBDIVIDE SECTION 6. FOUND MON AT NW CORNER OF SEC 6.

DUG AND FOUND 18" DEEP DRAG TOOTH SURROUNDED BY 3 WHITE BRICKS. REPLACED WITH POLY MONUMENT. PLACED CARSONITE 1' SOUTH OF MONUMENT. POLY IS 1.5' NORTH AND 0.1' EAST OF FENCE INTERSECTION.

C) Was the corner restored through acceptance of (1) an obliterated evidence location, or, (2) a found perpetuated location?
ACCEPTED FOUND DRAG TOOTH.

D) Describe any material discrepancy between the location of the corner as restored or reestablished and the location of that corner as previously restored or reestablished by distance and direction. Show the discrepancy on the plan view drawing under (a), above. Show the distances between the corner as previously restored or reestablished and (1) the corner as restored or reestablished, and (2) to at least 4 of the witness monuments shown on the drawing in (a), above.

(E) Was the corner reestablished through lost corner proportionate methods? If so, show the method, including the directions and distances to other public land survey corners used as evidence or used for proportioning the corner location.

NO

I, Donald Barnes, hereby certify that the corner points as identified by the corner code index were, in a field survey on, Sep 16, 1994, established, re-established, monumented, re-monumented, recovered or restored as expressed below and in conformance with the regulations and rules as required in the current manual of survey instructions of the United States Department of Interior, Bureau of Land Management.

seal

Sep 20, 1994
Donald Barnes

EMBOSS LAND SURVEYOR SEAL

COUNTY SURVEYOR FILING DATA

Date of computer entry _____

Date microfilmed _____

Number of included sheets _____
CORNER CODE

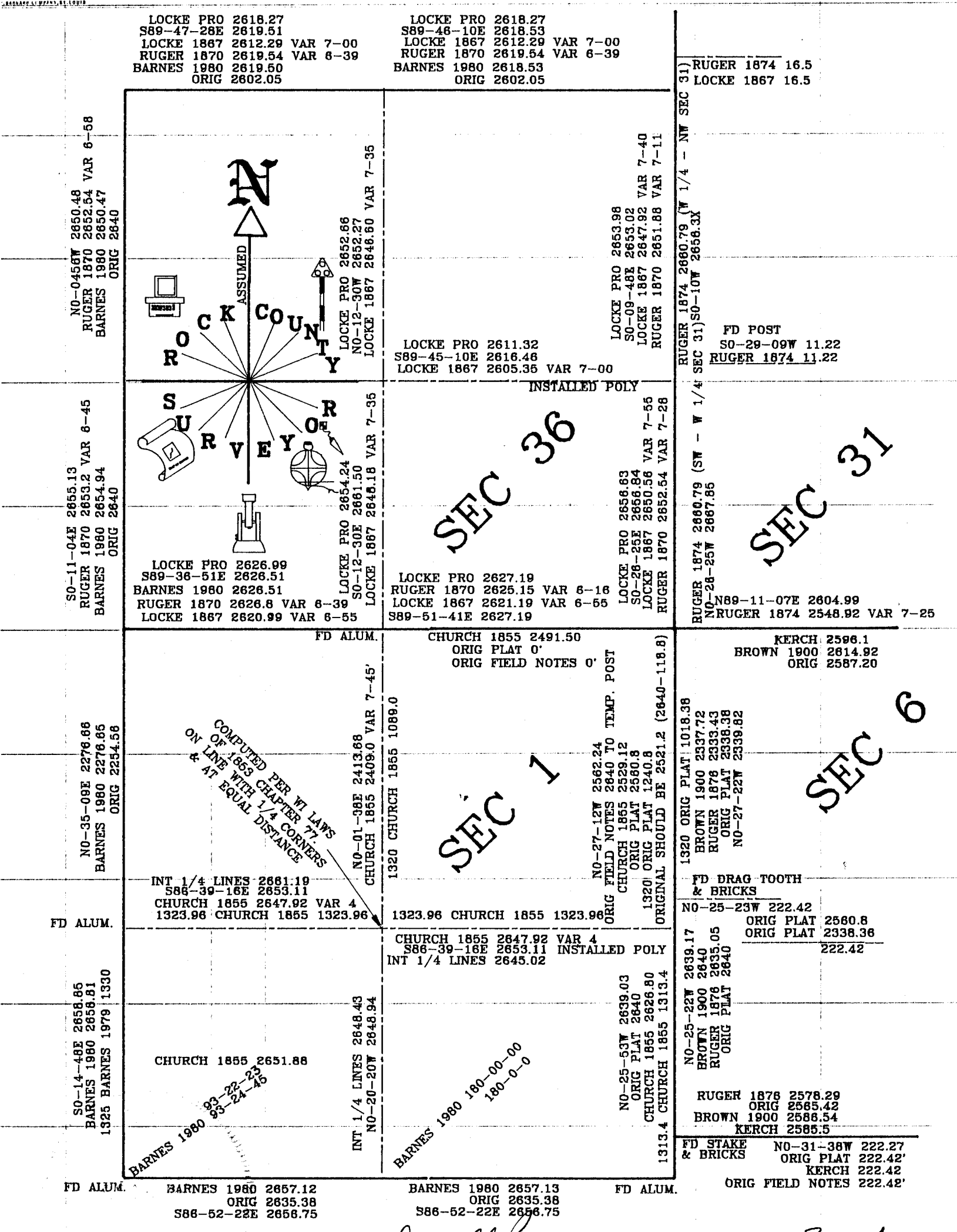
2 OF 4
C1

PLAT AND RECORD

Survey on Section 1 T 3 N. R 10 E. of the 4 P. M. in CENTER UNION MAGNOLIA Township
 County, Wisconsin, made SEPTEMBER the 19 th 1994

I hereby certify that the following is a correct record of said survey as made by me.

County Surveyor.



Don Barnes
 Sep 20, 1994

30F 4
 C1



DRAG TOOTH

Donald Banes
Sep 29, 1994

4 OF 4

C 1