

U.S. PUBLIC LAND SURVEY MONUMENT RECORD

For Public Land Survey Corners In:
T. 4 N. R. 12 E. 4th P.M.
CORNER CODE INDEX

WI ADMINISTRATIVE CODE A-E 7.08 REQUIREMENT
REV 10/23/2004 USMONREC.DWG

FULTON TWP

ROCK COUNTY WI

IF AVAILABLE
ROCK COUNTY COORDINATES PREFERRED

A	1	2	3	4	5	6	7	8	9	10	11	12	13	14	15	16	17	18	19	20	21	22	23	24	25	A
B	6																									B
C																										C
D																										D
E																										E
F																										F
G	7																									G
H																										H
J																										J
K																										K
L	18																									L
M																										M
N																										N
O																										O
P																										P
Q	19																									Q
R																										R
S																										S
T																										T
U																										U
V																										V
W																										W
X																										X
Y																										Y
Z																										Z

North _____ Elev. _____

East _____

Hor. Datum _____ Vert. Datum _____

LATITUDE _____ ELLIPS. HT. _____

LONGITUDE _____

NAD83(91) _____ NETWORK ADJ. YR _____

GPS (X) _____ TRAVERSE (X) _____

BASED ON THE FOLLOWING CONTROL:

PLACE MONUMENT SYMBOL AT PROPER LOCATION ON ABOVE INDEX

CORNER MONUMENT

WITNESS MONUMENT

BEARINGS ARE BASED ON: _____

FIELD BOOK _____ PAGE # _____

SHEET 1 OF 2

SHOW A PLAN VIEW DRAWING DEPICTING THE CORNER MONUMENT AND SURROUNDING PHYSICAL FEATURES, INCLUDING THE EXCAVATION AREA AND DEPTH.

PLANNING & ZONING COMMITTEE ADOPTED THIS FORM ON 12/2/1982

CORNER CODE C-1

FU514

(B) Describe any record evidence, monument evidence, occupational evidence, testimonial evidence or any other material evidence you considered, and whether the monument was found or placed.

1833 (SEP 20) MULLETT & BRINK NORTH ON EAST SIDE SECTION 1
1372.14 BUR OAK 12 IN DIAMETER
2640 SET QUARTER SECTION POST BUR OAK 14 S19W
22.44' BUR OAK 12 N4N 48.18'
5280 SET POST CORNER TO TOWNSHIPS 4 & 5 N
RANGES 11 & 12E BEARINGS {BUR OAK 12 N33E
24.42' BUR OAK 16 N77W 3.3'} MARKED {BUR OAK
18 S26E BUR OAK 18 S62W LAND LEVEL FIRST RATE
1865 LOCKE VOL 1 PG 226 & #1065 FD S. BT, 2686.04 TO GEN
SEC 6 & 5373.88 TO E 1/4 COR SEC 6
1874 RUGER VOL 2 PG 128 FD OLD STAKE & HH STONE ON THE
W. SIDE OF IT. ALSO FD WHERE STUMP OF BTS HAD BEEN
DUG UP. SET LIMESTONE 24X8X6 VAR 8-02 2552.22 TO
CENTER SEC 6, & 5250.3 TO W 1/4 COR SEC 6
1886 RUGER VOL 2 PG 284 FD LIMESTONE SET BY SELF IN
FORMER SURVEY VAR 5-30 2659.30 TO SW COR SEC 6,
2554.86 TO GEN SEC 1
1971 LEE VOL 4 PG 508 DUG & FD LS 24X8X6. REF. SAME. USGS
BM IS NEAR A REF MON. FD W 1/16TH COR OF SW 1/4 OF SEC 6.
1999 NORTHROP CSM VOL 22 PG 453 FD R/R SPIKE @ E 1/4 COR
SEC 1 PORTER TWP, 2699.26 TO NE COR SEC 1, ANGLE 92-
35-03 @ E 1/4 COR SEC 1 PORTER TWP FROM E/W 1/4 LINE SEC
1 TO NE COR SEC 1

FD BENT R/R SPIKE WITH "X" LEANING TO THE EAST & ALL 4
REFERENCE MONUMENTS. INTERSECTION OF RECORD DISTANCES TO
REFERENCE MONUMENTS IS IN HARMONY WITH CALL DISTANCES
AND R/R SPIKE.

C) Was the corner restored through acceptance of (1) an obliterated evidence location, or, (2) a found perpetuated location?

ACCEPTED OBLITERATED EVIDENCE LOCATION. INTERSECTION OF
RECORD DISTANCES IS IN HARMONY WITH ALL RECORD DISTANCES
AND WITH BENT R/R.

D) Describe any material discrepancy between the location of the corner as restored or reestablished and the location of that corner as previously restored or reestablished by distance and direction. Show the discrepancy on the plan view drawing under (a), above. Show the distances between the corner as previously restored or reestablished and (1) the corner as restored or reestablished, and (2) to at least 4 of the witness monuments shown on the drawing in (a), above.

(E) Was the corner reestablished through lost corner proportionate methods? If so, show the method, including the directions and distances to other public land survey corners used as evidence or used for proportioning the corner location.

I, **Donald Barnes**, hereby certify that the corner location as identified by the corner code index was determined by me under my direction and control and that this U.S. Public Land Survey Monument Record is correct and complete to the best of my knowledge and belief.

Seal

 Donald Barnes

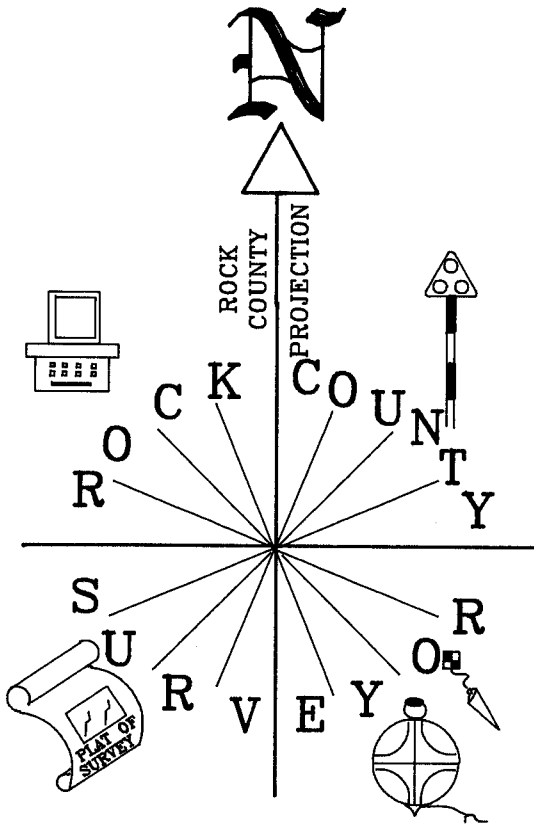
5-09-2006

SHEET 1 OF 2

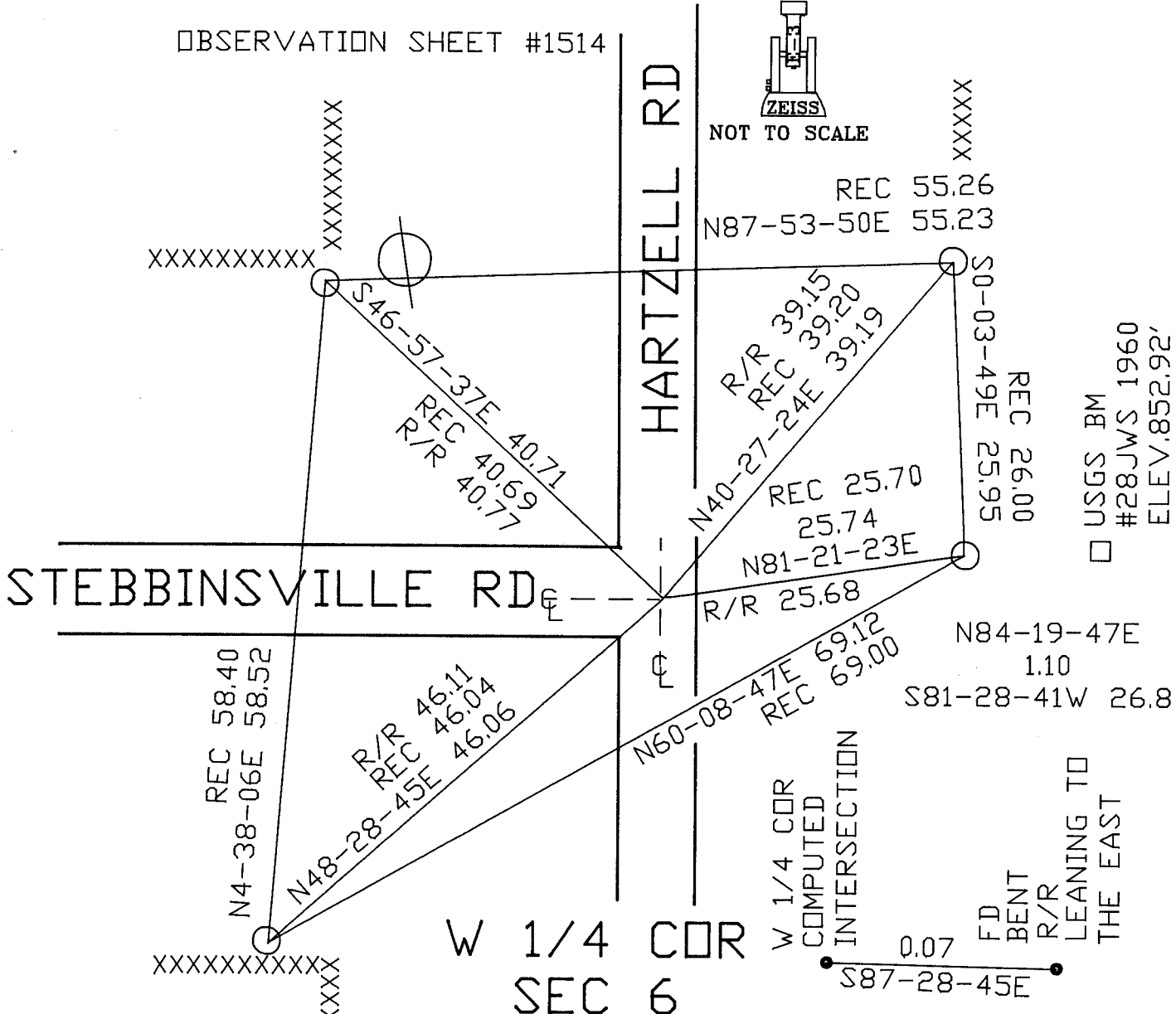
CORNER CODE

C-1

A.E. 7.08 REQUIREMENT



OBSERVATION SHEET #1514



STEBBINSVILLE RD

HARTZELL RD

W 1/4 COR
SEC 6

W 1/4 COR
COMPUTED
INTERSECTION

USGS BM
#28JWS 1960
ELEV. 852.92

FD BENT
R/R
LEANING TO
THE EAST

EMBOSSSED
SEAL

Donald Barnes
5-09-06

SHEET 2 OF 2

C-1