

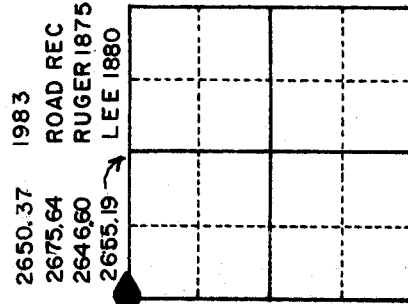
U.S. PUBLIC LAND SURVEY MONUMENT RECORD

For Public Land Survey Corners in
FULTON TWP. T. A N., R. 12 E.

For Miscellaneous Corners within
 Sec. 19, T. 4 N., R. 12 E.

CORNER CODE INDEX

	1	2	3	4	5	6	7	8	9	10	11	12	13	14	15	16	17	18	19	20	21	22	23	24	25
A																									
B																									
C	6																								
D		5																							
E			4																						
F				3																					
G					2																				
H																									
J																									
K																									
L																									
M	18																								
N		17																							
O			16																						
P				15																					
Q					14																				
R						13																			
S																									
T	19																								
U		20																							
V			21																						
W				22																					
X					23																				
Y						24																			
Z							25																		
								26																	
									27																
										28															
											29														
												30													
													31												
														32											
															33										
																34									
																	35								
																		36							



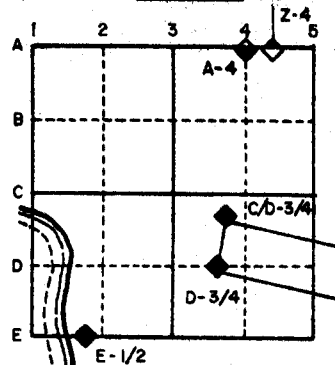
1. Above code numbers are positioned Meander, Claim, or Fractional corners of the section.
2. Township corner code numbers shall be applied to the corners of above typical section.

PLACE MONUMENT SYMBOL (◆) AT PROPER LOCATION ON ABOVE INDEX

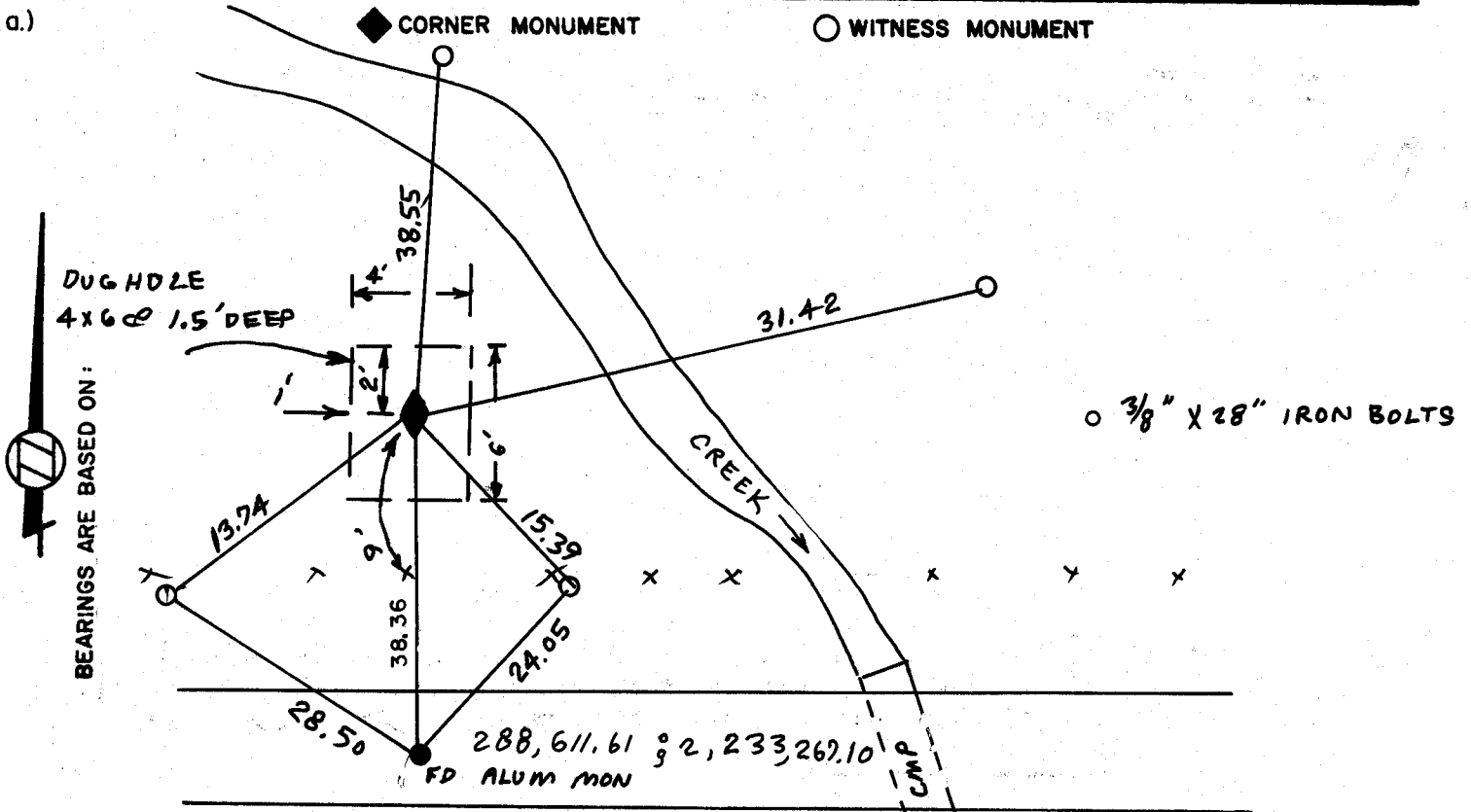
IF AVAILABLE
 STATE PLANE COORDINATES

North (Y) 288,649.96 Eleve. (Z) _____
 East (X) 2,233,266.80 Zone _____
 Hor. Datum _____ Vert. Datum _____

EXAMPLE



(a.) ◆ CORNER MONUMENT ○ WITNESS MONUMENT



FIELD BOOK _____ PAGE # 38

MICROFILMED

SHOW A PLAN VIEW DRAWING DEPICTING THE CORNER MONUMENT AND SURROUNDING PHYSICAL FEATURES, INCLUDING THE EXCAVATION AREA AND DEPTH. THE CORNER MONUMENT SHALL HAVE THE FOLLOWING CHARACTERISTICS: 1) HAVE AT LEAST TWO PREDETERMINED BREAK-OFF POINTS. 2) IF BROKEN, LEAVE A PERMANENTLY MAGNETIZED REMNANT AT THE ORIGINAL POINT. 3) MUST BE EXTENDABLE. 4) THE CAP IS INSCRIBED: ROCK COUNTY SURVEY MONUMENT - PENALTY FOR DISTURBING MARKER. 5) OR AN EXISTING CUT LIMESTONE. AN IRON PIPE 1 1/2" x 4" (MINIMUM) MAY BE USED IN AREAS WHERE GROUND WATER IS WITHIN ONE FOOT OF THE SURFACE. IF THE CORNER IS OCCUPIED BY AN IMPROVEMENT (MANHOLE, BURIED CABLE, ETC.) ANY DURABLE, DISTINCT MONUMENT MAY BE USED. CORNERS SHALL BE REFERENCED WITH AT LEAST 4 DURABLE WITNESS MONUMENTS. WITNESS MONUMENTS SHALL BE MADE OF CONCRETE, NATURAL STONE, IRON OR OTHER EQUALLY DURABLE MATERIAL, EXCEPT WOOD. DESCRIBE THE CORNER AND THE WITNESS MONUMENTS.

CORNER CODE: R1

- (b.) Describe any record evidence, monument evidence, occupational evidence, testimonial evidence or any other material evidence you considered, and whether the monument was found or placed.
1. VOL2 PG 200 County Surveyor's records survey by Ruger 1875
 2. VOL2 PG 315 County Surveyor's records survey by Lee 1880
 3. Road records. Porter Twp page 3829
 4. Original government field notes
 5. Occupation lines

(c.) Was the corner restored through acceptance of (1) an obliterated evidence location, or, (2) a found perpetuated location?

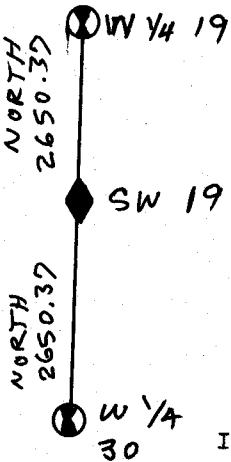
NO

(d.) Describe any material discrepancy between the location of the corner as restored or reestablished and the location of that corner as previously restored or reestablished by distance and direction. Show the discrepancy on the plan view drawing under (a), above. Show the distances between the corner as previously restored or reestablished and (1) the corner as restored or reestablished, and (2) to at least 4 of the witness monuments shown on the drawing in (a), above.

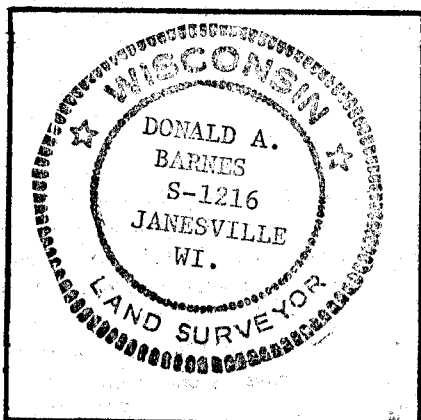
SEE ADDITIONAL PAGE

(e.) Was the corner reestablished through lost corner proportionate methods? If so, show the method, including the directions and distances to other public land survey corners used as evidence or used for proportioning in determining the corner location.

YES



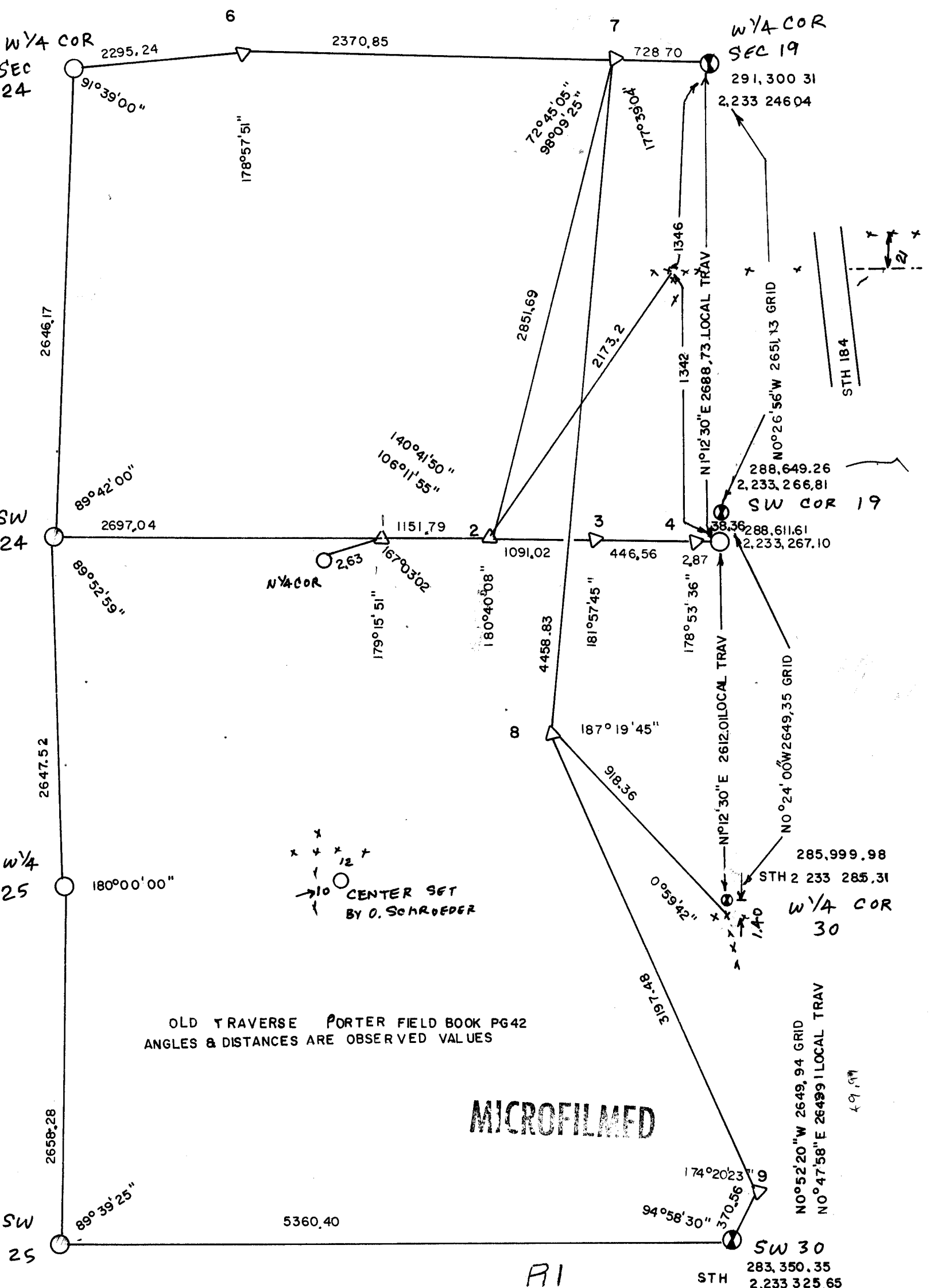
I, Donald Barnes, hereby certify that the corner points as identified by the corner code index were, in a field survey on April 6, 1983, established, re-established, monumented, re-monumented, recovered or restored as expressed below and in conformance with the regulations and rules as required in the current manual of survey instructions of the United States Department of Interior, Bureau of Land Management.



COUNTY SURVEYOR FILING DATA

Date of Computer Entry _____
 Date Received _____
 Date Microfilmed OCT 15, 1984
 Treasurer's Receipt No. _____
 Number of Included Sheets 1

AFFIX YOUR LAND SURVEYOR SEAL. R1



OLD TRAVERSE PORTER FIELD BOOK PG 42
 ANGLES & DISTANCES ARE OBSERVED VALUES

MICROFILMED

NO°52'20"W 2649.94 GRID
 NO°47'58"E 26499.1 LOCAL TRAV

AI

49.97

STH 283,350.35
 2,233 325.65

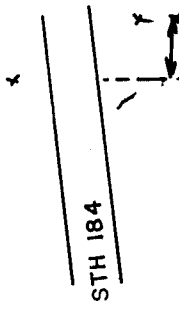
WYA COR
 SEC 30

STH 2 233 285.31

NO°24'00"W 2649.35 GRID

NO°26'56"W 2651.13 GRID

SW COR 19
 288,649.26
 2,233,266.81



WYA COR
 SEC 19
 291,300 31
 2,233 246.04

WYA COR
 SEC 24
 2295.24
 2370.85
 728.70

SW COR 24
 2646.17
 89°42'00"
 2697.04
 89°52'59"

WYA COR
 SEC 25
 180°00'00"

SW COR 25
 2658.28
 89°39'25"
 5360.40

NYA COR
 2.63
 167°03'02"
 179°15'51"
 1151.79
 180°40'08"
 1091.02

72°45'05"
 98°09'25"
 2851.69
 2173.2
 1346
 1342
 40°30'11"

3
 446.56
 181°57'45"
 187°19'45"
 4458.83
 918.36

4
 287
 178°53'36"
 288.611.61
 2,233,267.10

N°12'30"E 2612.0 LOCAL TRAV
 N°12'30"E 2688.73 LOCAL TRAV
 N°02'20"E 2649.94 GRID

0°59'42"
 140

174°20'23"
 94°58'30"
 370.56