

# U.S. PUBLIC LAND SURVEY MONUMENT RECORD

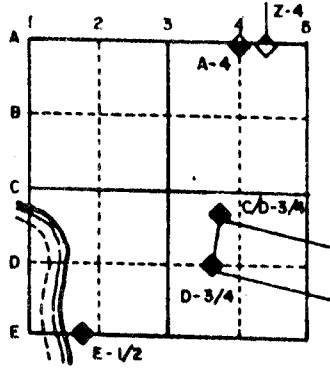
For Public Land Survey Corners in the  
T. 4 N., R. 12 E.

## CORNER CODE INDEX

	1	2	3	4	5	6	7	8	9	10	11	12	13	14	15	16	17	18	19	20	21	22	23	24	25
A																									
B																									
C																									
D																									
E																									
F																									
G																									
H																									
I																									
J																									
K																									
L																									
M																									
N																									
O																									
P																									
Q																									
R																									
S																									
T																									
U																									
V																									
W																									
X																									
Y																									
Z																									

PLACE MONUMENT SYMBOL (◆) AT PROPER  
LOCATION ON ABOVE INDEX

### EXAMPLE



FULTON TWP  
ROCK COUNTY WI

IF AVAILABLE  
STATE PLANE COORDINATES

North (Y) \_\_\_\_\_ Eleve. (Z) \_\_\_\_\_  
 East (X) \_\_\_\_\_ Zone \_\_\_\_\_  
 Hor. Datum \_\_\_\_\_ Vert. Datum \_\_\_\_\_

(a.)

◆ CORNER MONUMENT

○ WITNESS MONUMENT



FIELD BOOK \_\_\_\_\_ PAGE # \_\_\_\_\_

## MICROFILMED

SHOW A PLAN VIEW DRAWING DEPICTING THE CORNER MONUMENT AND SURROUNDING PHYSICAL FEATURES, INCLUDING THE EXCAVATION AREA AND DEPTH. THE CORNER MONUMENT SHALL HAVE THE FOLLOWING CHARACTERISTICS: 1) HAVE AT LEAST TWO PREDETERMINED BREAK-OFF POINTS. 2) IF BROKEN, LEAVE A PERMANENTLY MAGNETIZED REMNANT AT THE ORIGINAL POINT. 3) MUST BE EXTENDABLE. 4) THE CAP IS INSCRIBED: ROCK COUNTY SURVEY MONUMENT - PENALTY FOR DISTURBING MARKER. 5) OR AN EXISTING CUT LIMESTONE. AN IRON PIPE 1 1/2" x 4'0" (MINIMUM) MAY BE USED IN AREAS WHERE GROUND WATER IS WITHIN ONE FOOT OF THE SURFACE. IF THE CORNER IS OCCUPIED BY AN IMPROVEMENT (MANHOLE, BURIED CABLE, ETC.) ANY DURABLE, DISTINCT MONUMENT MAY BE USED. CORNERS SHALL BE REFERENCED WITH AT LEAST 4 DURABLE WITNESS MONUMENTS. WITNESS MONUMENTS SHALL BE MADE OF CONCRETE, NATURAL STONE, IRON OR OTHER EQUALLY DURABLE MATERIAL, EXCEPT WOOD. DESCRIBE THE CORNER AND THE WITNESS MONUMENTS.

CORNER CODE:

L 1

(B) Describe any record evidence, monument evidence, occupational evidence, testimonial evidence or any other material evidence you considered, and whether the monument was found or placed.

1833 ORIGINAL SURVEYOR SET QUARTER SECTION POST, BURR OAK 20 S48W 87.78', BUR OAK 10 N36W 125.40'. CALLS FOR 2640 TO SE AND NE CORNERS OF SECTION 13 PORTER TOWNSHIP.

1968 LEE MAP #01281 CONSIDERED LOST AND WAS ESTABLISHED BY SINGLE PROPORTIONATE MEASUREMENT BETWEEN THE NW AND SW CORNERS OF SECTION 18. CALLS FOR 2656.77 TO THE SW AND NW CORNERS.

1968 LEE CSM VOL 3 PG 167. USED CORNER FOR SURVEY.

1973 LEE MAP #01286 CALLS FOR PIPE AND ON LINE WITH THE NW AND SW CORNERS OF SECTION 18. CALLS FOR 2657.38 TO THE NW, 2657.35 TO THE SW CORNER, 2687.82 TO THE CENTER, AND 5330.02 TO THE E 1/4 CORNER OF SECTION 18.

1978 BARNES VOL 5 PG 115 FOUND 1" PIPE WITH CAP (RLS 181) AND REFERENCED SAME.

1978 BARNES MAP #13772 USED CORNER FOR A SURVEY IN SECTION 18.

1978 BARNES MAP #1275 USED CORNER FOR A SURVEY IN SECTION 18.

1981 BARNES VOL 6 PG 201 FOUND 1" PIPE AND REPLACED SAME WITH ALUMINUM MONUMENT AND REFERENCED SAME.

1987 NORTHRUP CSM VOL 12 PG 588. USED CORNER FOR THE SURVEY.

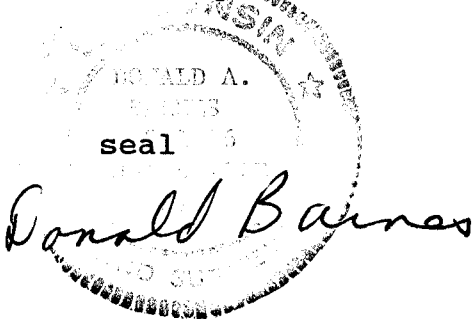
FOUND ALUMINUM MONUMENT.

C) Was the corner restored through acceptance of (1) an obliterated evidence location, or, (2) a found perpetuated location?  
ACCEPTED FOUND MONUMENT.

D) Describe any material discrepancy between the location of the corner as restored or reestablished and the location of that corner as previously restored or reestablished by distance and direction. Show the discrepancy on the plan view drawing under (a), above. Show the distances between the corner as previously restored or reestablished and (1) the corner as restored or reestablished, and (2) to at least 4 of the witness monuments shown on the drawing in (a), above.

(E) Was the corner reestablished through lost corner proportionate methods? If so, show the method, including the directions and distances to other public land survey corners used as evidence or used for proportioning the corner location.

I, Donald Barnes, hereby certify that the corner points as identified by the corner code index were, in a field survey on, September 16 1992, established, re-established, monumented, re-monumented, recovered or restored as expressed below and in conformance with the regulations and rules as required in the current manual of survey instructions of the United States Department of Interior, Bureau of Land Management.



AFFIX YOUR LAND SURVEYOR SEAL

COUNTY SURVEYOR FILING DATA

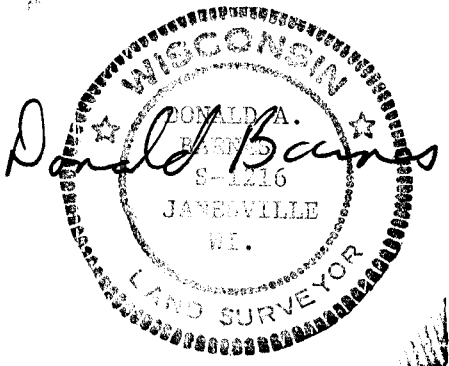
Date of computer entry \_\_\_\_\_

Date microfilmed \_\_\_\_\_

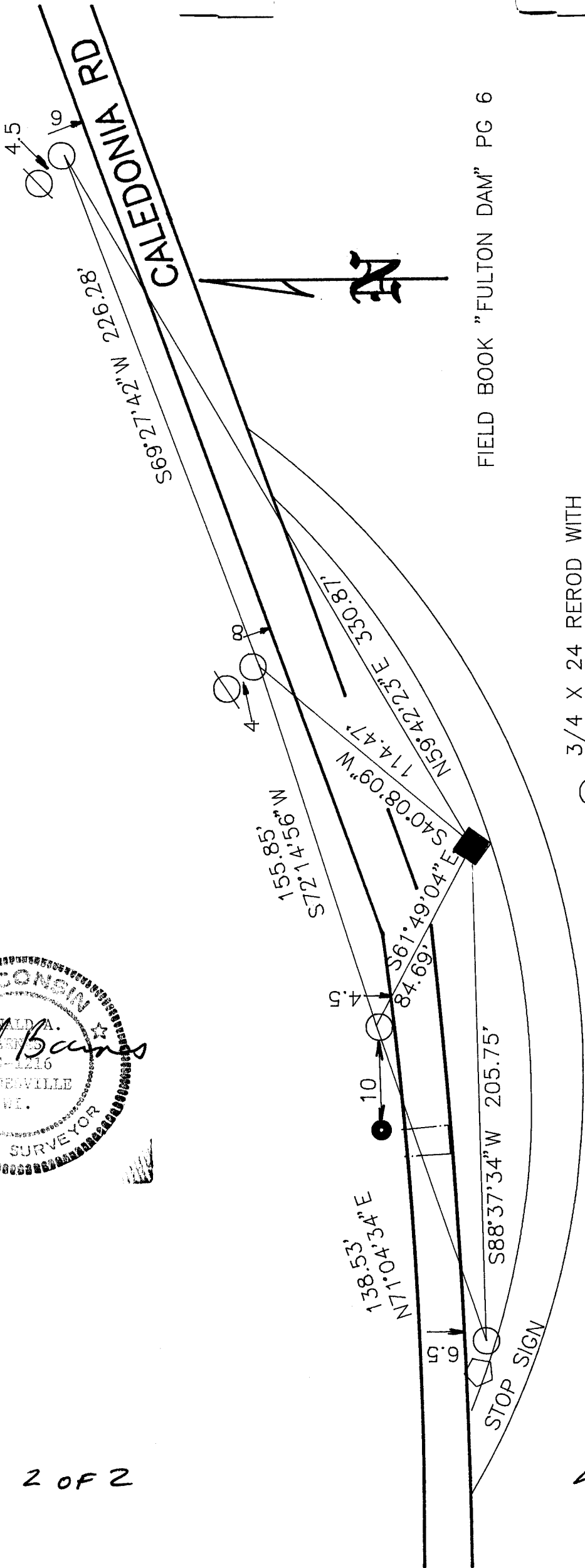
Number of included sheets 1  
CORNER CODE \_\_\_\_\_

1 OF 2

21



2 OF 2



FIELD BOOK "FULTON DAM" PG 6

3/4 X 24 REROD WITH

○ PLASTIC CAP

◆ FD ALUM. MON.

11