

**U.S. PUBLIC LAND SURVEY MONUMENT RECORD**

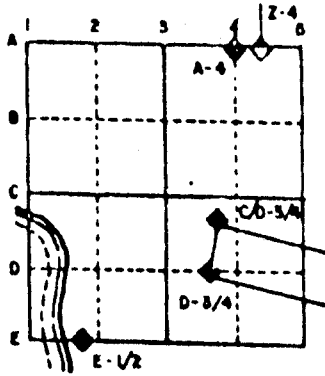
For Public Land Survey Corners in the  
T. 3 N., R. 11 E.

**CORNER CODE INDEX**

	1	2	3	4	5	6	7	8	9	10	11	12	13	14	15	16	17	18	19	20	21	22	23	24	25
A																									
B																									
C	6																								
D		5																							
E			4																						
F				3																					
G					2																				
H																									
I																									
J																									
K																									
L																									
M																									
N																									
O																									
P																									
Q																									
R																									
S																									
T																									
U																									
V																									
W																									
X																									
Y																									
Z																									

PLACE MONUMENT SYMBOL (◆) AT PROPER LOCATION ON ABOVE INDEX

**EXAMPLE**



CENTER TWP  
ROCK COUNTY WI

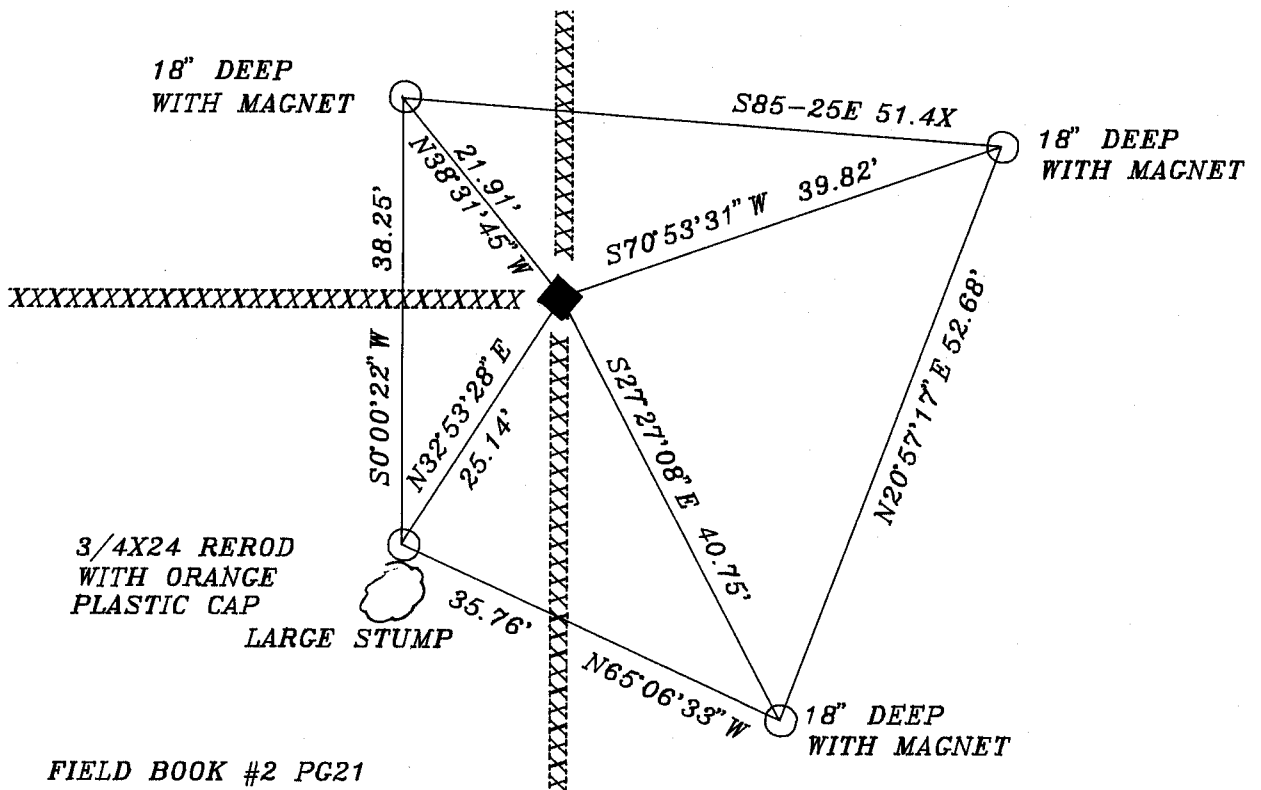
IF AVAILABLE  
STATE PLANE COORDINATES

North (Y) \_\_\_\_\_ Eleve. (Z) \_\_\_\_\_  
 East (X) \_\_\_\_\_ Zone \_\_\_\_\_  
 Hor. Datum \_\_\_\_\_ Vert. Datum \_\_\_\_\_

◆ CORNER MONUMENT

○ WITNESS MONUMENT

BEARINGS ARE BASED ON: ASSUMED



FIELD BOOK #2 PG21  
 FOUND CAST IRON MONUMENT  
 PLACED CARSONITE POST NEXT TO MONUMENT

**MICROFILMED**

SHEET \_\_\_ OF \_\_\_

CORNER CODE: N 15

(B) Describe any record evidence, monument evidence, occupational evidence, testimonial evidence or any other material evidence you considered, and whether the monument was found or placed.

1875 RUGER VOL 2 PG 183 FOUND REMAINS OF OLD STAKE AND HH JUST WEST AND LIMESTONE JUST EAST. DROVE NEW STAKE IN PLACE OLD ONE AND SURROUNDED IT WITH 4 HH STONES.

1905 RUGER VOL 5 PG 324 FOUND CORNER AS SET BY SELF IN SECTION 15. USED TO SUBDIVIDE SECTION 22. 2655.92 TO CENTER OF SECTION 22.

1968 BATTERMAN JR. FOUND HH. SET 1" PIPE. FOUND STAKE SURROUNDED BY 3 HARDHEADS AT 1/16TH CORNER TO THE WEST. SET 1" PIPE. БЕЛОИТ RECORDS,"SET C.I. IN PLACE OF PIPES.

196? H. LEE VOL 5 PG 467 CALLS FOR NAD(27) COORDINATES OF 262,032.48;2,220,243.53.

1984 H. LEE CSM V11 PG 568 CALLS FOR CAST IRON MONUMENT AND 2667.18 TO CENTER OF SECTION 15.

1990 N. LEE MAP#2660 FOUND CAST IRON MONUMENT 8" BELOW GRADE, 3+/- SOUTH OF WOOD FENCE POST. CALLS FOR 2679.15 TO NE CORNER, 2680.66 TO NW CORNER, AND 2653.69 TO INTERSECTION OF 1/4 LINES OF SECTION 22.

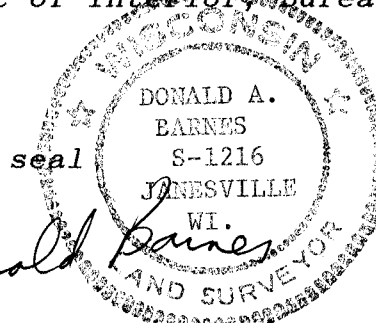
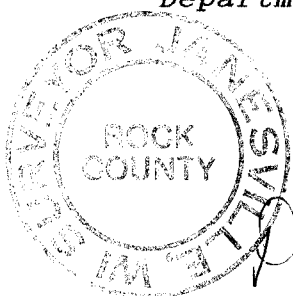
FOUND CAST IRON MONUMENT.

C) Was the corner restored through acceptance of (1) an obliterated evidence location, or, (2) a found perpetuated location?

D) Describe any material discrepancy between the location of the corner as restored or reestablished and the location of that corner as previously restored or reestablished by distance and direction. Show the discrepancy on the plan view drawing under (a), above. Show the distances between the corner as previously restored or reestablished and (1) the corner as restored or reestablished, and (2) to at least 4 of the witness monuments shown on the drawing in (a), above.

(E) Was the corner reestablished through lost corner proportionate methods? If so, show the method, including the directions and distances to other public land survey corners used as evidence or used for proportioning the corner location.

I, Donald Barnes, hereby certify that the corner points as identified by the corner code index were, in a field survey on, ~~October~~ **SEP 25 1990**, established, re-established, monumented, re-monumented, recovered or restored as expressed below and in conformance with the regulations and rules as required in the current manual of survey instructions of the United States Department of Interior, Bureau of Land Management.



COUNTY SURVEYOR FILING DATA

Date of computer entry \_\_\_\_\_

Date microfilmed \_\_\_\_\_

Number of included sheets \_\_\_\_\_  
CORNER CODE

AFFIX YOUR LAND SURVEYOR SEAL

N 15