

U.S. PUBLIC LAND SURVEY MONUMENT RECORD

For Public Land Survey Corners in the

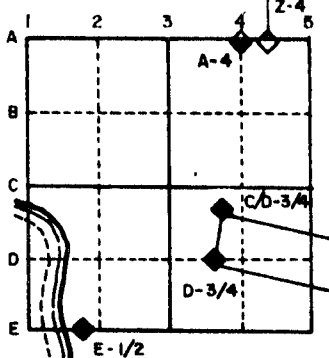
T. 4 N., R. 13 E.

CORNER CODE INDEX

	1	2	3	4	5	6	7	8	9	10	11	12	13	14	15	16	17	18	19	20	21	22	23	24	25
A																									
B																									
C																									
D																									
E																									
F																									
G																									
H																									
J																									
K																									
L																									
M																									
N																									
O																									
P																									
Q																									
R																									
S																									
T																									
U																									
V																									
W																									
X																									
Y																									
Z																									

PLACE MONUMENT SYMBOL (◆) AT PROPER LOCATION ON ABOVE INDEX

EXAMPLE



MILTON TWP
ROCK COUNTY WI

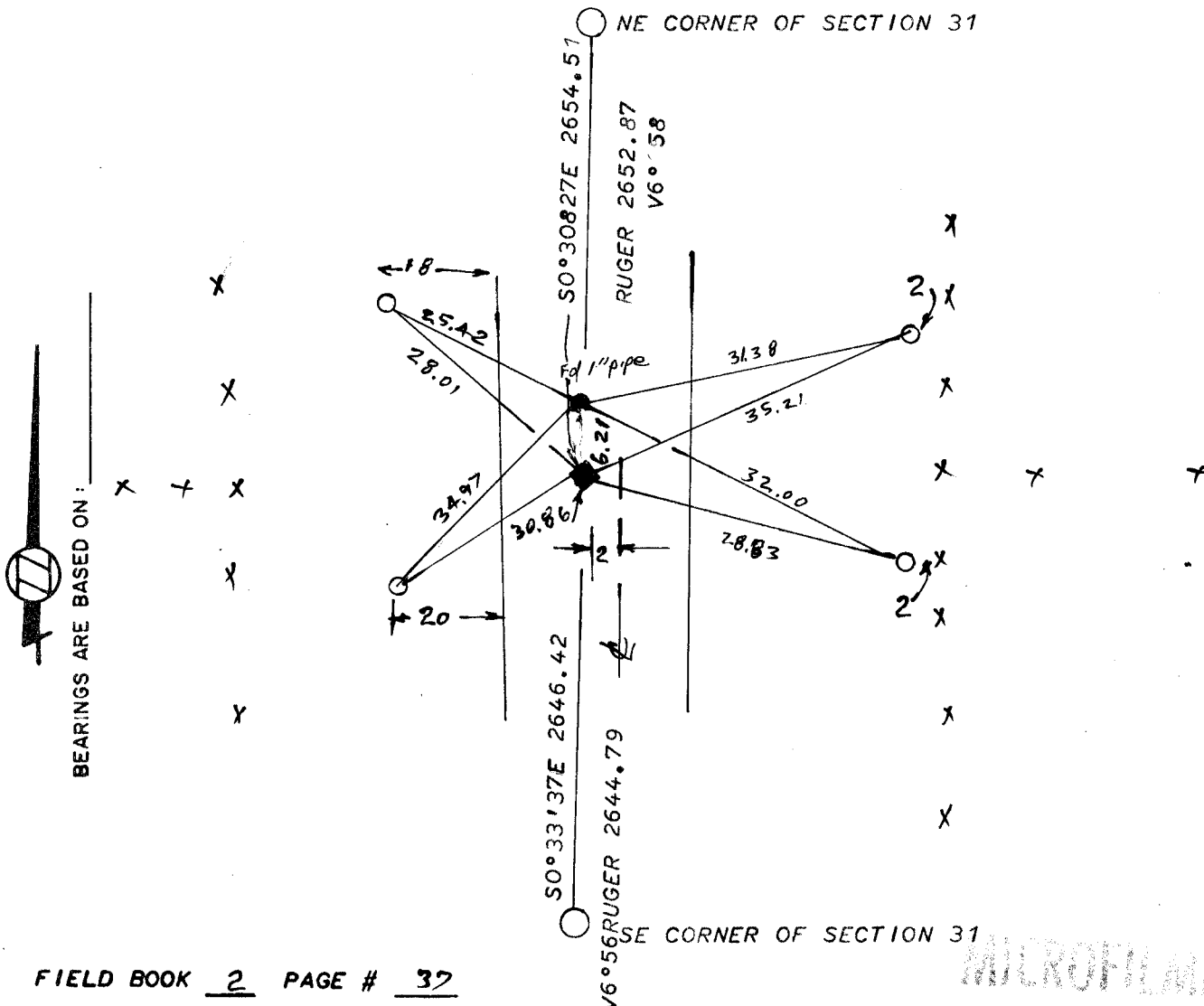
IF AVAILABLE
STATE PLANE COORDINATES

North (Y) _____ Eleve. (Z) _____
 East (X) _____ Zone _____
 Hor. Datum _____ Vert. Datum _____

(a.)

◆ CORNER MONUMENT
POLY MON

○ WITNESS MONUMENT
3/4"X26" IRON BOLTS



FIELD BOOK 2 PAGE # 37

MICROFILMED

SHOW A PLAN VIEW DRAWING DEPICTING THE CORNER MONUMENT AND SURROUNDING PHYSICAL FEATURES, INCLUDING THE EXCAVATION AREA AND DEPTH. THE CORNER MONUMENT SHALL HAVE THE FOLLOWING CHARACTERISTICS: 1) HAVE AT LEAST TWO PREDETERMINED BREAK-OFF POINTS. 2) IF BROKEN, LEAVE A PERMANENTLY MAGNETIZED REMNANT AT THE ORIGINAL POINT. 3) MUST BE EXTENDABLE. 4) THE CAP IS INSCRIBED: ROCK COUNTY SURVEY MONUMENT - PENALTY FOR DISTURBING MARKER. 5) OR AN EXISTING CUT LIMESTONE. AN IRON PIPE 1 1/2" x 4'0" (MINIMUM) MAY BE USED IN AREAS WHERE GROUND WATER IS WITHIN ONE FOOT OF THE SURFACE. IF THE CORNER IS OCCUPIED BY AN IMPROVEMENT (MANHOLE, BURIED CABLE, ETC.) ANY DURABLE, DISTINCT MONUMENT MAY BE USED. CORNERS SHALL BE REFERENCED WITH AT LEAST 4 DURABLE WITNESS MONUMENTS. WITNESS MONUMENTS SHALL BE MADE OF CONCRETE, NATURAL STONE, IRON OR OTHER EQUALLY DURABLE MATERIAL, EXCEPT WOOD. DESCRIBE THE CORNER AND THE WITNESS MONUMENTS.

CORNER CODE: X-5

- (b.) Describe any record evidence, monument evidence, occupational evidence, testimonial evidence or any other material evidence you considered, and whether the monument was found or placed.
1. 1836 BURNHAM SET THE ORIGINAL WOOD STAKE.
 2. 1871 RUGER FOUND STAKE & STUMP OF SE BT AND WHERE STUMP OF NW BT WAS DUG UP. SET CUT LIMESTONE.
 3. 1895 BLEEDHORN USED THE CORNER TO SUBDIVIDE THE SECTION.
 4. 1973 HAROLD COMBS (CSM VOL 3 PAGE 45) DEPICTS THE EAST LINE OF THE NE 1/4 OF SEC 31.

THE TERRAIN INDICATES A MAJOR EXCAVATION FOR THE ROAD. THE CUT LIMESTONE WAS PROBABLY DESTROYED. HAROLD COMBS' FIELD NOTES INDICATES DIFFERENT RECORD DISTANCES FOR RUGER. RUGER'S FIELD NOTES INDICATES THE CORNER IS NOT ON A STRAIGHT LINE BETWEEN THE NE & SE CORNERS OF THE SECTION. I PRORATED WITH RUGER'S RECORD DISTANCES AND KEPT ON LINE WITH THE FOUND PIPE. THIS WAS IN HARMONY EAST & WEST WITH SURVEYS TIED TO THE PIPE AND ALSO THE DIFFERENCE IN VARIANCE THAT RUGER SHOWED. THE CORNER IS ALSO ON LINE WITH THE E/W FENCES.

- (c.) Was the corner restored through acceptance of (1) an obliterated evidence location, or, (2) a found perpetuated location?

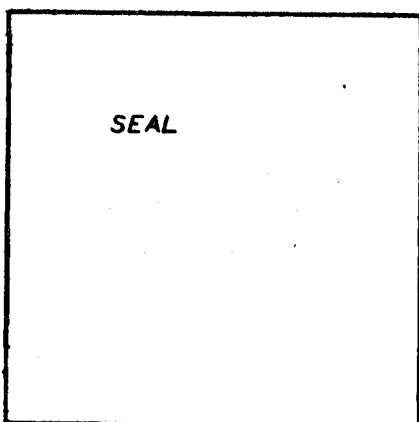
THE CORNER WAS RESTORED THROUGH THE USE OF OBLITERATED EVIDENCE.

- (d.) Describe any material discrepancy between the location of the corner as restored or reestablished and the location of that corner as previously restored or reestablished by distance and direction. Show the discrepancy on the plan view drawing under (a), above. Show the distances between the corner as previously restored or reestablished and (1) the corner as restored or reestablished, and (2) to at least 4 of the witness monuments shown on the drawing in (a), above.

THE 1" IRON PIPE I FOUND WAS NOT IN HARMONY WITH RUGER'S MEASUREMENTS NOR COULD I FIND A RECORD OF HOW IT WAS SET.

- (e.) Was the corner reestablished through lost corner proportionate methods? If so, show the method, including the directions and distances to other public land survey corners used as evidence or used for proportioning in determining the corner location.

I, Donald Barnes, hereby certify that the corner points as identified by the corner code index were, in a field survey on NOV 8, 1983, established, re-established, monumented, re-monumented, recovered or restored as expressed below and in conformance with the regulations and rules as required in the current manual of survey instructions of the United States Department of Interior, Bureau of Land Management.



COUNTY SURVEYOR FILING DATA

Date of Computer Entry _____

Date Received _____

Date Microfilmed _____

Treasurer's Receipt No. _____

Number of Included Sheets _____

AFFIX YOUR LAND SURVEYOR SEAL.

X 5