

Paper weight-110# (minimum)

Black nonfading ink required

# U.S. PUBLIC LAND SURVEY MONUMENT RECORD

For Public Land Survey Corners In:

WI ADMINISTRATIVE CODE A-E 7.08 REQUIREMENT

T.      N. R.      E. 4th P.M.

REV 10/23/2004

USMONREC.DWG

### CORNER CODE INDEX

A	1	2	3	4	5	6	7	8	9	10	11	12	13	14	15	16	17	18	19	20	21	22	23	24	25	A	
B																										B	
C	6						5											4								C	
D																											D
E																											E
F																											F
G	7						8											9									G
H																											H
J																											J
K	18						17											16									K
L																											L
M																											M
N																											N
O																											O
P	19						20											21									P
Q																											Q
R																											R
S																											S
T	30						29											28									T
U																											U
V																											V
W																											W
X	31						32											33									X
Y																											Y
Z																											Z

FULTON TWP

ROCK COUNTY WI

IF AVAILABLE  
ROCK COUNTY COORDINATES PREFERRED

North \_\_\_\_\_ Elev. \_\_\_\_\_

East \_\_\_\_\_

Hor. Datum \_\_\_\_\_ Vert. Datum \_\_\_\_\_

LATITUDE \_\_\_\_\_ ELLIPS. HT. \_\_\_\_\_

LONGITUDE \_\_\_\_\_

NAD83(91) \_\_\_\_\_ NETWORK ADJ. YR \_\_\_\_\_

GPS (X) \_\_\_\_\_ TRAVERSE (X) \_\_\_\_\_

BASED ON THE FOLLOWING CONTROL:

PLACE MONUMENT SYMBOL  AT PROPER LOCATION ON ABOVE INDEX

CORNER MONUMENT

WITNESS MONUMENT

(a)

BEARINGS ARE BASED ON: -----

FIELD BOOK \_\_\_\_\_ PAGE # \_\_\_\_\_

SHEET 1 OF 3

SHOW A PLAN VIEW DRAWING DEPICTING THE CORNER MONUMENT AND SURROUNDING PHYSICAL FEATURES, INCLUDING THE EXCAVATION AREA AND DEPTH.

PLANNING & ZONING COMMITTEE ADOPTED THIS FORM ON 12/2/1982

CORNER CODE J-1

FU541 ^

(B) Describe any record evidence, monument evidence, occupational evidence, testimonial evidence or any other material evidence you considered, and whether the monument was found or placed.

1833 (SEP 20) MULLETT & BRINK NORTH ON EAST SIDE SEC 12 T4N  
R11E

957 ENTER PRAIRIE  
1538.46 INDIAN PATH @ NW & SE  
2131.8? LEAVE PRAIRIE  
2180.64 BURR OAK 10 IN DIAMETER  
2640 SET QUARTER SECTION POST BUR OAK 18 S23W  
9.9' BUR OAK 10 N4 1/4W 165'  
3993.66 BUR OAK 10 IN DIAMETER  
5280 SET POST CORNER SECTIONS 1 & 12 BLACK OAK 8 S  
1 1/2 W 55.44' BUR OAK 8 N57W 9.9' LAND ROLLING  
SECOND RATE FIRST 1/2 SOME PRAIRIE LAST 1/2  
TIMBERED WITH WHITE BLACK AND BUR OAK

1833 (SEP 20) MULLETT & BRINK NORTH ON EAST SIDE SEC 13 T4N  
R11E

82.5 DESCEND TO RIVER BOTTOM  
363 CATFISH CREEK 108.9' @ NE  
1320 CATFISH CREEK 108.9' @ NW  
2112 CATFISH CREEK 108.9' @ NE  
2442 LEAVE RIVER BOTTOM  
2640 SET QUARTER SECTION POST BUR OAK 20 S48W  
87.78' BUR OAK 10 N36W 125.4'  
4369.86 WHITE OAK 20 IN DIAMETER  
5280 SET POST CORNER SECTIONS 12 & 13 BLACK OAK 8  
S40W 23.1' BLACK OAK 8 N55W 12.54'

1833 (OCT 29) HARRISON EAST ON RAND BET SECS 12 & 13 T4N  
R11

1056 TRAIL CRS NORTH  
2640 TEMPY 1/4 SEC COR4  
4290 LEAVE PRAIRIE & ENTER SMALL SCATTERING TIMBER  
OF BURR & RED O  
5273.4 INT. E. BDY 39.6' S OF P. LAND FOR THE 1<sup>ST</sup> 3/4 OF A  
MILE ? ROLLING PRAIRIE 1<sup>ST</sup> RATE ? ROLLING 2<sup>ND</sup>  
RATE WITH RED & BUR O  
COR WEST BET SECS 12 & 13  
2636.7 QUARTER SEC COR. SET A POST & RAISED MOUND  
ON GROUND HIGH & ROLLING  
527.4 INT. SEC. COR  
OCT 29 1833

1834 (APR) HARRISON WEST ON A RANDOM BET 7 & 18

1320 LEAVE PRAIRIE  
2640 TEMPY 1/4 SEC COR.  
3884.1 TRAIL NW TO FOUR LAKES  
5338.74 WEST BOUNDARY 19.14' N OF P LAND ROLLING 2<sup>ND</sup>  
RATE WITH BUR OAK TIMBER FOR LAST 3/4 OF MILE  
1<sup>ST</sup> 1/4 LEVEL 2<sup>ND</sup> RATE PRAIRIE  
COR EAST BET 7 & 18

2698.74 QUARTER SEC COR {BURR O 10 N76W 213.18'  
BURR O 10 S10E 83.92' BURR O 10 BURR O  
10} MARKED

5338.74 INT. SEC COR

1885 STEBBINS BK 1 PG 6 TWP RD BEGINNING AT A STAKE ON  
THE NORTH LINE OF SEC 3 T4NR12E 1365.54' WEST OF THE  
NE COR OF SAID SEC; THENCE S30W 2640 SET ANGLE POST,  
THENCE S25W 3478.2 SET ANGLE POST, BURR OAK, N45W  
726'; THENCE S70W 2681.58' SET ANGLE POST BURR OAK 8;  
N50E 4620; THENCE S50-30W 2520.54 SET ANGLE POST W.  
OAK 20 S37E 86.46' BLACK OAK 24 S61E 103.62'; THENCE  
S. 2118.6' TO LINE BETWEEN 9 & 16 1320 E OF SW COR OF  
9; THENCE WEST ON SEC LINE 11,880' TO THE SW COR OF  
SEC 7 & THE WHOLE LENGTH OF THE RD IS 25,318.92'.  
COURSE GIVEN ACCORDING TO THE TRUE MERIDIAN.  
VARIATION OF NEEDLE 7-30 [GTH F & STH 51]

SHEET 1 OF 3  
CORNER CODE J-1

Donald Barnes  
11/04/07

FU541

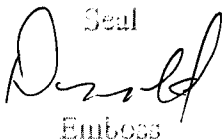
- 1852 TWP RD BK 1 PG 20 COMMENCING AT THE CANAL BRIDGE AT THE NORTH END OF STATE ST. IN FULTON VILLAGE IN SEC 18 IN SAID TOWN; THENCE IN A NORTHERLY DIRECTION ACROSS THE CATFISH RIVER AND ACROSS THE MARSH UP INTO THE RAVINE (FOLLOWING THE ROAD AS NOW TRAVELED) THENCE NORTH FOLLOWING THE NORTH RAVINE ON THE MOST PRACTICABLE ROUTE ACROSS THE NW 1/4 OF SAID SEC 18 TO THE NORTH LINE OF SAID SEC. ALSO BEGINNING AT THE NORTH W. COR. OF SAID SEC 18, AND SW COR OF SEC 7 IN SAID TOWN; THENCE EAST ON THE SEC. LINE BETWEEN SAID SECTIONS TILL THENCE EAST ON THE SEC LINE BETWEEN SAID SECTIONS TILL IT MEETS THE HIGHWAY RUNNING EAST & WEST BETWEEN SEC 8 AND 17 IN SAID TOWN; "\*\*\*\*\*" DECLARE THE ABOVE DESCRIBED ROAD (ACCORDING TO THE SURVEY ABOVE DESCRIBED) TO BE A PUBLIC HIGHWAY 4 RODS WIDE, AND "\*\*\*\*\*"
- 1871 RUGER VOL 2 PG 63 FD OLD STAKE & WHERE STUMPS OF B.T.S HAD BEEN DUG UP SET HH STONE 26X13X6 POINT UP VAR 7-27 TO W 1/4 COR SEC 7. W 1/4 COR SEC 7 DECLARED LOST, S 1/4 COR SEC 12 DECLARED LOST. VAR 6-49 TO S 1/4 COR SEC 12
- 1937 SUNNY VOL 3 PG 359 THIS COR. NOT IN BLACK TOP OF RD. DID NOT DIG FOR IT.
- 1951 DOT #6256 STH 184 STATES NOTHING ABOUT MON. CALLS FOR NW 18 839 WEST OF STH 184
- 1965 BATTERMAN VOL 4 PG 223 FD PK BY WP&L 2642.90 WP&L TO W 1/4 COR SEC 7
- 1968 LEE #1281 FD 24X12X4 POINTED HH 2656.77 TO W 1/4 COR SEC 18
- 1968 LEE #14337 COULD NOT FIND SURVEY MAP
- 1971 BATTERMAN VOL 4 PG 256 SET CI HARRISON MON AND PLACED STONE ON EASTERLY SIDE OF IT. DUG & FD 12"X4"X24" HH. REF SAME. SW OF WEST EDGE PVMT.
- 1971 LEE CSM VOL 2 PG 95 STATES NOTHING ABOUT MON.
- 1973 LEE #1286 SET PIN. SO-37-28E 2657.38 TO W 1/4 COR SEC 18.
- 1978 BARNES #1275 SHOWS RECORD DISTANCES.
- 1978 SCHROEDER CSM VOL 8 PG 139 STATES NOTHING ABOUT MON.
- 1979 LEUNBERGER CSM VOL 8 PG 371 C.I. ANGLE 89-54 @ NW COR SEC 18 FROM N 1/4 COR TO W 1/4 COR SEC 18
- 1981 BARNES VOL 6 PG 211 FD CAST IRON. OFF RD

FD CI MON. & SOUTH REFERENCE PIPE LAYING ON TOP OF GROUND. RESET PIPE.

C) Was the corner restored through acceptance of (1) an obliterated evidence location, or, (2) a found perpetuated location?

ACCEPTED FD CI.

I, **Donald Barnes**, hereby certify that the corner location as identified by the corner code index was determined by me under my direction and control and that this U.S. Public Land Survey Monument Record is correct and complete to the best of my knowledge and belief.

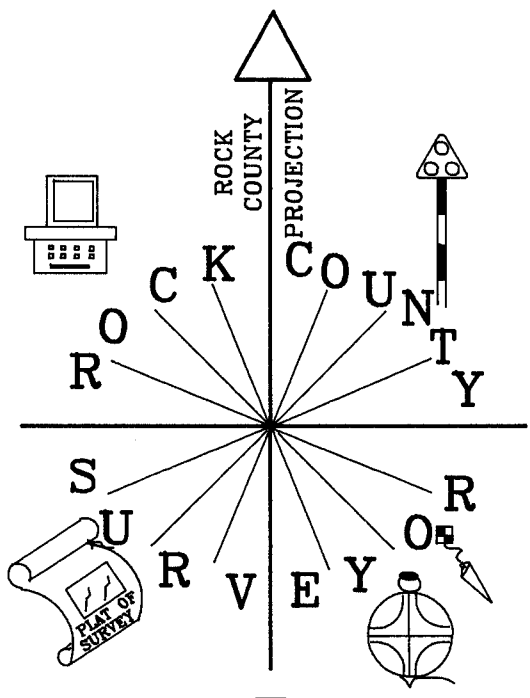
Seal  
  
Emboss

SHEET 2 OF 3

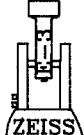
11/04/07  
Barnes

CORNER CODE **J-1**

A.E. 7.08 REQUIREMENT



3/4X24 REROD/  
CAP; 7.1' WEST  
OF WEST PVMT EDGE;  
NORTH SIDE OF DR. &  
GRASS

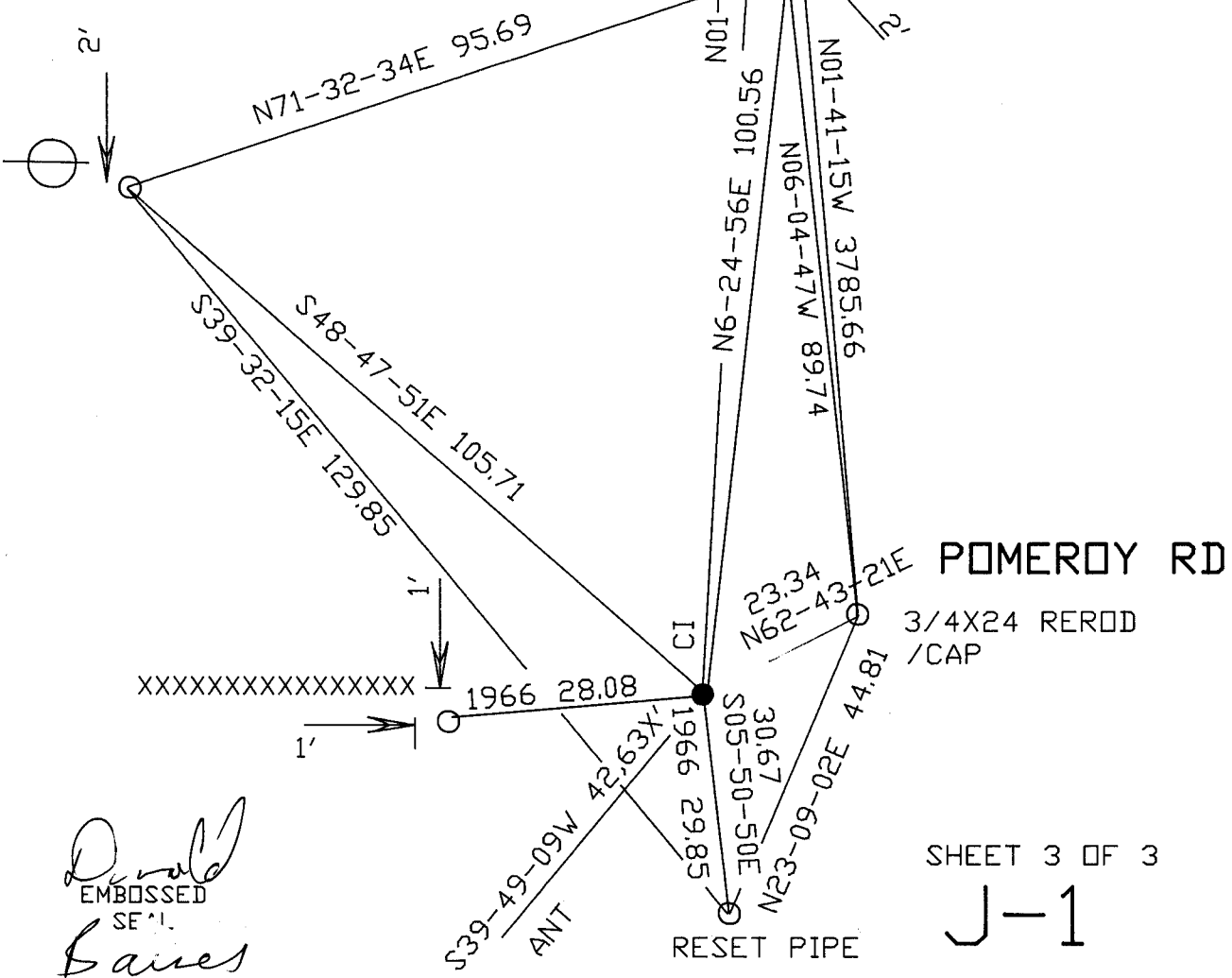


NOT TO SCALE

NW COR  
SEC 18  
T4N R12E  
FULTON TWP

OBS. SHEET  
#417

STH 59



*David*  
EMBOSSSED  
SEAL  
*Baines*  
11/04/07

SHEET 3 OF 3  
J-1