

U.S. PUBLIC LAND SURVEY MONUMENT RECORD

For Public Land Survey Corners in:

WI ADMINISTRATIVE CODE A-E 7.08 REQUIREMENT

T. 4N., R. 12E

CORNER CODE INDEX

A	1	2	3	4	5	6	7	8	9	10	11	12	13	14	15	16	17	18	19	20	21	22	23	24	25	
B																										
C	6																									
D																										
E																										
F																										
G	7																									
H																										
I																										
J																										
K	18																									
L																										
M																										
N																										
O																										
P	19																									
Q																										
R																										
S																										
T	30																									
U																										
V																										
W																										
X	31																									
Y																										
Z																										

FULTON TWP
ROCK COUNTY WI

IF AVAILABLE
ROCK COUNTY COORDINATES PREFERRED

North _____ Elev. _____

East _____

Hor. Datum _____ Vert. Datum _____

LATITUDE _____ ELLIPS. HT. _____

LONGITUDE _____

GPS (X) _____ TRAVERSE (X) _____

BASED ON THE FOLLOWING CONTROL:

PLACE MONUMENT SYMBOL AT PROPER LOCATION ON ABOVE INDEX

CORNER MONUMENT WITNESS MONUMENT

BEARINGS ARE BASED ON:

FIELD BOOK _____ PAGE # _____

SHEET 1 OF 3

SHOW A PLAN VIEW DRAWING DEPICTING THE CORNER MONUMENT AND SURROUNDING PHYSICAL FEATURES, INCLUDING THE EXCAVATION AREA AND DEPTH.

PLANNING & ZONING COMMITTEE ADOPTED THE ABOVE FORM ON 12/2/1982

CORNER CODE E-9

FU525

(B) Describe any record evidence, monument evidence, occupational evidence, testimonial evidence or any other material evidence you considered, and whether the monument was found or placed.

1834 HARRISON ORIG GOV. SURVEYOR

NORTH BETWEEN SECS 8 & 9

792 ROAD EAST & ENTER MARSH

1848 LEFT MARSH

2640 QUARTER SEC COR. WHITE OAK 20 N59W 42 & WHITE OAK 12 S83E 151

5280 COR TO SECS 4,5,8,9 WHITE OAK 14 S76E 286, RED OAK 8 N36E 210, BURR OAK 20 N38W 118, & WHITE OAK 24 S53W 153.

NORTH BETWEEN SECS 4 & 5

2640 QUARTER SEC COR.

EAST BETWEEN SECS 5 & 8

660 POND

1518 LEFT SAME BEARING N.E.

2640 TEMPY 1/4 SEC COR

5346 INT. EAST BOUNDARY 27.72' NORTH OF POST

WEST COR WEST BETWEEN 5 & 8

2673 QUARTER SEC COR. BURR OAK 12 S44E 35 RED OAK 12 N54W 38

5346 INT. SEC COR.

EAST ON RAND BET. 4 & 9

1372.8 ENTERED MARSH

2640 TEMPY 1/4 SEC COR IN MARSH

5082 ? MARSH

5332.8 INT. EAST BDY 18.48' NORTH OF POST

WEST COR WEST

2666.4 QUARTER SEC COR. BURR OAK 12 S5W 248 NO OTHER NEAR.

5280 SEC COR.

1871 RUGER VOL 2 PG 57 & MAP #1079 FD OLD STAKE AT COR ALSO FD STUMPS OF SE, SW, & NW BTS. SET IRREGULAR POINTED HH 17X9X7 SURROUNDED BY 5 HH. 2608.32 VAR 7-12 TO N 1/4 COR SEC 8.

1883 RUGER VOL 2 PG 412 & MAP #1023 FD COR SET BY SELF & REMAINS OF STUMP OF NW, SE, & SW BEARING TREES. 2696.76 TO S 1/4 COR SEC 4 & 2657.66 TO W 1/4 COR SEC 4.

18?? RUGER VOL 5 PG 431 WHITE OAK 14 S76E 286, RED OAK 8 N36E 210, BURR OAK 20 N38W 118, WHITE OAK 24 S53W 153 (SAME AS ORIG GOV. NOTES)

1887 LEE VOL 2 PG 392 & MAP #1022 FD STONE AT COR.

1899 BROWN VOL 2 PG 507 & MAP #1080 2656.50 TO E 1/4 COR SEC 8 & WEST 1304.16 TO FOUND STONE.

1964 ELY MAP #1046 FOUND 1" IRON STAKE

1966 BATTERMAN JR. VOL 4 PG 277 SHIMEALL FD STONE ON EDGE OF ROAD 1' DEEP. REFERENCED CORNER.

196? BATTERMAN JR. VOL 4 PG 253 REFERENCED COR & EAST 1348+/- TO FD STONE.

1975 WP&L VOL 6 PG 303 THE FOLLOWING BEARINGS & DISTANCES ARE STATE PLANE:

S88-53-53W 2615.15 TO S 1/4 COR SEC 5 (RUGER 2608.32)(SANDNESS 2614.54)

S2-00-22E 2652.71 TO E 1/4 COR SEC 8 (BROWN 2656.50)

N88-34-38E 2701.45 TO S 1/4 COR SEC 4 (RUGER 2696.76)

N1-48-41W 2650.63 TO W 1/4 COR SEC 4 (RUGER 2657.66)

SANDNESS NORTH 1330.85 TO MON. (WPL 1330.86)

1977 SANDNESS MAP #1056 S88-52-57W 1307.00 TO 1/16TH COR.

1977 SANDNESS NORTH 1330.65 & LEGEND CALLS FOR IRON STAKE

1977 SANDNESS AIR PHOTO TRAVERSE DIAGRAM. S88-53-05W 2614.54 TO S 1/4 COR SEC 5.

1978 SANDNESS VOL 5 PG 447 REPORTED CHANGES IN COORDINATES. WAS N/S 304,840.077'; E/W 2,243,597.747. NOW N/S 304,840.034; E.W 2,243,598.36 ELEV 895.72

1978 WOODMAN P30 PG 1 TOBACCO VALLEY ESTATES FOUND R/R. EAST 1048.60 TO POB

1980 SANDSNES VOL 6 PG 19 CALLED MARCH 1980 & REPORTED THE ABOVE
CHANGES IN VOL 5 PG 447.

FOUND TWO REFERENCE TIES. THE NW ONE WHICH IS A PIN WAS HORIZONTAL
AND IN THE NE DIRECTION THERE ARE TWO MONUMENTS WHICH ARE CLOSE. ONE
IS A PIN AND THE OTHER IS A 1" PIPE. THE RECORD TIE DISTANCE FROM THE R/R
SPIKE IS IN HARMONY WITH THE PIPE BUT THE PIN WHICH IS ONLY 3.43' TO THE
SW IS IN HARMONY WITH THE PHYSICAL NW PIN MONUMENT. THE DISTANCE
BETWEEN THE PINS IS CLOSE TO THE RECORD. NEED TO SEARCH FOR RECORD HH.

*C) Was the corner restored through acceptance of (1) an obliterated evidence location, or, (2) a found
perpetuated location?*

**DID NOT ACCEPT NOR REJECT R/R SPIKE. SPIKE WAS REFERENCED BECAUSE OF
PENDING ROAD CONSTRUCTION.**

*D) Describe any material discrepancy between the location of the corner as restored or reestablished and the
location of that corner as previously restored or reestablished by distance and direction. Show the discrepancy
on the plan view drawing under (a), above. Show the distances between the corner as previously restored or
reestablished and (1) the corner as restored or reestablished, and (2) to at least 4 of the witness monuments
shown on the drawing in (a), above.*

*(E) Was the corner reestablished through lost corner proportionate methods? If so, show the method, including
the directions and distances to other public land survey corners used as evidence or used for proportioning the
corner location.*

I, Donald Barnes, hereby certify that the corner location as identified by the corner code index was
determined by me under my direction and control and that this U.S. Public Land Survey Monument Record
is correct and complete to the best of my knowledge and belief.

Donald
seal

Barnes

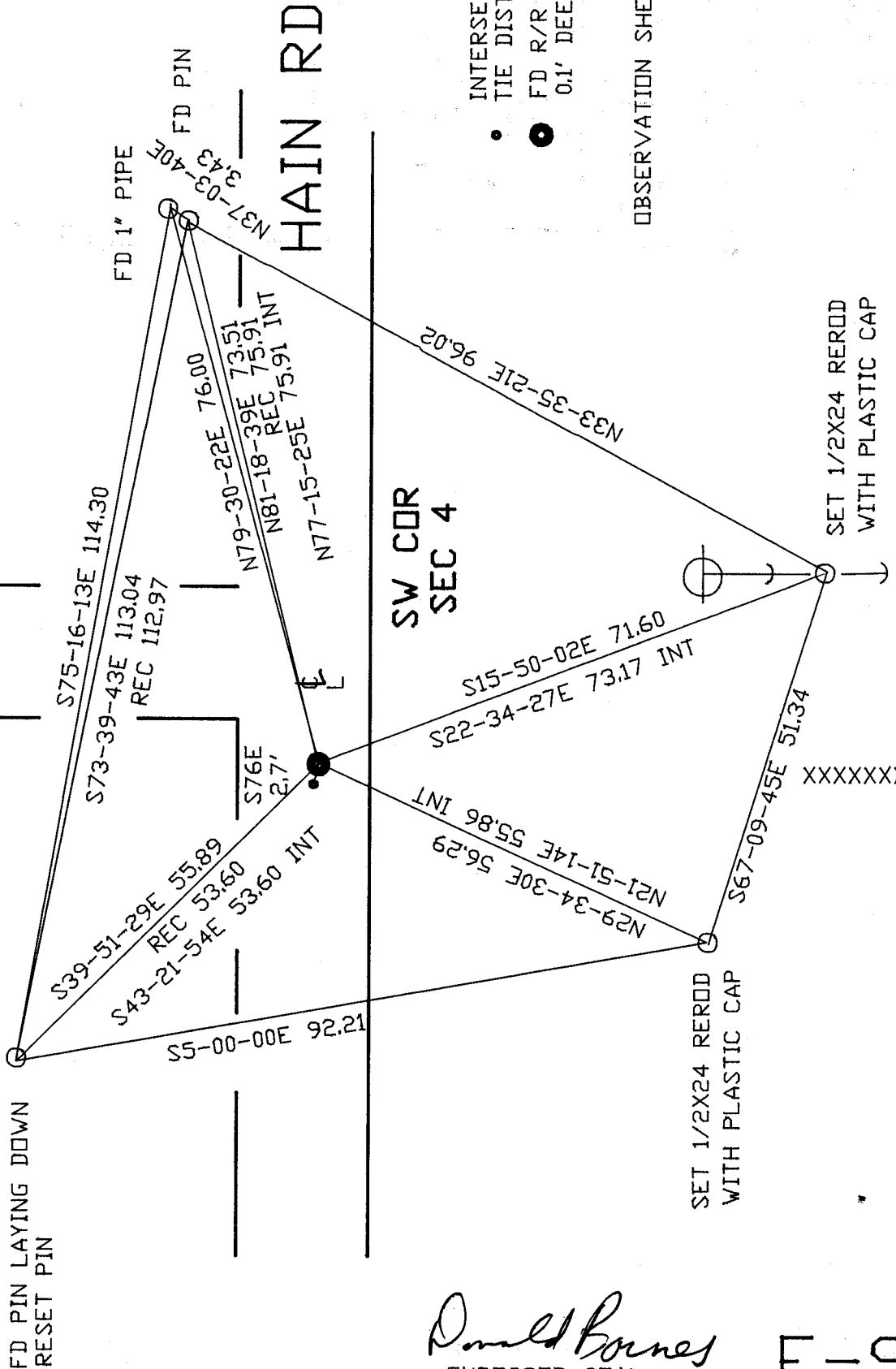
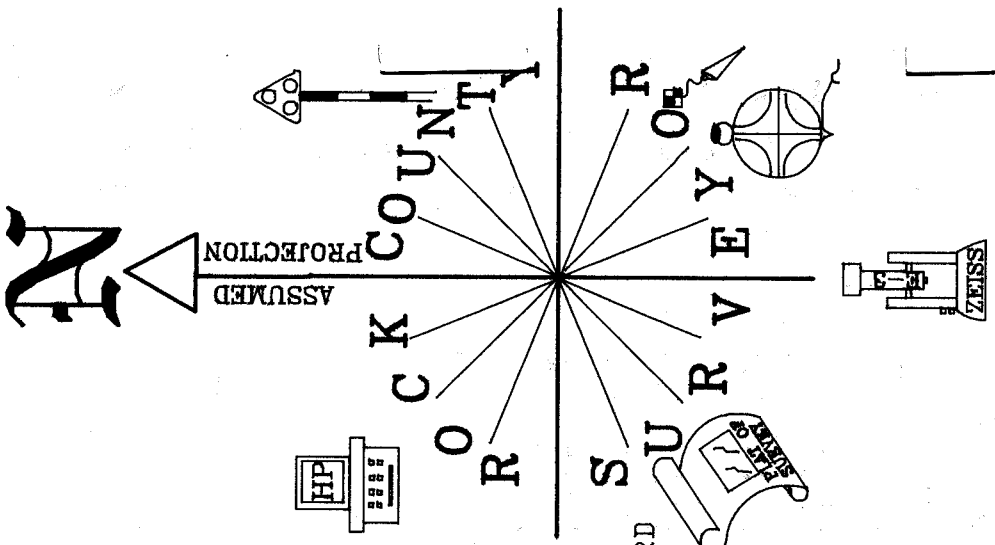
May 7 1999
emboss

Number of included sheets **2**

CORNER CODE **E-9**

A-E 7.08 REQUIREMENT

WEST
FULTON



INTERSECTION OF RECORD
TIE DISTANCES
● FD R/R SPIKE
○ 0.1' DEEP
OBSERVATION SHEET

SW CDR
SEC 4

XXXXXXXXXX

Donald Boynes
EMBOSSSED SEAL
May 7, 1997