

Paper weight-110# (minimum)

Black nonfading ink required

# U.S. PUBLIC LAND SURVEY MONUMENT RECORD

For Public Land Survey Corners In:  
T. 4 N. R. 12 E. 4th P.M.

WI ADMINISTRATIVE CODE A-E 7.08 REQUIREMENT  
REV 10/23/2004 USMONREC.DWG

### CORNER CODE INDEX

A	1	2	3	4	5	6	7	8	9	10	11	12	13	14	15	16	17	18	19	20	21	22	23	24	25	A
B																										B
C																										C
D																										D
E																										E
F																										F
G																										G
H																										H
J																										J
K																										K
L																										L
M																										M
N																										N
O																										O
P																										P
Q																										Q
R																										R
S																										S
T																										T
U																										U
V																										V
W																										W
X																										X
Y																										Y
Z																										Z

PLACE MONUMENT SYMBOL  AT PROPER LOCATION ON ABOVE INDEX

FULTON TWP  
ROCK COUNTY WI

IF AVAILABLE  
ROCK COUNTY COORDINATES PREFERRED

North \_\_\_\_\_ Elev. \_\_\_\_\_

East \_\_\_\_\_

Hor. Datum \_\_\_\_\_ Vert. Datum \_\_\_\_\_

LATITUDE \_\_\_\_\_ ELLIPS. HT. \_\_\_\_\_

LONGITUDE \_\_\_\_\_

NAD83(91) \_\_\_\_\_ NETWORK ADJ. YR \_\_\_\_\_

GPS (X) \_\_\_\_\_ TRAVERSE (X) \_\_\_\_\_

BASED ON THE FOLLOWING CONTROL:  
\_\_\_\_\_

CORNER MONUMENT

WITNESS MONUMENT

BEARINGS ARE BASED ON: \_\_\_\_\_

FIELD BOOK \_\_\_\_\_ PAGE # \_\_\_\_\_

SHEET 1 OF 4

SHOW A PLAN VIEW DRAWING DEPICTING THE CORNER MONUMENT AND SURROUNDING PHYSICAL FEATURES, INCLUDING THE EXCAVATION AREA AND DEPTH.

PLANNING & ZONING COMMITTEE ADOPTED THIS FORM ON 12/2/1982

CORNER CODE T-19

**FU4598-CENTER-SEC 26**

*(B) Describe any record evidence, monument evidence, occupational evidence, testimonial evidence or any other material evidence you considered, and whether the monument was found or placed.*

- 1966 SCHIMEALL #01385 SET PIPE @ CENTER SEC 26, COMMENCING @ CENTER THENCE EAST 325.68 ALONG E/W CENTERLINE TO PIPE; THENCE EAST 166.00 TO A PIPE; THENCE EAST 827.9 TO A PIPE @ 1/16<sup>TH</sup> COR; THENCE EAST 1319.65 TO E 1/4 COR SEC 26.
- 1972 LEE #01388 ESTABLISHED CENTER AT INTERSECTION OF 1/4 LINES. 2648.04 TO W 1/4 COR, 2649.73 TO E 1/4 COR, 2643.41 TO S 1/4 COR, & 2654.51 TO N 1/4 COR SEC 26.
- 1977 BARNES VOL 5 PG 285 CENTER OF SECTION 26-4-12 AS SET BY SHIMEALL. FD 1" PIPE 1' DEEP. REFERENCED SAME. DUG & FD NOTHING AT CENTER OF SEC AS SET BY LEE. SHOWS LEE'S CENTER OF SECTION POSITION AS 10.4 WEST & 1.69 SOUTH OF FD PIPE
- 1977 BARNES VOL 5 PG 287 THERE IS A PROBLEM WITH THE CENTER OF SECTION 26. MR. SHIMEALL SUPPOSEDLY SET THE CENTER AT THE INTERSECTION THE E/W 1/4 LINE AND THE N/S 1/4 LINE. SINCE THEN MANY SURVEYS BY MR. SHIMEALL AND OTHER SURVEYORS HAVE BEEN TIED TO THIS POINT. I WAS REQUESTED TO VERIFY THE LOCATION OF THE E 1/4 CORNER AND THE CENTER. I TRAVERSED THE SECTION AND TIED INTO THE E 1/4, W 1/4, S 1/4, N 1/4, SE, AND CENTER OF SECTION AS SET BY SHIMEALL. THE COMPUTED DISTANCES TO THE E 1/4 COR AS NOTED IN SURVEYS BY SHIMEALL AND LEE INDICATES THEY USED THE SAME CORNER. THE N 1/4 COR AGREES WITH THE SHORT TIES THAT MR SHIMEALL HAD ON A PLAT OF SURVEY. MY COMPUTATIONS SHOW THAT THE INTERSECTION OF THE E/W AND N/S 1/4 LINES IS AS RECORDED BY LEE ON THE PLAT OF SURVEY DATED OCT 30, 1972.
- 1977 BARNES VOL 5 PG 288 SHOWS RECORD DISTANCES. CALLS FOR 2636.8 FROM CENTER TO E 1/4 COR SEC 26, 2652.79 FROM FD PIPE TO N 1/4 COR SEC 26
- 1979 COMBS BK 31 PG 1 "CURHARKEN ESTATES" FD 1" PIPE.

I FD A 1" PIPE 12" DEEP IN A FARM FIELD. I PLACED 2 MAGNETS IN THE HOLE WITH THE PIPE.

*C) Was the corner restored through acceptance of (1) an obliterated evidence location, or, (2) a found perpetuated location?*

I ACCEPTED THE FD PERPETUATED LOCATION. THE POLY MON. @ THE 1/16<sup>TH</sup> CORNER IS 0.46' EAST OF THE LINE BETWEEN THE N 1/4 COR SEC 26 AND THE PIPE FOUND AT THE CENTER OF SEC 26. THE PIPE AT THE CENTER IS ALSO 1.59' NORTH OF A LINE BETWEEN THE WEST AND EAST 1/4 CORNERS OF SEC 26. IT APPEARS SHIMEALL ATTEMPTED TO ESTABLISH THE CENTER IN HARMONY WITH THE LS FOUND AT THE W 1/16<sup>TH</sup> COR OF THE NE 1/4 OF SEC 26 AND THE FD STONE AT THE S 1/16<sup>TH</sup> COR OF THE NE 1/4 OF SEC 26. IT APPEARS BY THE FD STONES IN THE SECTION, THAT IT WAS SUBDIVIDED IN THE 1800S OR EARLY 1900S BUT THERE IS NO RECORD IN THIS IN THE OFFICE.

*Donald Barnes*  
8-06-07

FU4598 CENTER SEC 26

(E) Was the corner reestablished through lost corner proportionate methods? If so, show the method, including the directions and distances to other public land survey corners used as evidence or used for proportioning the corner location.

D) Describe any material discrepancy between the location of the corner as restored or reestablished and the location of that corner as previously restored or reestablished by distance and direction. Show the discrepancy on the plan view drawing under (a), above. Show the distances between the corner as previously restored or reestablished and (1) the corner as restored or reestablished, and (2) to at least 4 of the witness monuments shown on the drawing in (a), above.

IN 1972, LEE ESTABLISHED THE CENTER AS THE INTERSECTION OF THE  $\frac{1}{4}$  LINES FROM THE  $\frac{1}{4}$  CORNERS WITHOUT REGARD TO ANY OF THE  $\frac{1}{16}$ <sup>TH</sup> CORNERS. I WAS UNABLE TO FIND HIS MONUMENT AT THE CENTER OF THE SECTION.

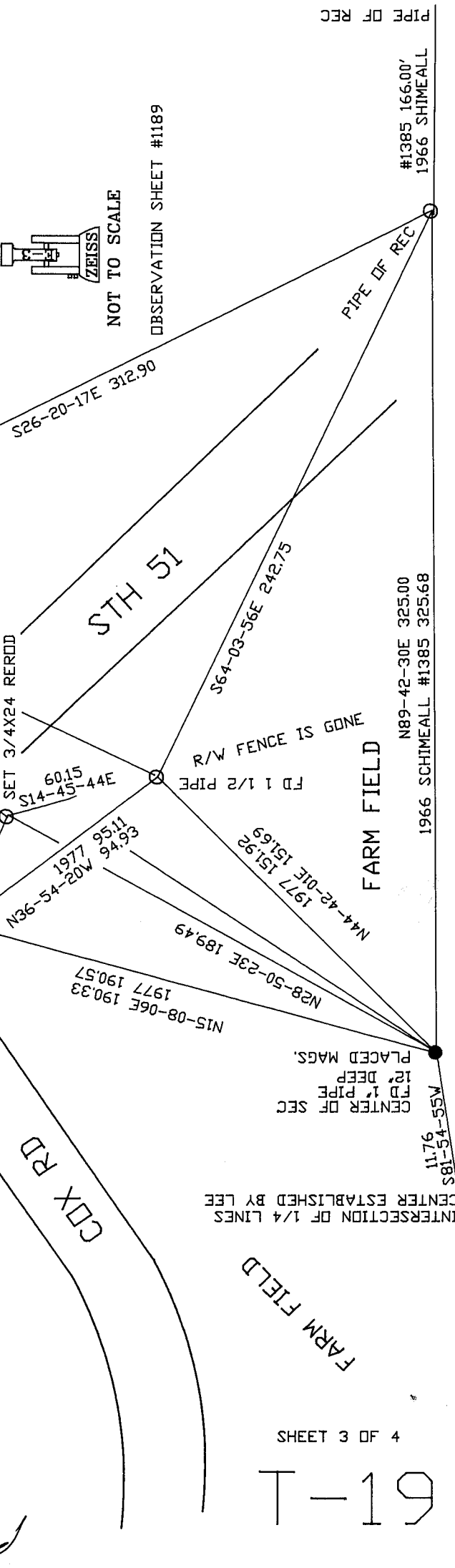
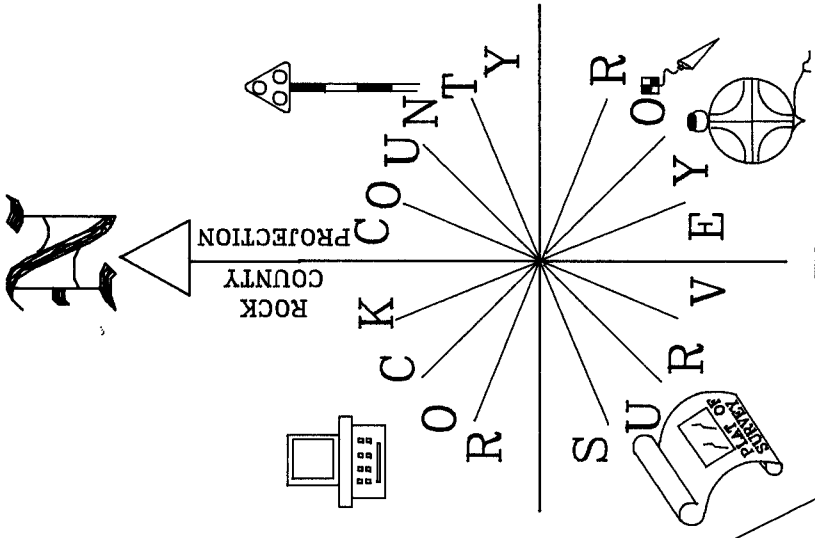
I, **Donald Barnes**, hereby certify that the corner location as identified by the corner code index was determined by me under my direction and control and that this U.S. Public Land Survey Monument Record is correct and complete to the best of my knowledge and belief.

Seal  
*Donald Barnes*

Emboss 8-06-07

SHEET 2 OF 4

CORNER CODE **T-19**



CENTER OF SEC 26  
 FULTON TWP  
 T4N R12E

INTERSECTION OF 1/4 LINES  
 CENTER ESTABLISHED BY LEE

FARM FIELD

FARM FIELD

SHEET 3 OF 4

19-T

EMBOSSED SEAL  
*Donald Barnes*  
 8-02-07

NOT TO SCALE  
 OBSERVATION SHEET #1189

PIPE OF REC

#1385 166.00'  
 1966 SHIMEALL

N89-42-30E 325.00  
 1966 SCHIMEALL #1385 325.68

11.76  
 S81-54-55W

CENTER OF SEC  
 12' DEEP  
 FD 1" PIPE  
 PLACED MAGS.

N15-08-06E 190.33  
 1977 190.57  
 N28-50-23E 189.49

N44-42-01E 151.69  
 1977 151.92

FD 1 1/2 PIPE

ENGG SI FENCE IS GDN

S64-03-56E 242.75

STH 51

S26-20-17E 312.90

SET 3/4X24 REROD  
 344-54-41S  
 51.09

N36-54-20W 95.11  
 1977 94.93  
 11.56

N66-56-25E  
 45.30

ANT  
 0.997  
 7.7  
 42.92N  
 FD 1 1/2 PIPE

N39-14-18E 149.88  
 N33-25-35E 337.97  
 N24-31-15E 191.53

FD PIPE

