

U.S. PUBLIC LAND SURVEY MONUMENT RECORD

For Public Land Survey Corners in the

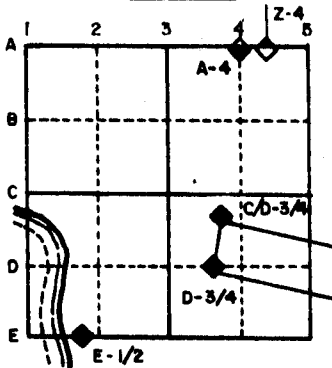
T. 4 N., R. 12 E.

CORNER CODE INDEX

	1	2	3	4	5	6	7	8	9	10	11	12	13	14	15	16	17	18	19	20	21	22	23	24	25
A																									
B																									
C	6		5							4															
D																									
E																									
F																									
G																									
H	7		8							9															
I																									
J																									
K																									
L	18		17							16															
M																									
N																									
O																									
P	19		20							21															
Q																									
R																									
S																									
T	30		29							28															
U																									
V																									
W																									
X																									
Y																									
Z	31		32							33															

PLACE MONUMENT SYMBOL (◆) AT PROPER LOCATION ON ABOVE INDEX

EXAMPLE



Fulton TWP
ROCK COUNTY WI

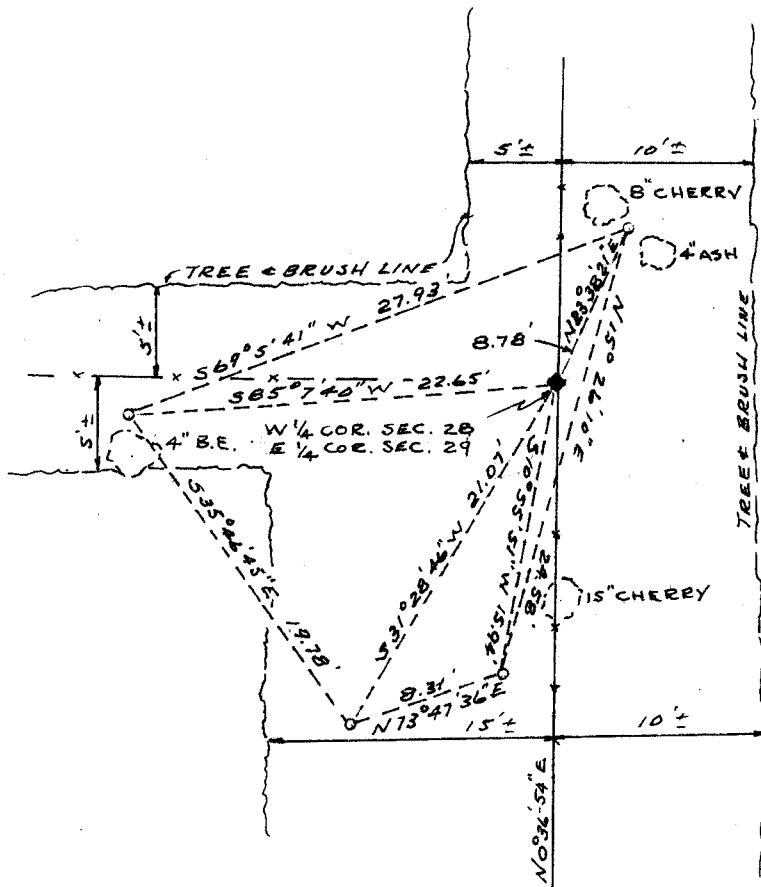
IF AVAILABLE
STATE PLANE COORDINATES

North (Y) _____ Eleve. (Z) _____
 East (X) _____ Zone _____
 Hor. Datum _____ Vert. Datum _____

- (a) ◆ CORNER MONUMENT
 Exist cast iron mon
 fnd broken off; set
 back over base to be at
 the surface.

- WITNESS MONUMENT
 3/4" x 24" I.D. iron pipe set.

BEARINGS ARE BASED ON TRUE NORTH
 SCALE 1" = 10'



MICROFILMED

FIELD BOOK _____ PAGE # _____

SHOW A PLAN VIEW DRAWING DEPICTING THE CORNER MONUMENT AND SURROUNDING PHYSICAL FEATURES, INCLUDING THE EXCAVATION AREA AND DEPTH. THE CORNER MONUMENT SHALL HAVE THE FOLLOWING CHARACTERISTICS: 1) HAVE AT LEAST TWO PREDETERMINED BREAK-OFF POINTS. 2) IF BROKEN, LEAVE A PERMANENTLY MAGNETIZED REMNANT AT THE ORIGINAL POINT. 3) MUST BE EXTENDABLE. 4) THE CAP IS INSCRIBED: ROCK COUNTY SURVEY MONUMENT - PENALTY FOR DISTURBING MARKER. 5) OR AN EXISTING CUT LIMESTONE. AN IRON PIPE 1/2" x 4'0" (MINIMUM) MAY BE USED IN AREAS WHERE GROUND WATER IS WITHIN ONE FOOT OF THE SURFACE. IF THE CORNER IS OCCUPIED BY AN IMPROVEMENT (MANHOLE, BURIED CABLE, ETC.) ANY DURABLE, DISTINCT MONUMENT MAY BE USED. CORNERS SHALL BE REFERENCED WITH AT LEAST 4 DURABLE WITNESS MONUMENTS. WITNESS MONUMENTS SHALL BE MADE OF CONCRETE, NATURAL STONE, IRON OR OTHER EQUALLY DURABLE MATERIAL, EXCEPT WOOD. DESCRIBE THE CORNER AND THE WITNESS MONUMENTS.

CORNER CODE:

T9

(b.) Describe any record evidence, monument evidence, occupational evidence, testimonial evidence or any other material evidence you considered, and whether the monument was found or placed. The evidence for acceptance of this corner is the broken Harrison cast iron monument found at this corner which was found at the intersection of old fence-lines running to the north, south and west. Measurements to existing monuments to the north and south show this corner monument to be very nearly $\frac{1}{2}$ way between corners, also, the monument found agrees with the distance of record on CSM's Vol. 6, p. 348 and Vol. 7, p. 128. Note that existing fences at the corner are gone but are standing distant from the corner.

(c.) Was the corner restored through acceptance of (1) an obliterated evidence location, or, (2) a found perpetuated location?

A found perpetuated location.

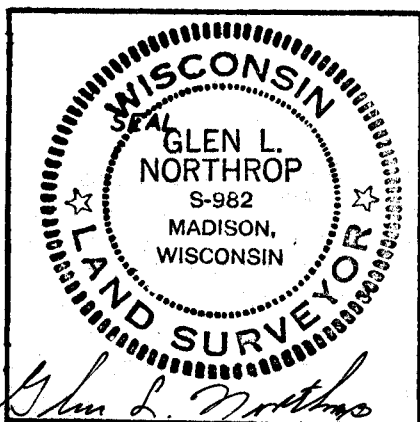
(d.) Describe any material discrepancy between the location of the corner as restored or reestablished and the location of that corner as previously restored or reestablished by distance and direction. Show the discrepancy on the plan view drawing under (a), above. Show the distances between the corner as previously restored or reestablished and (1) the corner as restored or reestablished, and (2) to at least 4 of the witness monuments shown on the drawing in (a), above.

The distance from the SW corner Sec. 28 to this corner measures 2659.92' by computation from a traverse and was previously measured as 2654.85' by Ruger, however the 1/16 corner south of this corner as set by Ruger (stone not found, used fence corner) divides the $\frac{1}{2}$ mile equally at 1329.96'.

(e.) Was the corner reestablished through lost corner proportionate methods? If so, show the method, including the directions and distances to other public land survey corners used as evidence or used for proportioning in determining the corner location.

NO.

I, Glen L. Northrop, hereby certify that the corner points as identified by the corner code index were, in a field survey on June 21, 1985, established, re-established, monumented, re-monumented, recovered or restored as expressed above and in conformance with the regulations and rules as required in the current manual of survey instructions of the United States Department of Interior, Bureau of Land Management.



COUNTY SURVEYOR FILING DATA

Date of Computer Entry _____

Date Received _____

Date Microfilmed AUG 30 1985

Treasurer's Receipt No. _____

Number of Included Sheets _____

AFFIX YOUR LAND SURVEYOR SEAL.