

# U.S. PUBLIC LAND SURVEY MONUMENT RECORD

For Public Land Survey Corners In:  
T. 4 N. R. 12 E. 4th P.M.  
CORNER CODE INDEX

WI ADMINISTRATIVE CODE A-E 7.08 REQUIREMENT  
REV 10/23/2004 USMONREC.DWG

	1	2	3	4	5	6	7	8	9	10	11	12	13	14	15	16	17	18	19	20	21	22	23	24	25			
A																											A	
B																											B	
C	6						5											4									C	
D																												D
E																												E
F																												F
G	7						8																					G
H																												H
J																												J
K	18						17																					K
L																												L
M																												M
N																												N
O																												O
P	19						20																					P
Q																												Q
R																												R
S																												S
T	30						29																					T
U																												U
V																												V
W																												W
X	31						32																					X
Y																												Y
Z																												Z

1 2 3 4 5 6 7 8 9 10 11 12 13 14 15 16 17 18 19 20 21 22 23 24 25  
PLACE MONUMENT SYMBOL  AT PROPER LOCATION ON ABOVE INDEX

FULTON TWP  
ROCK COUNTY WI

IF AVAILABLE  
ROCK COUNTY COORDINATES PREFERRED

North \_\_\_\_\_ Elev. \_\_\_\_\_

East \_\_\_\_\_

Hor. Datum \_\_\_\_\_ Vert. Datum \_\_\_\_\_

LATITUDE \_\_\_\_\_ ELLIPS. HT. \_\_\_\_\_

LONGITUDE \_\_\_\_\_

NAD83(91) \_\_\_\_\_ NETWORK ADJ. YR \_\_\_\_\_

GPS (X) \_\_\_\_\_ TRAVERSE (X) \_\_\_\_\_

BASED ON THE FOLLOWING CONTROL:  
\_\_\_\_\_

CORNER MONUMENT       WITNESS MONUMENT

BEARINGS ARE BASED ON: \_\_\_\_\_

FIELD BOOK \_\_\_\_\_ PAGE # \_\_\_\_\_

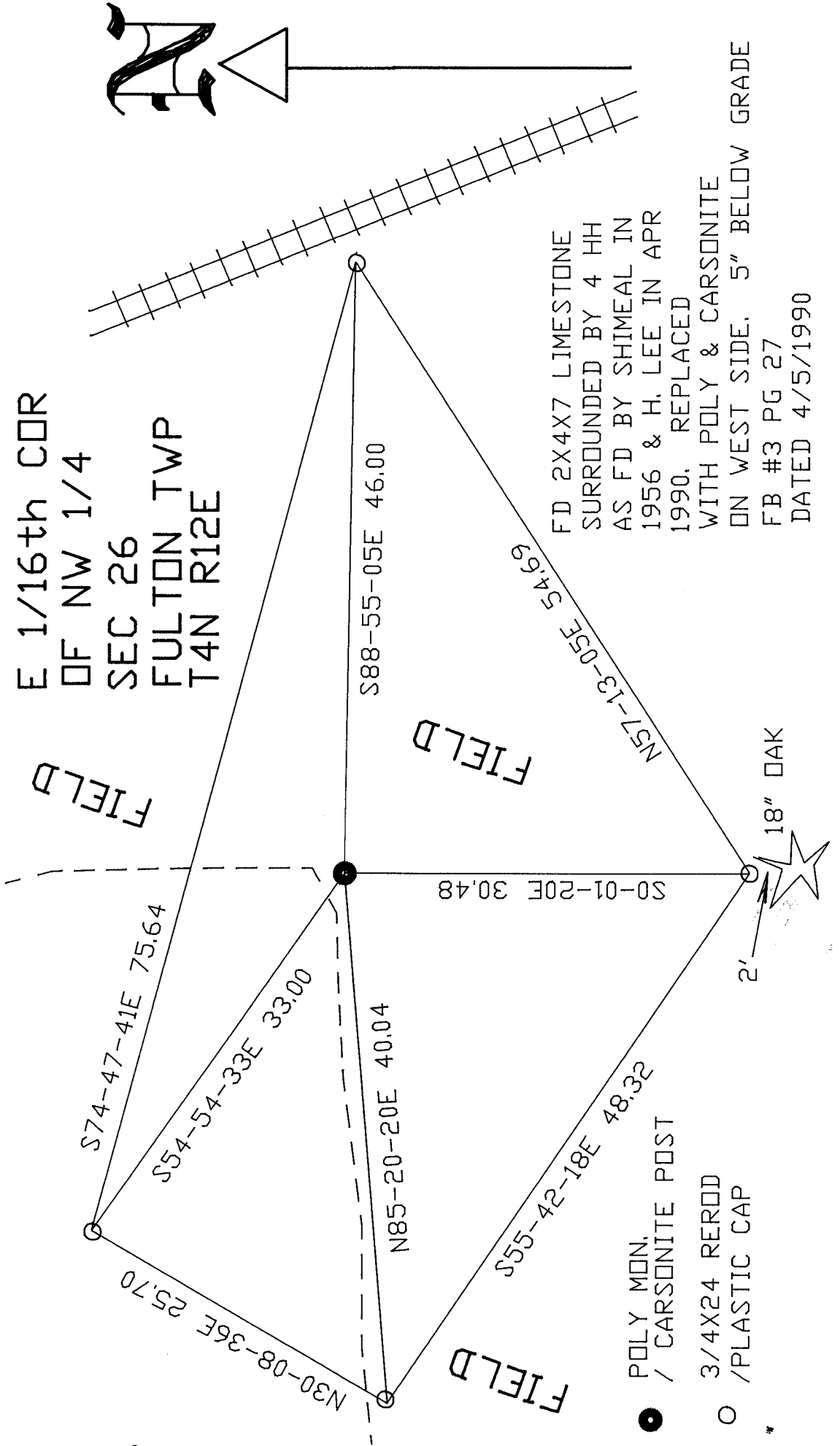
SHEET 1 OF 1

SHOW A PLAN VIEW DRAWING DEPICTING THE CORNER MONUMENT AND SURROUNDING PHYSICAL FEATURES, INCLUDING THE EXCAVATION AREA AND DEPTH.

PLANNING & ZONING COMMITTEE ADOPTED THIS FORM ON 12/2/1982

CORNER CODE S-19

E 1/16th COR  
 OF NW 1/4  
 SEC 26  
 FULTON TWP  
 T4N R12E



FD 2X4X7 LIMESTONE  
 SURROUNDED BY 4 HH  
 AS FD BY SHIMEAL IN  
 1956 & H. LEE IN APR  
 1990. REPLACED  
 WITH POLY & CARSONITE  
 ON WEST SIDE. 5" BELOW GRADE  
 FB #3 PG 27  
 DATED 4/5/1990

- POLY MON.  
/ CARSONITE POST
- 3/4X24 REROD  
/ PLASTIC CAP

WOODS  
*Donald Barnes*  
 EMBOSSED SEAL  
 1/19/07

SHEET 1 OF 1  
 S-19