

Paper weight-110# (minimum)

Black nonfading ink required

U.S. PUBLIC LAND SURVEY MONUMENT RECORD

For Public Land Survey Corners In:

WI ADMINISTRATIVE CODE A-E 7.08 REQUIREMENT

T. 4N. R. 12E. 4th P.M.

REV 10/23/2004

USMONREC.DWG

CORNER CODE INDEX

FULTON TWP

ROCK COUNTY WI

IF AVAILABLE

ROCK COUNTY COORDINATES PREFERRED

A	1	2	3	4	5	6	7	8	9	10	11	12	13	14	15	16	17	18	19	20	21	22	23	24	25	A	
B						6					5					4						3				2	B
C																											C
D																											D
E																											E
F																											F
G																											G
H																											H
J																											J
K																											K
L																											L
M																											M
N																											N
O																											O
P																											P
Q																											Q
R																											R
S																											S
T																											T
U																											U
V																											V
W																											W
X																											X
Y																											Y
Z																											Z

North _____ Elev. _____

East _____

Hor. Datum _____ Vert. Datum _____

LATITUDE _____ ELLIPS. HT. _____

LONGITUDE _____

NAD83(91) _____ NETWORK ADJ. YR _____

GPS (X) _____ TRAVERSE (X) _____

BASED ON THE FOLLOWING CONTROL:

PLACE MONUMENT SYMBOL AT PROPER LOCATION ON ABOVE INDEX

CORNER MONUMENT

WITNESS MONUMENT

(a)

BEARINGS ARE BASED ON: _____

FIELD BOOK _____ PAGE # _____

SHEET 1 OF 3

SHOW A PLAN VIEW DRAWING DEPICTING THE CORNER MONUMENT AND SURROUNDING PHYSICAL FEATURES, INCLUDING THE EXCAVATION AREA AND DEPTH.

PLANNING & ZONING COMMITTEE ADOPTED THIS FORM ON 12/2/1982

CORNER CODE V-19

FU610^

(B) Describe any record evidence, monument evidence, occupational evidence, testimonial evidence or any other material evidence you considered, and whether the monument was found or placed.

- 1836 (JULY 11) BURNHAM EAST RANDOM BETWN SECS 26 & 35
5287.26 INT EAST BOUNDARY 6.6' NORTH FIRST RATE W &
BUR OAK OPENINGS
WEST CORRECTED BETWN 35 & 26
2451.9 W OAK 18 IN DI
2643.3 SET 1/4 SEC POST W OAK 16 N28W 34.32'; W OAK 18
S67W 33.66'
NO STATIONS
5287.26 TO CORNERS
- 1875 RUGER VOL 2 PG 188 #6571 FD N.W. BT & STUMP OF S.W. BT.
COR IN DITCH OF RD WASHED OUT DROVE STAKE AT COR &
SURROUNDED STAKE BY 4 HH STONES VAR 5-39 2648.25 TO
CEN SEC 35, 5289.57 TO S 1/4 COR SEC 35
- 1961 BATTERMAN VOL 4 PG 81 FD 1" PIPE AT THE N 1/4 COR SEC 35
SET BY SHIMEALL. REF. SAME.
- 1971 SHARKEY CSM VOL 2 PG 184 UNABLE TO DETERMINE TYPE OF
MON. FROM LEGEND.
- 1971 SHIMEALL CSM VOL 2 PG 184 LEGEND CALLS FOR FD PIPE.
WESTERLY 855.91' TO THE NE COR OF CSM LOT (LOT IS
132.00 WIDE). R/W @ NORTH LINE OF CSM IS 33.00'.
- 1972 LEE #1388 LEGEND CALLS FOR SETTING PIPE. 2643.41 TO
SE COR SEC 26, 2649.19 TO SW COR SEC 26, ANGLE 180-00-
15 @ S 1/4 COR SEC 26 FROM SE TO SW CORNERS OF SEC 26.
- 1972 LEE CSM VOL 2 PG 208 UNABLE TO DETERMINE TYPE OF
MON. FROM LEGEND.
- 1972 COMBS CSM VOL 3 PG 12 STATES NOTHING ABOUT TYPE OF
MON.
- 1973 SCHROEDER CSM VOL 3 PG 105 STATES NOTHING ABOUT
MON. NORTH ALONG N/S 1/4 LINE TO PIPE @ SE COR OF LOT.
ANGLE 90-21 @ S 1/4 COR SEC 26 FROM SW COR SEC 26 TO
N/S 1/4 LINE SEC 26.
- 1973 SHIMEAL CSM VOL 3 PG 65 STATES NOTHING ABOUT MON.
EASTERLY 301.32 TO SW COR OF LOT 1.
- 1973 LEE #1474 IRON PIPE FOUND
- 1974 SCHROEDER #1358 CALLS FOR COR BUT STATES NOTHING
ABOUT MON.
- 1974 COMBS #1387 CALLS FOR COR BUT STATES NOTHING
ABOUT MON.
- 1974 SCHROEDER CSM VOL 4 PG 10 STATES NOTHING ABOUT MON.
- 1976 COMBS #1381 STATES NOTHING ABOUT TYPE OF MON.
EASTERLY 301.32 TO SW COR OF LOT 1 CSM VOL 3 PG 65
- 1977 BARNES VOL 5 PG 287 THERE IS A PROBLEM WITH THE
CENTER OF SEC 26. MR. SHIMEALL SUPPOSEDLY SET THE
CENTER AT THE INTERSECTION OF THE E/W & N/S 1/4 LINES.
SINCE THEN MANY SURVEYS BY MR SHIMEALL AND OTHER
SURVEYORS HAVE BEEN TIED TO THIS POINT. I WAS
REQUESTED TO VERIFY THE LOCATION OF THE E 1/4 COR AND
THE CENTER. I TRAVERSED THE SECTION AND TIED INTO THE
QUARTER CORNERS, SE COR, AND CENTER OF SEC 26 AS SET
BY SHIMEALL AND LEE INDICATES THEY USED THE SAME
CORNER. THE N 1/4 COR AGREES WITH THE SHORT TIES THAT
MR SHIMEALL HAD ON A PLAT OF SURVEY. MY
COMPUTATIONS SHOW THAT THE INTERSECTION OF THE E/W
AND N/S 1/4 LINES IS AS RECORDED BY LEE ON THE PLAT OF
SURVEY DATED OCT 30 1872.
- 1977 BARNES VOL 5 PG 288 FD CI MON. SHOWS REC DISTANCES &
BEARINGS.
- 1980 BARNES VOL 6 PG 17 ANGLE 179-59-45 @ N 1/4 COR SEC 35
FROM NW TO NE CORNERS SEC 35
- 1985 COMBS "LOCHWOOD FIRST ADDITION" BK 32 PG 27 C.I.
- 1991 COMBS #11751 ALUM. MON. M.I. INSPECTION.

Donald Barnes

Aug 20, 2007

FU610

1994 COMBS CSM VOL 18 PG 57 C.I. 2655.55 TO SE COR SEC 26.
EASTERLY 301.32 TO SW CSM LOT COR (LOT IS 249.88'
WIDE). R/W AT CSM IS 33.00.

FD 0.6' DEEP A C.I. WITH TOP BROKE OFF. CI IS 0.06' OFF A LINE
BETWEEN THE NE & NW CORNERS OF SEC 35.

C) Was the corner restored through acceptance of (1) an obliterated evidence location, or, (2) a found perpetuated location?

ACCEPTED FOUND PERPETUATED LOCATION. RUGER'S CALL OF
"COR IN DITCH OF RD WASHED OUT DROVE STAKE AT COR" ISN'T IN
HARMONY WITH EXISTING DITCHES AND HIS DISTANCES.

D) Describe any material discrepancy between the location of the corner as restored or reestablished and the location of that corner as previously restored or reestablished by distance and direction. Show the discrepancy on the plan view drawing under (a), above. Show the distances between the corner as previously restored or reestablished and (1) the corner as restored or reestablished, and (2) to at least 4 of the witness monuments shown on the drawing in (a), above.

NONE

(E) Was the corner reestablished through lost corner proportionate methods? If so, show the method, including the directions and distances to other public land survey corners used as evidence or used for proportioning the corner location.

NO

I, **Donald Barnes**, hereby certify that the corner location as identified by the corner code index was determined by me under my direction and control and that this U.S. Public Land Survey Monument Record is correct and complete to the best of my knowledge and belief.

Seal
Donald Barnes

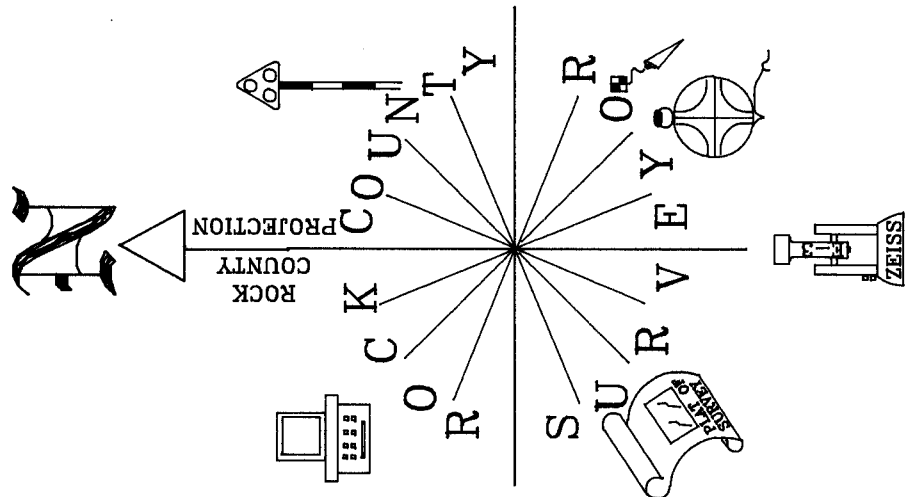
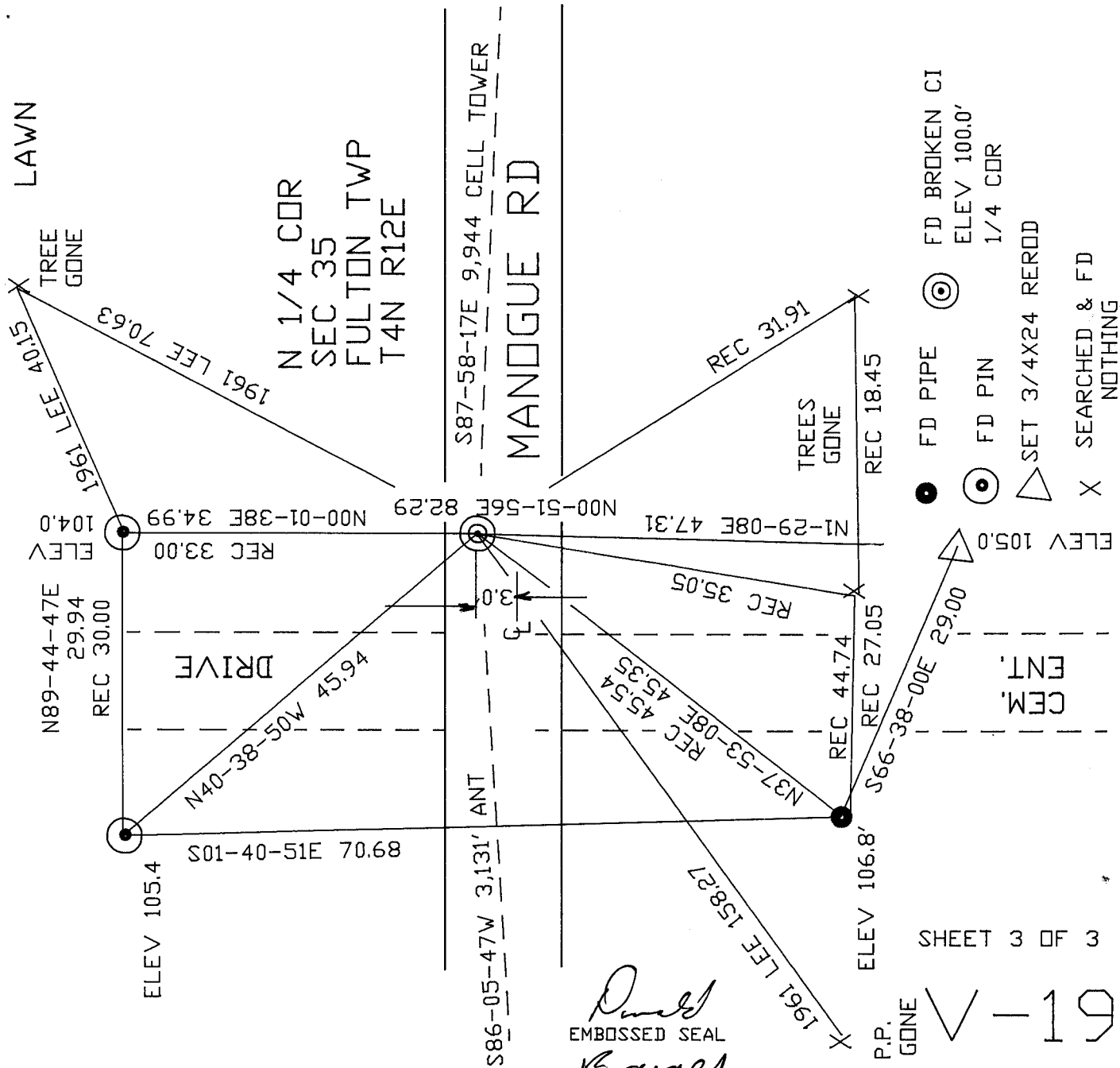
Emboss

Aug 20, 2007

SHEET 2 OF 3

CORNER CODE
A.E. 7.08 REQUIREMENT

V-19



NOT TO SCALE
 OBS. SHEET #610
 VERTICAL DATUM-ASSUMED

- FD PIPE
 - ⊙ FD PIN
 - △ SET 3/4X24 REROD
 - ×
- SEARCHED & FD NOTHING

Donald Barnes
 EMBOSSED SEAL
 Aug 20 2007

SHEET 3 OF 3

P.P. GONE V-19