

Paper weight-110# (minimum)

Black nonfading ink required

# U.S. PUBLIC LAND SURVEY MONUMENT RECORD

For Public Land Survey Corners In:

WI ADMINISTRATIVE CODE A-E 7.08 REQUIREMENT

T. 4 N. R. 12E 4th P.M.

REV 10/23/2004

USMONREC.DWG

### CORNER CODE INDEX

1	2	3	4	5	6	7	8	9	10	11	12	13	14	15	16	17	18	19	20	21	22	23	24	25	
A																									A
B																									B
C	6																								C
D																									D
E																									E
F																									F
G	7																								G
H																									H
J																									J
K	18																								K
L																									L
M																									M
N																									N
O																									O
P	19																								P
Q																									Q
R																									R
S																									S
T																									T
U	30																								U
V																									V
W																									W
X	31																								X
Y																									Y
Z																									Z

FULTON TWP  
ROCK COUNTY WI

IF AVAILABLE  
ROCK COUNTY COORDINATES PREFERRED

North \_\_\_\_\_ Elev. \_\_\_\_\_

East \_\_\_\_\_

Hor. Datum \_\_\_\_\_ Vert. Datum \_\_\_\_\_

LATITUDE \_\_\_\_\_ ELLIPS. HT. \_\_\_\_\_

LONGITUDE \_\_\_\_\_

NAD83(91) \_\_\_\_\_ NETWORK ADJ. YR \_\_\_\_\_

GPS (X) \_\_\_\_\_ TRAVERSE (X) \_\_\_\_\_

BASED ON THE FOLLOWING CONTROL:

PLACE MONUMENT SYMBOL  AT PROPER LOCATION ON ABOVE INDEX

CORNER MONUMENT

WITNESS MONUMENT

BEARINGS ARE BASED ON: \_\_\_\_\_

FIELD BOOK \_\_\_\_\_ PAGE # \_\_\_\_\_

SHEET 1 OF 3

SHOW A PLAN VIEW DRAWING DEPICTING THE CORNER MONUMENT AND SURROUNDING PHYSICAL FEATURES, INCLUDING THE EXCAVATION AREA AND DEPTH.

PLANNING & ZONING COMMITTEE ADOPTED THIS FORM ON 12/2/1982

CORNER CODE V-9

FU605 ^

(B) Describe any record evidence, monument evidence, occupational evidence, testimonial evidence or any other material evidence you considered, and whether the monument was found or placed.

1836 (AUG) BURNHAM NORTH BETWEEN SECTIONS 28 & 29  
384.12 BUR OAK 12 IN DI  
2640 SET 1/4 SEC POST YELLOW OAK 18 N72 1/2W  
934.56' W. OAK 16 S50 1/2W 466.62 FIRST  
RATE W YELLOW & BUR OAK OPENINGS & DRY  
PRAIRIE  
3300 ENTER DRY PRAIRIE  
5280 SET POST COR TO 20,21,28 & 29 BUR OAK 16  
N8 1/2E 934.56' BUR OAK 8 N50 1/2W 466.62'  
FIRST RATE W., YELLOW, BUR OAK OPENINGS &  
DRY PRAIRIE

1836 (AUG) BURNHAM EAST RANDOM BETW SECS 29 & 32  
2442 ENTER DRY PRAIRIE  
3300 LEAVE SAME  
5214 INT. EAST BOUNDY 6.6' SOUTH FIRST RATE  
BUR OAK OPENINGS & DRAY PRAIRIE  
WEST CORRECTED BETWN SEC 32 & 29  
NO STATIONS  
2607 SET 1/4 SEC POST BUR OAK 12 N12 1/2E  
107.58' NO OTHER BEARING  
4955.28 BUR OAK 10 IN DIA  
5214 TO CORNERS

1836 (AUG) BURNHAM EAST RANDOM BETWN SEC 28 & 33  
5237.1 INT. EAST BOUNDY 23.76'? N FIRST RATE W &  
Y & BUR OAK OPENINGS  
WEST CORRECTED BETWN 28 & 33  
BUR OAK 12 IN DI  
2618.22 SET 1/4 SEC POST BUR O 14 N29E 15.84' BUR  
O 16 S56W 40.26'  
NO STATIONS  
5237.1 TO CORNERS

1836 (AUG) BURNHAM NORTH BETWEEN SECS 32 & 33  
DRY RICH PRAIRIE  
825 LEAVE PRAIRIE  
2640 SET 1/4 SEC POST W. OAK 12 S28E 25.08' W.  
OAK 14 N48W 45.54'  
3302.64 Y. OAK 12 IN DIA  
5280 SET POST COR TO 28,29,32, & 33 BUR OAK 16  
N27 1/2E 29.04' BUR OAK 12 S52W 9.9' FIRST  
RATE W. Y. & BUR OAK OPENINGS

1864 LOCKE VOL 1 PG 201 & #6570 FD STUMP OF SOUTH B TREE  
VAR 7-50 2650.56 TO E 1/4 COR SEC 32 & VAR 7-45 2641.26  
TO N 1/4 COR SEC 32

1870 RUGER VOL 2 PG 27 FD REMAINS OF OLD STAKE. ALSO FD  
STUMP OF NORTH BEARING TREE. SET STAKE AND  
SURROUNDED IT WITH 4 HARD HEAD STONES. VAR7-36  
2637.36 TO N 1/4 COR SEC 33

1884 RUGER VOL 2 PG 380 FD STAKE SURROUNDED BY 4 HH SET  
IN PLACE L.S. 20X6X3 AND SURROUNDED BY 4 HH. VAR 5-55  
2624.16 TO S 1/4 COR SEC 29 & VAR 4-19 2654.85 TO E 1/4  
COR SEC 29

1964 SHIMEALL #1454 FD L.S. ANGLE 89-51-30 @ E 1/4 COR SEC 32  
FROM E/W LINE OF SEC 32 TO NE COR SEC 32

1976 NORTHROP #1418 C.I. 1306.3 EASTERLY OF CENTER OF  
GRAVEL RD. 2626.80 TO N 1/4 COR SEC 32. SET 1" PIPE ON  
LINE & MIDWAY BETWEEN N 1/4 COR & NE CORNER OF SEC 32.

1985 BARNES V-11 2640.06 TO N 1/4 COR SEC 33. N 1/4 COR SEC 33  
IS ON LINE WITH NW & NE CORNERS OF SEC 33

1985 BARNES VOL 6 PG 344 FD C.I. 2640.06 TO N 1/4 COR SEC 33.  
ANGLE 89-38-35 @ N 1/4 COR SEC 33 FROM FD PK AT CEN OF  
SEC 33 TO NW COR SEC 33

PAGE 1 OF 3  
CORNER CODE V-9

Donald Barnes  
11/29/07

FU605

1985 NORTHROP #13744 & #7421 C.I. NO-36-54E 2659.92 TO W  
¼ COR SEC 28 & N89-21-11E 2640.06 TO S ¼ COR SEC 28  
1988 SCHROEDER GSM VOL 13 PG 406 STATES NOTHING ABOUT  
MON. PIPE ON LINE OF NE ¼ OF SEC 32 580.50 SOUTHERLY  
OF NE COR SEC 32.  
1988 SCHROEDER #12549 CALLS FOR COR BUT STATES NOTHING  
ABOUT IT. 1272.16 EAST OF EAST R/W LINE OF WILLIAMS  
ROAD. IRON PIN SET WEST 146.66  
1991 COMBS #11816 MORTGAGE INSPECTION. FD CAST IRON MON  
1993 COMBS GSM VOL 16 PG 207 FD C.I 2662.91 TO W ¼ COR SEC  
33.  
1995 COMBS GSM VOL 18 PG 284 FD C.I 2662.91 TO W ¼ COR SEC  
33.  
2000 NORTHROP #7634 CAST IRON MONUMENT 2640.06 TO S ¼  
COR SEC 28, 2659.92 TO W ¼ COR SEC 28, ANGLE 88-43-17  
@ SW COR SEC 28 FROM W ¼ COR TO S ¼ CORNERS SEC 28,  
ANGLE 180-00-00 @ S ¼ COR SEC 28 FROM SE TO SW  
CORNERS SEC 28  
2002 NORTHROP #14234 CAST IRON MON. 2640.06 TO S ¼ COR  
SEC 28. ANGLE OF 180-00-00 @ S ¼ COR SEC 28 FROM SE  
TO SW CORNERS SEC 28

FD CI. MON. 8" ABOVE GROUND. FD CARSONITE POST ON NEXT TO  
CI.

C) Was the corner restored through acceptance of (1) an obliterated evidence location, or, (2) a found  
perpetuated location?

ACCEPTED FD CI.

D) Describe any material discrepancy between the location of the corner as restored or reestablished  
and the location of that corner as previously restored or reestablished by distance and direction. Show  
the discrepancy on the plan view drawing under (a), above. Show the distances between the corner as  
previously restored or reestablished and (1) the corner as restored or reestablished, and (2) to at least 4  
of the witness monuments shown on the drawing in (a), above.

(E) Was the corner reestablished through lost corner proportionate methods? If so, show the method,  
including the directions and distances to other public land survey corners used as evidence or used for  
proportioning the corner location.

I, **Donald Barnes**, hereby certify that the corner location as identified by the corner code index  
was determined by me under my direction and control and that this U.S. Public Land Survey  
Monument Record is correct and complete to the best of my knowledge and belief.

Seal  
*Donald Barnes*  
Emboss  
*Barnes*

11/29/07

SHEET 2 OF 3

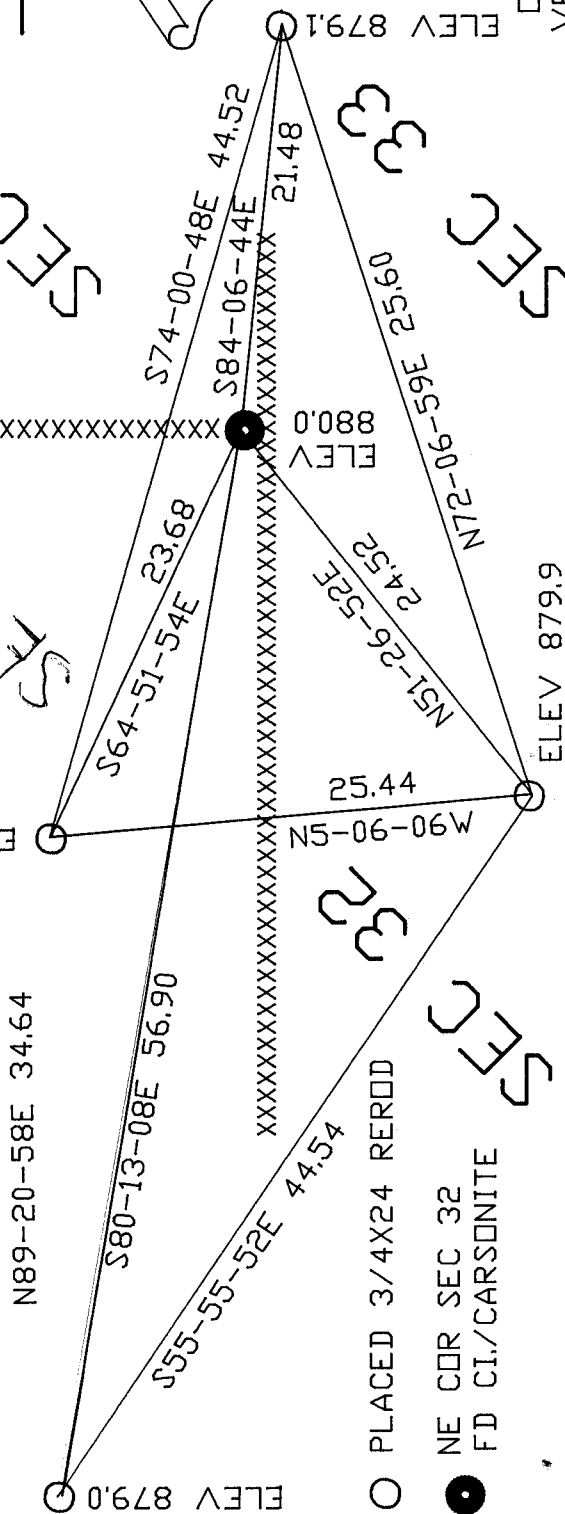
CORNER CODE

**V-9**

A.E. 7.08 REQUIREMENT

EMBOSSSED SEAL  
*Donal Baues*  
 11/29/07

FULTON TWP  
 T4N R12E



SHEET 3 OF 3

V I D

○ PLACED 3/4X24 REROD

● NE COR SEC 32  
 FD CI./CARSONITE

NOT TO SCALE

OBSERVATION SHEET #180  
 VERTICAL DATUM BASED  
 ON DIGITAL PHOTO.

