

Paper weight-110# (minimum)

Black nonfading ink required

U.S. PUBLIC LAND SURVEY MONUMENT RECORD

For Public Land Survey Corners In:

WI ADMINISTRATIVE CODE A-E 7.08 REQUIREMENT

T. 4 N. R. 12 E. 4th P.M.

REV 10/23/2004

USMONREC.DWG

CORNER CODE INDEX

FULTON TWP

ROCK COUNTY WI

IF AVAILABLE

ROCK COUNTY COORDINATES PREFERRED

A	1	2	3	4	5	6	7	8	9	10	11	12	13	14	15	16	17	18	19	20	21	22	23	24	25	A
B																										B
C																										C
D																										D
E																										E
F																										F
G																										G
H																										H
J																										J
K																										K
L																										L
M																										M
N																										N
O																										O
P																										P
Q																										Q
R																										R
S																										S
T																										T
U																										U
V																										V
W																										W
X																										X
Y																										Y
Z																										Z

North _____ Elev. _____

East _____

Hor. Datum _____ Vert. Datum _____

LATITUDE _____ ELLIPS. HT. _____

LONGITUDE _____

NAD83(91) _____ NETWORK ADJ. YR _____

GPS (X) _____ TRAVERSE (X) _____

BASED ON THE FOLLOWING CONTROL:

PLACE MONUMENT SYMBOL AT PROPER LOCATION ON ABOVE INDEX

CORNER MONUMENT

WITNESS MONUMENT

BEARINGS ARE BASED ON: (a) _____

FIELD BOOK _____ PAGE # _____

SHEET 1 OF 2

SHOW A PLAN VIEW DRAWING DEPICTING THE CORNER MONUMENT AND SURROUNDING PHYSICAL FEATURES, INCLUDING THE EXCAVATION AREA AND DEPTH.

PLANNING & ZONING COMMITTEE ADOPTED THIS FORM ON 12/2/1982

CORNER CODE C-19

FU4518 GEN SEC 2

(B) Describe any record evidence, monument evidence, occupational evidence, testimonial evidence or any other material evidence you considered, and whether the monument was found or placed.

1985 SCHROEDER #13604 STATES NOTHING ABOUT MON. S89-16-55E 100.0X TO PROPERTY COR, SOUTH 946.00 TO PROPERTY COR, 2625.80 TO S 1/4 COR SEC 2, ANGLE 89-16-55 @ CENTER OF SEC 2 FROM E 1/4 TO S 1/4 COR SEC 2.

1986 SCHROEDER #13374 STATES NOTHING ABOUT MON. S89-16-55E 100.0X TO PROPERTY COR, SOUTH 946.00 TO PROPERTY COR, 2625.80 TO S 1/4 COR SEC 2, ANGLE 89-16-55 @ CENTER OF SEC 2 FROM E 1/4 TO S 1/4 COR SEC 2.

1989 NORTHROP CSM VOL 13 PG 498 COMPUTED LOCATION OF CENTER OF SEC 2 AS PREVIOUSLY SET BY O. SCHROEDER. S89-55W 100.0X TO A FD REROD, N89-55W 49.0X TO TOP OF BENT REROD, SO-39-25E 1312.7X +/- TO FD BOLT FROM PREVIOUS SURVEY (DRAWING SHOWS IT NORTH OF CENTER OF STH 59), SO-39-25W FROM BOLT 1312.72 TO CI @ S 1/4 COR SEC 2.

1997 NORTHROP #08449 ANGLE 90-03-32 @ S 1/4 COR SEC 2 FROM SW 2 TO CENTER OF SEC 2,

1997 SCHROEDER CSM 20 PG 74 CALLS FOR N/S 1/4 LINE SEC 2. STATES NOTHING ABOUT CORNER

SEARCHED AND FOUND NOTHING AT THE CENTER OF THE SECTION.

C) Was the corner restored through acceptance of (1) an obliterated evidence location, or, (2) a found perpetuated location?

NO. ACCEPTED THE INTERSECTION OF THE 1/4 LINES.

D) Describe any material discrepancy between the location of the corner as restored or reestablished and the location of that corner as previously restored or reestablished by distance and direction. Show the discrepancy on the plan view drawing under (a), above. Show the distances between the corner as previously restored or reestablished and (1) the corner as restored or reestablished, and (2) to at least 4 of the witness monuments shown on the drawing in (a), above.

I USED THE MONUMENTS OF RECORD BY SCHROEDER AND NORTHROP TO COMPUTED THEIR LOCATION. THIS LOCATION DOES NOT FIT THE INTERSECTION OF THE 1/4 LINES. I DID NOT ACCEPT THE CENTER AS ESTABLISHED BY SCHROEDER AND USED BY NORTHROP.

(E) Was the corner reestablished through lost corner proportionate methods? If so, show the method, including the directions and distances to other public land survey corners used as evidence or used for proportioning the corner location.

NO

I, Donald Barnes, hereby certify that the corner location as identified by the corner code index was determined by me under my direction and control and that this U.S. Public Land Survey Monument Record is correct and complete to the best of my knowledge and belief.

Seal
Donald

Emboss
Barnes

11/03/2007

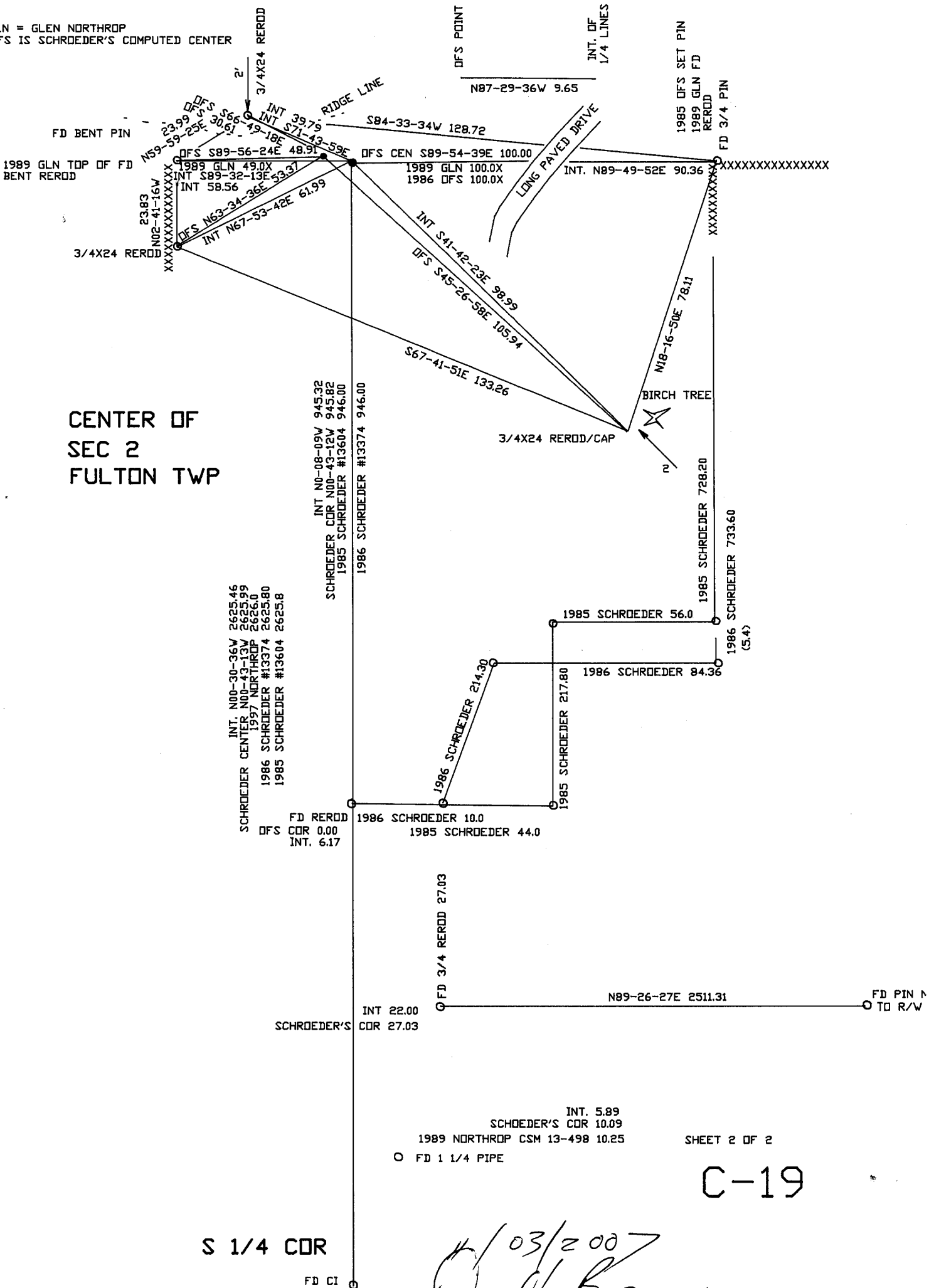
SHEET 1 OF 2

CORNER CODE

C-19

A.E. 7.08 REQUIREMENT

GLN = GLEN NORTHROP
 DFS IS SCHROEDER'S COMPUTED CENTER



CENTER OF
 SEC 2
 FULTON TWP

INT. N00-30-36W 2625.46
 SCHROEDER CENTER N00-43-13W 2625.99
 1997 NORTHROP 2622.00
 1986 SCHROEDER #13374 2625.80
 1985 SCHROEDER #13604 2625.8

INT N0-08-09W 945.32
 SCHROEDER COR N00-43-12W 945.82
 1985 SCHROEDER #13604 946.00
 1986 SCHROEDER #13374 946.00

FD REROD
 DFS
 COR 0.00
 INT. 6.17

1986 SCHROEDER 10.0
 1985 SCHROEDER 44.0

Q FD 3/4 REROD 27.03

INT 22.00
 SCHROEDER'S
 COR 27.03

INT. 5.89
 SCHROEDER'S COR 10.09
 1989 NORTHROP CSM 13-498 10.25
 O FD 1 1/4 PIPE

SHEET 2 OF 2

C-19

S 1/4 COR

FD CI

03/2007
Donal Barnes