

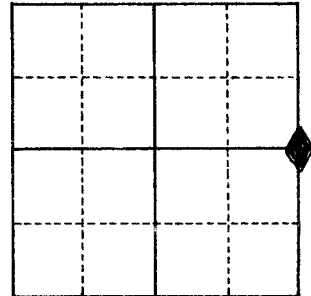
U.S. PUBLIC LAND SURVEY MONUMENT RECORD

For Public Land Survey Corners in the
MILTON T. 4 N., R. 13 E.

For Miscellaneous Corners within Sec.
5, T. 4 N., R. 13 E.

CORNER CODE INDEX

	1	2	3	4	5	6	7	8	9	10	11	12	13	14	15	16	17	18	19	20	21	22	23	24	25
A																									
B																									
C	6																								
D																									
E																									
F																									
G	7																								
H																									
J																									
K																									
L	18																								
M																									
N																									
O																									
P	19																								
Q																									
R																									
S																									
T	30																								
U																									
V																									
W																									
X	31																								
Y																									
Z																									



- Above code numbers are positioned Meander, Claim, or Fractional corners of the section.
- Township corner code numbers shall be applied to the corners of above typical section.

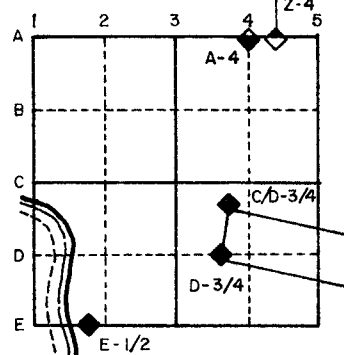
PLACE MONUMENT SYMBOL (◆) AT PROPER LOCATION ON ABOVE INDEX

IF AVAILABLE
STATE PLANE COORDINATES

North (Y) 307,608.39 Eleve. (Z) 783.1
East (X) 2,275,229.65 Zone SOUTH
Hor. Datum _____ Vert. Datum _____

BASED ON AEROMETRIC PHOTO CONTROL

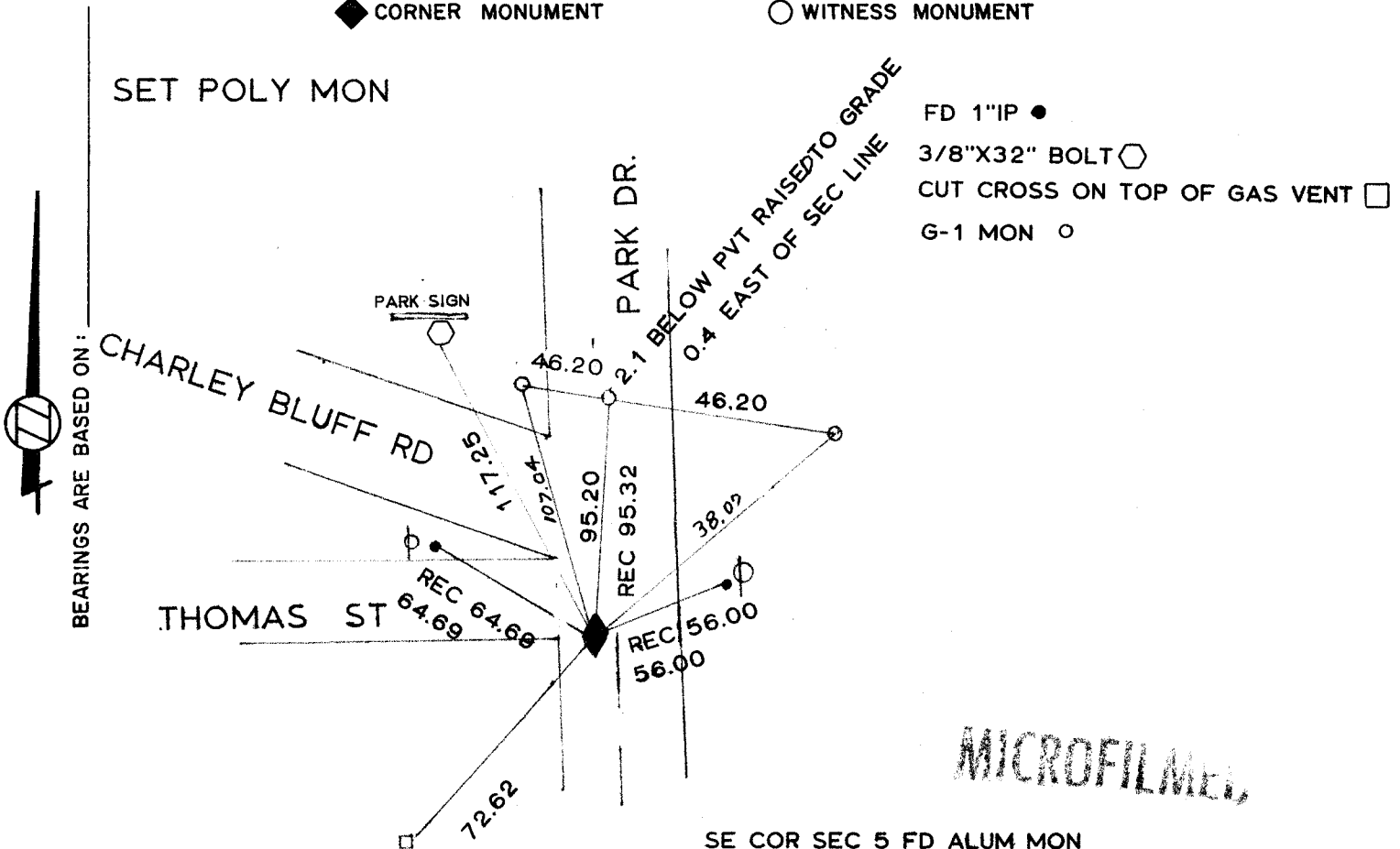
EXAMPLE



◆ CORNER MONUMENT

○ WITNESS MONUMENT

SET POLY MON



MICROFILMED

SE COR SEC 5 FD ALUM MON

SHOW A PLAN VIEW DRAWING DEPICTING THE CORNER MONUMENT AND SURROUNDING PHYSICAL FEATURES, INCLUDING THE EXCAVATION AREA AND DEPTH. THE CORNER MONUMENT SHALL HAVE THE FOLLOWING CHARACTERISTICS: 1) HAVE AT LEAST TWO PREDETERMINED BREAK-OFF POINTS. 2) IF BROKEN, LEAVE A PERMANENTLY MAGNETIZED REMNANT AT THE ORIGINAL POINT. 3) MUST BE EXTENDABLE. 4) THE CAP IS INSCRIBED: ROCK COUNTY SURVEY MONUMENT - PENALTY FOR DISTURBING MARKER. 5) OR AN EXISTING CUT LIMESTONE. AN IRON PIPE 1 1/2" x 4'0" (MINIMUM) WITH AT LEAST 4 DURABLE WITNESS MONUMENTS MAY BE USED IN AREAS WHERE GROUND WATER IS WITHIN 1.0' OF THE SURFACE. IF THE CORNER IS OCCUPIED BY AN IMPROVEMENT (MANHOLE, BURIED CABLE, ETC.), ANY DURABLE, DISTINCT MONUMENT MAY BE USED AND REFERENCED WITH AT LEAST 4 DURABLE WITNESS MONUMENTS.

CORNER CODE: C-9

1. Describe any record evidence, monument evidence, occupational evidence, testimonial evidence or any other material evidence you considered and whether the monument was found or set.

1. IN THE LATE 1800s RUGER REMONUMENTED THE TOWNSHIP WITH CUT LIMESTONES.
HIS PLAT OF THE TOWNSHIP IS RECORDED IN THE REGISTER OF DEED OFFICE. THE
FIELD NOTES HAVE NOT BEEN FOUND.

2. IN 1938 FOUND THE STONE & SET A 1 1/2" CAPPED IRON PIPE

3. IN 1971 LEE DUG & FOUND THE IP . HE SET & REFERENCED THE CORNER

4. IN 1982 I SET A POLY MON USING THE REFERENCE TIES.

2. Describe any material discrepancy between the location of the corner as restored or re-established and the location of that corner as previously restored or re-established.

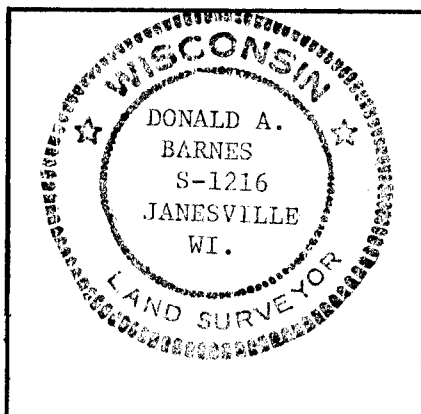
3. Was the corner restored through acceptance of an obliterated evidence location or a found perpetuated location.

YES

4. Was the corner re-established through lost corner proportionate methods? If so, show the method, including directions and distances to other public land survey corners used as evidence or used for proportioning in determination of the corner location.

NO

I, Donald Barnes, hereby certify that the corner points as identified by the corner code index were, in a field survey on AVG 4 1982, established, re-established, monumented, re-monumented, recovered or restored as expressed below and in conformance with the regulations and rules as required in the current manual of survey instructions of the United States Department of Interior, Bureau of Land Management.



COUNTY SURVEYOR FILING DATA
Date of Computer Entry _____
Date Received _____
Date Microfilmed _____
Treasurer's Receipt No. _____
Number of Included Sheets _____

AFFIX YOUR LAND SURVEYOR SEAL. C9