

U.S. PUBLIC LAND SURVEY MONUMENT RECORD

For Public Land Survey Corners in: T. 4 N., R. 12 E 4th P.M.
CORNER CODE INDEX

WI ADMINISTRATIVE CODE A-E 7.08 REQUIREMENT

	1	2	3	4	5	6	7	8	9	10	11	12	13	14	15	16	17	18	19	20	21	22	23	24	25
A																									
B																									
C																									
D																									
E																									
F																									
G																									
H																									
I																									
J																									
K																									
L																									
M																									
N																									
O																									
P																									
Q																									
R																									
S																									
T																									
U																									
V																									
W																									
X																									
Y																									
Z																									

FULTON TWP
ROCK COUNTY, WI

IF AVAILABLE
ROCK COUNTY COORDINATES PREFERRED

North 291,488.10 Elev. _____

East 2,212,171.54

Hor. Datum NAD83(91) Vert. Datum _____

LATITUDE _____ ELLIPS. HT. _____

LONGITUDE _____

ELLIPS. DATUM

NAD83(91) _____ COUNTY _____ LIST _____

GPS (X) X B-T^H TRAVERSE (X) X

BASED ON THE FOLLOWING CONTROL:

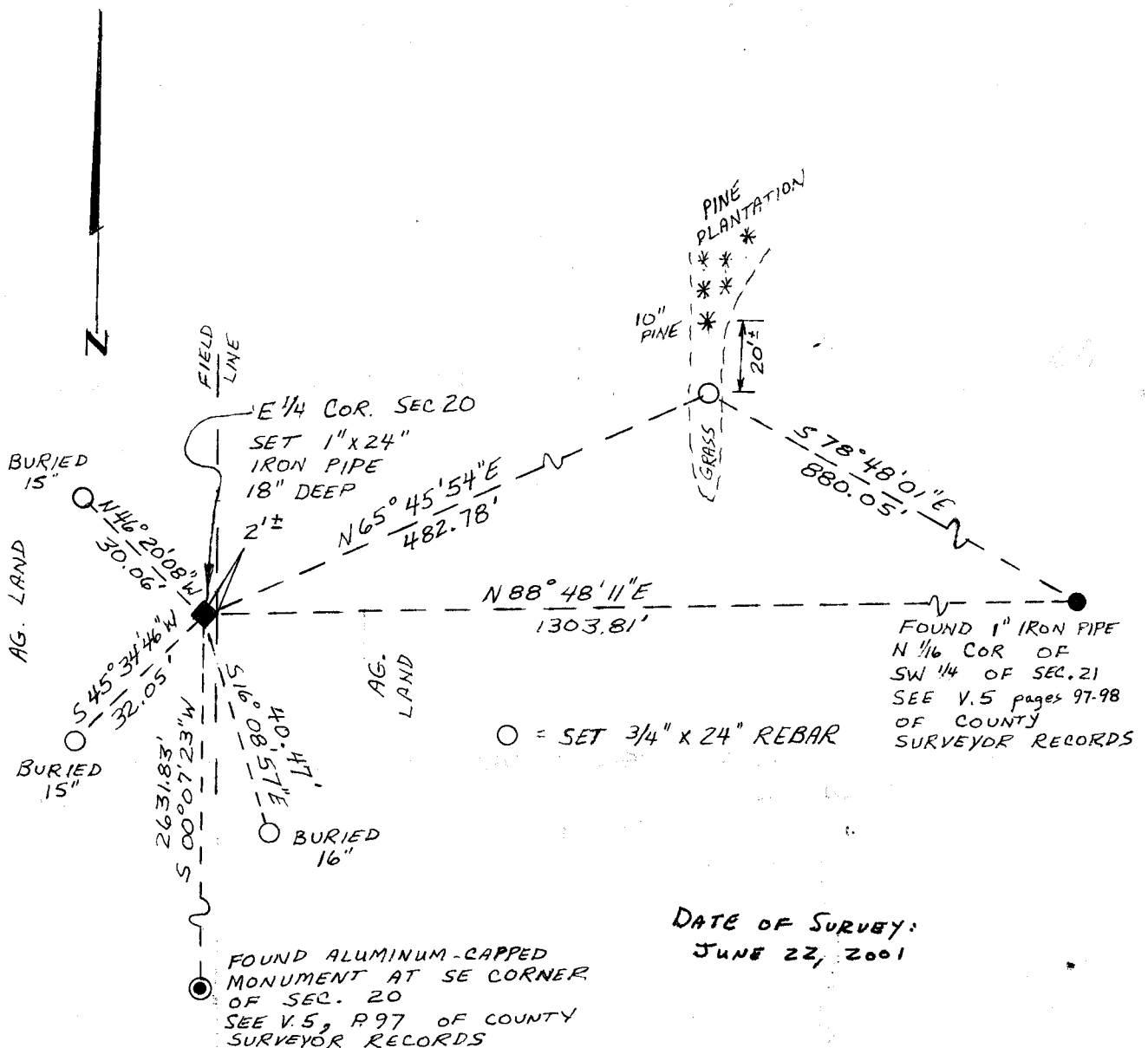
FULTON CENTER GPS STA 303S
" " " AZ. MK 303A

PLACE MONUMENT SYMBOL \blacklozenge AT PROPER LOCATION ON ABOVE INDEX

\blacklozenge CORNER MONUMENT
1" I.D. x 24" IRON PIPE SET

\circ WITNESS MONUMENT
3/4" x 24" REBAR SET

BEARINGS ARE BASED ON: GRID NORTH - W/LS - SOUTH ZONE



DATE OF SURVEY:
JUNE 22, 2001

FIELD BOOK _____ PAGE # _____ SHEET _____ OF _____

SHOW A PLAN VIEW DRAWING DEPICTING THE CORNER MONUMENT AND SURROUNDING PHYSICAL FEATURES, INCLUDING THE EXCAVATION AREA AND DEPTH.

PLANNING & ZONING COMMITTEE ADOPTED THE ABOVE FORM ON 12/21/1982

CORNER CODE P-009

B) Describe any record evidence, monument evidence, occupational evidence, testimonial evidence or any other material evidence you considered, and whether the monument was found or placed.

I SET A 1"X24" IRON PIPE (BURIED 18") AT THE EAST 1/4 CORNER OF SEC. 20, T4N, R12E, USING THE DISTANCES FROM THE SE CORNER OF SEC. 20 AND THE N 1/16 CORNER OF THE SW 1/4 OF SEC. 21 AS SHOWN IN VOL. 5, P. 97 OF COUNTY SURVEYOR RECORDS BY DONALD BARNES ON JAN. 22, 1970. I COULD NOT FIND THE MONUMENT SET BY MR. BARNES. I EXCAVATED 1.7' DEEP ABOUT 1.5 IN ALL DIRECTIONS AROUND THIS LOCATION AND STILL HEARD NOTHING WITH THE METAL DETECTOR. THE FARMER WHO OWNS THE LAND TO THE EAST TOLD ME HE THOUGHT THE MONUMENT WAS REMOVED DURING FENCE REMOVAL.

C) Was the corner restored through acceptance of (1) an obliterated evidence location, or, (2) a found perpetuated location?

OBLITERATED EVIDENCE LOCATION

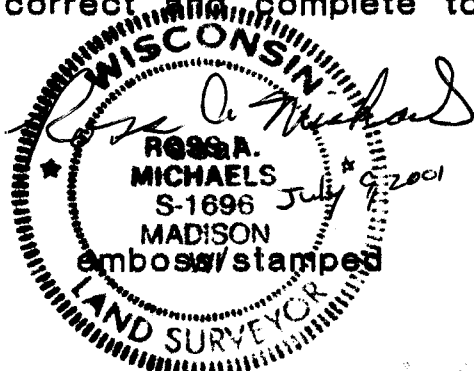
D) Describe any material discrepancy between the location of the Corner as restored or reestablished and the location of that corner as previously restored or reestablished by distance and direction. Show the discrepancy on the plan view drawing under (a), above. Show the distances between the corner as previously restored or reestablished and (1) the corner as restored or reestablished, and (2) to at least 4 of the witness monuments shown on the drawing in (a), above.

NO KNOWN DISCREPANCIES

E) Was the corner reestablished through lost corner proportionate methods? If so, show the method, including the directions and distances to other public land survey corners used as evidence or used for proportioning the corner location.

No.

I, Ross A. Michaels, hereby certify that the corner location as identified by the corner code index was determined by me under by direction and control and that this U.S. Public Land Survey Monument Record is correct and complete to the best of my knowledge and belief.



Number of included sheets _____

A-E 7.08 REQUIREMENT

CORNER CODE

P-009