

U.S. PUBLIC LAND SURVEY MONUMENT RECORD

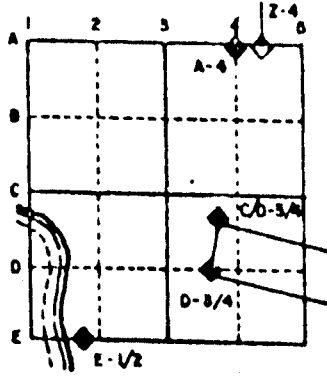
For Public Land Survey Corners in the
T. 4 N., R. 12 E.

CORNER CODE INDEX

	1	2	3	4	5	6	7	8	9	10	11	12	13	14	15	16	17	18	19	20	21	22	23	24	25
A																									
B																									
C	6																								
D		5																							
E			4																						
F				3																					
G					2																				
H																									
I																									
J	7																								
K		8																							
L			9																						
M				10																					
N					11																				
O						12																			
P	18																								
Q		17																							
R			16																						
S				15																					
T					14																				
U						13																			
V							12																		
W								11																	
X									10																
Y										9															
Z											8														

PLACE MONUMENT SYMBOL (◆) AT PROPER LOCATION ON ABOVE INDEX

EXAMPLE



FULTON TWP
ROCK COUNTY WI

IF AVAILABLE
STATE PLANE COORDINATES

North (Y) _____ Eleve. (Z) _____
 East (X) _____ Zone _____
 Hor. Datum _____ Vert. Datum _____

◆ CORNER MONUMENT

○ WITNESS MONUMENT

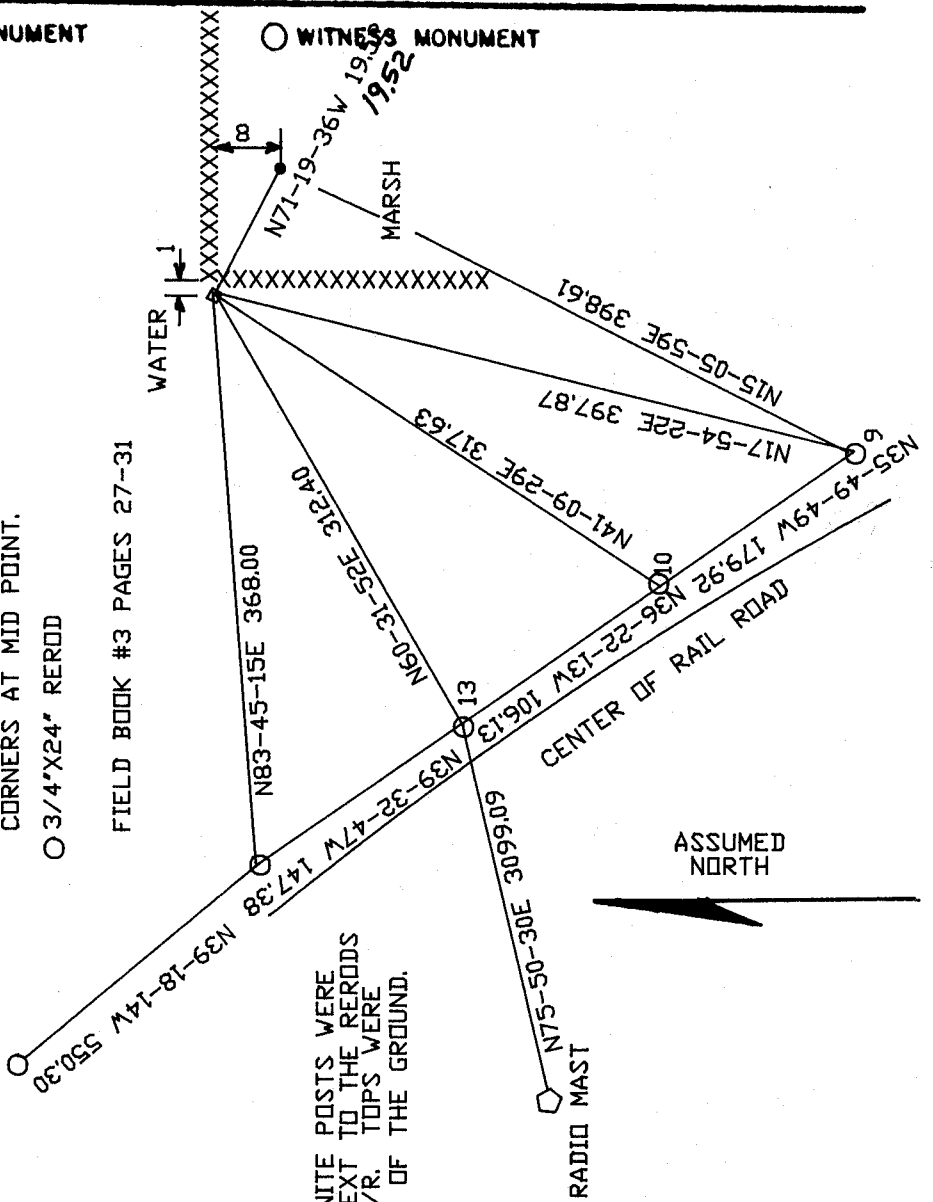
BEARINGS ARE BASED ON:

BERNTSEN GPS 3-D MONUMENT
 72" LONG WITH ROCK COUNTY CAP & CARSONITE POST.
 POINT IS ON LINE WITH NE & NW
 CORNERS AT MID POINT.
 ○ 3/4" X 24" REROD

FIELD BOOK #3 PAGES 27-31

1/2" X 24" REROD TOP OF
 HILL NEAR POLE

7' CARSONITE POSTS WERE
 DRIVEN NEXT TO THE RERODS
 BY THE R/R. TOPS WERE
 WITHIN 2' OF THE GROUND.



ASSUMED NORTH

MICROFILMED

SHEET 1 OF 1

CORNER CODE: N19

(B) Describe any record evidence, monument evidence, occupational evidence, testimonial evidence or any other material evidence you considered, and whether the monument was found or placed.

- 1836 BURNHAM. ORIGINAL GOVERNMENT SURVEYOR. SET 1/4 SECTION POST. WILLOW 6 S 42 1/2 W 69.3' NO OTHER BEARING TREES. SHOWS 2620.2' TO THE SE AND SW CORNERS OF SECTION 14.
- 1859 WARRANTY DEED BOOK 44 PG 236. CALLS FOR A 99' RAILROAD RIGHT OF WAY AND STATES THAT THE CENTER IS THE CENTER OF THE EXISTING RAILS.
- 1885 RUGER VOL 2 PG 383. FOUND STAKE AND CLUMP OF 4 WILLOWS GROWN UP AROUND OLD WILLOW STUMP. SHOWS A DISTANCE OF 606.87' TO A STAKE AT THE INTERSECTION OF THE N/S QUARTER LINE AND THE SOUTH R/W LINE OF THE RAILROAD. ALSO SHOWS 5308.05 TO THE SOUTH QUARTER CORNER OF SECTION 23.
- 1918 RAIL ROAD PLANS SHOWS A FENCE INTERSECTION THAT IS 407 EAST OF THE CENTER OF THE RAILS AND 533 NORTH OF THE CENTER OF THE RAILS.
- 1949 SUNNY PLAT OF SURVEY IN SECTION 13 & 14. PLACED 1 1/2 X 5' PIPE SURROUNDED IT WITH GRAVEL. SHOWS THE PIPE 1x3 WEST OF THE FENCE INTERSECTION AND A DISTANCE OF 2658 TO THE SE CORNER OF SECTION 14 AND 2674 TO THE CENTER OF SECTION 14. *1/29/97 NORTH OAB*

I FOUND A 1 1/2" IRON PIPE THAT IS ABOUT 3' ABOVE THE WATER AND ABOUT 1 WEST OF THE FENCE INTERSECTION.

ON SITE CONDITIONS INDICATE THAT THE RAIL ROAD TIES WERE REPLACED AND THE RAIL ROAD BED WAS REFURBISHED. I MEASURED THE CENTER OF THE EXISTING RAILS AND DETERMINED THAT THE RAIL ROAD CURVE HAD A RADIUS OF 5609.35' AND USED THIS TO COMPUTE THE SOUTH RIGHT OF WAY. THE DISTANCE FROM THE INTERSECTION OF THE SOUTH QUARTER CORNER OF SECTION 23 TO THE MIDPOINT OF A LINE BETWEEN THE NW AND NE CORNERS OF SECTION 23 AND THE RIGHT OF WAY IS 663.17. THE DISTANCE FROM THE INTERSECTION OF THE SOUTH QUARTER CORNER OF SECTION 23 TO THE FOUND PIPE WITH THE SOUTH RIGHT OF WAY IS 645.56. RUGER'S DISTANCE IS 606.87'. THEREFORE AS THE POSITION OF THE NORTH QUARTER CORNER OF SECTION 23 MOVES TO THE WEST THE DISTANCE TO THE SOUTH RAIL ROAD RIGHT OF WAY APPROACHES RUGER'S RECORD DISTANCE. THE DISTANCE FROM THE SOUTH QUARTER CORNER TO THE FOUND PIPE AT THE SOUTH QUARTER CORNERS OF SECTION 23 IS 5301.51 AND 5295.25 TO THE SINGLE PROPORTIONATE POINT. RUGER'S DISTANCE WAS 5308.05.

I ACCEPTED THE FOUND PIPE BECAUSE IT IS IN HARMONY WITH THE OCCUPATION LINE, WITH RUGER'S RECORD DISTANCES TO THE SOUTH QUARTER CORNER OF SECTION 23, AND THE SOUTH RIGHT OF WAY LINE THAN THE SINGLE PROPORTIONATE DISTANCE BETWEEN THE NE AND NW CORNERS OF SECTION 23.

C) Was the corner restored through acceptance of (1) an obliterated evidence location, or, (2) a found perpetuated location?

I ACCEPTED FOUND PERPETUATED LOCATION.

I, Donald Barnes, hereby certify that the corner points as identified by the corner code index were, in a field survey on, April 10, 1990, established, re-established, monumented, re-monumented, recovered or restored as expressed below and in conformance with the regulations and rules as required in the current manual of survey instructions of the United States Department of Interior, Bureau of Land Management.

COUNTY SURVEYOR FILING DATA

Date of computer entry _____

Date microfilmed _____

Number of included sheets _____
CORNER CODE

AFFIX YOUR LAND SURVEYOR SEAL

N19