

# U.S. PUBLIC LAND SURVEY MONUMENT RECORD

For Public Land Survey Corners In:

WI ADMINISTRATIVE CODE A-E 7.08 REQUIREMENT

T. 4 N. R. 12 E.

CORNER CODE INDEX

1	2	3	4	5	6	7	8	9	10	11	12	13	14	15	16	17	18	19	20	21	22	23	24	25	
A																									A
B																									B
C	6					5				4				3				2				1			C
D																									D
E																									E
F																									F
G	7					8				9				10				11				12			G
H																									H
J																									J
K	18					17				16				15				14				13			K
L																									L
M																									M
N																									N
O																									O
P	19					20				21				22				23				24			P
Q																									Q
R																									R
S																									S
T	30					29				28				27				26				25			T
U																									U
V																									V
W																									W
X	31					32				33				34				35				36			X
Y																									Y
Z																									Z

FULTON TWP  
ROCK COUNTY WI

IF AVAILABLE  
ROCK COUNTY COORDINATES PREFERRED

North 313,133,13 Elev. \_\_\_\_\_

East 474,785,26

Hor. Datum 1983(91) Vert. Datum \_\_\_\_\_

LATITUDE \_\_\_\_\_ ELLIPS. HT. \_\_\_\_\_

LONGITUDE \_\_\_\_\_

GPS (X)  TRAVERSE (X) \_\_\_\_\_

BASED ON THE FOLLOWING CONTROL:  
\_\_\_\_\_

PLACE MONUMENT SYMBOL  AT PROPER LOCATION ON ABOVE INDEX

CORNER MONUMENT

WITNESS MONUMENT

(a)

BEARINGS ARE BASED ON: \_\_\_\_\_

FIELD BOOK \_\_\_\_\_ PAGE # \_\_\_\_\_

SHEET 1 OF 3

SHOW A PLAN VIEW DRAWING DEPICTING THE CORNER MONUMENT AND SURROUNDING PHYSICAL FEATURES, INCLUDING THE EXCAVATION AREA AND DEPTH.

PLANNING & ZONING COMMITTEE ADOPTED THE ABOVE FORM ON 12/2/1982

CORNER CODE N9

FU565

(B) Describe any record evidence, monument evidence, occupational evidence, testimonial evidence or any other material evidence you considered, and whether the monument was found or placed.

- 1834 HARRISON NORTH BETWEEN SECS 20 & 21 PG 20
- 4884 LEAVE ROCK RIVER & SET MEANDER POST ON RIGHT BANK OF SAME {W OAK 12 N7E 63.36' WHITE OAK 18 N33W 49.5'}
- 5280 SET COR TO SECS 16,17,20,&21 RED OAK 18 S41E 7.92' RED OAK 12 S29W 14.52' WHITE OAK 20 N58W 47.52' WHITE OAK 12 N37E 33' LAND ROLLING 2<sup>ND</sup> RATE TIMBER MOSTLY WHITE OAK. GRASS & WEEDS.  
EAST BET. SECS 16 & 21 PG 20
- 346.5 INT. RIGHT BANK OF ROCK RIVER BEARING TO MEANDER POST {RED OAK 12 N13W 89.1' RED OAK 10 S73W 94.38' LAND SAME  
NORTH BETWEEN SECS 16 & 17 PG 21
- 1386 TRAIL N.E.
- 2640 QUARTER SEC. COR. {RED O. 10 S69E 16.5' RED O 12 N74W 68.64'}
- 3851.76 WD 20 IN DIAM
- 4720.98 RED O 12 IN DIAM
- 5280 COR TO SECS 8,9,16,17 {BURR O 24 S30W 93.26' RED OAK 12 N80E 64.02' BURR O 12 N24W 144.54' & BURR O 10 S10E 81.84' LAND LEVEL 2<sup>ND</sup> RATE TIMBER RED BURR & WHITE GRASS & WEEDS  
EAST ON RANDOM BET. 17 & 20 PG 24
- 369.6 TRAIL N.E.
- 2640 TEMPY 1/4 SEC COR.
- 5291.88 INT. E. BOUNDARY 13.2' N. O POST LAND ROLLING 2<sup>ND</sup> RATE TIMBER RED BURR & WHITE OAK. GRASS & WEEDS  
WEST COR. WEST BET. 17 & 20
- 2645.94 QUARTER SEC. COIR. {RED OAK 12 N35W 11.88' RED OAK 18 S70E 15.18'} {RED OAK 12 RED OAK 1} MARKED
- 5291.88 SEC COR
- 1836 BURNHAM NORTH BETWEEN SECS 20 & 21 PG 47
- 1716 LEFT PRAIRIE
- 4290 TRAIL CROSS NE & SW
- 4342.8 TO LEFT BANK R. RIVER
- 4934.16 INT. RIGHT BK 27.06' EAST OF MP FIRST RATE DRY PRAIRIE AND BUR & W.O. OPENINGS  
SOUTH CORRECTED BETW. SEC 20 & 21
- 600.6 SET MP ON LEFT BANK R. RIVER YELLOW OAK 8 S54 1/2E 9.9' WHITE OAK 16 S19 1/2W 35.64' NO STATIONS
- 2294.16 SET 1/4 SEC POST W. OAK 24 S57W 30.36 BUR OAK 16 N71E 21.12' BUR OAK 10 IN DIA.  
WEST RANDOM BETW SEC 16 & 21 PG 44
- 4158 TRAIL @ NE & SW
- 4237.2 LEFT BANK ROCK RIVER
- 4765.2 INT RIGHT BANK @ M. POST, FIRST RATE W & BUR OAK OPENINGS  
EAST CORRECTED BETW SECS 16 & 21
- 528 SET M.P. ON LEFT BANK W. OAK 8 N11E 15.84' BUR OAK 8 S21W 58.74' NO STATIONS
- 2125.2 SET 1/4 SEC POST BUR OAK 10 N10E 7.92' BUR OAK 12 S49E 16.5'
- 4765.2 TO CORNER
- 184? TOWNSHIP RD RECORDS VOL 6 PG 333. 194.04' SOUTH OF E/W RD, 2640 TO W 1/4 COR SEC 16.
- 1875 RUGER VOL 2 PG 197 FD L.S. SET COR. ALSO FD WHERE B.T. STUMPS HAD BEEN DUG OUT. EAST 346.5' TO MP. FD WHERE BT STUMPS HAD BEEN DUG UP. DROVE IRON PIN. LONG ONE. SURROUNDED BY 3 HH. SOUTH 396' TO MP. FD STUMPS OF STUMPS OF NW BT HAD BEEN DUG UP. DROVE STAKE SURROUNDED BY 3 HH.

01/10/2002  
Dando Brune

FU565

1875 RUGER VOL 2 PG 199 2654.19 TO W ¼ COR SEC 16.  
1933 SUNNY VOL 3 PG 231 FD STONE MON. SURROUNDED BY 4  
STONES SET BY RUGER. SET 1 ¼" IRON PIPE ON TOP OF SAME.  
1940 SUNNY VOL 3 PG 460 FD LIMESTONE MON. SURROUNDED  
BY 4 HH 20" LONG. SET 1 ¼" GAPPED IRON PIPE ON TOP.  
REFERENCED SAME TO TREES. SOUTH 30.7' TO IRON PIPE.  
1960 BATTERMAN VOL 4 PG 13 5287.08' TO NW COR SEC 20.  
1961 BATTERMAN VOL 4 PG 93 29.84' TO IRON PIPE TO SOUTH. 2  
PIPES SOUTH ABOUT 1.63' APART. SOUTH 395.25 TO MP. FD  
DECAYED STAKE SURROUNDED BY 3 HH DESCRIBED IN SURVEY  
BY RUGER IN VOL 2 PG 197. RESET ¾"X4' IRON PIN WHERE  
OLD STAKE WAS FD. AT MP.  
1962 ELY VOL 6 PG 42 2484.88 TO N ¼ COR SEC 21.  
1968 BATTERMAN FD 1 ½" PIPE BY SUNNY BENT OVER.  
REPLACED JULY 2 1965 AT SOUTH EDGE OF BLACK TOP. SW  
43.15', NW 62.17', NE 56.52' TO IRON PIPES.  
1976 BARNES VOL 5 PG 97 2483.68' TO N ¼ COR SEC 21 &  
2745.63' TO W ¼ COR SEC 21  
1980 BARNES VOL 6 PG 42 NO-33-38E 2656.20' TO W ¼ COR  
SEC 16.  
1981 BARNES VOL 6 PG 202 FD 1" IRON PIPE. REPLACED WITH  
ALUM. MON. FD 3 TIES & SHOWS RECORD DISTANCES.

FD ALUM. MON. & 3 REFERENCE TIES

C) Was the corner restored through acceptance of (1) an obliterated evidence location, or, (2) a found perpetuated location?

ACCEPTED FOUND PERPETUATED ALUM. MON. 889-05-52E  
2483.20' TO DISK IN MON. BOX AT N ¼ COR SEC 21

D) Describe any material discrepancy between the location of the corner as restored or reestablished and the location of that corner as previously restored or reestablished by distance and direction. Show the discrepancy on the plan view drawing under (a), above. Show the distances between the corner as previously restored or reestablished and (1) the corner as restored or reestablished, and (2) to at least 4 of the witness monuments shown on the drawing in (a), above.

(E) Was the corner reestablished through lost corner proportionate methods? If so, show the method, including the directions and distances to other public land survey corners used as evidence or used for proportioning the corner location.

I, Donald Barnes, hereby certify that the corner location as identified by the corner code index was determined by me under my direction and control and that this U.S. Public Land Survey Monument Record is correct and complete to the best of my knowledge and belief.

Seal

SHEET 2 OF 3

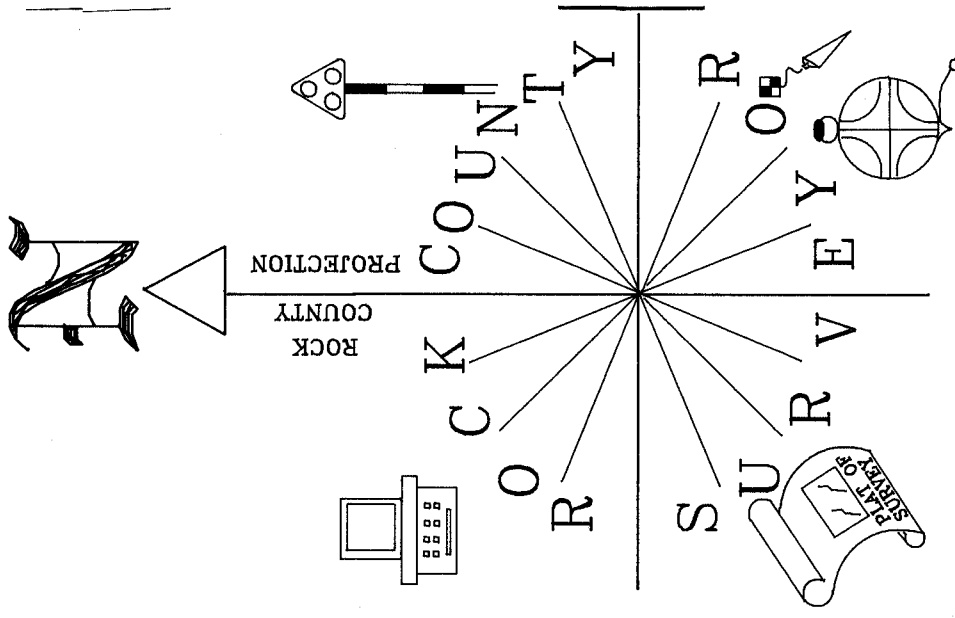
01/10/2002

Embosa

Donald Barnes

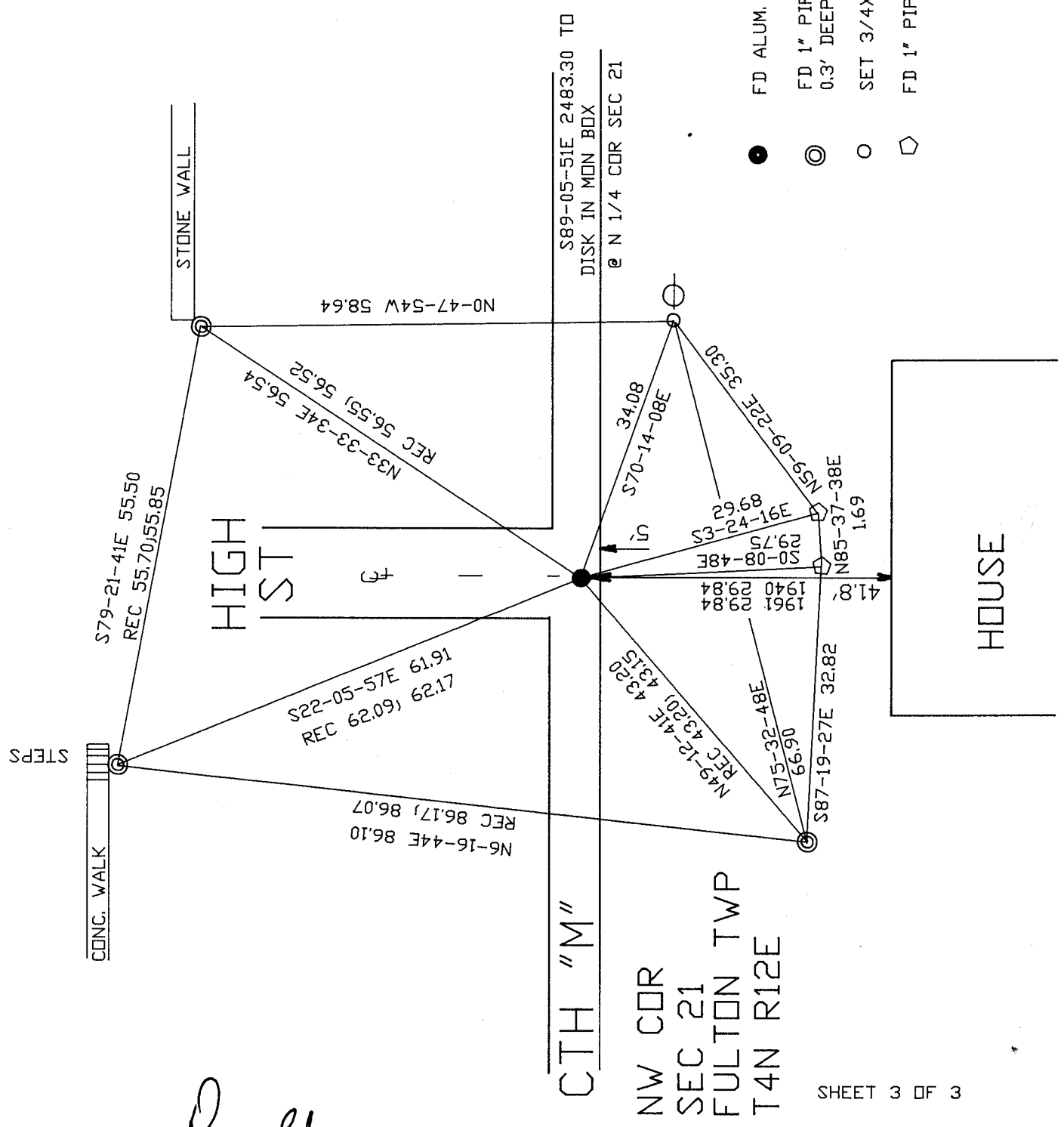
CORNER CODE **N-9**

A.E. 7.08 REQUIREMENT



NOT TO SCALE

FB HWY PROJECTS PG 38



- FD ALUM. MON.
- ⊙ FD 1" PIPE 0.3' DEEP
- SET 3/4X24 REROD/CAP
- ◇ FD 1" PIPE

Donald  
 Barnes  
 EMBOSSED  
 SEAL  
 1/10/2002

SHEET 3 OF 3

