

PUBLIC LAND SURVEY MONUMENT RECORD

For Public Land Survey Corners in the

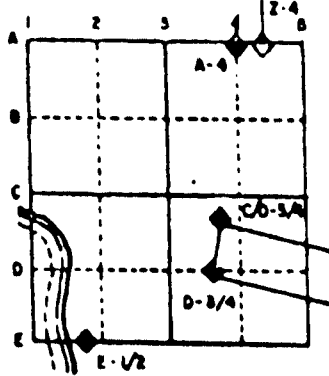
T. 3 N., R. 11 E.

CORNER CODE INDEX

	1	2	3	4	5	6	7	8	9	10	11	12	13	14	15	16	17	18	19	20	21	22	23	24	25
A																									
B																									
C																									
D																									
E																									
F																									
G																									
H																									
I																									
J																									
K																									
L																									
M																									
N																									
O																									
P																									
Q																									
R																									
S																									
T																									
U																									
V																									
W																									
X																									
Y																									
Z																									

PLACE MONUMENT SYMBOL (●) AT PROPER LOCATION ON ABOVE INDEX

EXAMPLE



CENTER TWP  
ROCK COUNTY WI

IF AVAILABLE  
STATE PLANE COORDINATES

North (Y) \_\_\_\_\_ Eleve. (Z) \_\_\_\_\_  
 East (X) \_\_\_\_\_ Zone \_\_\_\_\_  
 Hor. Datum \_\_\_\_\_ Vert. Datum \_\_\_\_\_

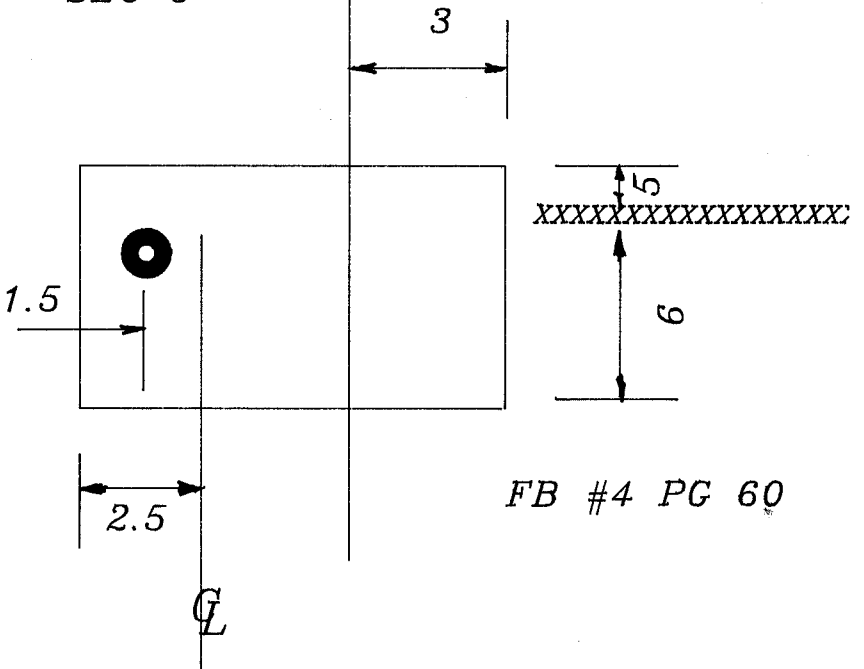
◆ CORNER MONUMENT

○ WITNESS MONUMENT

BEARINGS ARE BASED ON:

WEARY  
RD

CENTER  
SEC 6



FB #4 PG 60

SHEET \_\_\_\_\_ OF \_\_\_\_\_

CORNER CODE: C 3

(B) Describe any record evidence, monument evidence, occupational evidence, testimonial evidence or any other material evidence you considered, and whether the monument was found or placed.

1876 RUGER VOL 2 PG 219 DROVE STAKE AT INTERSECTION OF 1/4 LINES.  
1900 BROWN VOL 2 PG 520 SET STAKE & DRAG TOOTH SURROUNDED 4 WHITE BRICK. 2660.46 TO E 1/4 COR SEC 6.

DUG & FOUND WITHIN 1' OF THE PAVEMENT A DRAG TOOTH IN A HORIZONTAL POSITION. REPLACED DRAG TOOTH WITH 3/4 REROD AND MAGNETS. ON EAST SIDE OF HOLE FOUND REMAINS OF OLD E/W BARB WIRE FENCE. REROD IS ON LINE WITH E/W FENCE ON WEST SIDE OF RD & 1.5 SOUTH OF E/W FENCE ON EAST SIDE OF ROAD. SEE VOL 6 PG 441 FOR BEARINGS & DISTANCES TO 1/4 CORNERS.

C) Was the corner restored through acceptance of (1) an obliterated evidence location, or, (2) a found perpetuated location?

DID NOT ACCEPT FOUND DRAG TOOTH BECAUSE THERE WERE NO BRICKS AND THE DRAG TOOTH IS OVER 10' WEST OF THE N/S QUARTER LINE. THE DISTANCE FROM THE E 1/4 COR TO THE N/S 1/4 LINE IS IN HARMONY WITH BROWN'S DISTANCE.

D) Describe any material discrepancy between the location of the corner as restored or reestablished and the location of that corner as previously restored or reestablished by distance and direction. Show the discrepancy on the plan view drawing under (a), above. Show the distances between the corner as previously restored or reestablished and (1) the corner as restored or reestablished, and (2) to at least 4 of the witness monuments shown on the drawing in (a), above.

(E) Was the corner reestablished through lost corner proportionate methods? If so, show the method, including the directions and distances to other public land survey corners used as evidence or used for proportioning the corner location.

NO

I, Donald Barnes, hereby certify that the corner points as identified by the corner code index were, in a field survey on, April 17, 1995, established, re-established, monumented, re-monumented, recovered or restored as expressed below and in conformance with the regulations and rules as required in the current manual of survey instructions of the United States Department of Interior, Bureau of Land Management.

seal

COUNTY SURVEYOR FILING DATA

Date of computer entry \_\_\_\_\_

Date microfilmed \_\_\_\_\_

Number of included sheets \_\_\_\_\_  
CORNER CODE

*Donald Barnes*

*4/19/95*